



Burke-Gilman Trail Missing Link Project



Our mission, vision, and core values

Mission: deliver a high-quality transportation system for Seattle

Vision: connected people, places, and products

Committed to **5 core values** to create a city that is:

- Safe
- Interconnected
- Affordable
- Vibrant
- Innovative

For **all**

Agenda

| Time | Item |
|----------------|--------------------------------------|
| 2:30 – 2:45 PM | Introductions and progress update |
| 2:45 – 3:05 PM | SPU Ship Canal Water Quality Project |
| 3:05 – 4:00 PM | Final design |
| 4:00 – 4:10 PM | Construction preview |
| 4:10 – 4:20 PM | Public comment |
| 4:20 – 4:30 PM | Wrap up |
| 4:30 PM | Adjourn |



Progress updates



Appeal updates



Mayor's Office update



SPU Ship Canal Water Quality Project



Ship Canal Water Quality Project

Burke Gilman Missing Link Trail, Design Advisory Committee
9/13/2018

Keith Ward, Ship Canal Water Quality Project Executive



City of Seattle

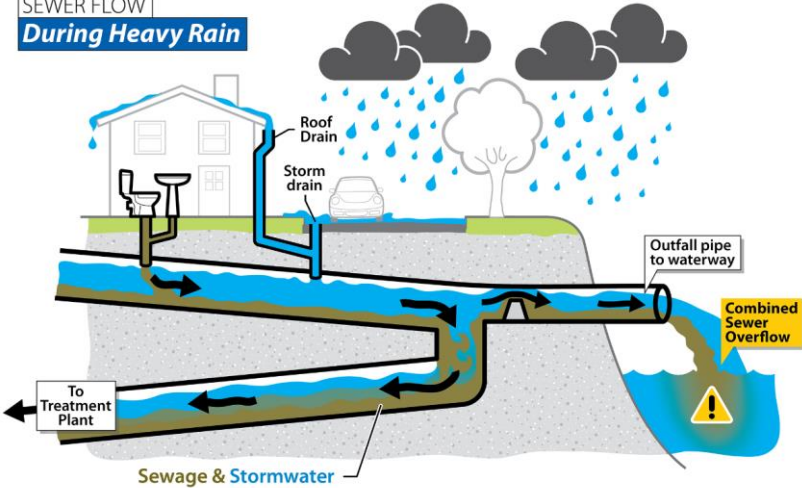
Agenda

1. Program Overview
2. Shilshole Pipe Update
3. Ballard Early Works Project
4. 11th Ave. NW work

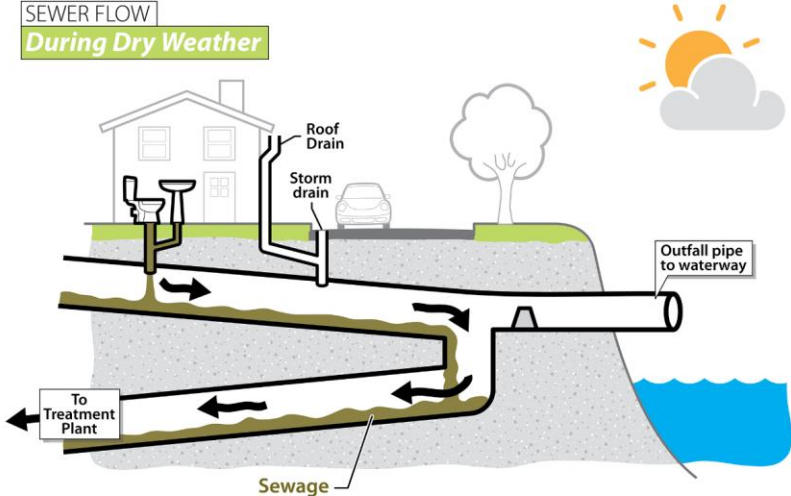


Combined Sewer Overflows

SEWER FLOW
During Heavy Rain



SEWER FLOW
During Dry Weather



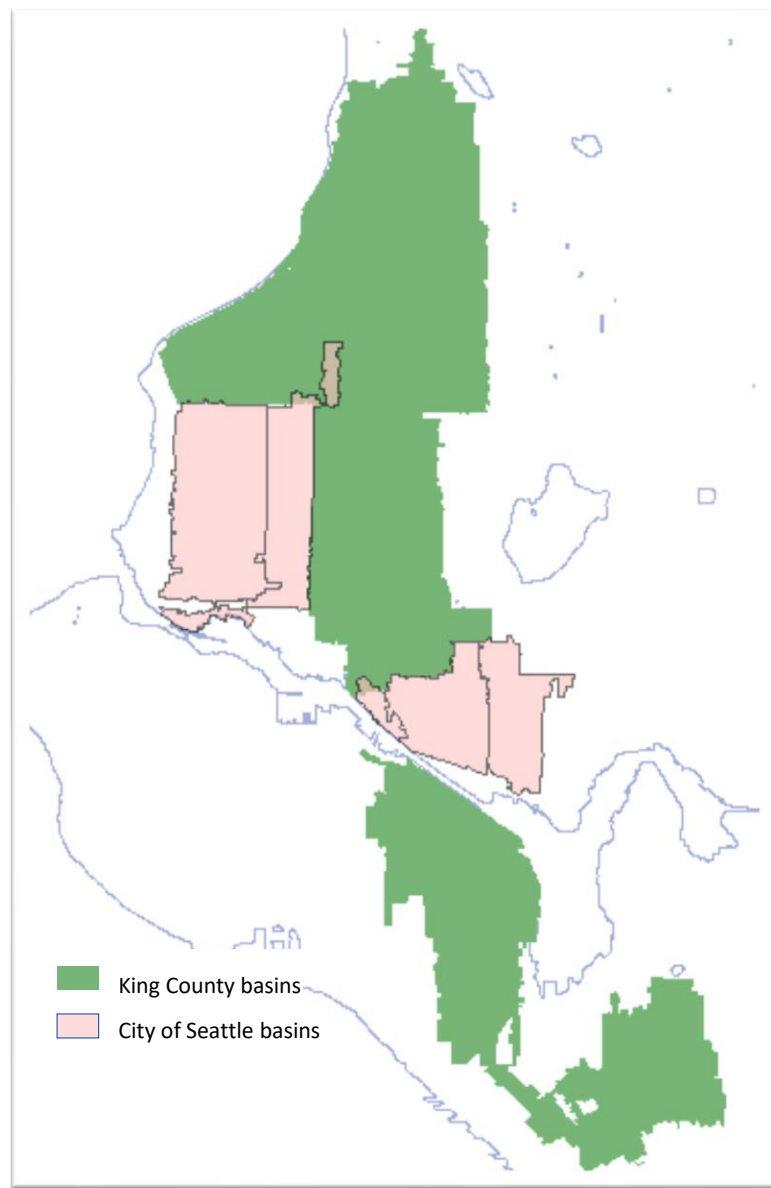
Shared Project

Best Value

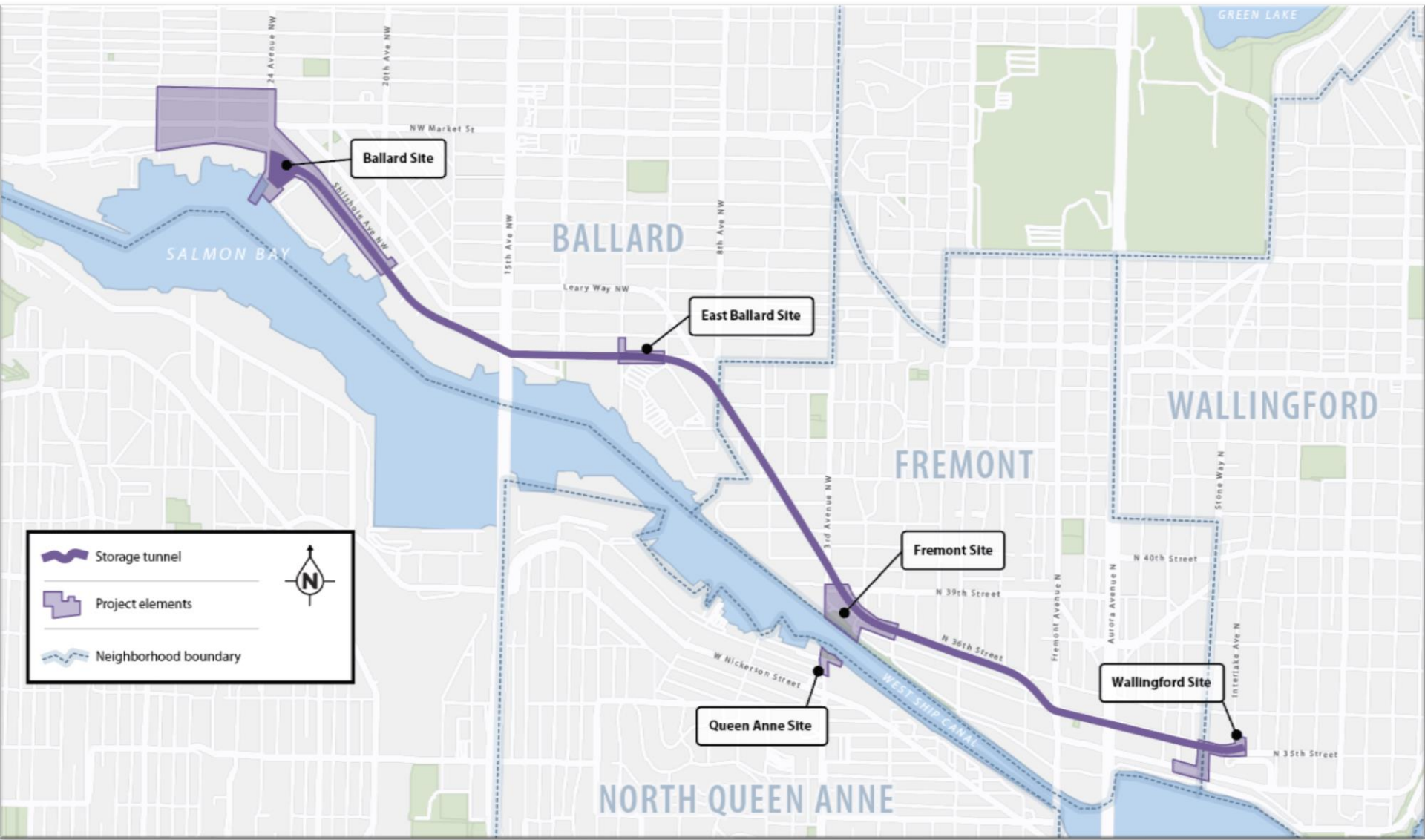
- Outfalls: 2 KC, 5 Seattle
- Four projects reduced to one
- Reduced community impacts
- Fewer property acquisitions
- Improved operational flexibility

Joint Project Agreement

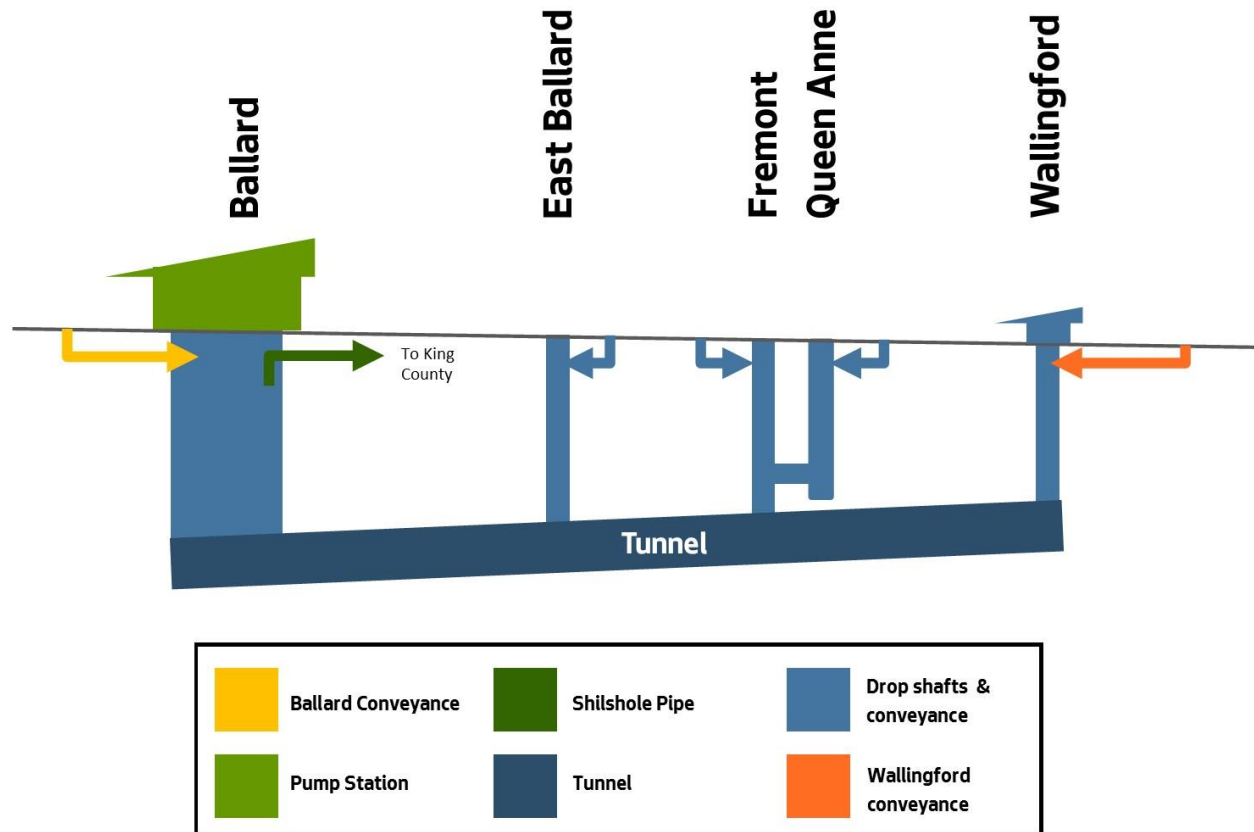
- 12/8/2015: City of Seattle – 65%
- 6/21/2016: King County – 35%



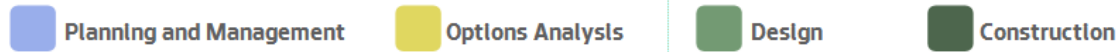
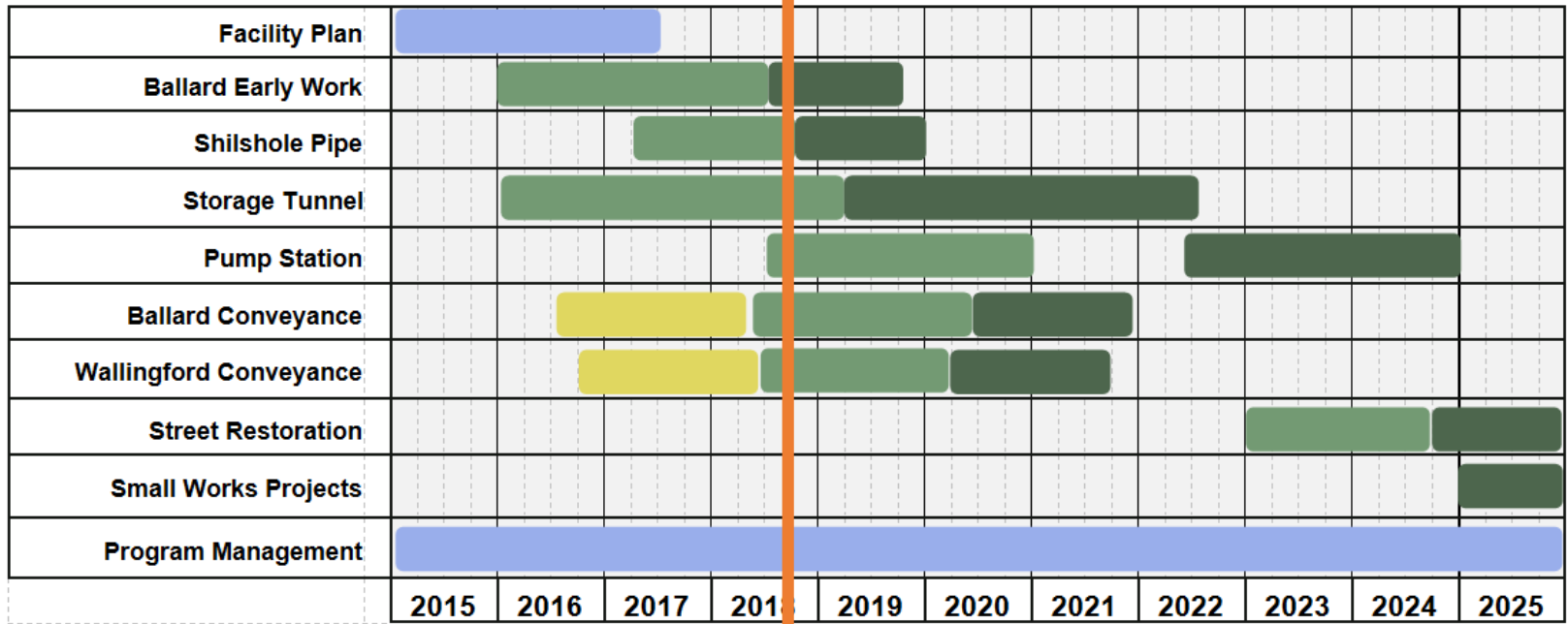




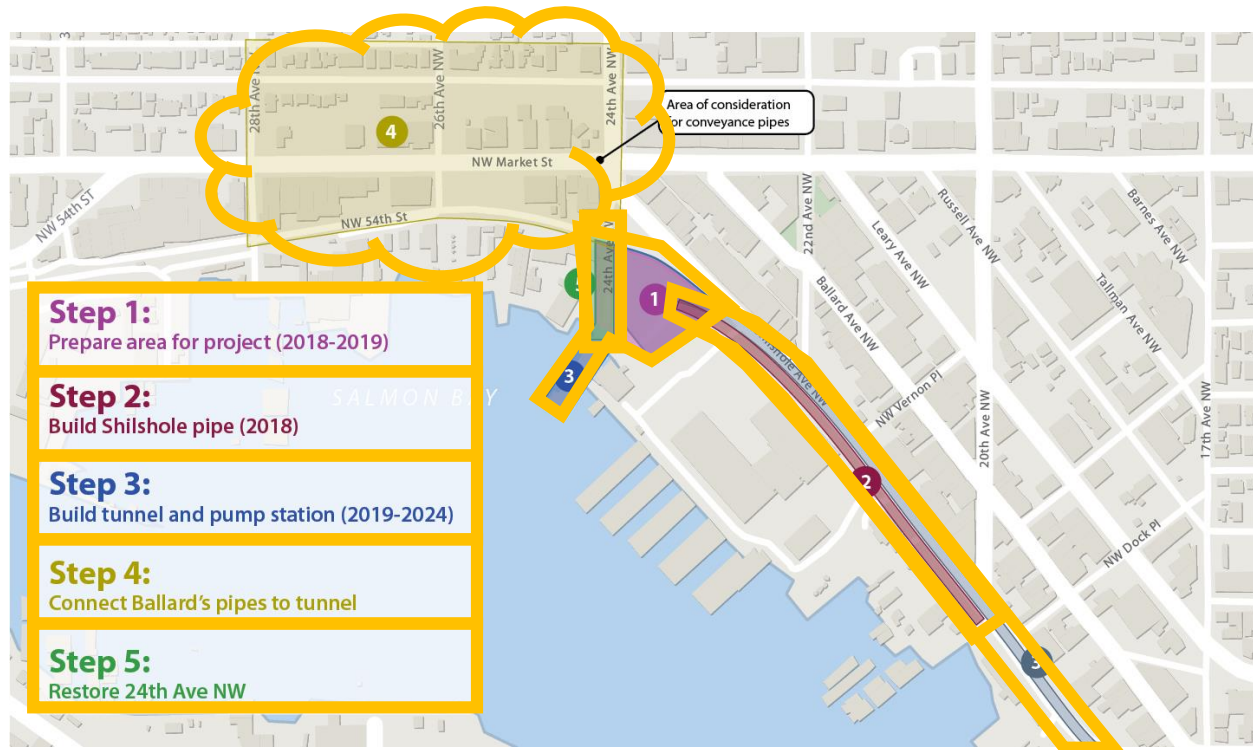
Project Components



Schedule



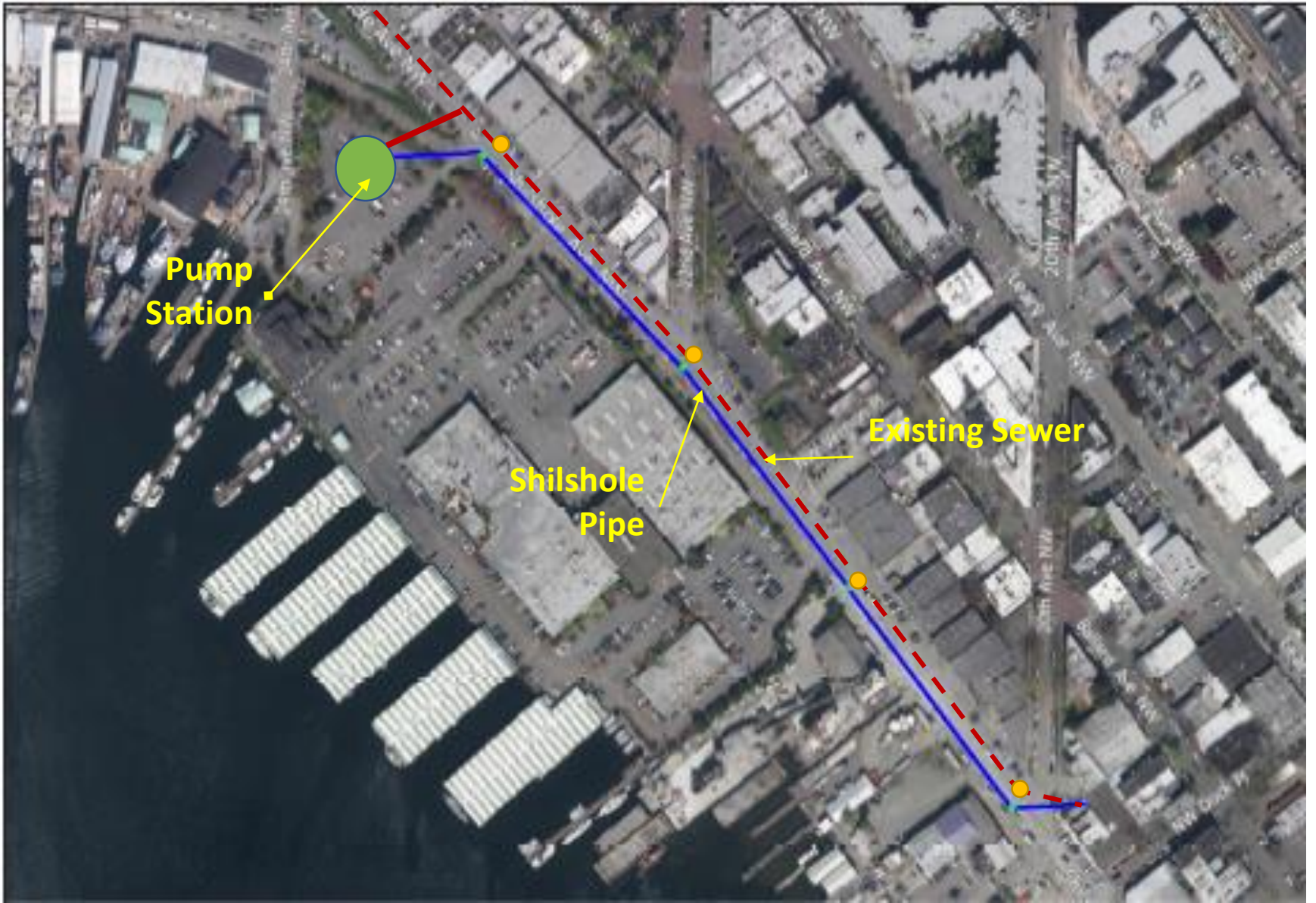
Ballard – Previous Construction Sequence



Value Engineering

- Value Management
 - Life Cycle Review
- Risk Management





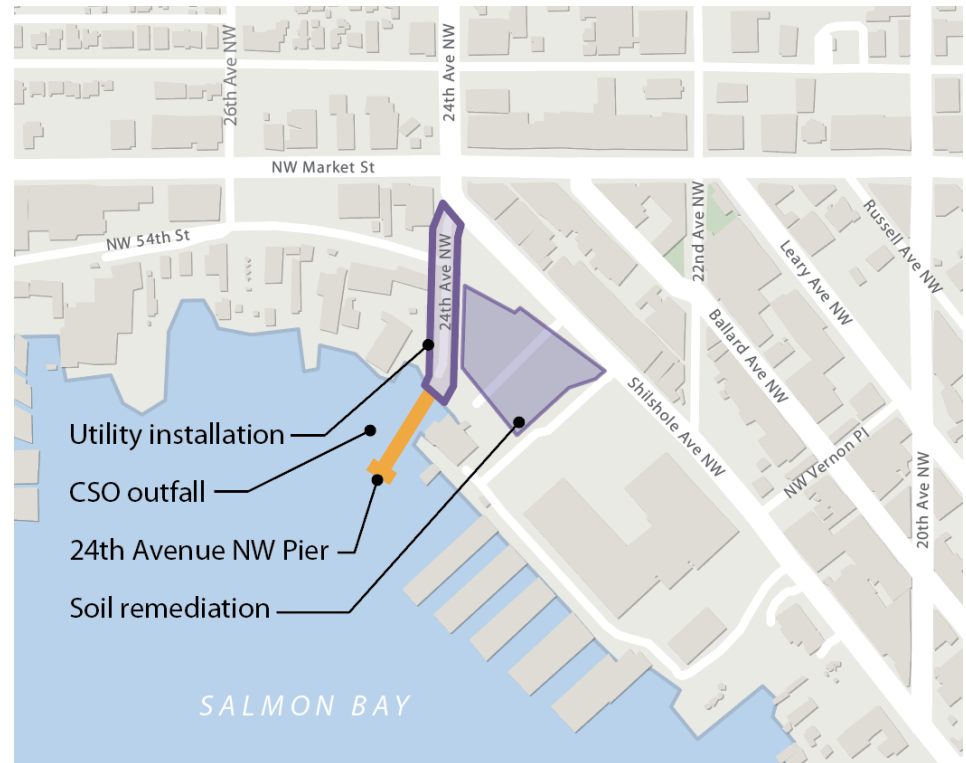
Shilshole Pipe Decision – Use existing sewer

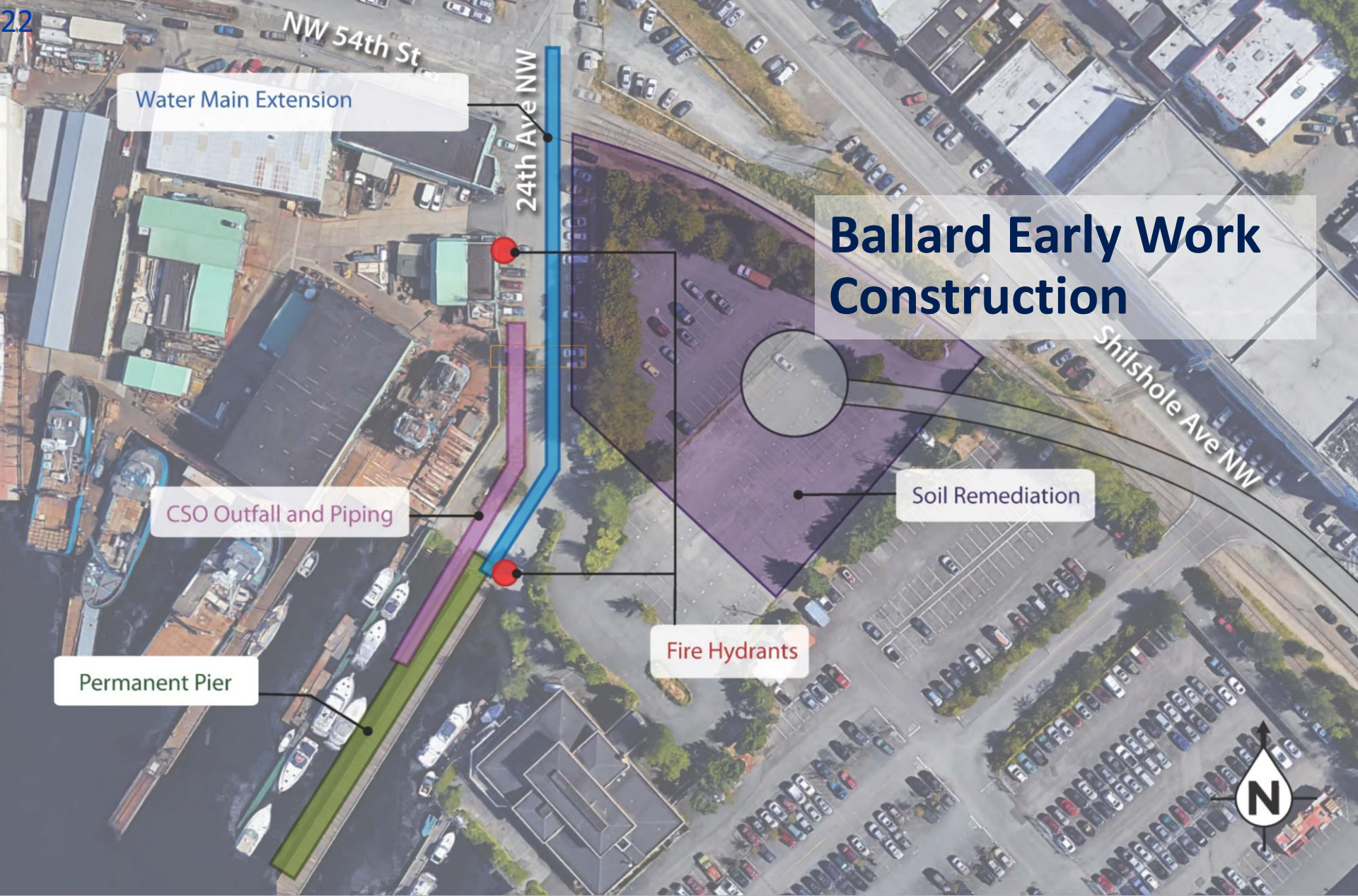
- Lower life-cycle costs
- Use a resilient system design
- Adaptively manage
- Construct in future if needed



Ballard Early Work Construction

- Build new pedestrian pier
- Remove onsite contaminated soil
- Install utilities in 24th Avenue NW
- Construct simultaneously with BGT Missing Link





Water Main Extension

CSO Outfall and Piping

Permanent Pier

Fire Hydrants

Ballard Early Work Construction

Soil Remediation

Ballard Early Work Construction

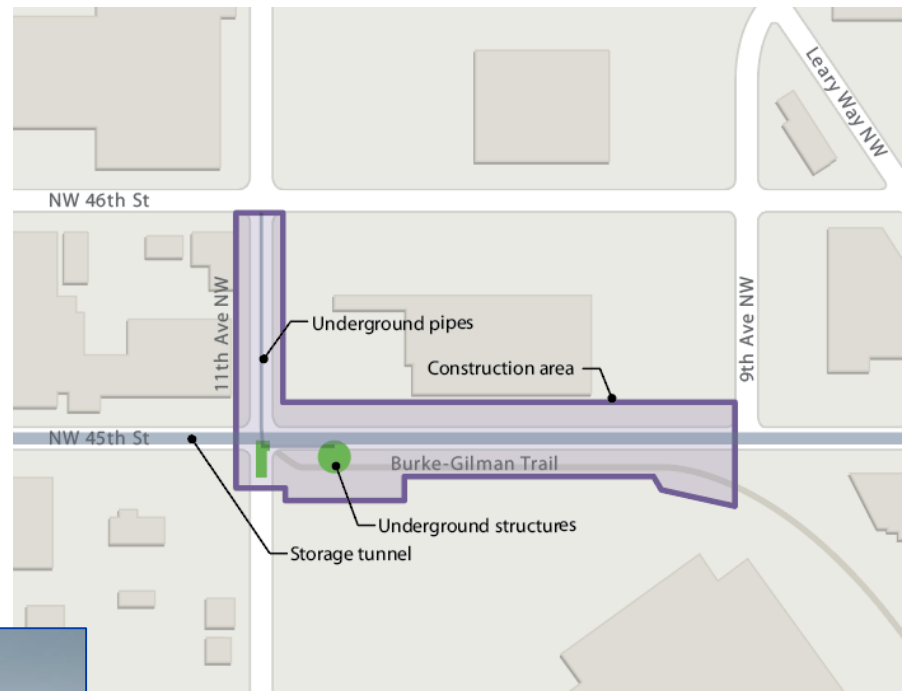
What to expect during construction:

- Truck traffic
- Construction noise
- Marine construction activities (October to March)
- Construction vehicles and equipment in the area
- 24th Avenue NW
 - Pedestrian Pier closure through 2025
 - Temporary lane closures
 - Parking and access restrictions

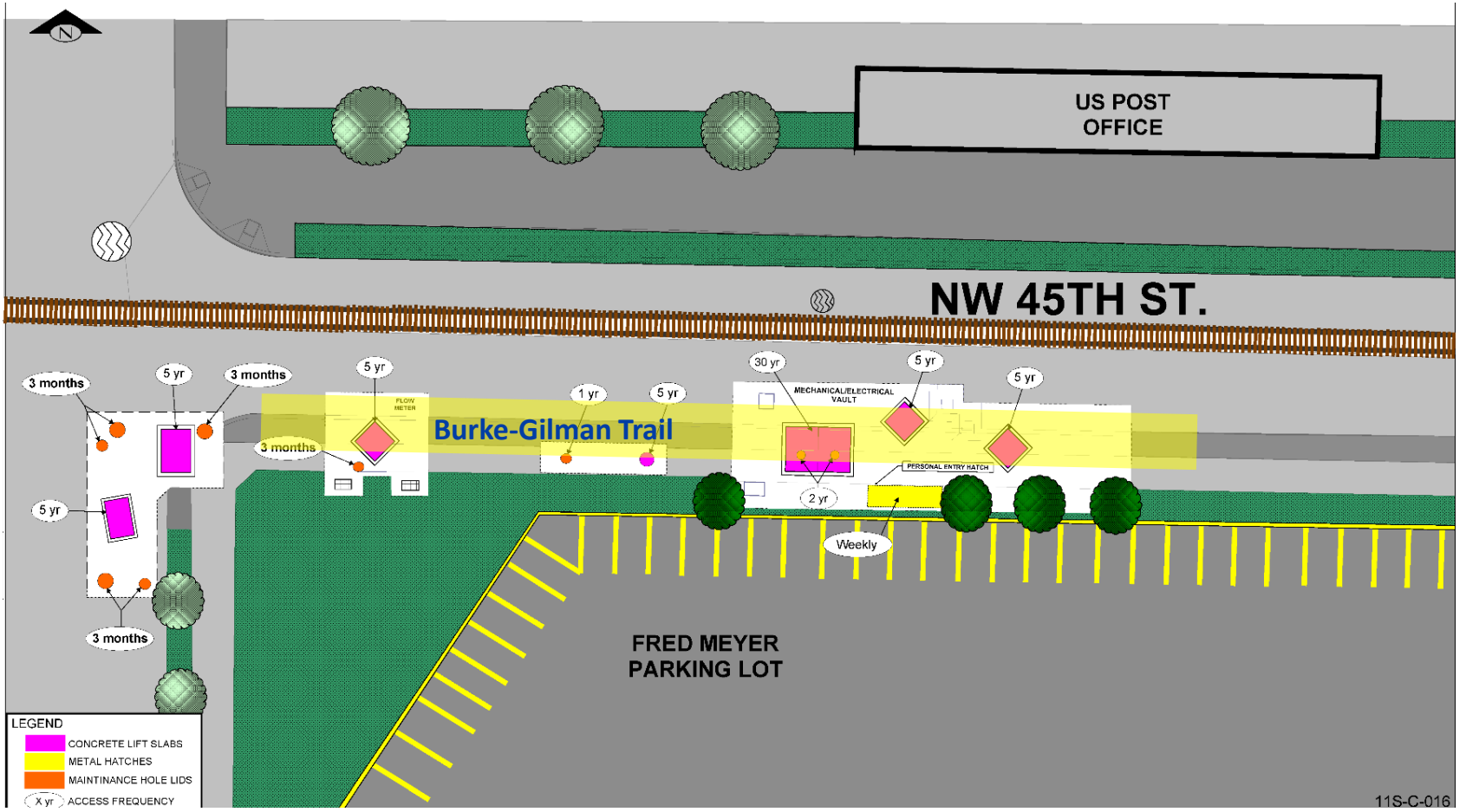


East Ballard

- Construction in 11th right-of-way
- Limited access to street end during construction
- Burke-Gilman Trail construction detour
- Infrastructure in bike lane



East Ballard - Facility Layout



11S-C-016

Burke-Gilman Trail: Proposed Detour

- Approx. 9 months of construction (2021)





Ship Canal Water Quality Project

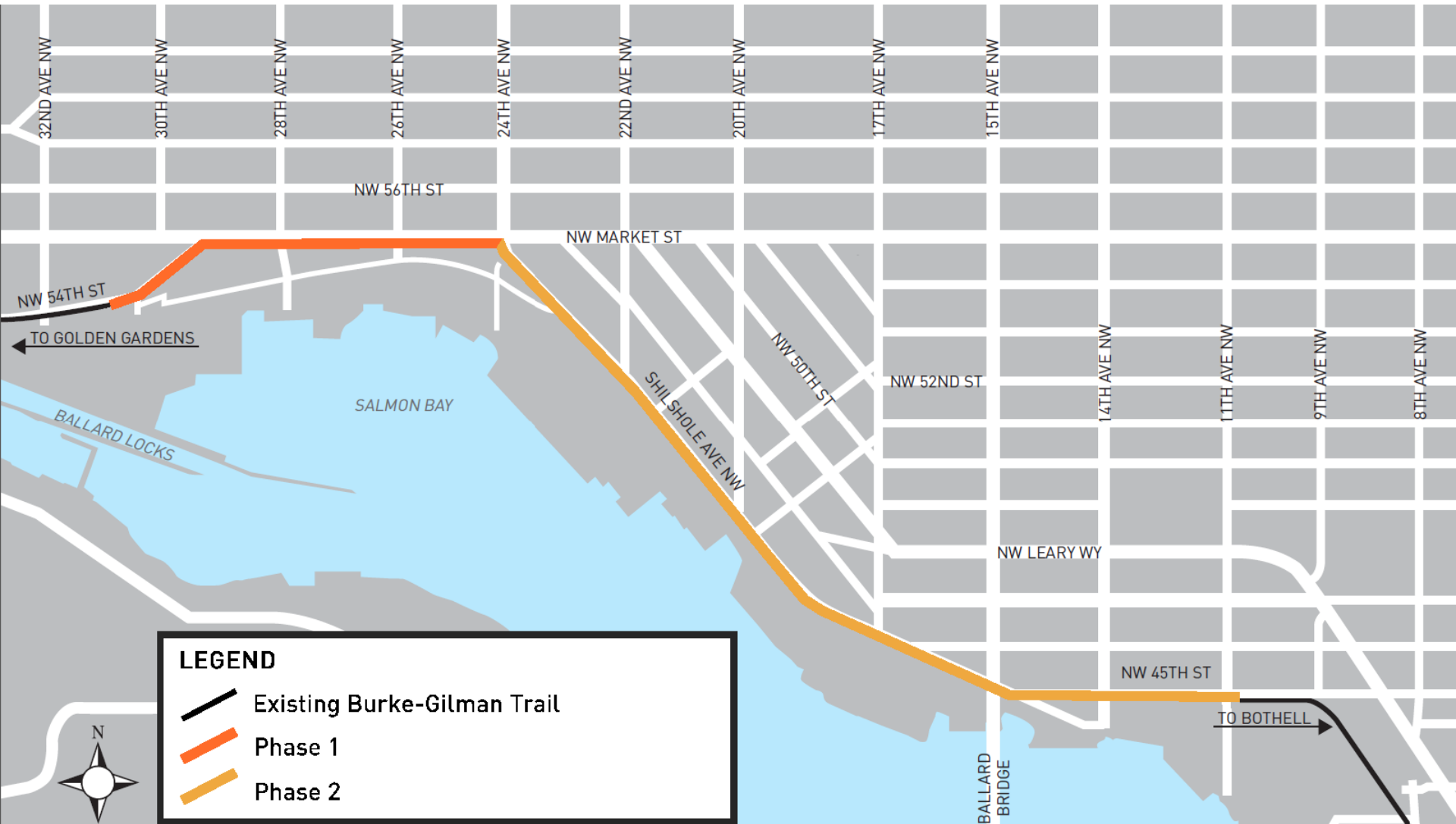
Questions?



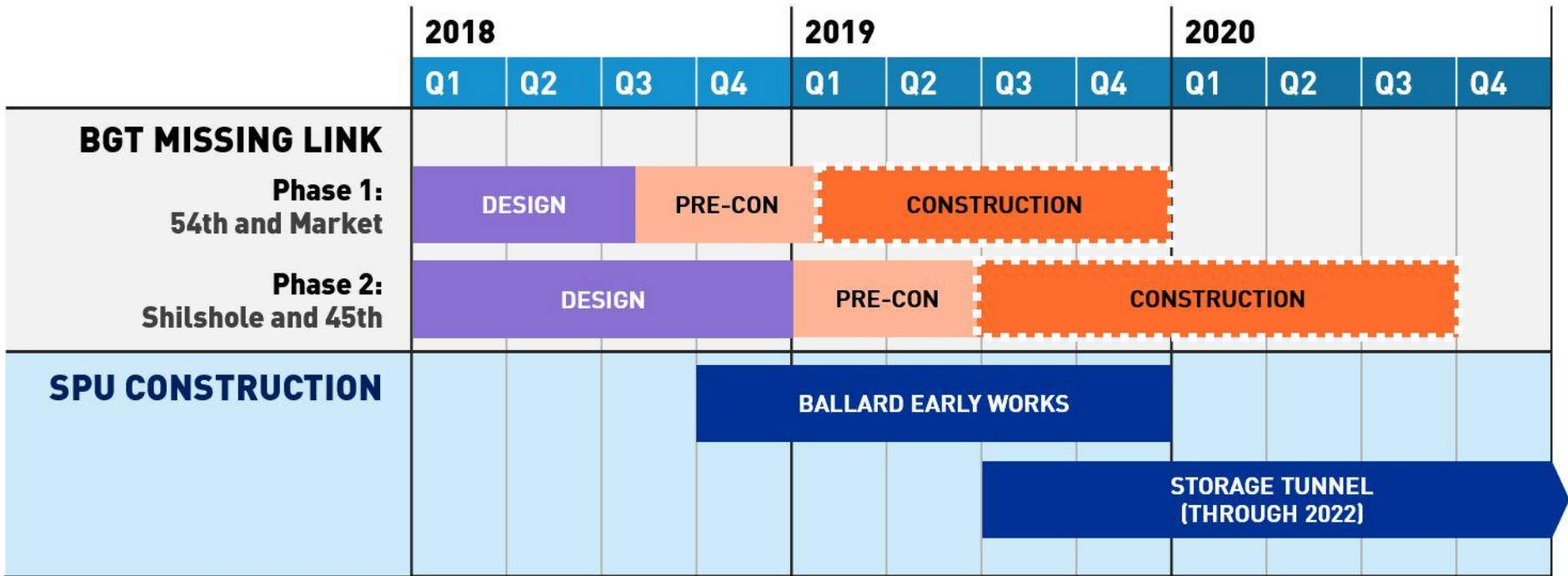
Schedule and design updates



Construction phasing



Project schedule



Phase 1 corridor
improvements
completed in
Q4 2019



All corridor
improvements
completed in
Q3 2020



Design updates since 2/1

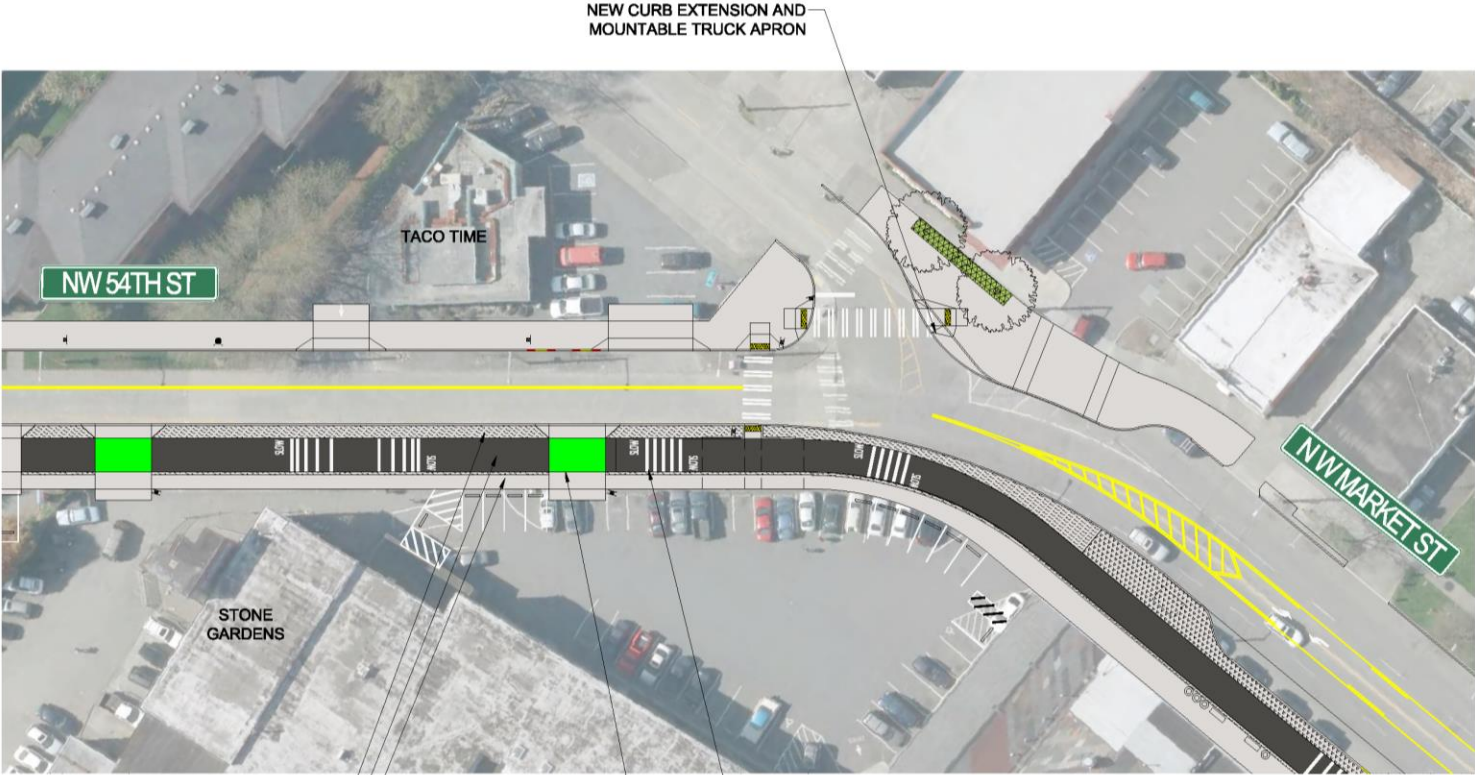
- Gap in striping at the Locks to allow left turns
- Revised loading around Lockspot Café
- Revised delineator strip along trail
- Revised curb bulb at 54th/Market to better accommodate Metro turns
- Revised Metro overhead contact system poles
- Addition of railroad siding near Shilshole/46th and associated revised trail crossing
- Removed SPU Shilshole Pipe from project



Graphic plans



Graphic plans



NEW CURB EXTENSION AND MOUNTABLE TRUCK APRON

TACO TIME

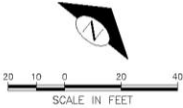
NW 54TH ST

STONE GARDENS

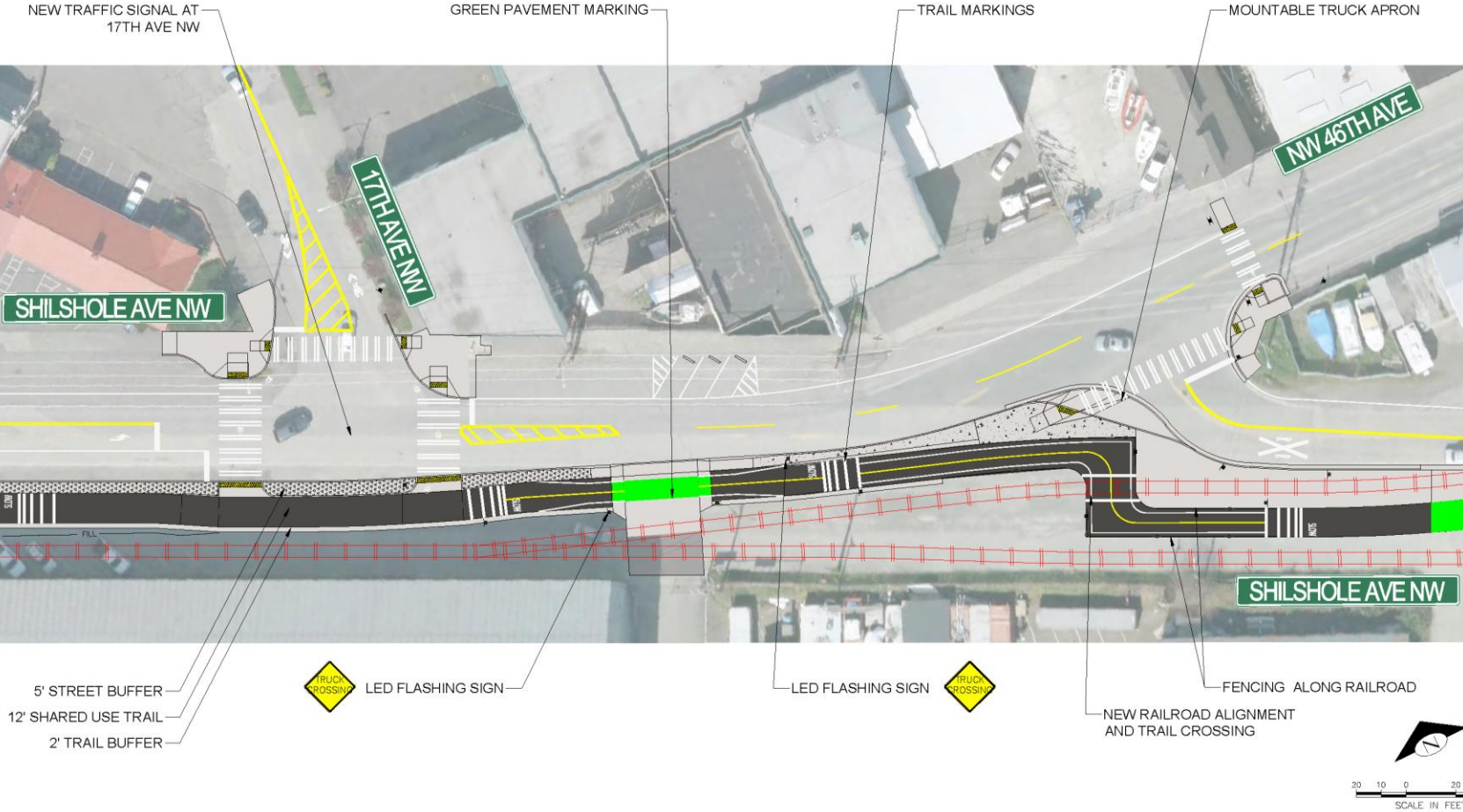
NW MARKET ST

5' STREET BUFFER
12' SHARED USE TRAIL
6' SIDEWALK

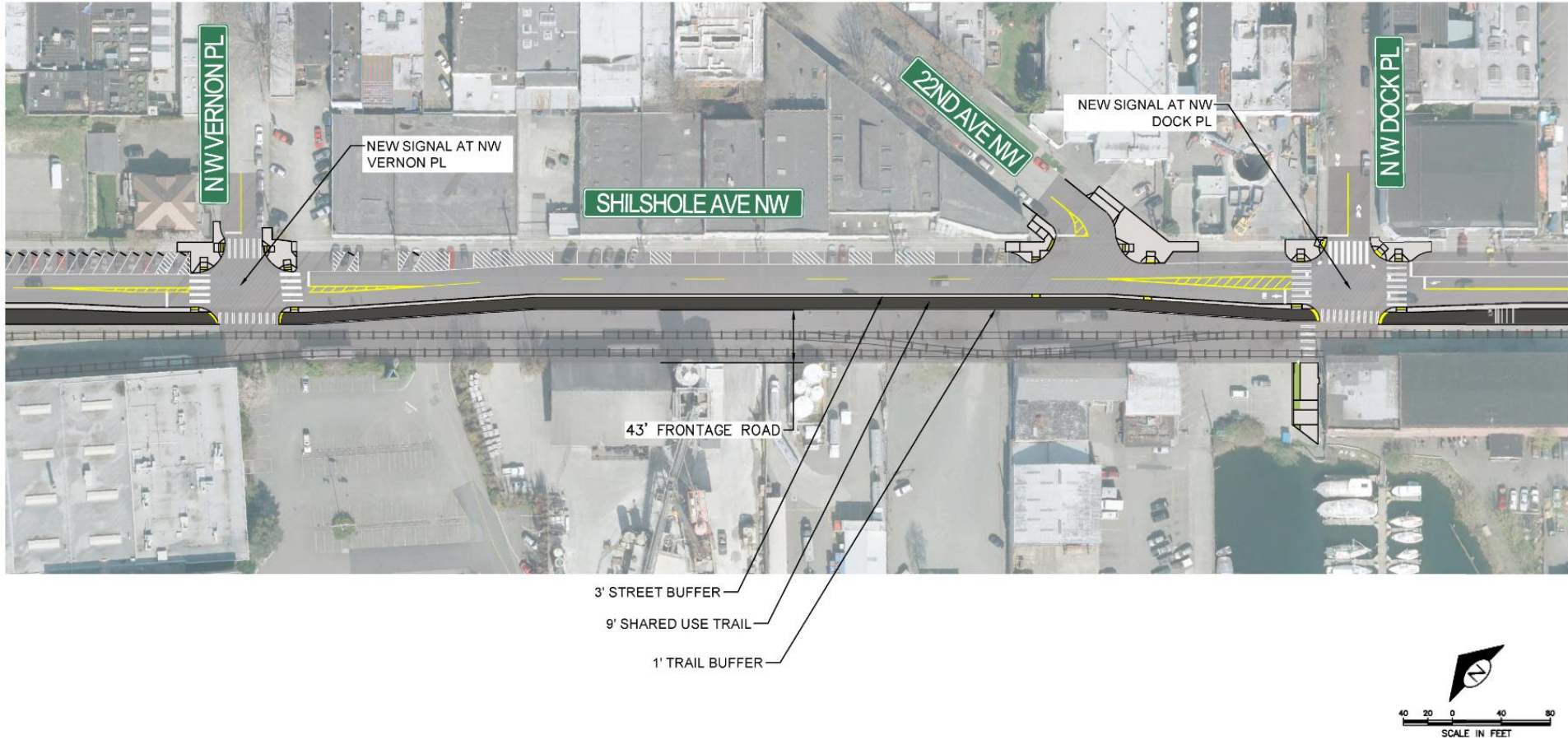
TRAIL MARKINGS
GREEN PAVEMENT MARKING



Graphic plans



Mayor's Office option



Corridor parking update

- Phase 1: **95%** parking maintained
- Phase 2: **54%** parking maintained
- Full Project: **60%** parking maintained
- 236 stalls removed (down from 344 in FEIS)
- Existing parking count includes estimate of double and triple parked cars on Shilshole – majority of loss occurs in these areas



Ballard parking update

- Off-street parking:
 - Over 1,000 public off-street parking spaces around downtown Ballard
 - These lots generally have spaces available in the evenings and weekends when on-street parking may be more full
 - SDOT worked with the Ballard Alliance earlier this year to update the location and ‘arrow direction’ of signs that guide motorists to off-street parking
- On-street parking:
 - Annual on-street parking study complete
 - Informs changes to rates, time limits, and paid parking hours
 - Final review of the data is ongoing, report issued in early October, implementation later this year



Public art update



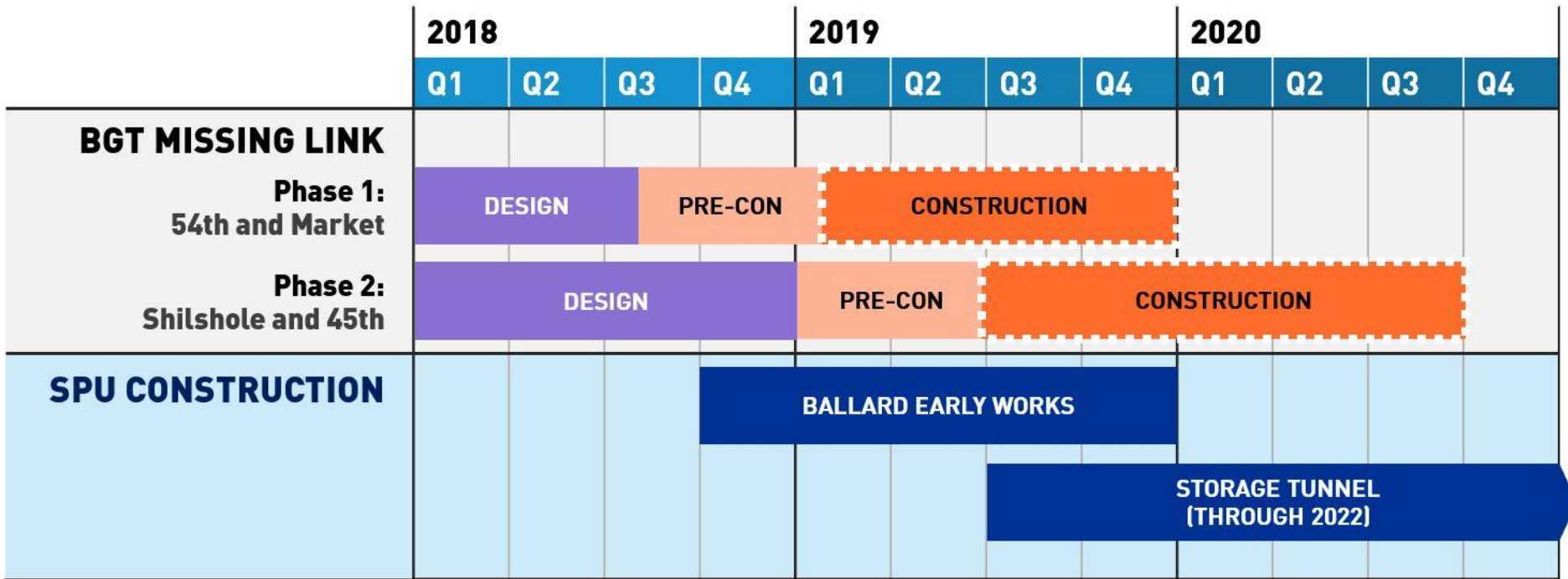
DAC questions and final comments on corridor design



Construction preview



Project schedule

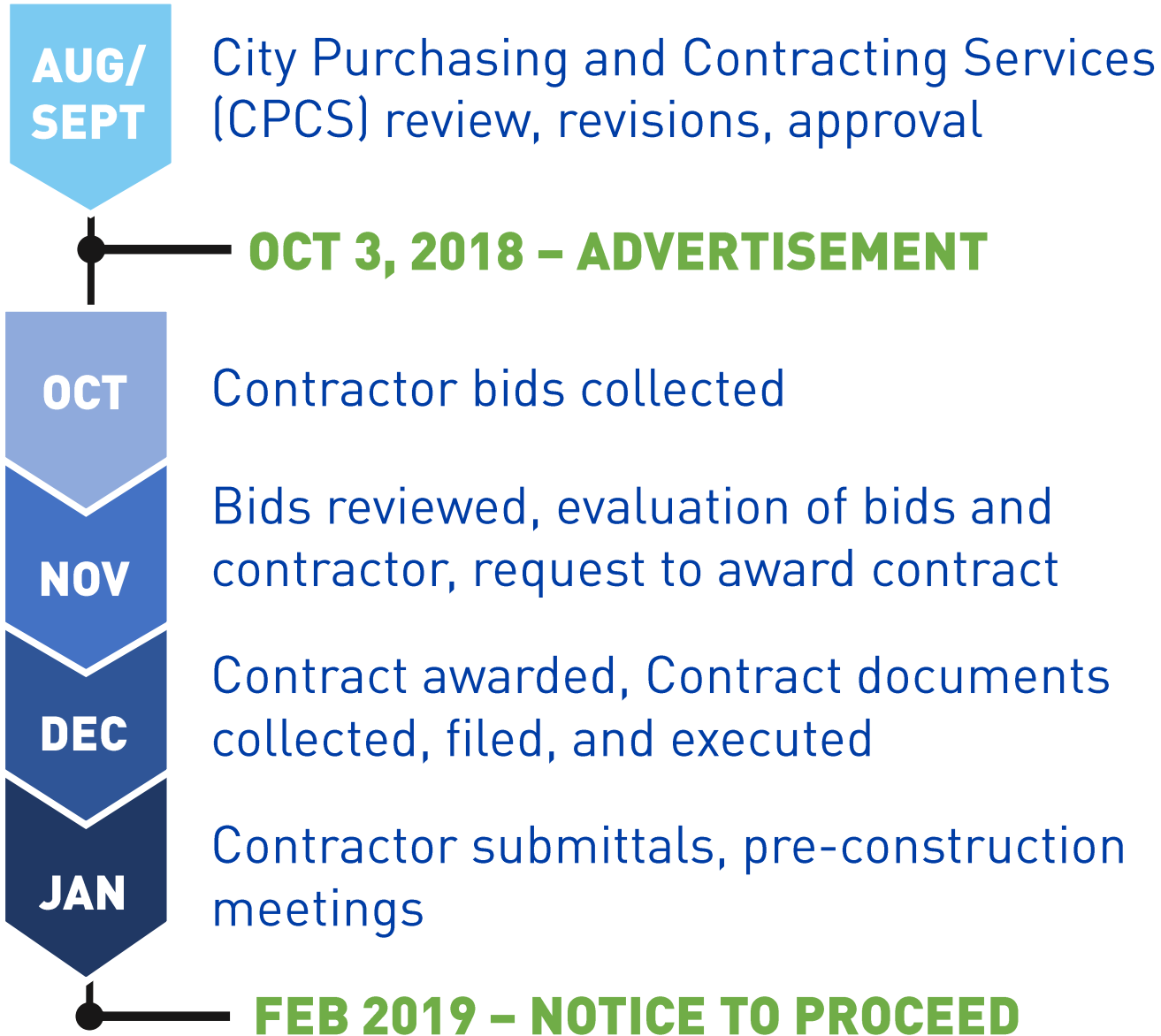


Phase 1 corridor improvements completed in Q4 2019

All corridor improvements completed in Q3 2020



Securing a contractor for Phase 1 construction



SDOT Construction Outreach Best Practices

- Public pre-construction meeting
- Site-visits with adjacent and affected property owners
- Weekly construction meetings with contractor and the outreach team
- Construction notifications
 - Regular webpage and social media updates
 - Flyers delivered to properties near work zones
- On-site signage to show closures/detours/etc. and that “Businesses are Open”
- Active phone line



Public Education & Post-Construction Monitoring Opportunities

Pre-opening

- Safety-oriented events, web updates, and social media posts
- Video and other multimedia strategies highlighting corridor “rules” and right of way
- Trail/yard sign campaign
- Educational briefings with partners (cycling, pedestrian, truck/freight, adjacent businesses)
- Media coordination



Public Education & Post-Construction Monitoring Opportunities

Post-opening

- Ongoing education campaigns
- Post-completion conversations with business owners, property owners, and residents
- Monitoring of design/incidents through field observations
- Design and implementation of corridor changes, as needed



Public comment



**Wrap up/
next steps**



Between June 2017 – September 2018, DAC members...

Participated in:

- 10 meetings
- 1 DAC corridor walking tour
 - 1 field test
 - 1 driveway workshop
- 3 public meetings and walking tours

Helped design a comprehensive, multimodal corridor that enhances the experience for all users by providing feedback on:

- Business access
- Mixing zones
- Trees
- Parking
- Community/User/Business priorities and concerns

Worked to enhance safety and predictability for users by providing feedback on:

- Areas of potential high conflict
- Turning radii
- User patterns
- Adjacent property owner uses
- Innovative warning technology
- Trail marking, signage



Questions?

louisa.galassini@seattle.gov | (206) 615-0185

www.seattle.gov/transportation/BGT_MissingLink.htm

www.seattle.gov/transportation

