



Freight Master Plan Advisory Committee Agenda

July 9, 2015

7:30 a.m. – 9:30 a.m.

Location: Seattle Municipal Tower, 700 Fifth Avenue, Seattle
40th Floor, Conference Room 4096

Project Team: Kevin O’Neill (SDOT), Sara Zora (SDOT), Ian Macek (SDOT), Gabriela Vega (SDOT), Chris Eaves (SDOT), Ron Borowski (SDOT), Craig Moore (SDOT), Chad Lynch (SDOT), Bridget Wieghart (PB).

- | | |
|---|-------------------------|
| 1. Welcome and Introductions (5 minutes) | 7:30 – 7:35 a.m. |
| 2. Development of Draft Freight Network (30 minutes)
SDOT <ul style="list-style-type: none">• Freight Network Designation for Seattle | 7:35 – 8:05 a.m. |
| 3. Draft Freight Network – Discussion (60 minutes)
SDOT and CAC | 8:05 – 9:05 a.m. |
| 4. Next Steps (25 minutes)
SDOT | 9:05 – 9:30 a.m. |



Freight Master Plan

Advisory Committee Meeting
July 9, 2015

SDOT's mission, vision, and core values

Mission: deliver a high-quality transportation system for Seattle

Vision: connected people, places, and products

Committed to **5 core values** to create a city that is:

- Safe
- Interconnected
- Affordable
- Vibrant
- Innovative



Policy Framework Freight Master Plan (FMP)

FMP Draft Vision Statement:

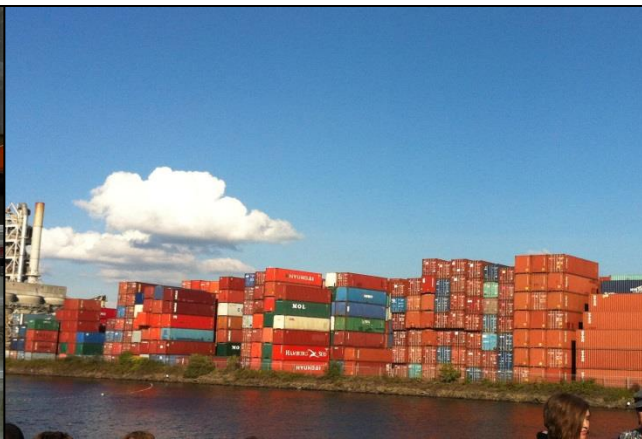
A vibrant city and thriving economy connecting people and products within Seattle and to regional and international markets.



Draft FMP Goals

Project goals should articulate desired outcomes of the FMP

- **Safety** - Improve safety and the predictable movement of goods and people
- **Mobility** - Reliably connect manufacturing/industrial centers and business districts with the local, state, and international freight networks



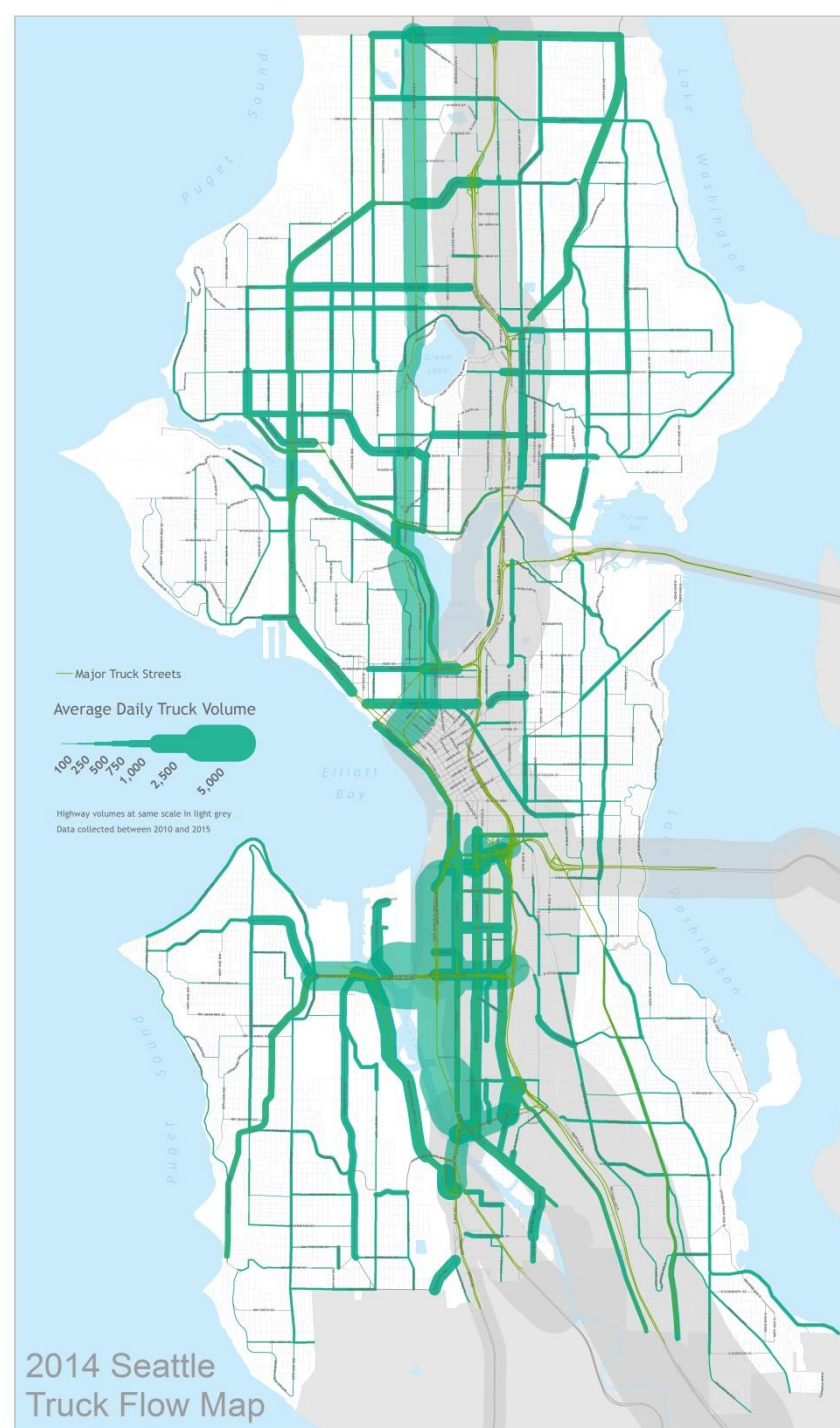
FMP Goals (continued)

- **Preservation** - Improve the state of good repair of the freight transportation network
- **Environment** - Improve the environment through a resilient freight system
- **Equity** – Benefit residents and businesses of Seattle through equity in investments and public engagement relating to freight mobility



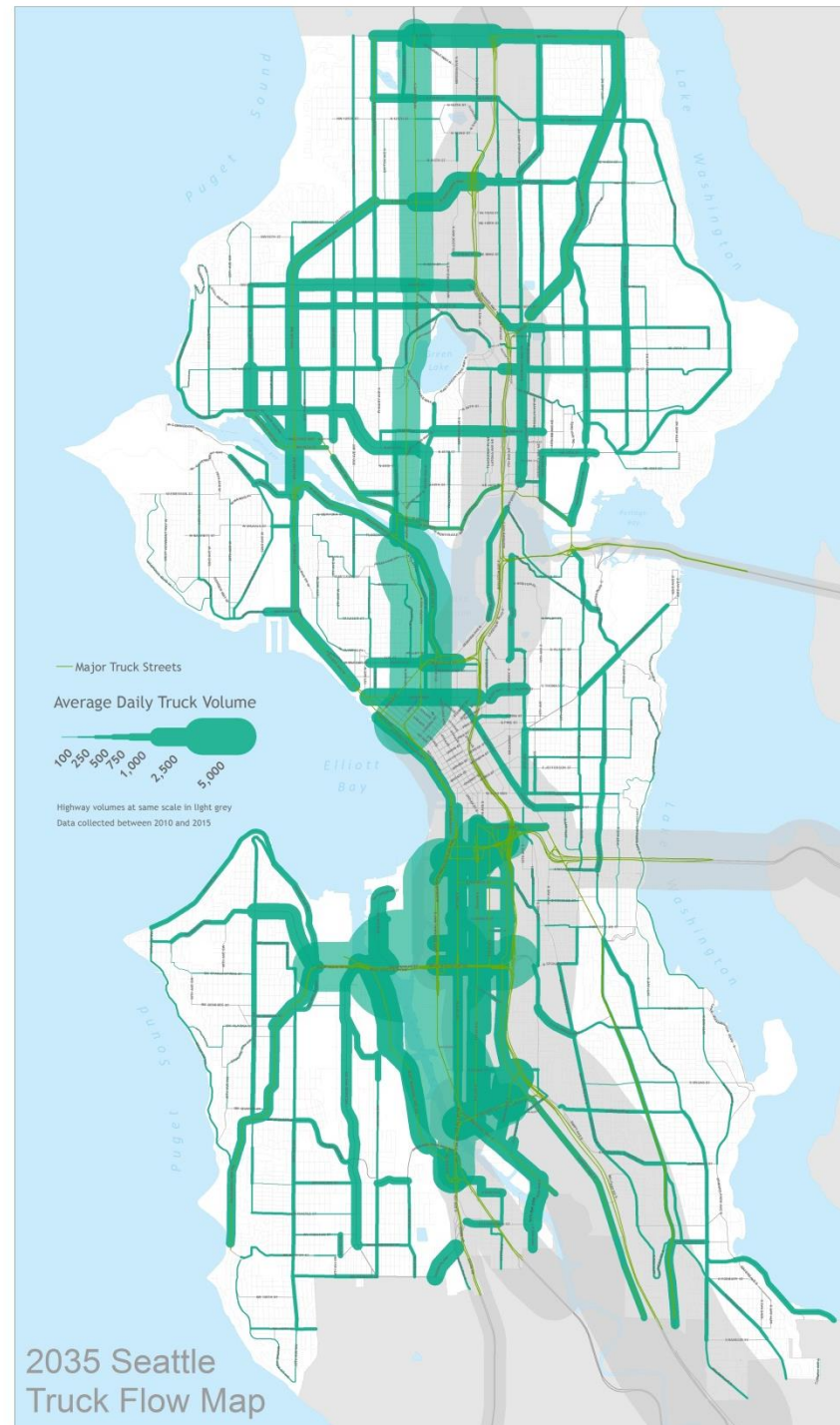
Existing conditions

- 2014 First truck flow map
- City of Seattle: 780 count locations
- Other input from WSDOT, KC Metro



Future conditions

- 2035 Truck flow map
- Create districts for analysis
- Employment industries: Retail, Wholesale and Manufacturing
- Develop Growth factors and apply to districts
- Calibrate future volumes against other projects



Seattle's Truck Street Designation

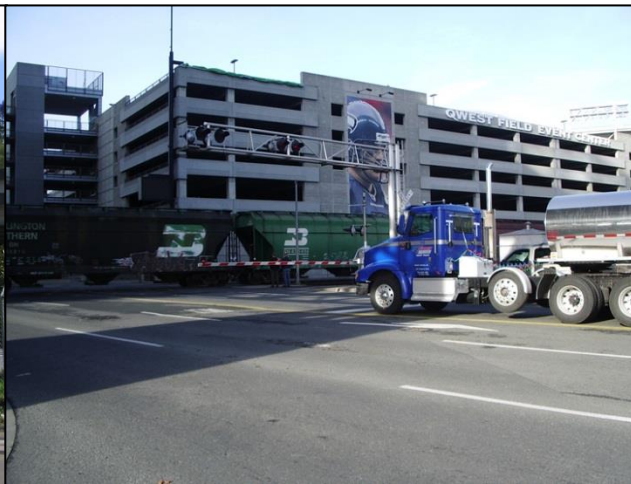
- Freight goes everywhere
- Need to recognize different levels of freight movement and needs
- Need for context sensitivity



Seattle's Truck Street Designation

Tiered system
criteria

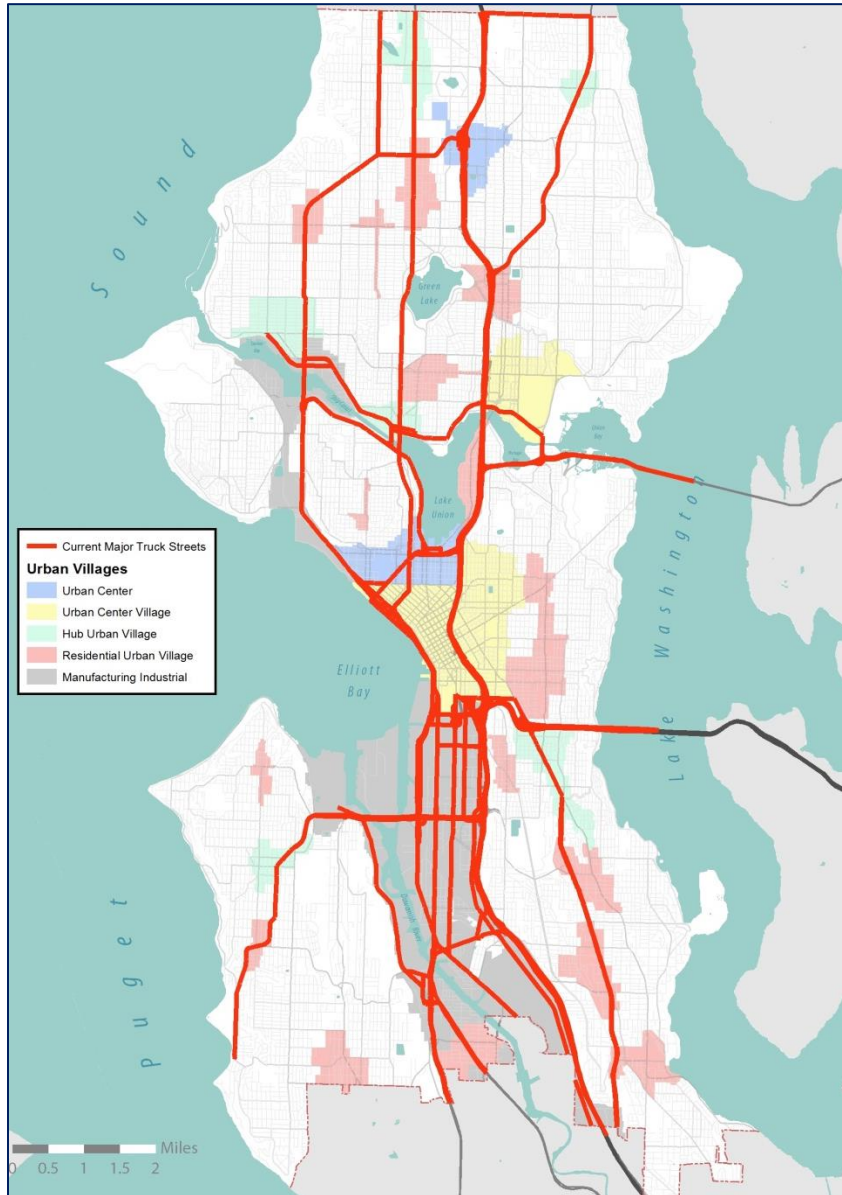
- Land use
- Functional Classification
- Truck Volume
- Physical Roadway Characteristics
- Connectivity



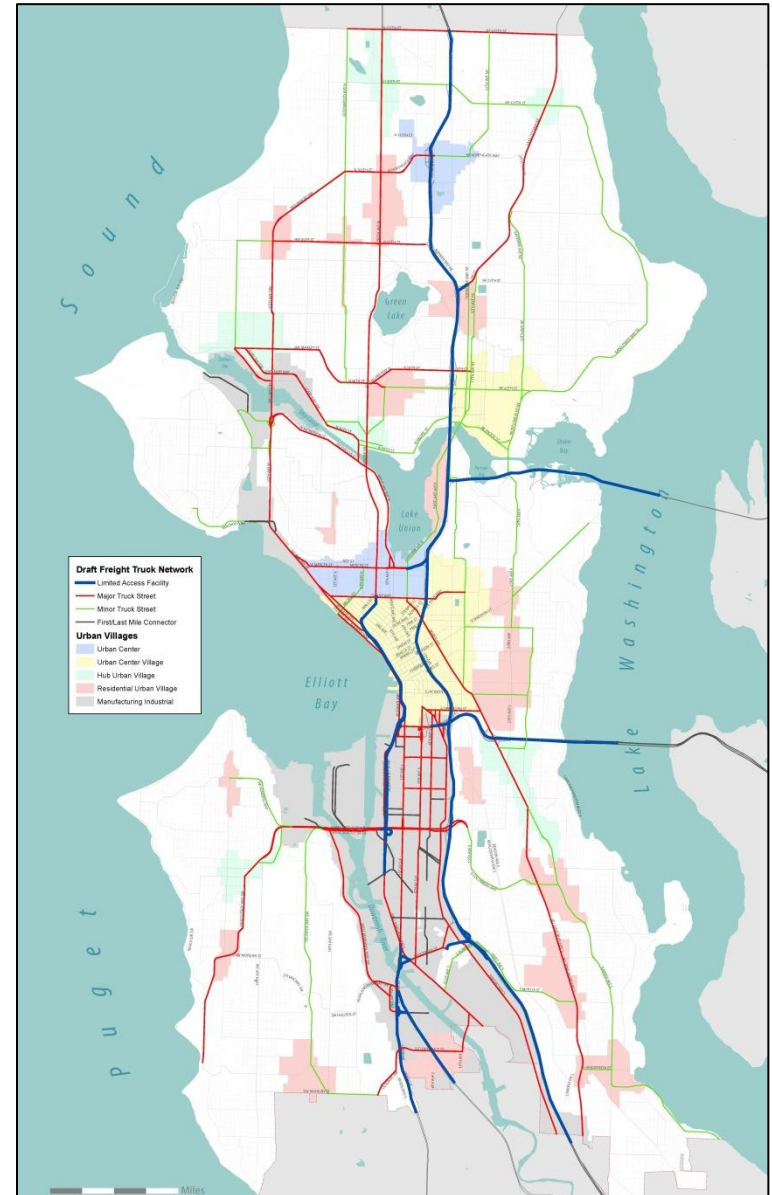
Seattle's Draft Truck Street Designation

Criteria	Limited Access Facility	Major Truck Street (Red)	Minor Truck Street (Green)	First/Last Mile Connectors
Supports Freight Generating Land Uses	Provides main connections between the city and the rest of the region, and major connections to principal metropolitan areas and industrial centers.	Provides main connections between highest freight generating land uses, including MICs, Urban Centers and intermodal terminals.	Provides secondary connections between highest freight generating land uses, including MICs, Urban Centers and intermodal terminals. Provides access to destinations along corridors.	Provides access from State system to and within the MICs and intermodal terminals. Corridors focus on access to industrial uses.
Functional Classification	Highway especially designed or designated for through traffic	Minor Arterial or higher. Generally a Principal Arterial or limited Access Facility	Minor Arterial or higher. Provides resiliency to major truck streets network	Generally, minor Arterial or lower, including non arterial streets within the industrial areas.
Truck Volume	All Volumes	500+ trucks per day	500+ trucks per day	250+ trucks per day
System Redundancy/ Performance Risk	Very little system redundancy on large size facilities	Network should provide alternative routes for trucks between the regional system (from Interstate to highest freight generating uses) and truck mobility within the city.		N/A

Seattle's Current Major Truck Streets



Seattle's DRAFT Truck Freight Network



Questions?

gabriela.vega@seattle.gov | (206) 733-9029

ian.macek@seattle.gov | (206) 684-7576

wieghart@pbworld.com | (503) 478-2812

<http://www.seattle.gov/transportation/freight.htm>

<http://www.seattle.gov/transportation>

