



Freight Master Plan

Advisory Committee Meeting
October 20, 2014

SDOT's mission & vision

Mission: delivering a first-rate transportation system for Seattle.



Vision: a vibrant Seattle with connected people, places, and products.

SDOT's core principles



Presentation overview

- Purpose
- Structure
- Scope
- Advisory Committee interaction
- Key findings to date
- Schedule



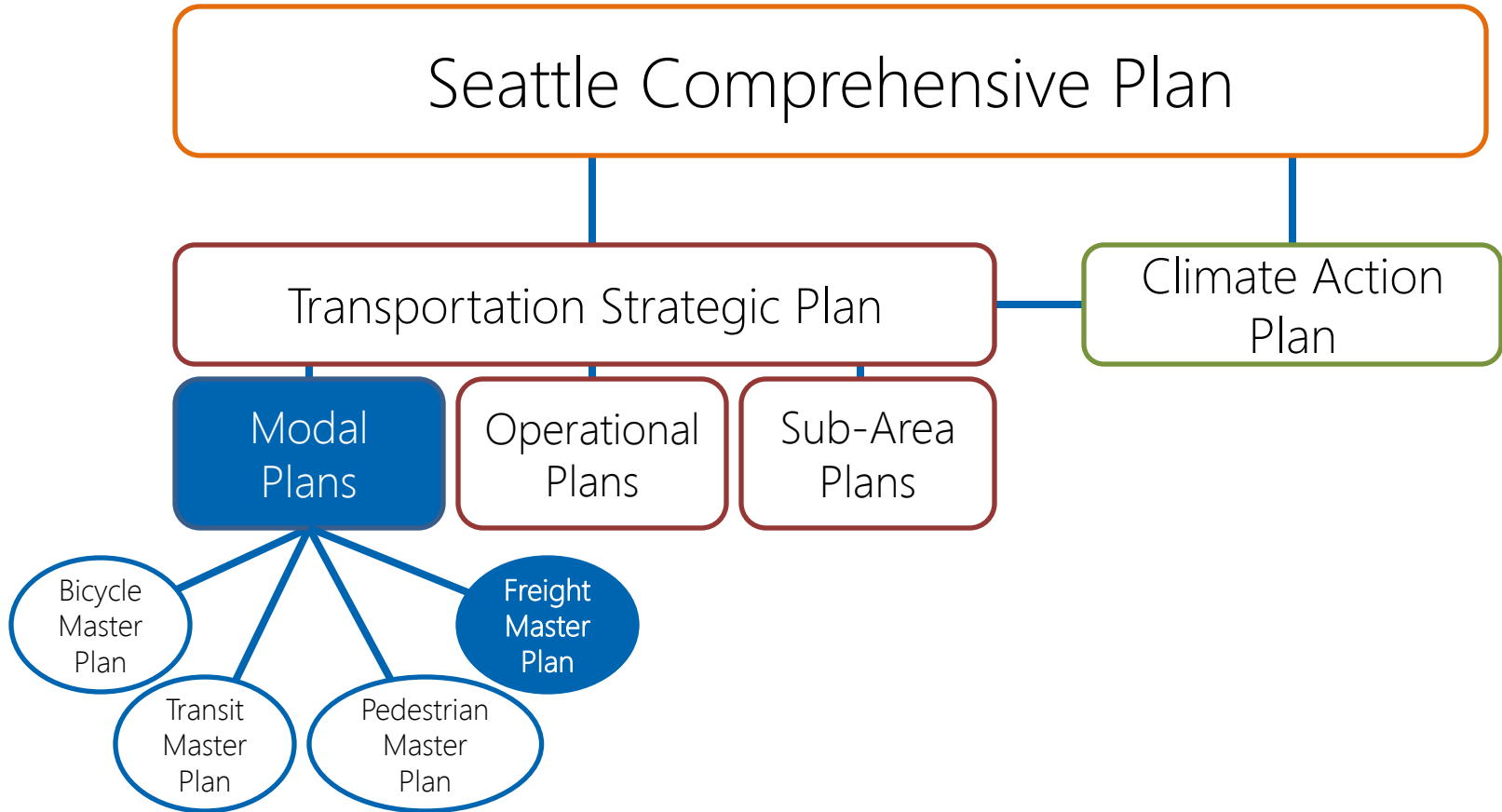
Plan purpose

Improve goods movement while sustaining Seattle's quality of life and maintaining economic competitiveness:

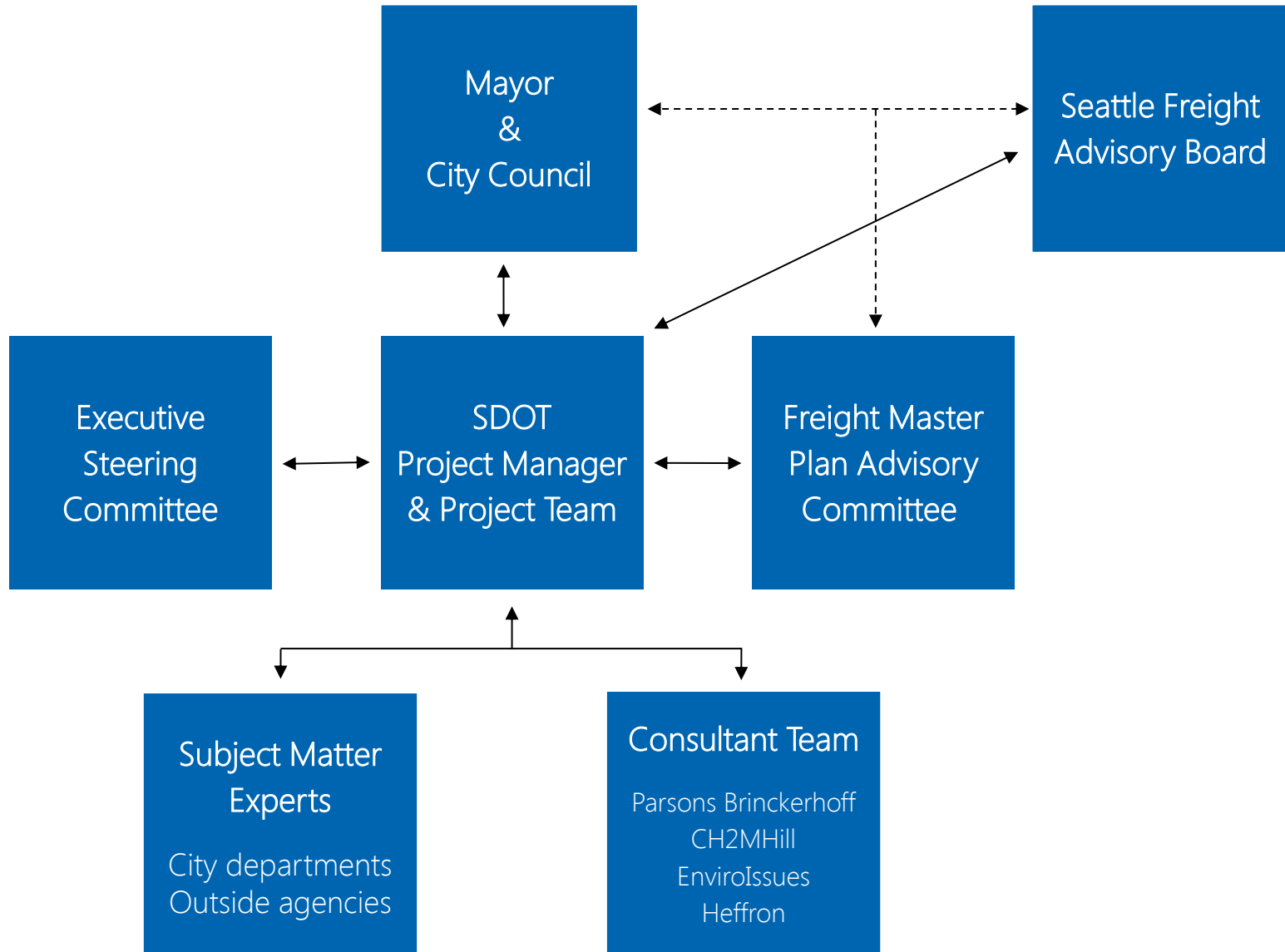
- Safety
- Resiliency
- Efficiency/Reliability
- Environmental impacts
- Economic vibrancy



Transportation planning framework



Project Structure



Project Structure

Freight Master Plan Advisory Committee

- Advise the SDOT project team during the development of the FMP



Project Scope

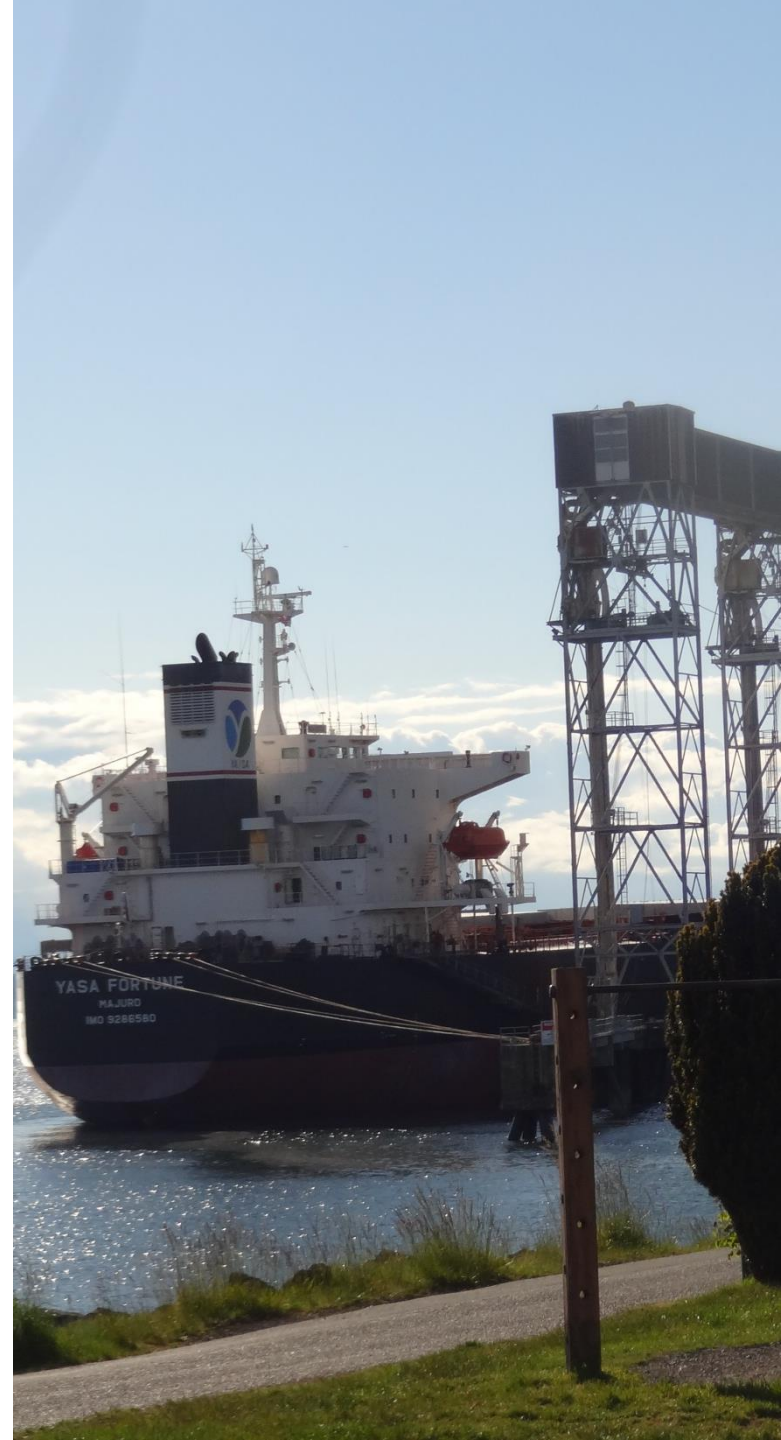
- Public outreach and stakeholder engagement
- Existing conditions report
- Policy framework
- Evaluation of future conditions
- Updated freight network (map)
- Freight improvements and design guidelines
- Implementation strategy
- Final plan



Project Scope

Public outreach and stakeholder engagement

- Online survey
- Individual and group interviews
- Community meetings and industry briefings
- Infographics



Project Scope

Existing conditions report

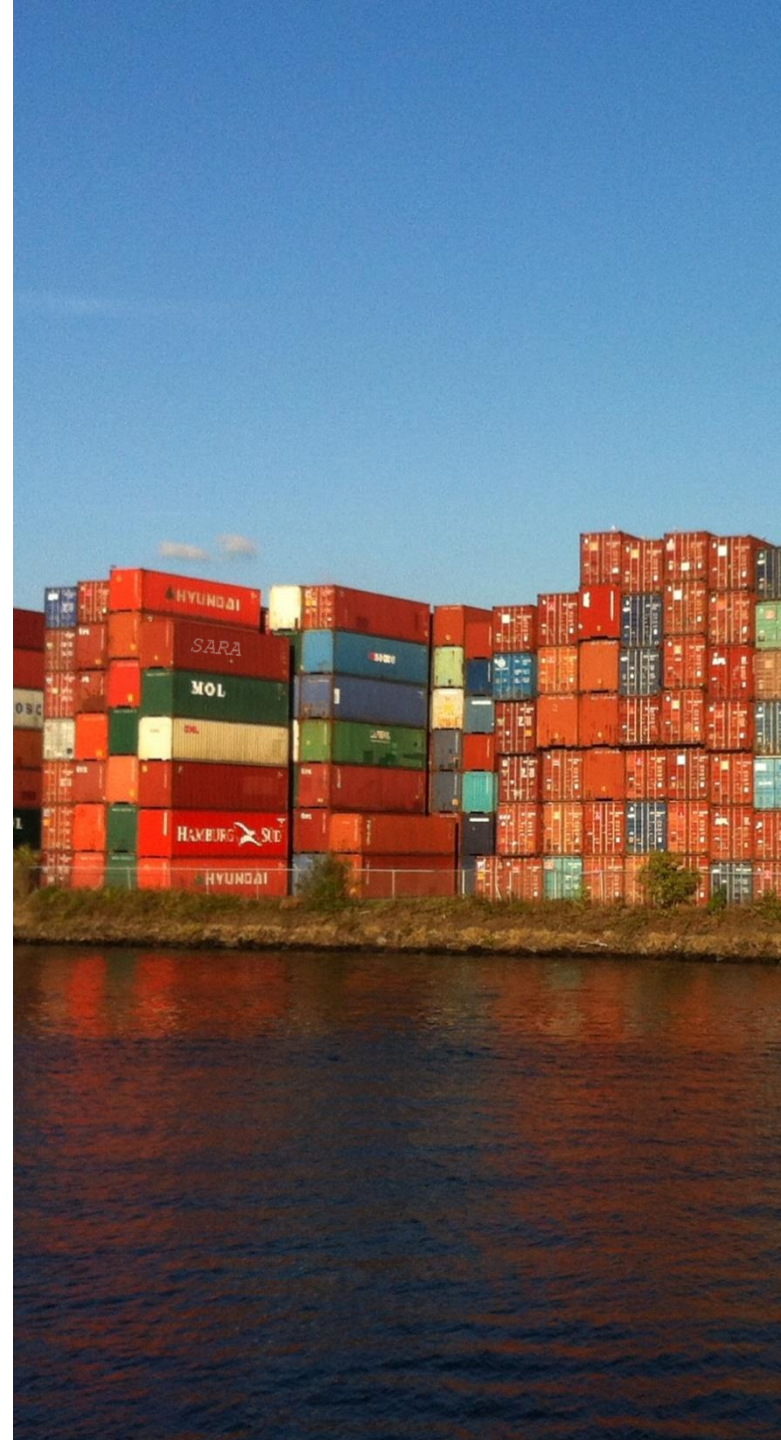
- Evaluation of data to assess baseline information
- Various modes in freight movement
- Typical local-Seattle supply chain
- Sustainable freight practices
- Conflicts & consistencies with other modal plans



Project Scope

Policy framework

- Vision statement (end state)
- Goals (desired outcomes)
- Objectives (how to accomplish)
- Performance measures (metrics to determine success)



What issues and outcomes would you like to see addressed in the Freight Master Plan?



Key findings to date

Stakeholder Outreach

- Online survey
 - Over 60 responses
- Three group interviews
 - Duwamish MIC, NSIA, & Downtown
- Individual interviews
 - Over 25
- Summary report in November



Key findings to date

What have we heard?

- Safety
- Reliability
- Efficiency
- Resiliency
- Economic Vibrancy
- Environment



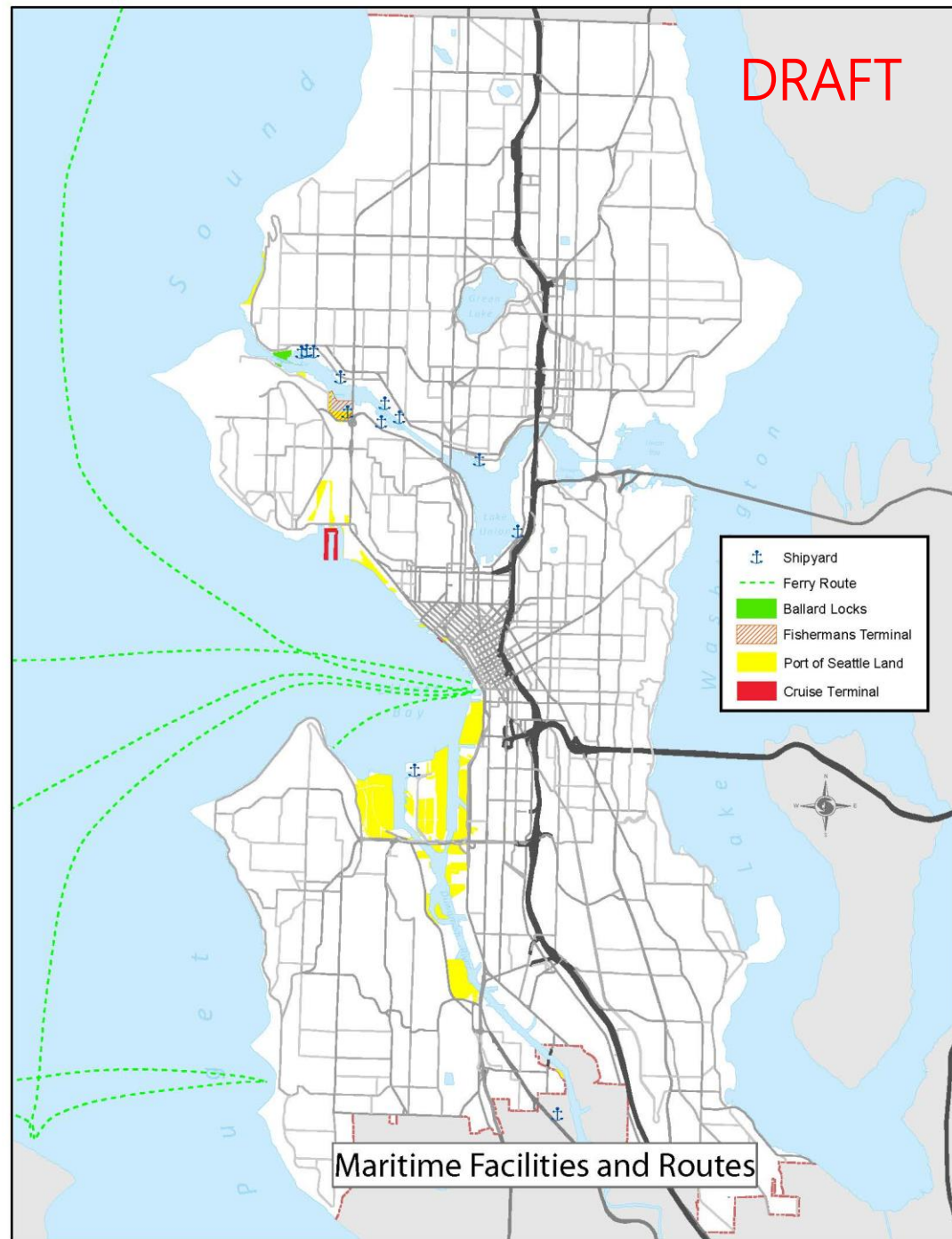
Existing conditions

- Regional freight network



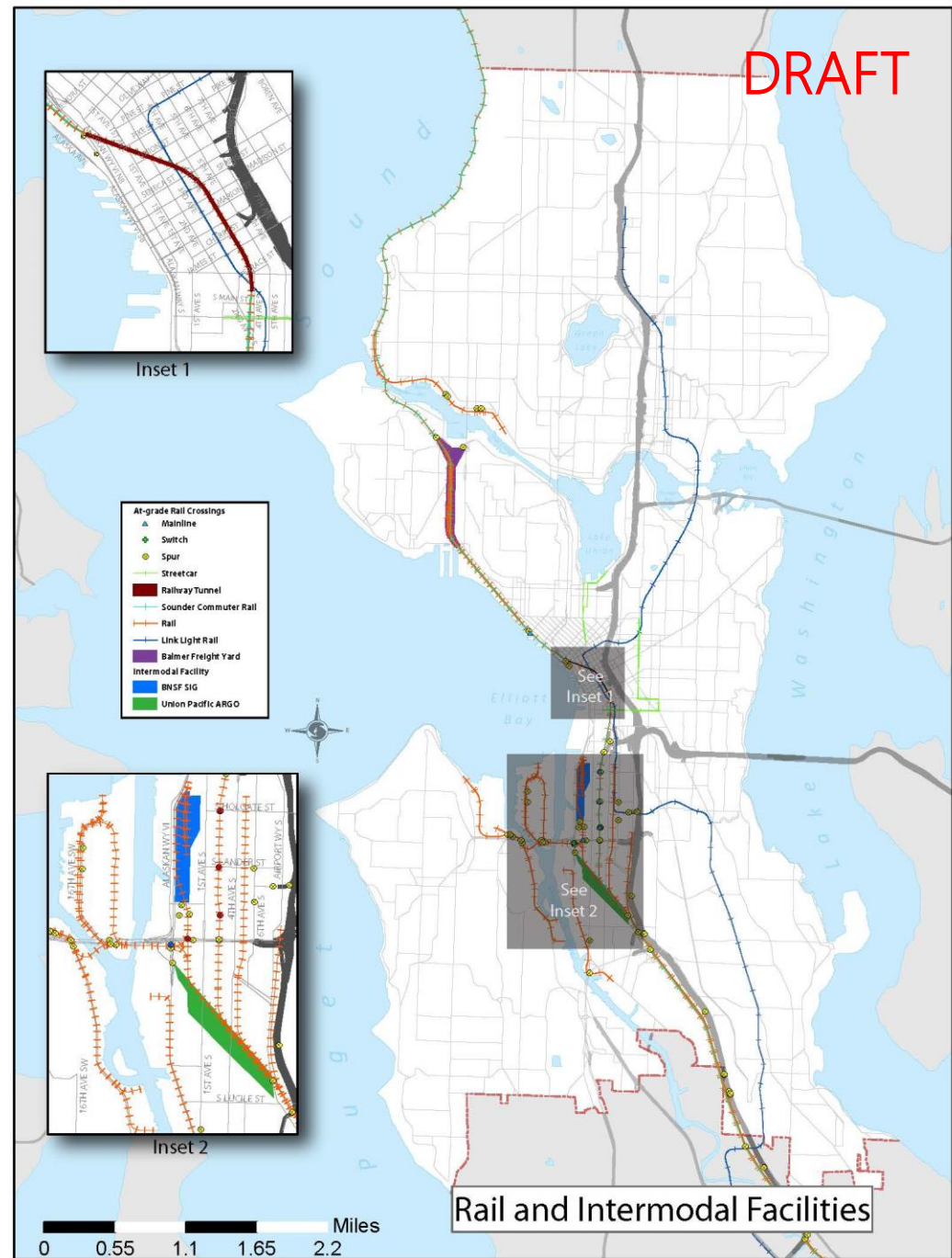
Existing conditions

- Maritime facilities and routes

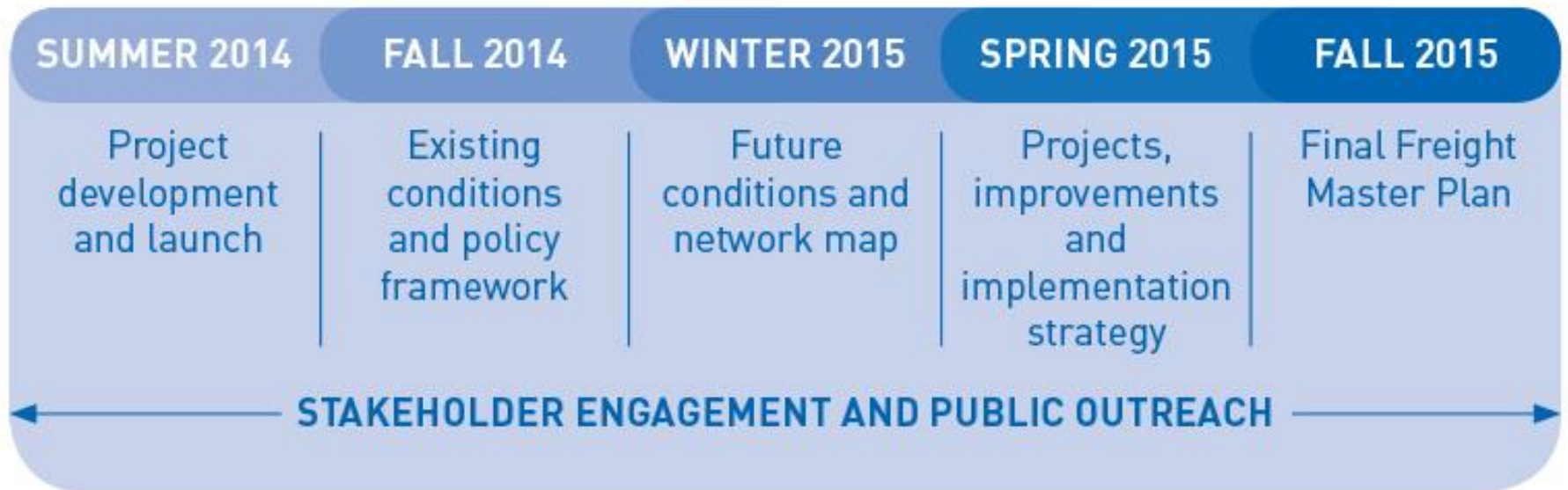


Existing conditions

- Rail and intermodal facilities



Schedule



Questions?

gabriela.vega@seattle.gov | (206) 733-9029

http://www.seattle.gov/transportation/freight_fmp.htm

<http://www.seattle.gov/transportation>

