



Seattle Police Department

SEA STAT

May 27, 2015

PRINCIPLES OF SEASTAT

1. Accurate and Timely Information

Know what is happening

2. Effective Tactics

Have a plan

3. Rapid Deployment

Do it quickly

4. Relentless Follow-Up and Assessment

If it works, do more. If not, do something else

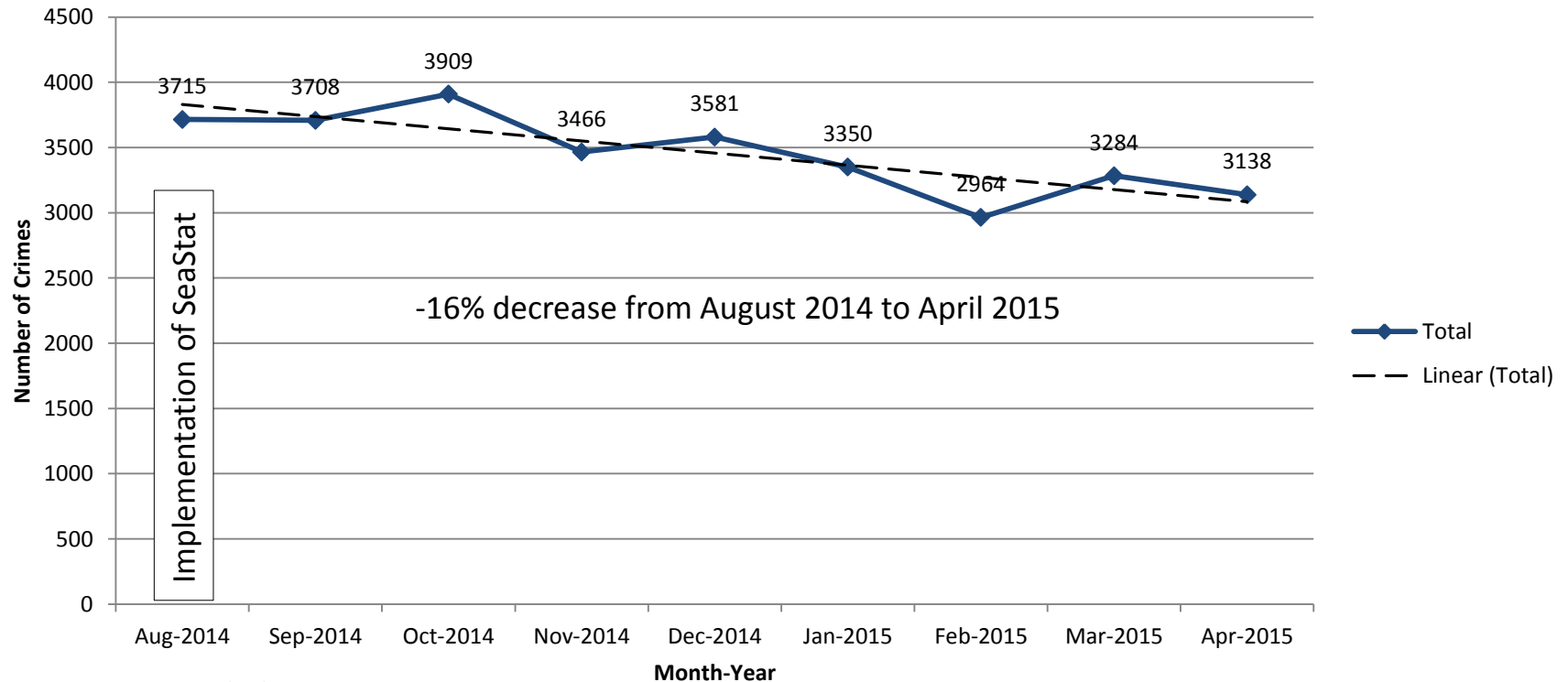
FORMULATING CRIME REDUCTION STRATEGIES

Focus on...

- *Problem Locations*
- *Prolific Offenders*
- *Repeat and Vulnerable Victims*

CITYWIDE MAJOR CRIME

Citywide Major Crime: Nine Month Trend Line August 1, 2014 to April 30, 2015



Data Source: SPD RMS 5/26/15.

Major Crime: Homicide, Rape, Robbery, Aggravated Assault, Burglary, Larceny-Theft (including car prowl and shoplift), and Motor Vehicle Theft.



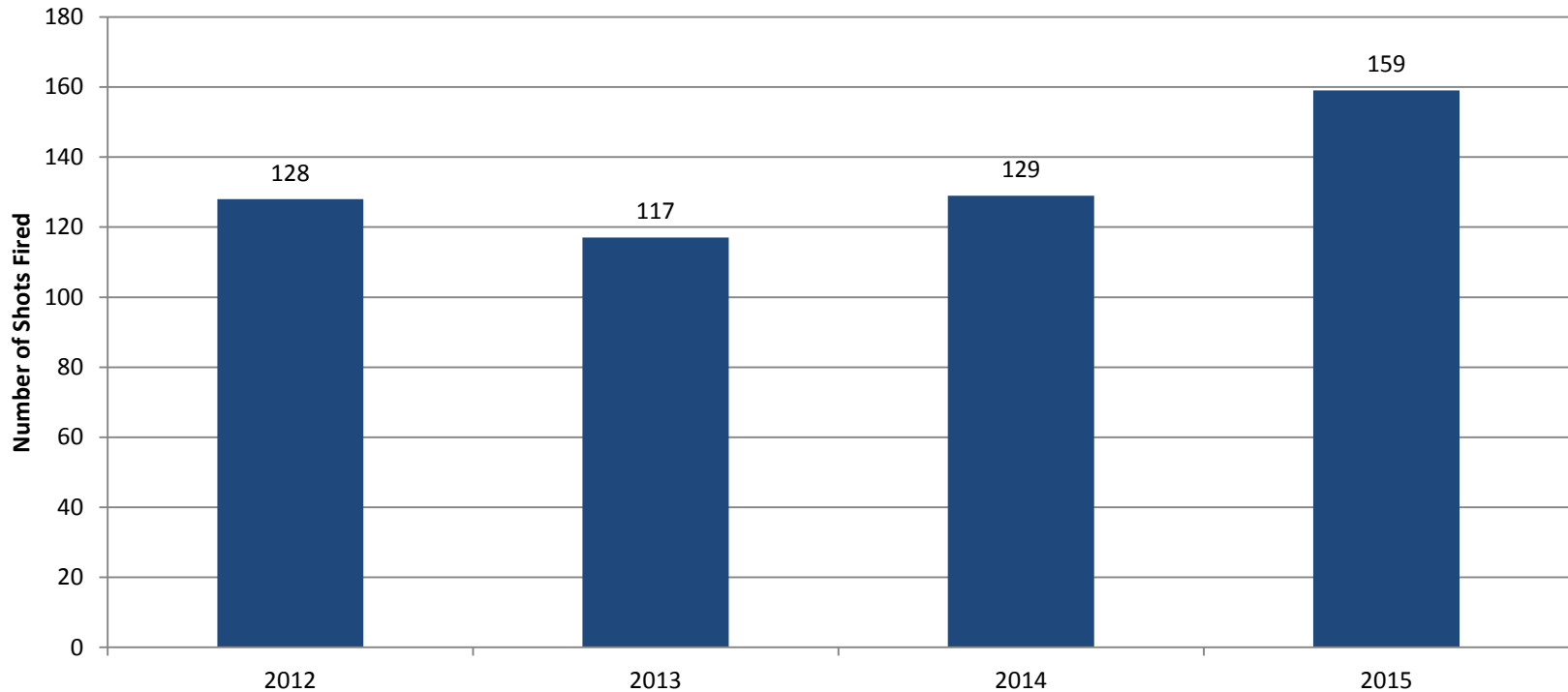
CITYWIDE MAJOR CRIME

28 Day & Year to Date (YTD) Detail

Crime Category	WEEK 1 04/26 - 05/02	WEEK 2 05/03 - 05/09	WEEK 3 05/10 - 05/16	WEEK 4 05/17 - 05/23	28 DAY Total	YTD 05/23 2014	YTD 05/23 2015	YTD Amount Change	YTD % Change
Homicide	1	0	0	0	1	8	6	-2	-25%
Rape	2	0	0	2	4	47	35	-12	-26%
Robbery	31	26	32	30	119	571	609	38	+7%
DV Assault - Aggravated	9	5	11	6	31	254	227	-27	-11%
Assault-Aggravated (Excludes DV)	32	30	23	30	115	490	499	9	+2%
Person Crime TOTAL	75	61	66	68	270	1,370	1,376	6	+0%
Burglary - Residential	116	119	103	96	434	1,966	1,940	-26	-1%
Burglary - Non-Residential	42	31	49	28	150	726	734	8	+1%
Larceny-Theft	168	221	209	160	758	4,674	4,610	-64	-1%
Carprowl/Theft-Auto Accessories-Auto Parts-License Plate	243	243	249	210	945	6,372	4,839	-1,533	-24%
Motor Vehicle Theft	84	60	71	70	285	2,090	1,568	-522	-25%
Property Crime TOTAL	653	674	681	564	2,572	15,828	13,691	-2,137	-14%
GRAND TOTAL	728	735	747	632	2,842	17,198	15,067	-2,131	-12%

SHOTS FIRED YEAR-TO-DATE

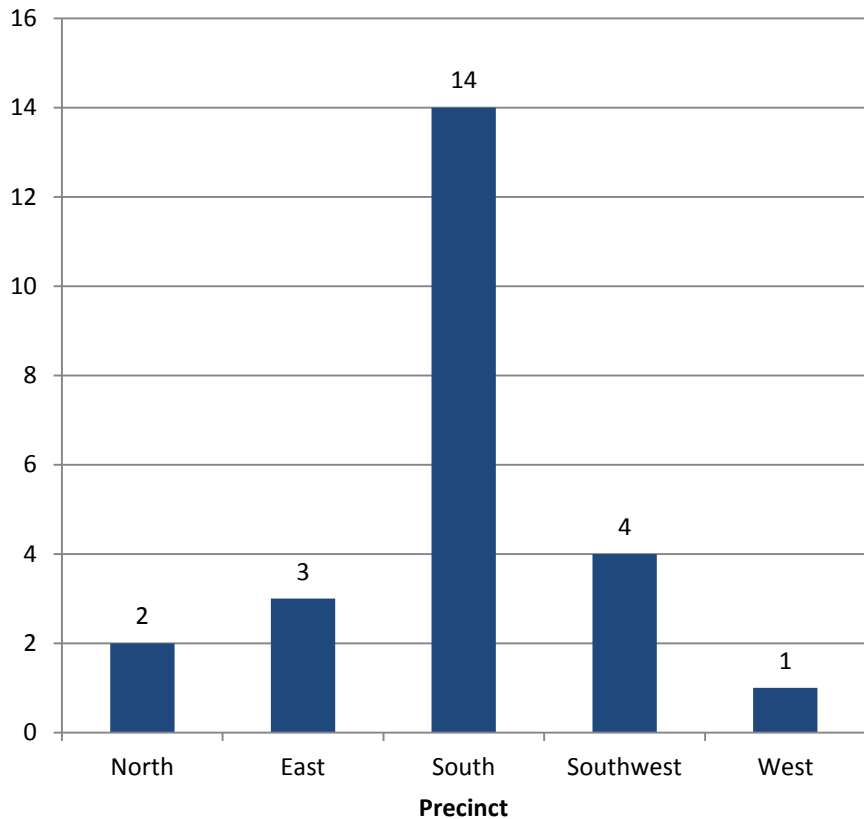
Shots Fired Year-to-Date
January 1st to May 25th (2012-2015)



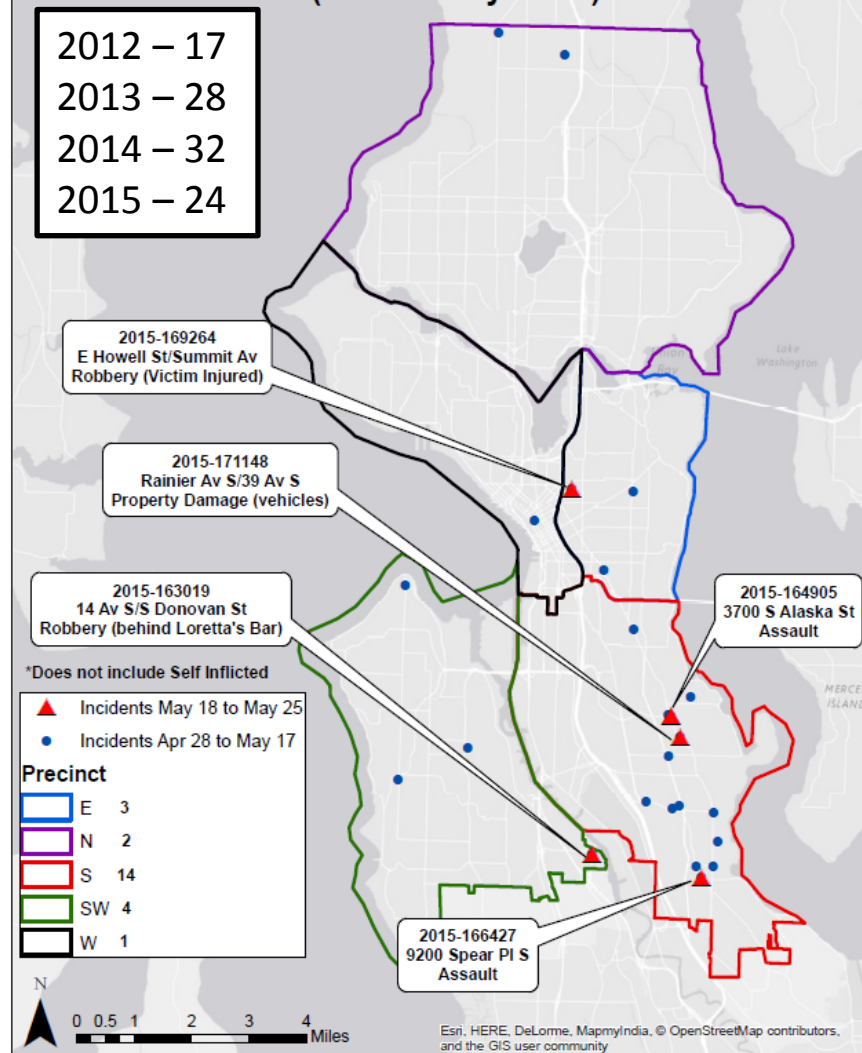
NIBIN/IBIS Hits 2015 YTD: 89

SHOTS FIRED: 28 DAYS

Shots Fired by Precinct
April 28, 2015 to May 25, 2015



Shots Fired April 28, 2015 to May 25, 2015
(24 GOs citywide*)



PRECINCT UPDATES

North



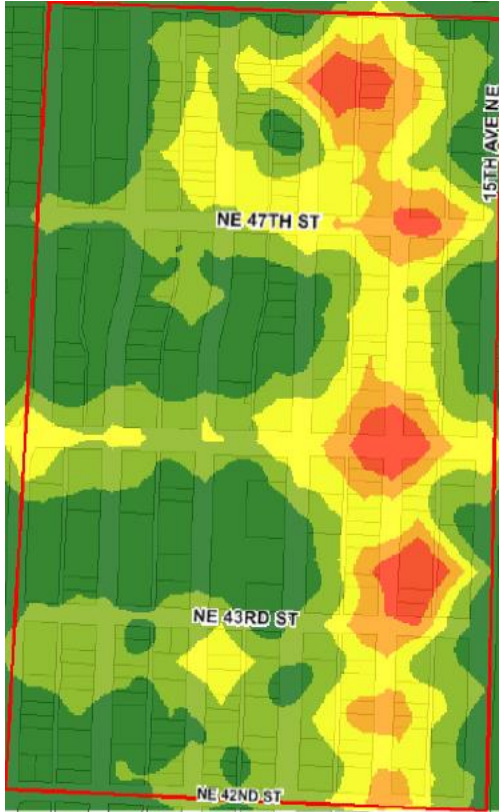
NORTH PRECINCT MAJOR CRIME

28 Day & Year to Date (YTD) Detail NORTH

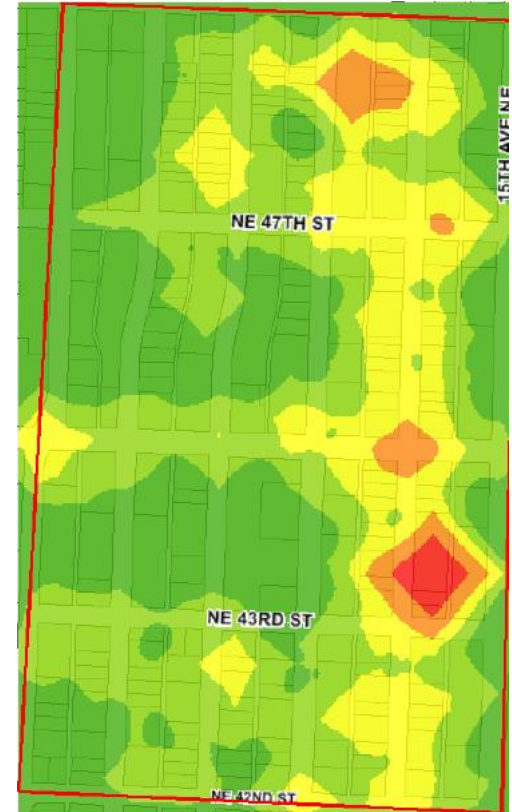
Crime Category	WEEK 1 04/26 - 05/02	WEEK 2 05/03 - 05/09	WEEK 3 05/10 - 05/16	WEEK 4 05/17 - 05/23	28 DAY Total	YTD 05/23 2014	YTD 05/23 2015	YTD Amount Change	YTD % Change
Homicide	1	0	0	0	1	1	2	1	+100%
Rape	2	0	0	1	3	14	15	1	+7%
Robbery	10	12	10	9	41	101	166	65	+64%
DV Assault - Aggravated	4	1	6	1	12	63	61	-2	-3%
Assault-Aggravated (Excludes DV)	5	5	4	7	21	113	123	10	+9%
Person Crime TOTAL	22	18	20	18	78	292	367	75	+26%
Burglary - Residential	47	41	47	44	179	792	737	-55	-7%
Burglary - Non-Residential	11	8	18	15	52	271	254	-17	-6%
Larceny-Theft	65	75	77	62	279	1,541	1,611	70	+5%
Carprowl/Theft-Auto Accessories-Auto Parts-License Plate	76	68	82	68	294	1,864	1,386	-478	-26%
Motor Vehicle Theft	38	28	29	30	125	916	658	-258	-28%
Property Crime TOTAL	237	220	253	219	929	5,384	4,646	-738	-14%
GRAND TOTAL	259	238	273	237	1,007	5,676	5,013	-663	-12%

NORTH PRECINCT

Call for Service Density



GO Density



University Ave. Project

Jan 1, 2014 – May 12, 2015

- 3% of Union Sector
- 19% of Union Sector Calls for Service
- 17% of Union Sector GOs
- 18% of Union Sector Officer Service Time

PRECINCT UPDATES

East



EAST PRECINCT MAJOR CRIME

28 Day & Year to Date (YTD) Detail EAST

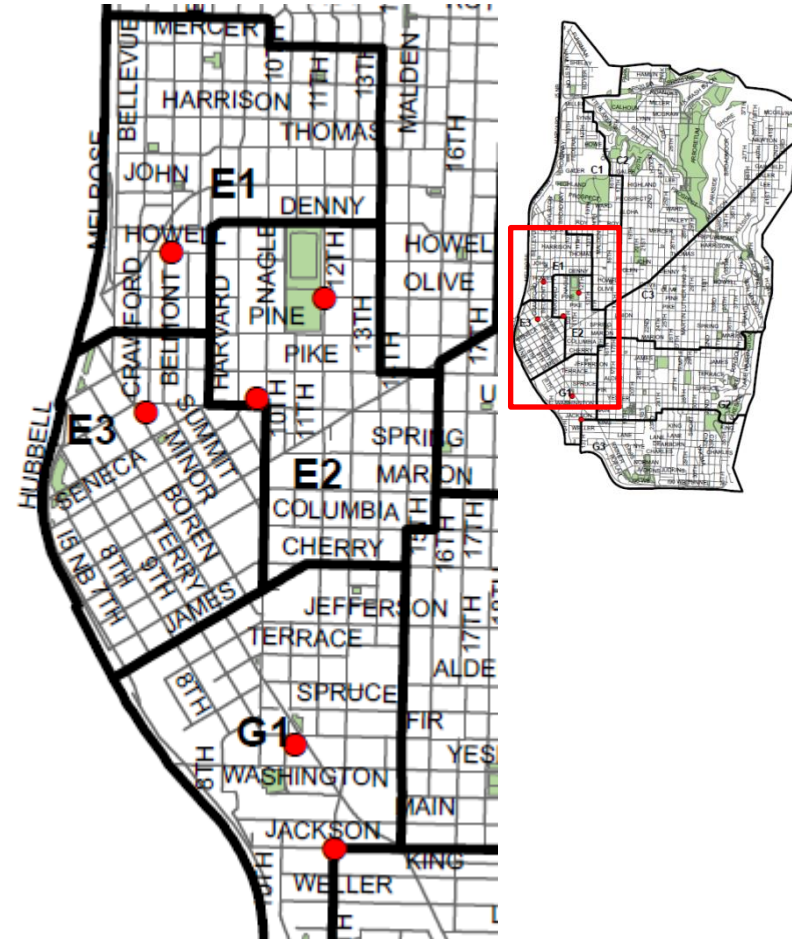
Crime Category	WEEK 1 04/26 - 05/02	WEEK 2 05/03 - 05/09	WEEK 3 05/10 - 05/16	WEEK 4 05/17 - 05/23	28 DAY Total	YTD 05/23 2014	YTD 05/23 2015	YTD Amount Change	YTD % Change
Homicide	0	0	0	0	0	3	1	-2	-67%
Rape	0	0	0	1	1	6	5	-1	-17%
Robbery	6	2	2	4	14	76	94	18	+24%
DV Assault - Aggravated	2	2	2	0	6	40	41	1	+3%
Assault-Aggravated (Excludes DV)	10	10	3	4	27	87	97	10	+11%
Person Crime TOTAL	18	14	7	9	48	212	238	26	+12%
Burglary - Residential	21	15	16	16	68	282	324	42	+15%
Burglary - Non-Residential	5	6	4	0	15	99	78	-21	-21%
Larceny-Theft	20	33	33	20	106	687	642	-45	-7%
Carprowl/Theft-Auto Accessories-Auto Parts-License Plate	46	50	44	29	169	1,324	920	-404	-31%
Motor Vehicle Theft	15	4	12	15	46	299	207	-92	-31%
Property Crime TOTAL	107	108	109	80	404	2,691	2,171	-520	-19%
GRAND TOTAL	125	122	116	89	452	2,903	2,409	-494	-17%

EAST PRECINCT STREET ROBBERY

April 26 – May 24, 2015

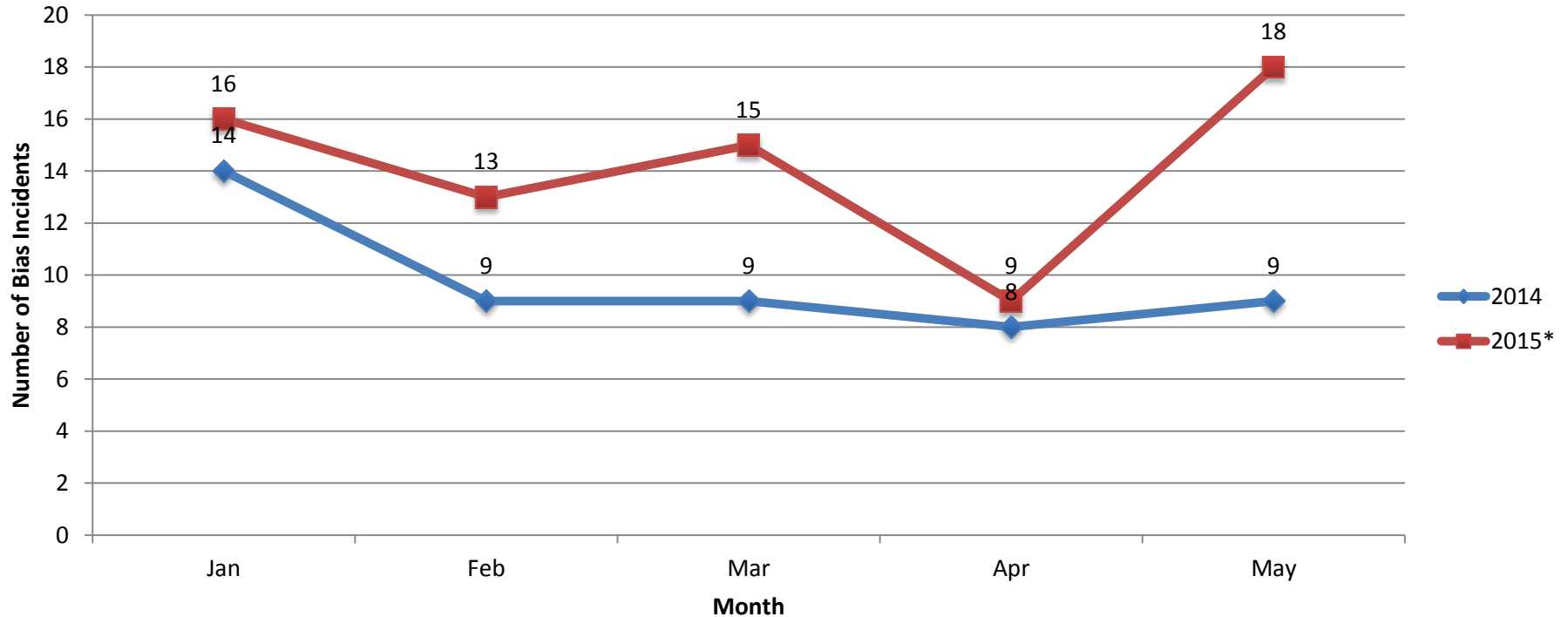
Six Incidents for the Precinct

- 3 Bodily Force
- 2 Gun
- 1 Weapon



BIAS INCIDENTS

Citywide Bias Incidents by Month January to May (2014 and 2015)



*2015 data as of May 23, 2015.

Bias Incidents include: (1) Malicious Harassment; (2) Crime with Bias Element; and (3) Bias Incident (Non-Criminal).

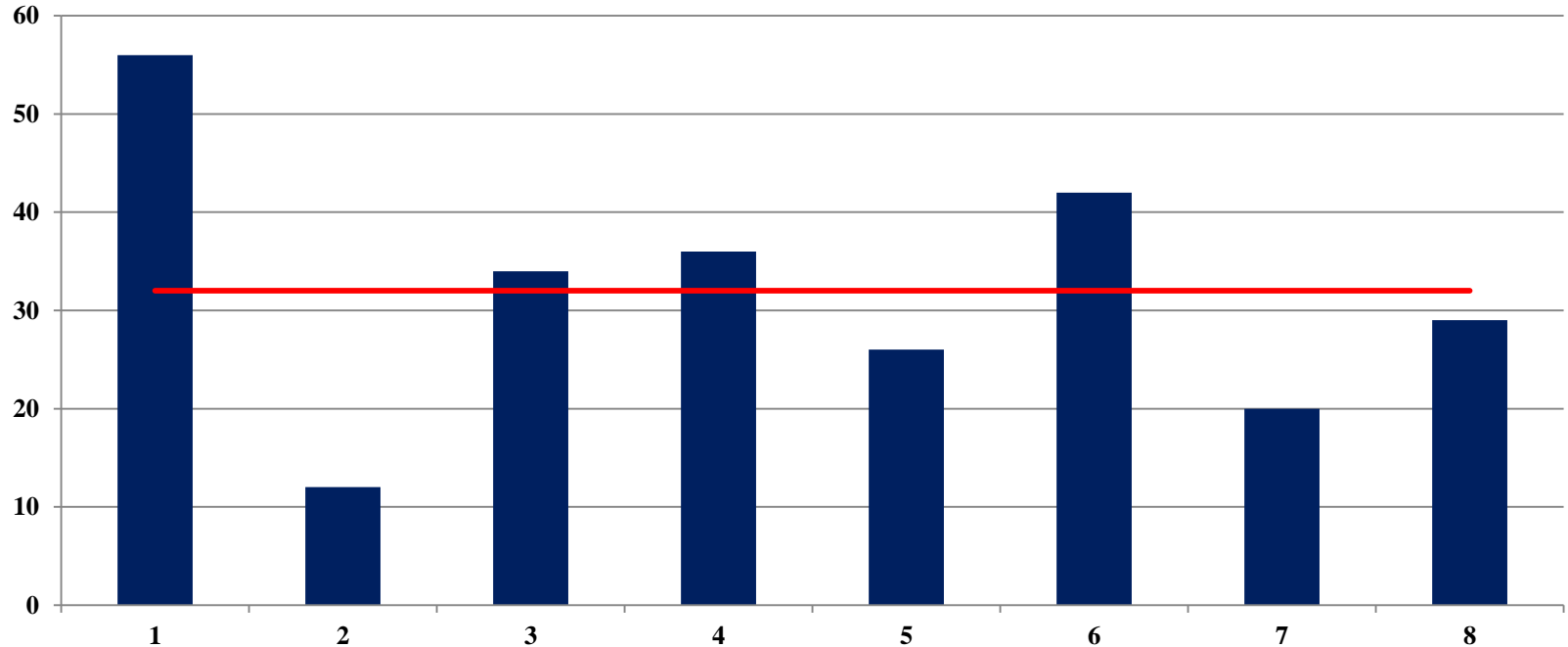
COMPLIANCE UPDATE

OVERVIEW

EAST PRECINCT TERRY STOP PILOT

(MARCH 15, 2015 – MAY 14, 2015)

Number of *Terry* Stop Templates Completed per Week



EAST PRECINCT TERRY STOP PILOT

(MARCH 15, 2015 – MAY 14, 2015)

	First Watch	Second Watch	Third Watch	
Sunday	26	13	15	54
Monday	15	12	12	39
Tuesday	9	6	16	31
Wednesday	20	17	6	43
Thursday	4	12	7	23
Friday	17	6	15	38
Saturday	21	7	14	42
	<i>112</i>	<i>73</i>	<i>85</i>	270

EAST PRECINCT TERRY STOP PILOT

(MARCH 15, 2015 – MAY 14, 2015)

Report Type	Count of Templates
Follow-up	75
GO	106
Street Check	89

EAST PRECINCT TERRY STOP PILOT

