



Seattle Police Department

SEA STAT



DATA-DRIVEN

November 23, 2016



PRINCIPLES OF SEASTAT

1. Accurate and Timely Information

Know what is happening

2. Effective Tactics

Have a plan

3. Rapid Deployment

Do it quickly

4. Relentless Follow-up and Assessment

If it works, do more. If not, do something else

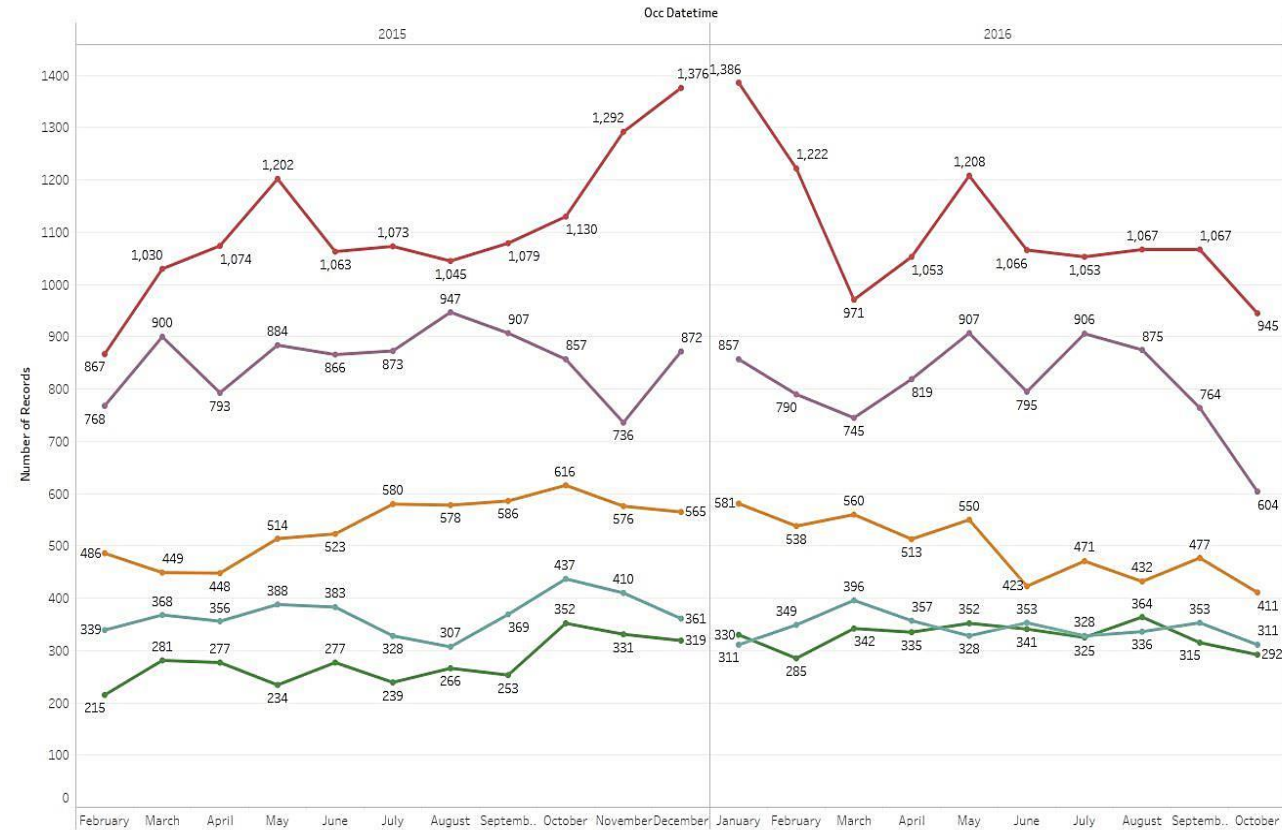
FORMULATING CRIME REDUCTION STRATEGIES

Focus on...

- *Problem Locations*
- *Prolific Offenders*
- *Repeat and Vulnerable Victims*

MCTF PRECINCT COMPARISON

Citywide Property Crime



- Precinct
- East
 - North
 - South
 - Southwest
 - West

Top 3 North Pct. Neighborhoods w/Decrease

	2015 (Feb-Oct)	2016 (Feb-Oct)
Ballard	+20%	-41%
South		
Fremont	+36%	-47%
Greenwood	+42%	-32%



CITYWIDE MAJOR CRIME

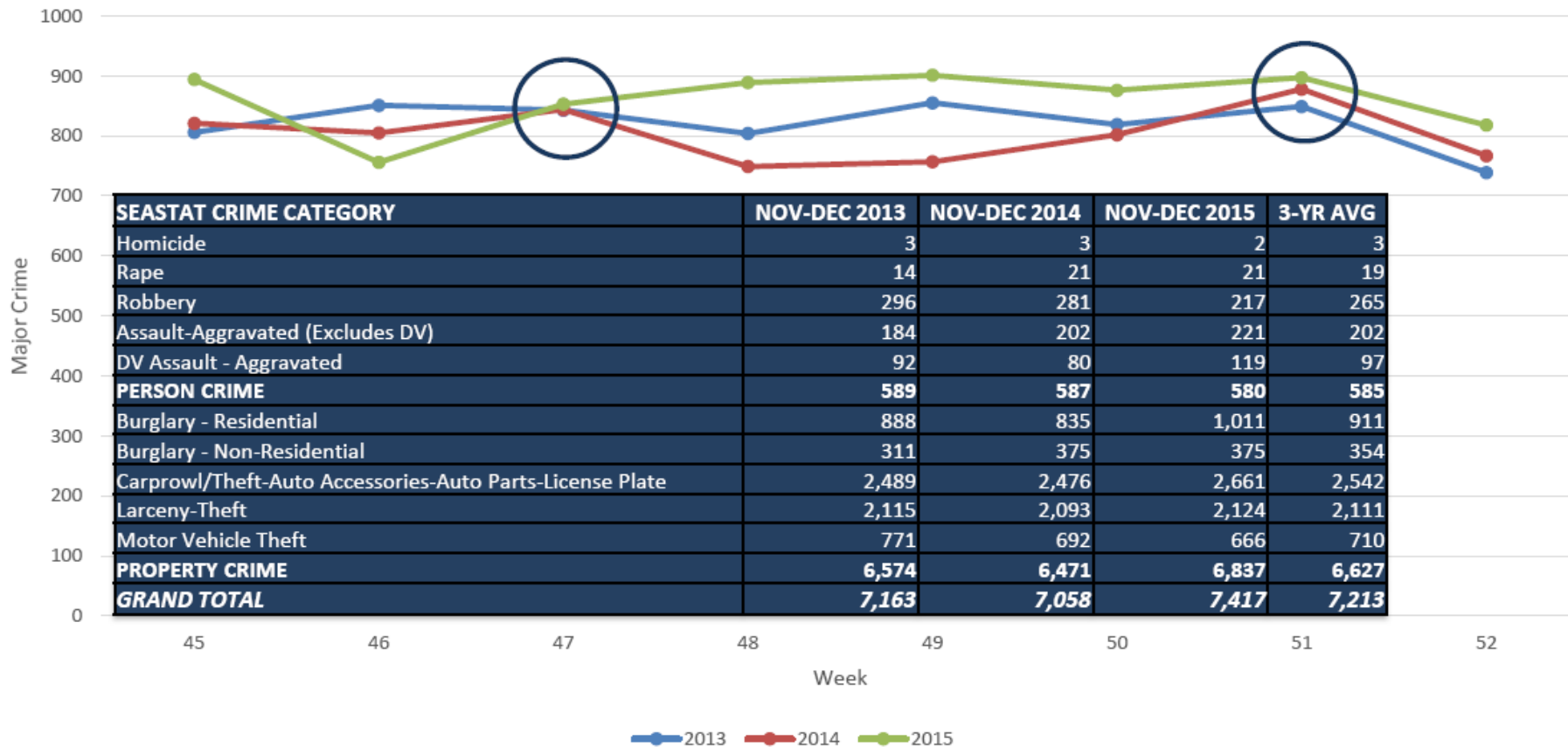
28 Day & Year to Date (YTD) Detail

Crime Category	28 DAY Total	28 DAY Range	YTD 11/19 2016	YTD Range	YTD 11/19 2015	YTD Amount Change	YTD % Change
Homicide	1	0 - 1	16	18 - 22	22	-6	-27%
Rape	10	4 - 12	141	89 - 107	100	41	+41%
Robbery	113	101 - 157	1,374	1259 - 1425	1,396	-22	-2%
DV Assault - Aggravated	45	37 - 51	530	488 - 612	500	30	+6%
Assault-Aggravated (Excludes DV)	113	81 - 103	1,376	1020 - 1260	1,325	51	+4%
Person Crime TOTAL	282	245 - 305	3,437	2968 - 3332	3,343	94	+3%
Burglary - Residential	380	400 - 474	4,494	4153 - 4833	4,780	-286	-6%
Burglary - Non-Residential	144	113 - 183	2,017	1533 - 1777	1,818	199	+11%
Larceny-Theft	753	840 - 970	10,585	9942 - 11374	11,125	-540	-5%
Carprowl/Theft-Auto Accessories-Auto Parts-License Plate	1,033	790 - 1308	12,542	9576 - 12968	11,959	583	+5%
Motor Vehicle Theft	365	242 - 408	3,488	2801 - 4415	3,263	225	+7%
Property Crime TOTAL	2,675	2513 - 3215	33,126	28391 - 34981	32,945	181	+1%
GRAND TOTAL	2,957	2764 - 3514	36,563	31400 - 38274	36,288	275	+1%

Operations Dashboard Snapshot – 11/22/16

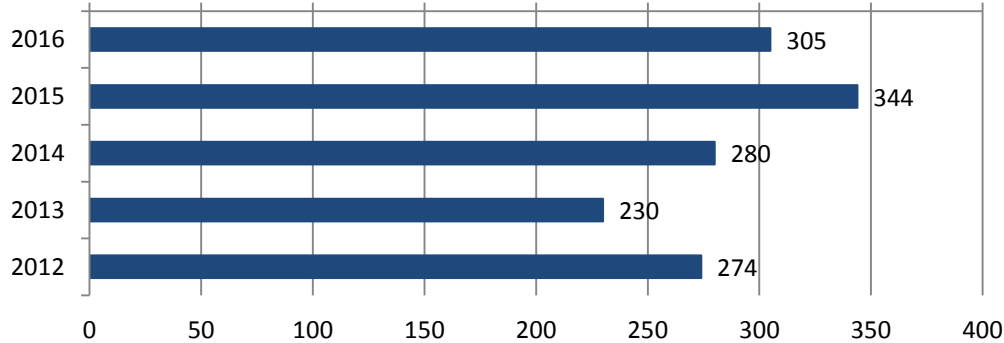
SEASONALITY ANALYSIS

Major Crime by Week for the Months of November and December

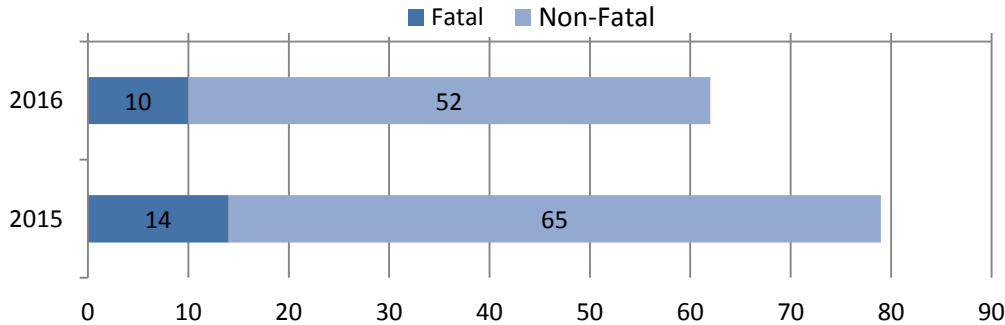


SHOTS FIRED REPORT

Shots Fired YTD
January 1 to November 21 (2012-2016)



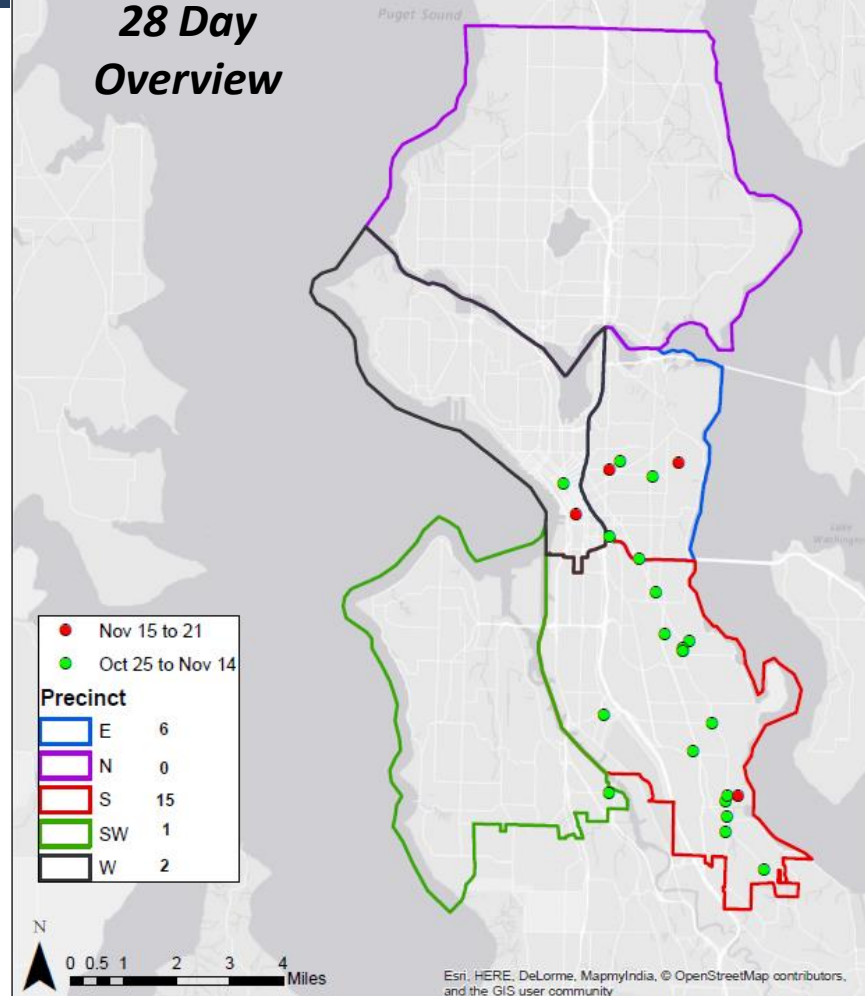
Shootings by Injury Type YTD
January 1 to November 21 (2015 and 2016)



Shots Fired October 25, 2016 to November 21, 2016 (24 GOs citywide*)

*Does not include most Self Inflicted or OIS

28 Day Overview



Shots Fired counts are comprised of multi-category general offense reports with evidence of, or eyewitnesses to, shots fired. Self-inflicted and Officer Involved Shootings are excluded. Report inception: 2012.