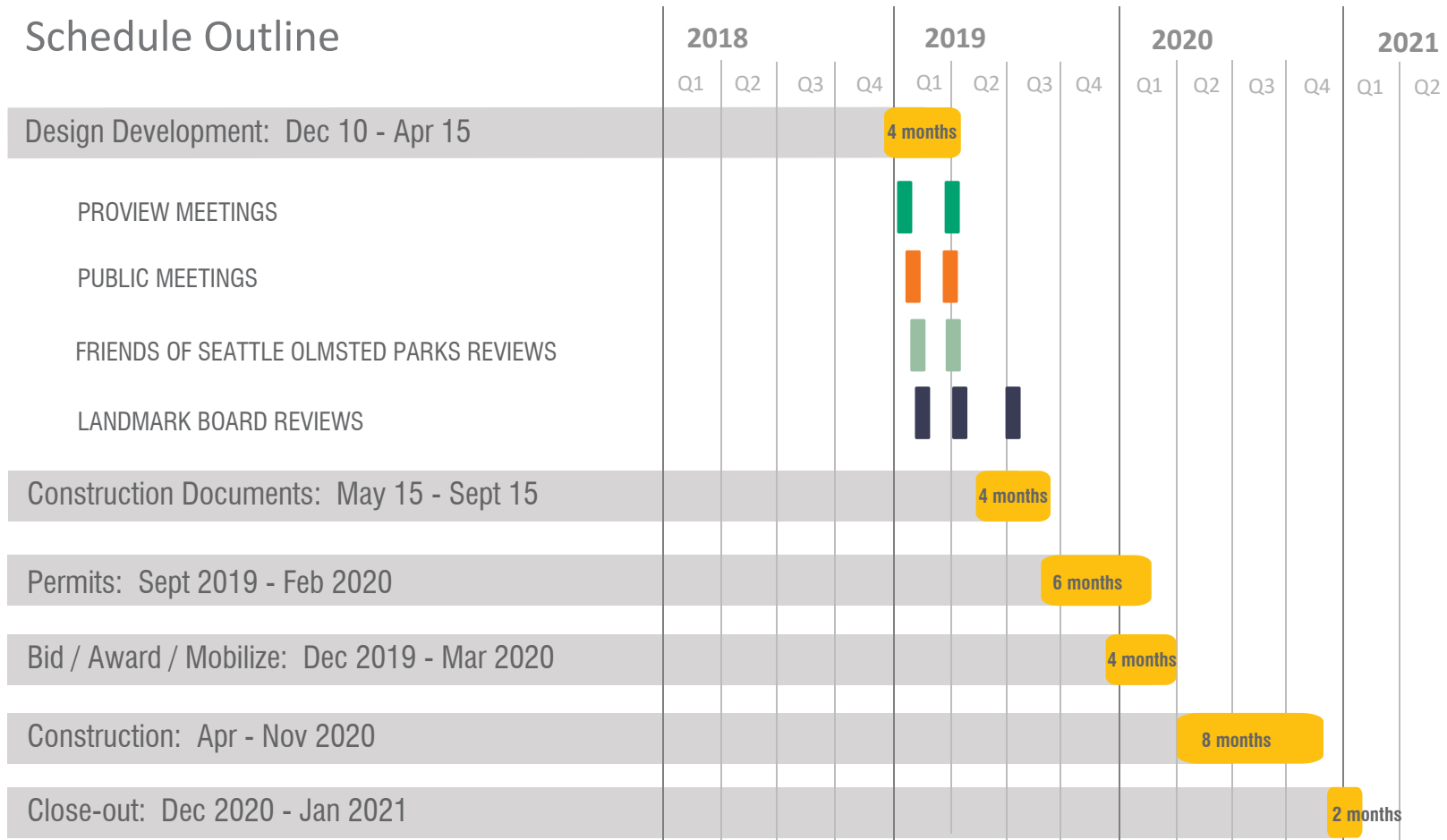




# VOLUNTEER PARK AMPHITHEATER

VOLUNTEER PARK TRUST / SEATTLE PARKS & RECREATION / ORA + WALKER MACY

# Schedule Outline



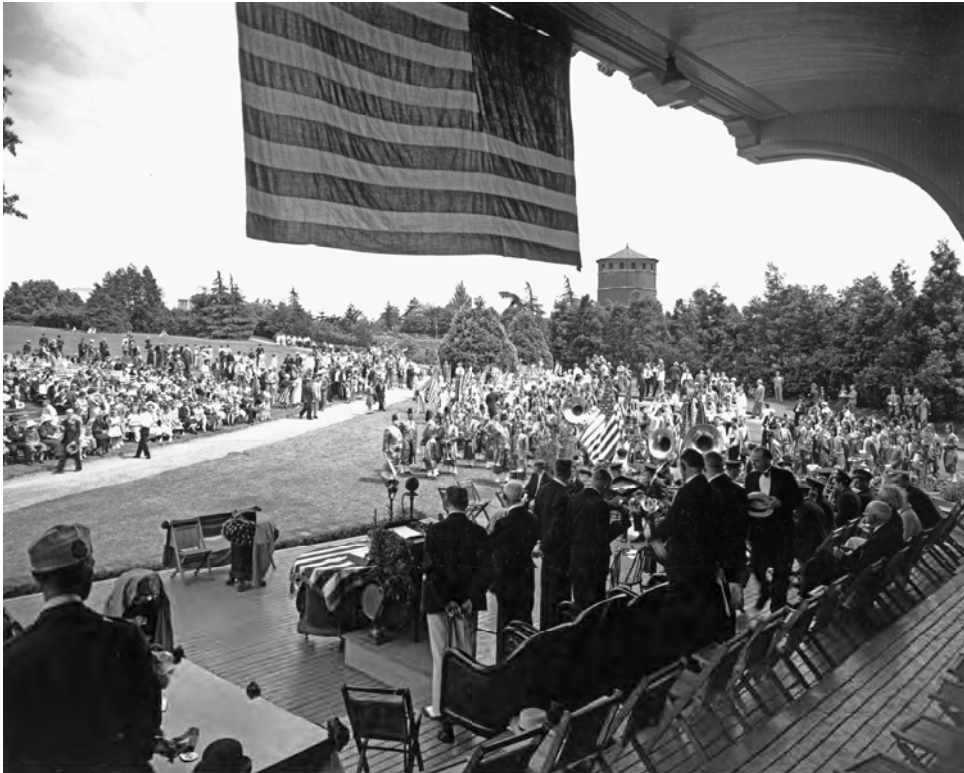
## PROCESS / SCHEDULE OVERVIEW





1913 PARK VIEW (BAND PAVILION WITH SEATING ON RIGHT; DEMOLISHED IN 1931)  
ORIGINAL BAND PAVILION





VIEW FROM BANDSHELL LOOKING SOUTHEAST



VIEW FROM GREAT LAWN LOOKING WEST

1915 BAND SHELL (DEMOLISHED 1947)





1971 AMPHITHEATER - EXISTING

## EXISTING CONDITIONS

- Impacts Views to the forest
- Looks Abandoned when not in use
- No Wheelchair or Mobility Access
- Inflexible and poorly configured to support diverse performances
- Lack of back stage spaces and poor weather protection
- Lack of roof cover causes more sound dispersion with less directed sound to audience
- Safety issues due to concealed public restrooms and limited view to public pathway behind stage



SEATTLE SHAKESPEARE COMPANY



ERITREAN INDEPENDANCE DAY CELEBRATION



SPOKEN WORD / MUSIC



SEATTLE CHAMBER MUSIC SOCIETY



YOUTH PERFORMANCES



SAAM MOVIES IN THE PARK

# 1971 AMPHITHEATER - EXISTING CONDITIONS & USES





RESTROOMS / BACK OF HOUSE



RESTROOMS / WEST PATHWAY



GREENSTAGE / SHAKESPEARE IN THE PARK



COSTUME / PERFORMANCE SUPPORT ON THE LAWN

## 1971 AMPHITHEATER - EXISTING CONDITIONS & USES





PATH / LANDSCAPE SOUTH OF STAGE



PATH SOUTH OF GREAT LAWN - LOOKING EAST



PATH FROM LILY POND



FUTURE ADA PARKING STALLS



SIDEWALK TO GRAVEL TRANSITION



LILY POND WITH RENEWED FENCE

## EXISTING PATHWAYS / ADA UPGRADES



## COMMUNITY ENGAGEMENT (2015-2017)

- COMMUNITY MEETINGS
- NEIGHBOR / ON-SITE INTERVIEWS
- SUMMER PICNICS / HOLIDAY IN THE PARK
- ARTS & CULTURAL GROUP REVIEWS
- SEATTLE LANDMARK BOARD REVIEWS
- FRIENDS OF SEATTLE OLMSTED PARKS



COMMUNITY REVIEWS

*"Our company loves the beautiful setting of Volunteer Park, and with a beautiful and functional amphitheater space, there is an expanded potential for public engagement with the arts."*

- George Mount, Seattle Shakespeare

*"I cannot wait...to see exquisite dances performed in [Volunteer Park], and have Seattle join the list of very few American cities to have professional public outdoor dance performances."*

-Olivier Wevers, Whim W'Him



VOLUNTEER PARK SUMMER PICNIC & FAMILY ENGAGEMENT

# CORE PRINCIPLES

- **ENHANCE OLMSTED LANDSCAPE**

- Distinctive Character / Support Olmsted Vision

- **IMPROVE QUALITY OF SPACE FOR DAILY PARK USERS**

- design for non-event / informal use and views

- **BROADEN PERFORMANCE DIVERSITY - NOT SIZE**

- existing 500-600 audience capacity is optimal

- **PROVIDE ACCESSIBILITY FOR ALL**

- ADA pathways, parking, audience, and backstage

- **IMPROVE ACOUSTIC QUALITY & NOISE MANAGEMENT**

- physical acoustic improvements

- event management

- **IMPROVE SAFETY AND ACCESS**

- lighting; improved visibility and safety

- maintenance and management





# SITE ANALYSIS

- **PARK CHARACTER**

- Olmsted Vision, Grading of the Lawn

- **SITE INVENTORY**

- Sun Angles and Views

- **ACCESS**

- Parking, Pedestrian, Bike, & Transit

- **ACOUSTICS**

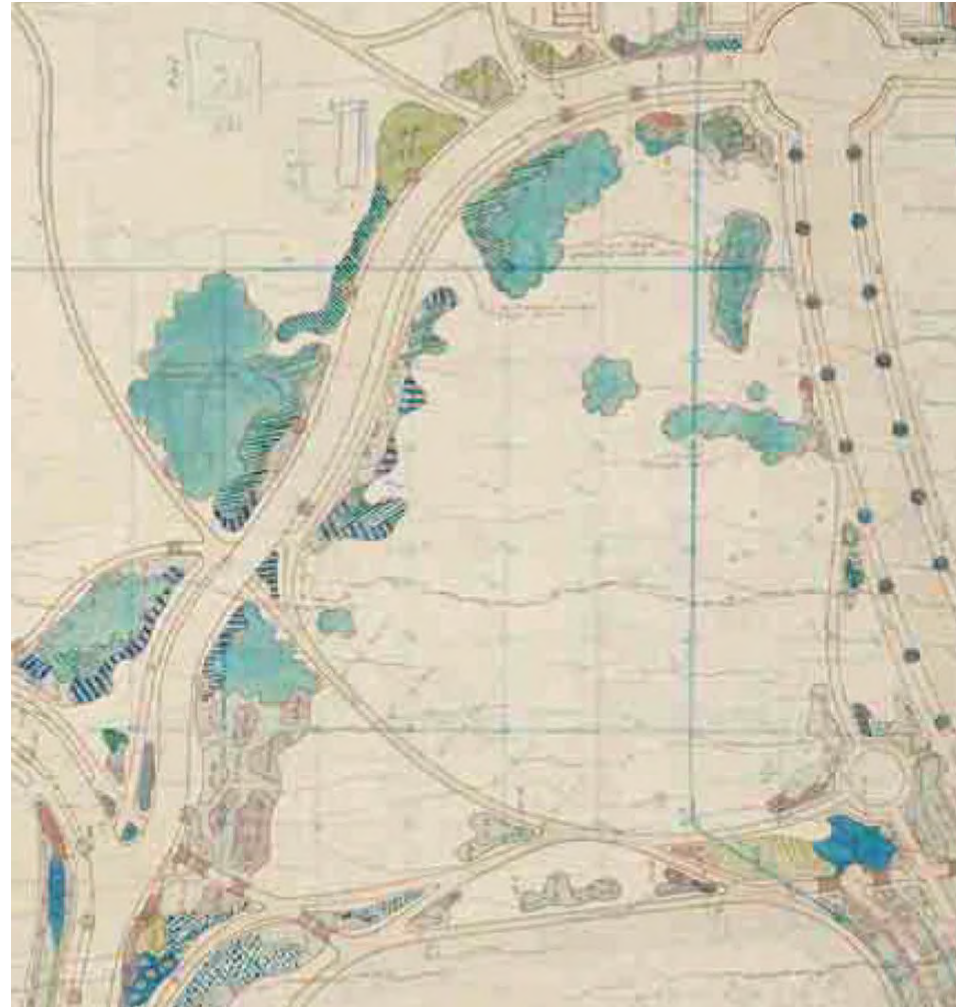
- Control Noise Pollution

- Enhance Audience Experience





EXISTING PLAN

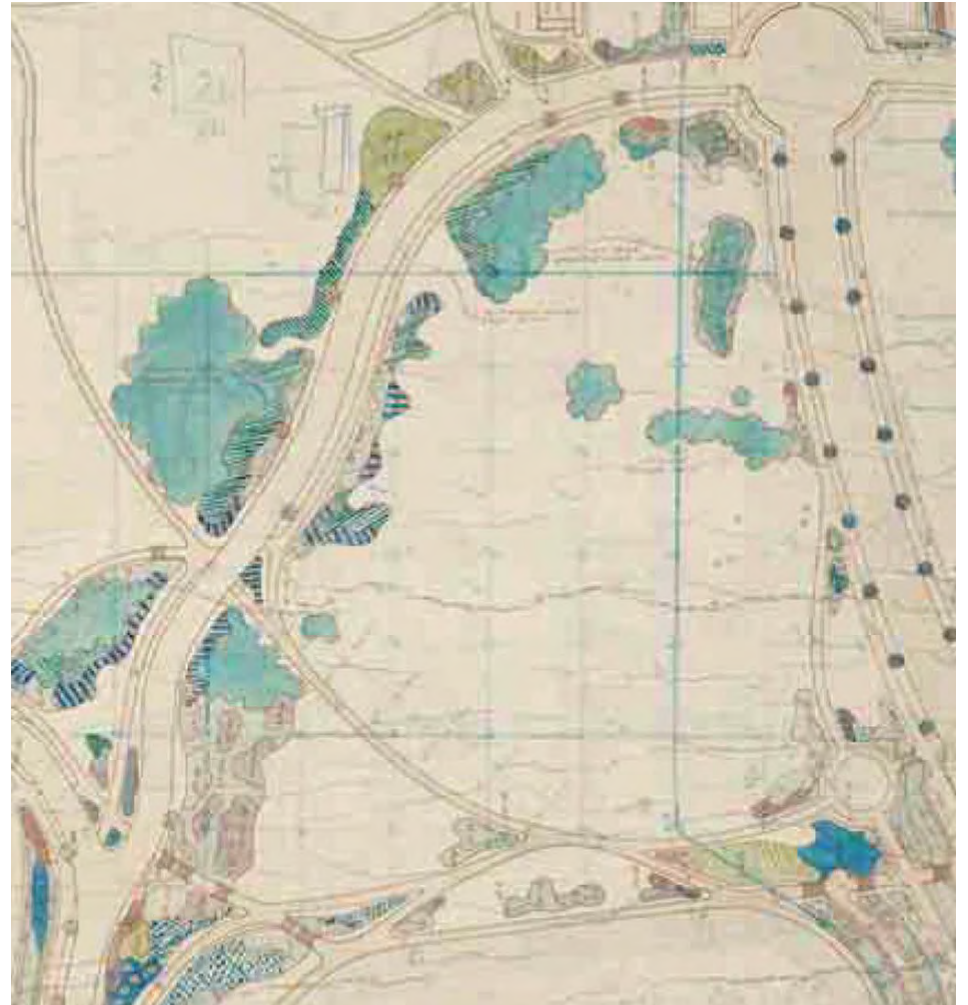


OLMSTED PLAN

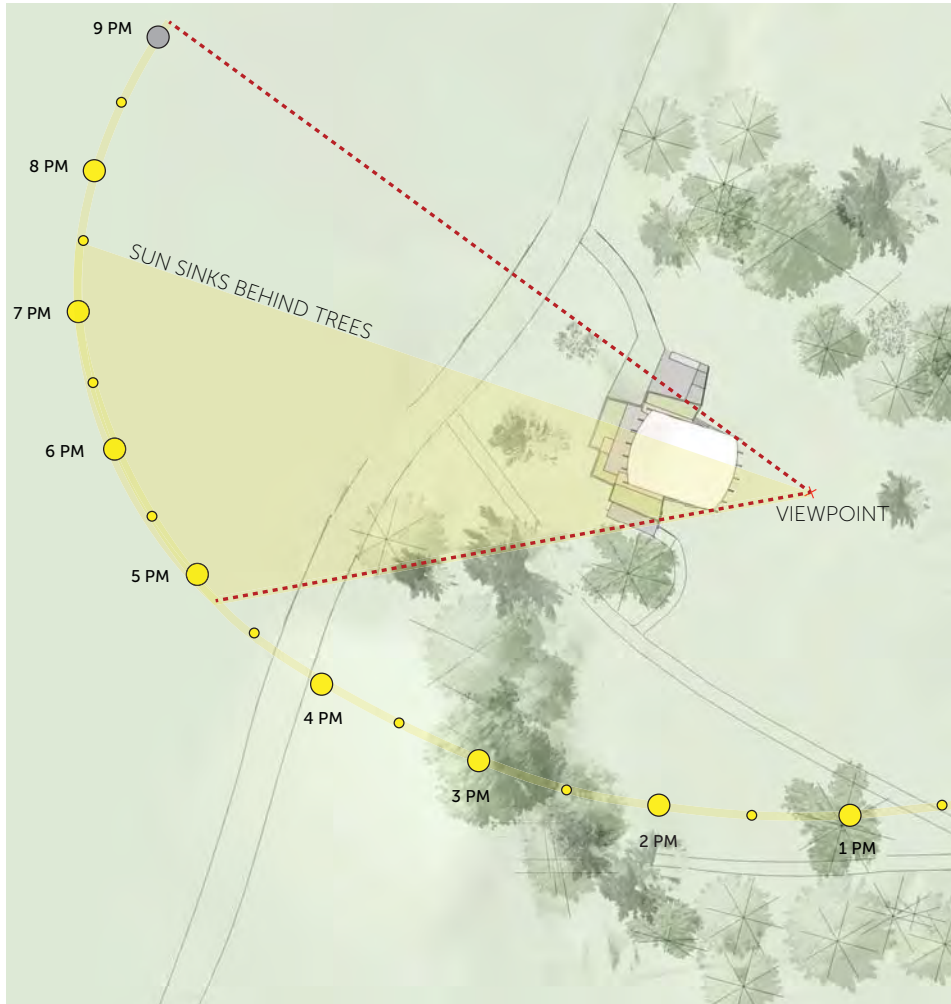




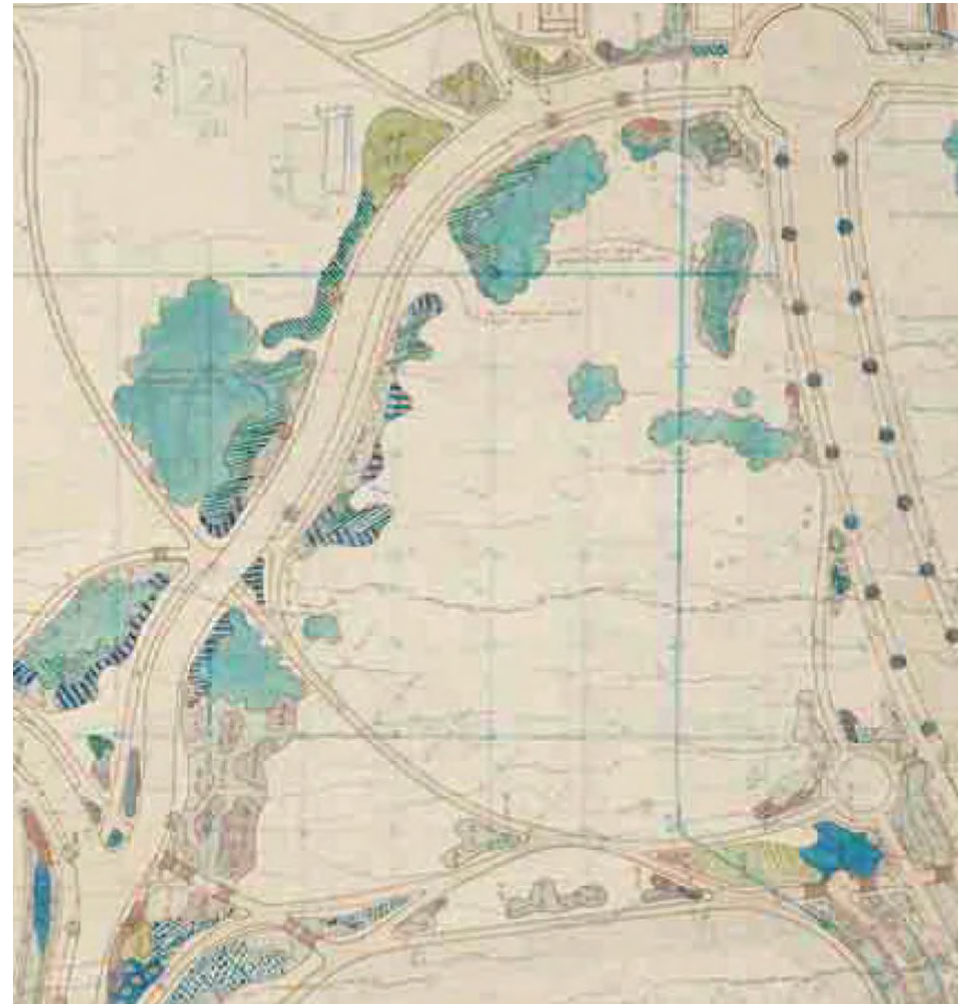
SCHEMATIC SITE PLAN 2017



OLMSTED PLAN



2017 SUN STUDY @ SUMMER SOLSTICE



OLMSTED PLAN





SCHEMATIC SITE PLAN - CURRENT

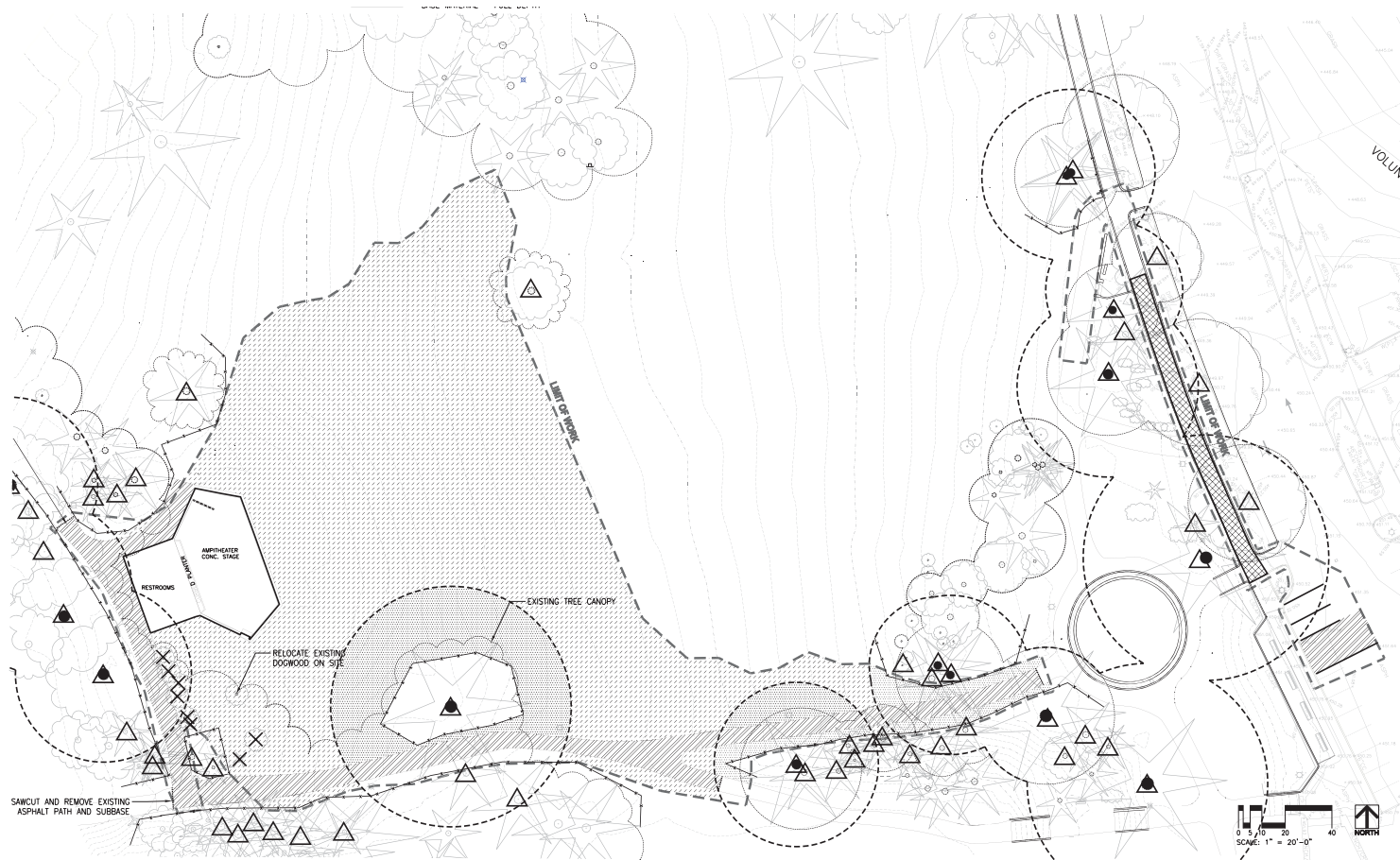


OLMSTED PLAN



SCHEMATIC SITE PLAN

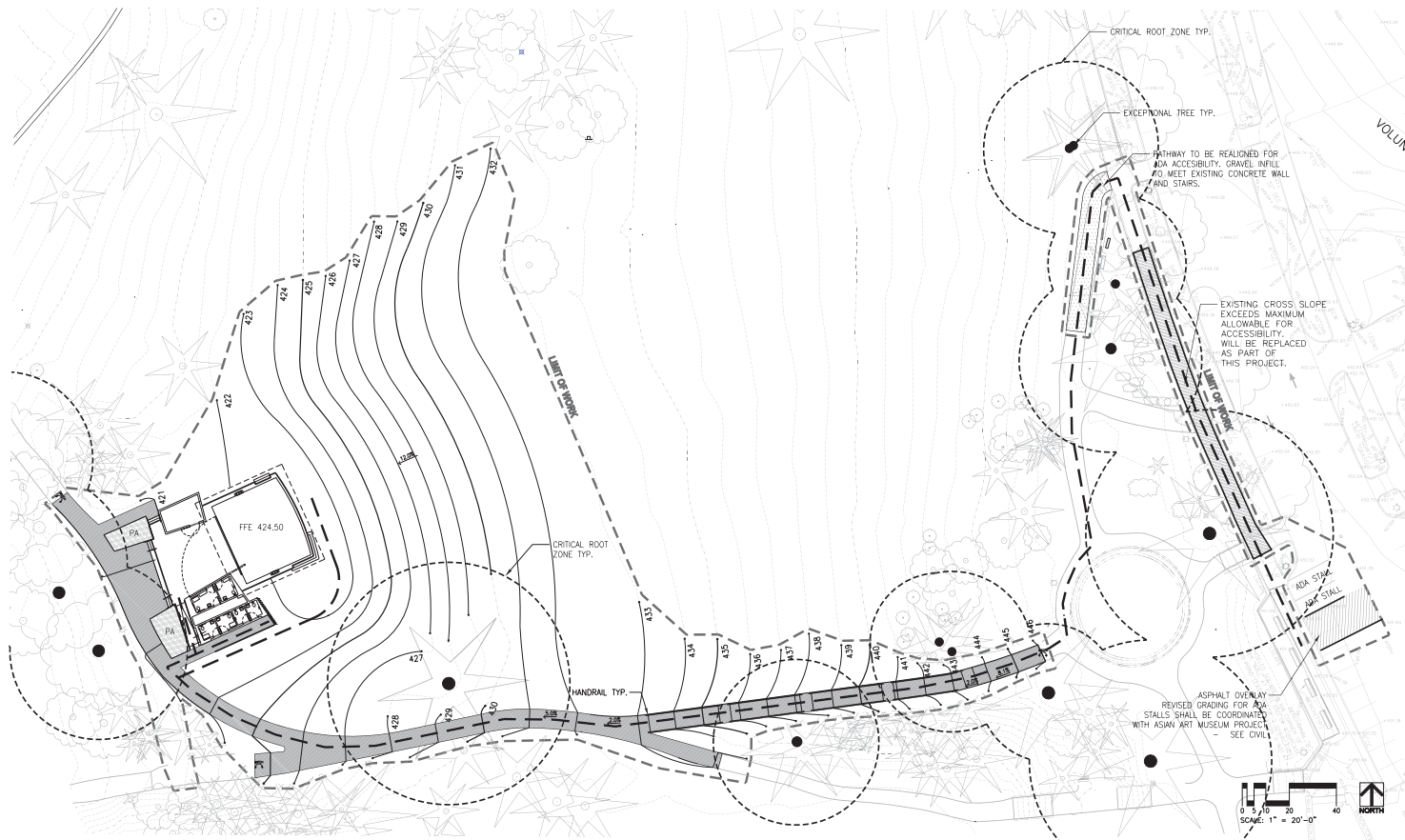




## SITE EXTENTS

- Replace Stage & Restrooms
- ADA Accessible Pathway
- ADA Parking Stalls at Drive
- Visual Openness
- Minimal Regrading at Lawn
- Protect Trees
- Enhanced Planting along Pathways

EXISTING SITE PLAN -SCOPE OF REGRADING/DEMO

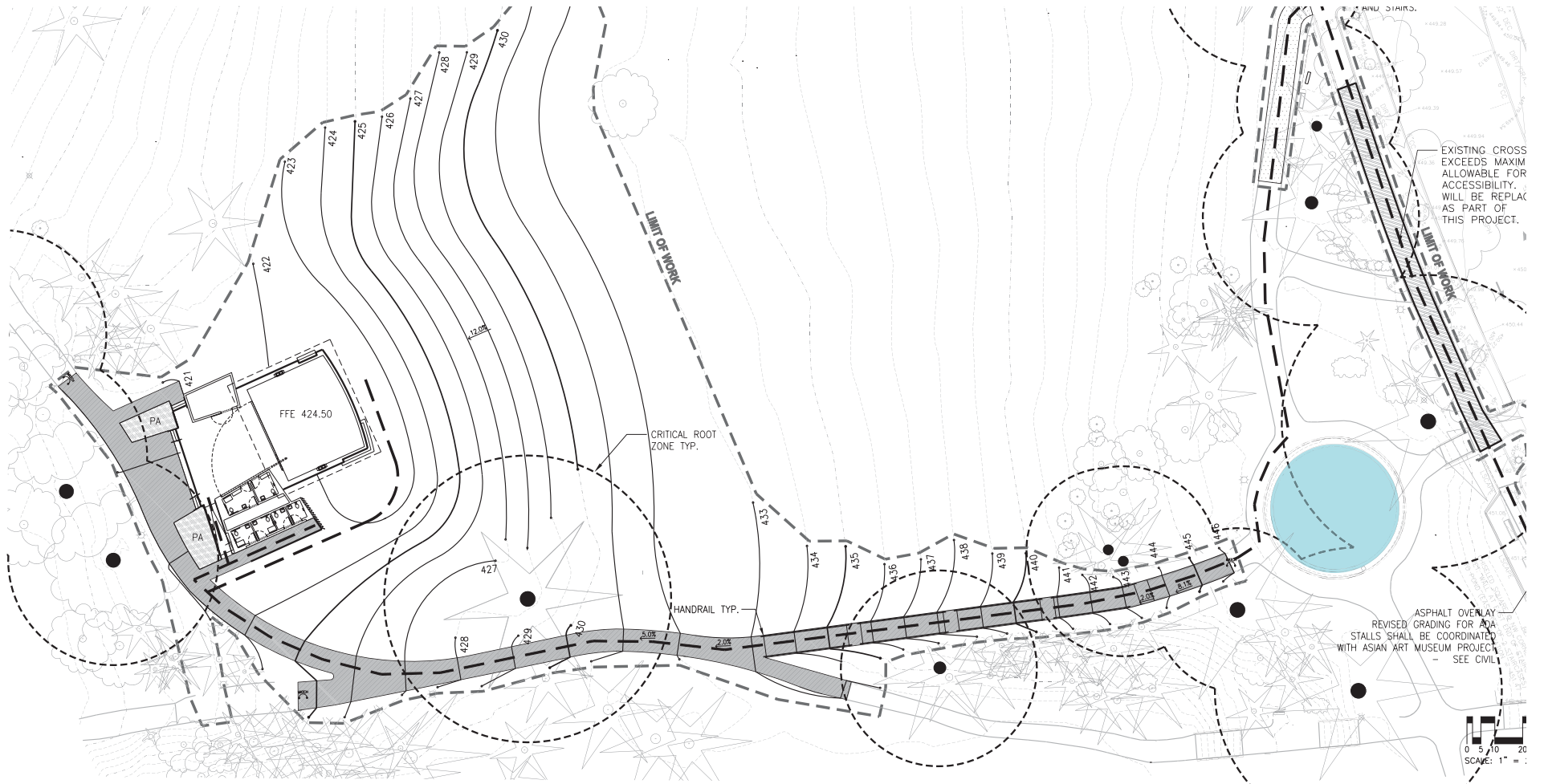


PROPOSED SITE PLAN

## SITE EXTENTS

- Replace Stage & Restrooms
- ADA Accessible Pathway
- ADA Parking Stalls at Drive
- Visual Openness
- Minimal Regrading at Lawn
- Protect Trees
- Enhanced Planting along Pathways





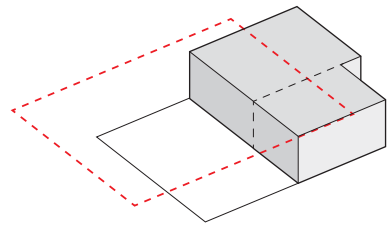
EXISTING CROSS EXCEEDS MAXIMUM ALLOWABLE FOR ACCESSIBILITY. WILL BE REPLACED AS PART OF THIS PROJECT.

ASPHALT OVERLAY REVISED GRADING FOR ADA STALLS SHALL BE COORDINATED WITH ASIAN ART MUSEUM PROJECT - SEE CIVIL

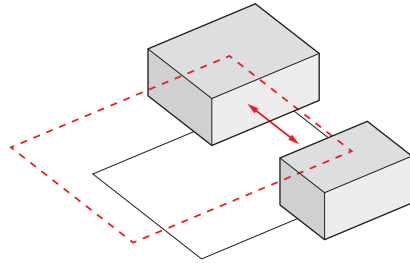




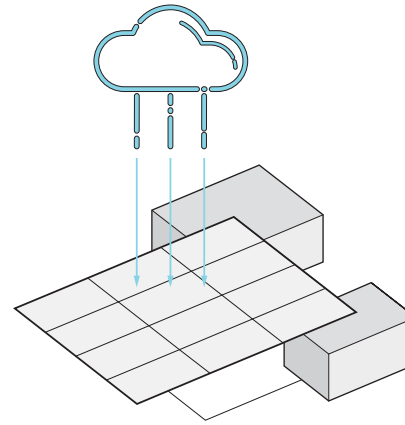
ROOF INSPIRATION



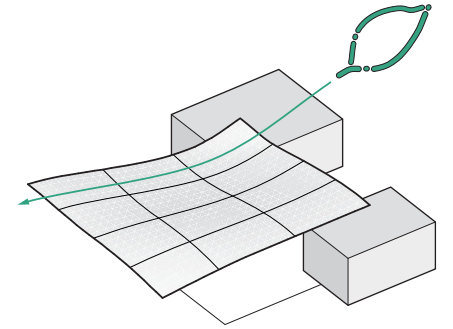
STAGE / SUPPORT / ROOF



OPEN / ALLOW FLOW



PROVIDE COVER



ORGANIC CURVE

FORM EVOLUTION

**DESIGN CONCEPTS**





PERFORMANCE / EVENING VIEW - minimal / flexible backdrop for diverse events





DAYTIME / NON-PERFORMANCE VIEW - engaging space for everyday park users





SECTION VIEW - continuity & openness from great lawn to forest



- Wood Soffit / Painted Steel Roof reference historic wood roofs without mimicry
- Corten wall panels ground support spaces within the landscape / avoid mimicry of formal masonry structures in park
- Stage Floor: Concrete with Resilient Surface - Richlite or Rubber Surface for durability / flexibility

## MATERIALALITY





SEATTLE ASIAN ART MUSEUM



CONSERVATORY



RESTROOMS NEAR CONSERVATORY

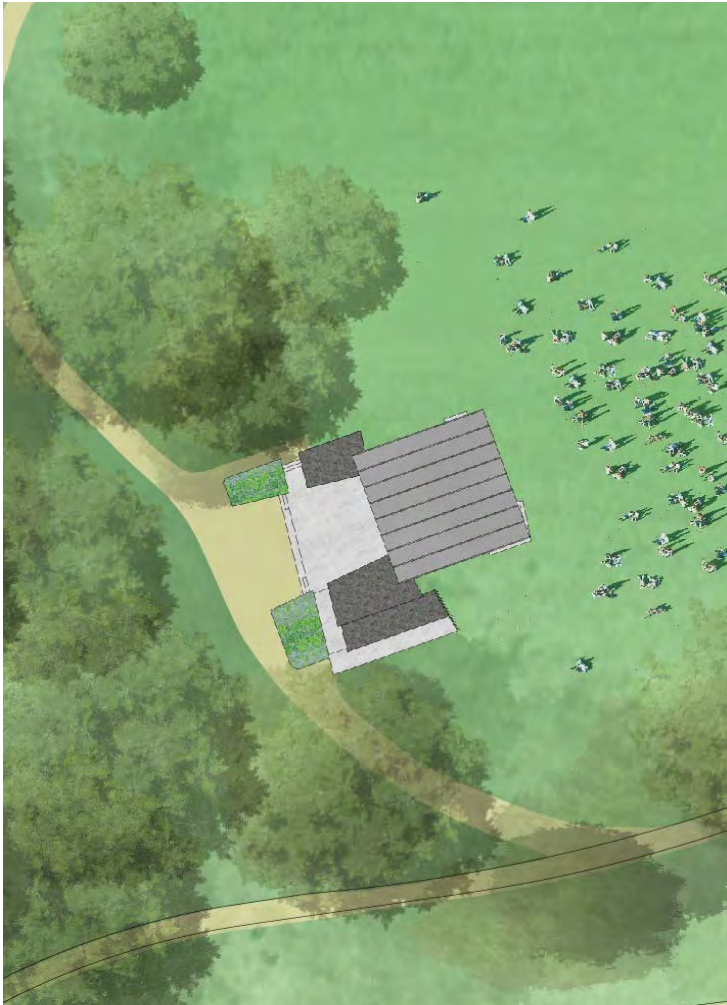


PUMP BUILDING

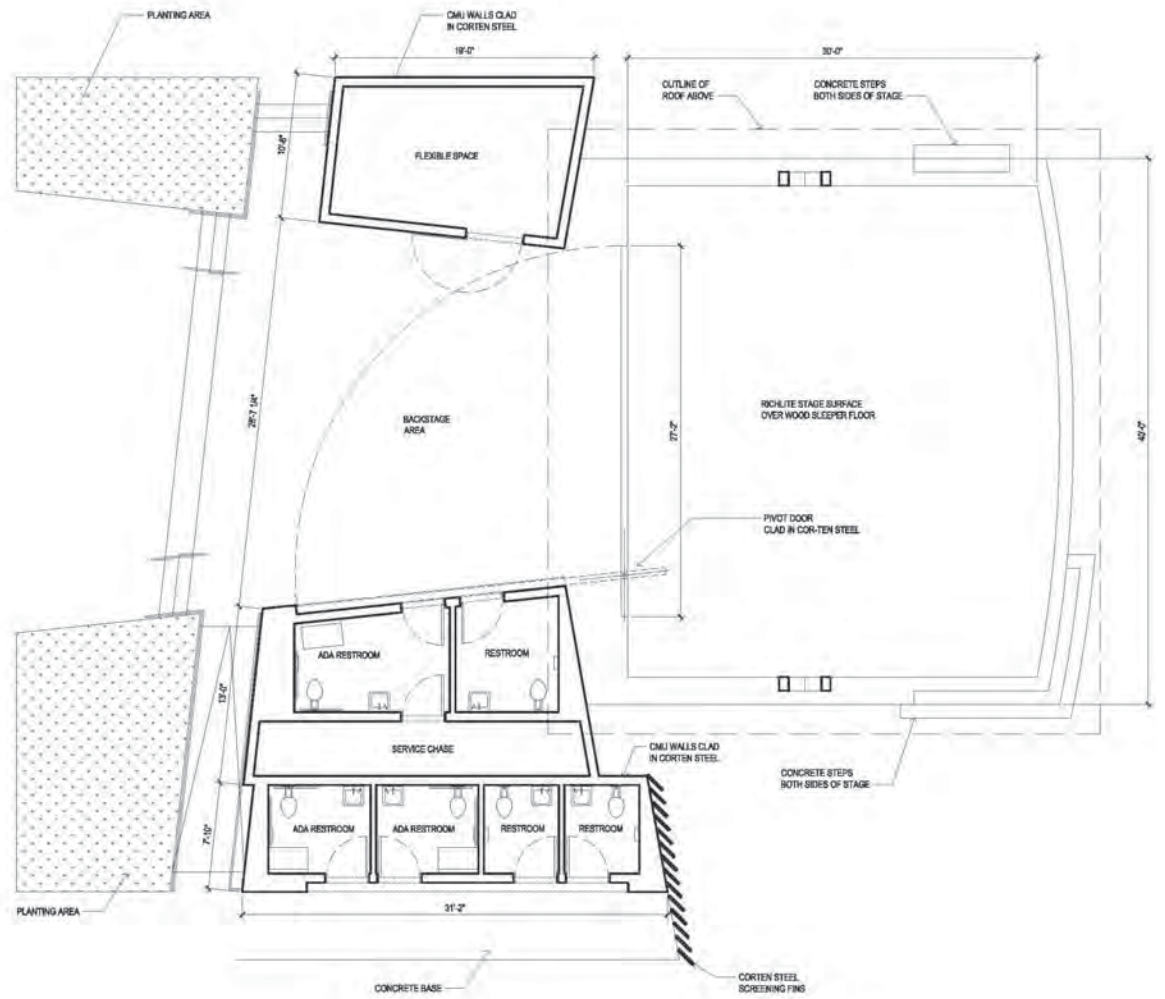


WATER TOWER

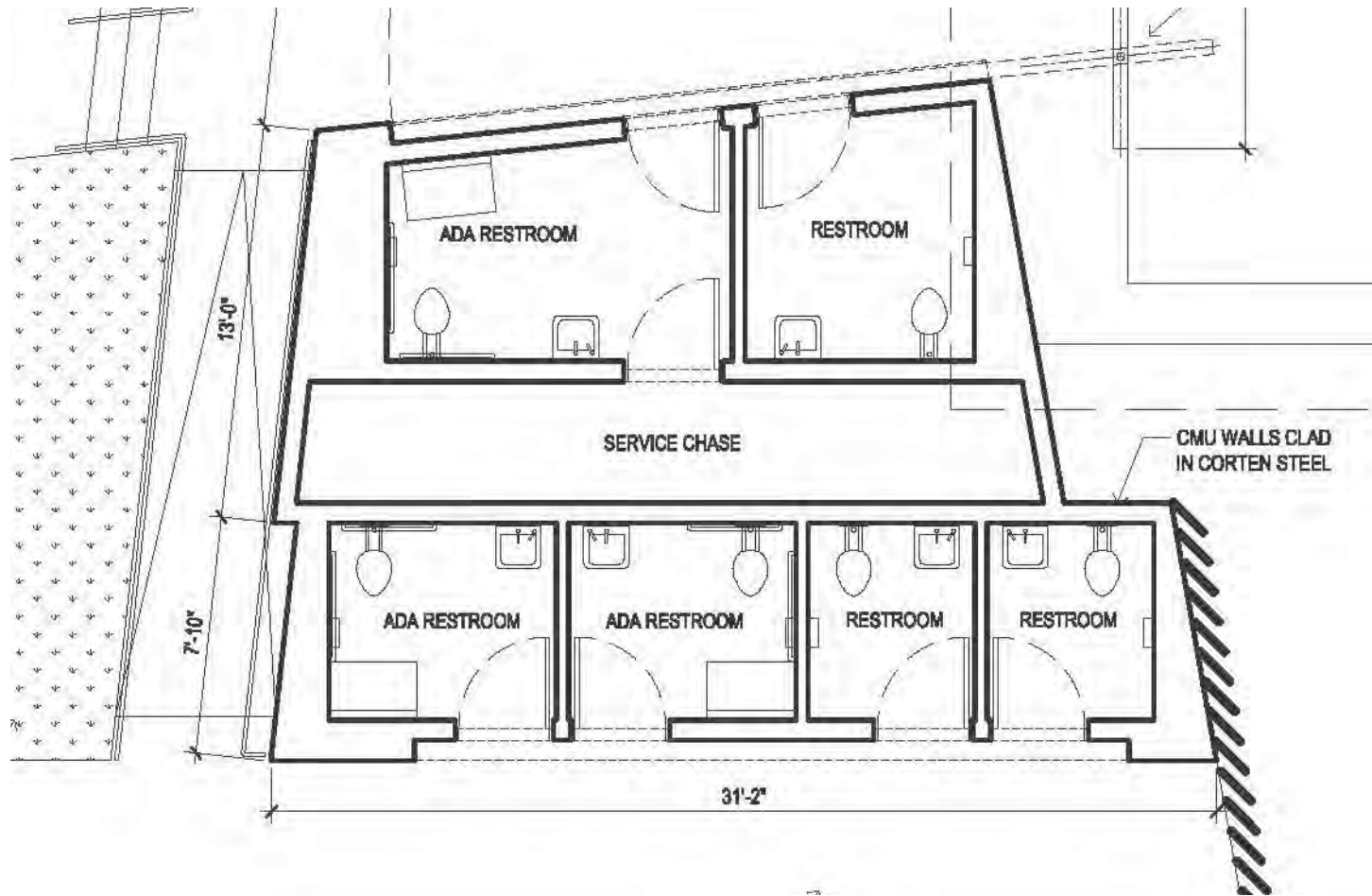
REFERENCE: HISTORIC VOLUNTEER PARK ARCHITECTURE



PLAN - STAGE







PLAN - RESTROOMS



**EVENTS MEASURED**

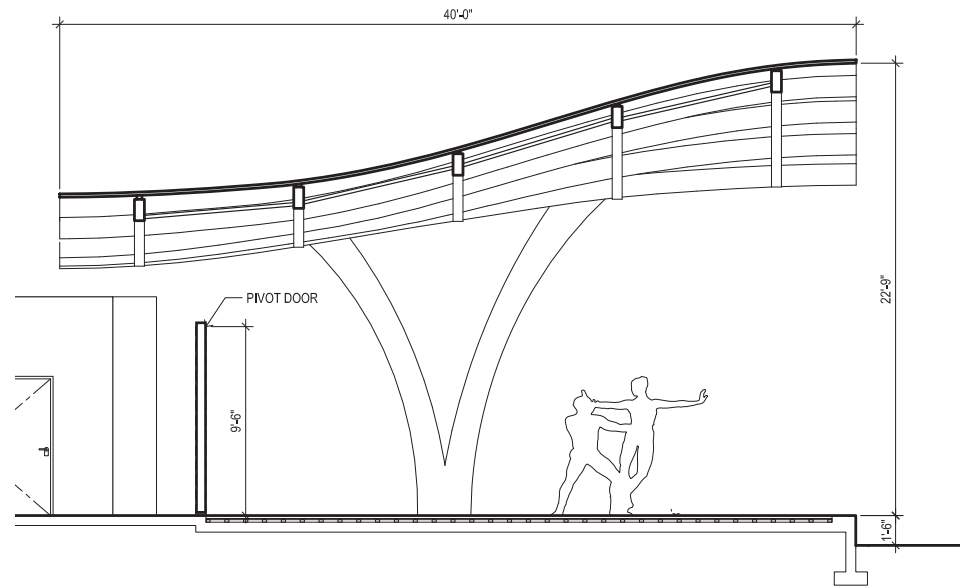
- Seattle Peace Concerts
- Seattle Chamber Music Society
- Vibrations Festival

**SOUND LEVELS OBSERVED**

- 75-90 dB within audience areas
- 50-55 dB at park edges
- 60-70 dB aircraft fly overs

SOUND MEASUREMENTS - 2016

**ACOUSTICS**



STAGE SECTION





PERFORMANCE / EVENING VIEW

# VOLUNTEER PARK AMPHITHEATER



## PROJECT TEAM:

**Volunteer Park Trust** . [info@volunteerparktrust.org](mailto:info@volunteerparktrust.org) . [www.volunteerparktrust.org](http://www.volunteerparktrust.org)

**ORA - Architects** . [orichards@orarchitects.com](mailto:orichards@orarchitects.com) . [www.orarchitects.com](http://www.orarchitects.com)

**Walker Macy - Landscape Architects** . [lrose@walkermacy.com](mailto:lrose@walkermacy.com) . [www.walkermacy.com](http://www.walkermacy.com)

**City Of Seattle Parks & Recreation** . [david.graves@seattle.gov](mailto:david.graves@seattle.gov) . [www.seattle.gov/parks](http://www.seattle.gov/parks)