



D VIEW TOWARDS PLAY AREA



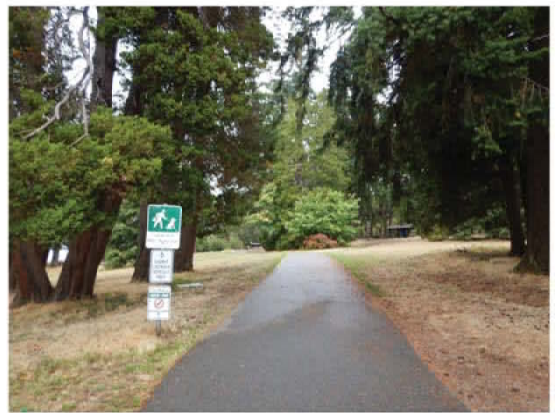
E VIEW TOWARDS PICNIC SHELTER #2



E WYVERN - RICH BEYERS SCULPTURE 1982



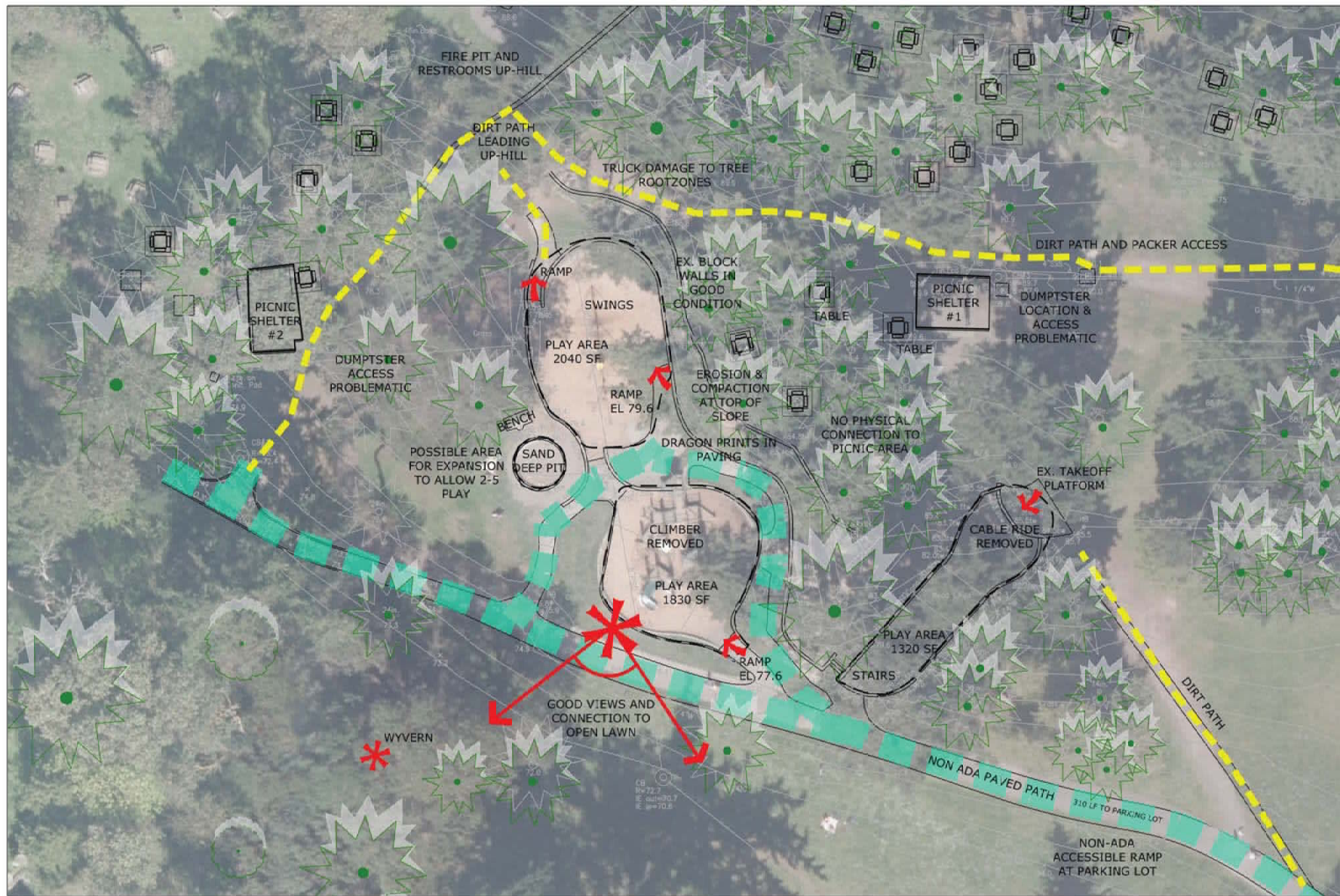
C VIEW FROM PLAY AREA LOOKING TOWARD PARKING LOT



B ENTRY PATH FROM PARKING TO PLAY AREA



A NON-ACCIBLE ROUTE INTO PARK



BACKGROUND

OLMSTED RECOMMENDED PARK - ACQUIRED 1922. REGIONAL PARK INCLUDES BEACH, SALTWATER POOL, BALL FIELDS, 3 PLAY AREAS, WADING POOL, PICNIC AREAS, TRAILS. ADA ACCESS LACKING THROUGHOUT PARK. NORTH PLAY AREA RENOVATED IN 2016. SOUTH PLAY AREA CONSTRUCTED IN 1998. RECENT COMPREHENSIVE TREE ASSESSMENT.

- PRIMARY USER GROUPS:
1. FAMILIES WITH CHILDREN
 2. PICNIC FACILITY USERS
 3. DAY CAMPS
 4. PARK USERS

OPPORTUNITIES

- + REGIONAL & NEIGHBORHOOD USE
- + PICNIC AREAS - MULTI-GENERAL TIONAL USE
- + NATURAL FOREST AND LOWER PARK BEACH OFFERS NATURE PLAY OPPORTUNITIES FOR KIDS.
- + VIEW OVER OPEN HILLSIDE TO THE WATER
- + WELL INTEGRATED INTO THE HILLSIDE WITH BLOCK WALLS IN GOOD SHAPE
- + TERRACES MAY OFFER OPPORTUNITY FOR HILL PLAY.
- + FOREST SETTING, GRADES, AND SCATTERED LOCATION ADDS TO SENSE OF ADVENTURE
- + EXISTING BEYER'S WYVERN SCULPTURE AND FOOT PRINTS OFFERS POTENTIAL PLAY EQUIPMENT CHARACTER.

CONSTRAINTS

- TRAILS TO THE PLAY AREA ARE NOT ACCESSIBLE.
- CHANGES IN GRADE MAKE ACCESS CHALLENGING
- LACK OF SEATING FOR CARE GIVERS.
- SLOPE ABOVE PLAY AREA ERODING DUE TO PICNIC-PLAY AREA INTERACTION
- ASPHALT PATH TO PARKING LOT & STREET NOT ACCESSIBLE.
- CABLE RIDE AREA GRADE CHANGES POSES ACCESS CONSTRAINTS.
- TREE ROOT ZONES LIMIT GRADE CHANGES.
- LACK OF PACKER ACCESS TO PICNIC AREAS ADDS TO TREE ROOT ZONE DETERIORATION
- TRASH CAN NEXT TO PICNIC AREAS ARE SMELLY
- NO UNDER-STORY PLANTS REMAINING



C PICNIC SHELTER #2



B SAND BOX



D PLAY AREA AT ENTRY



H PICNIC SHELTER #1



G EROSION ABOVE PLAY AREA



A WYVERN, OPEN LAWN & WATER VIEW



E AREA FOR ADVENTURE PLAY FEATURE



F PLAY AREA FROM ABOVE









Lincoln Park Playground



Our work is all play

Allplay Systems
www.allplaysystems.com
1.888.531.4881
info@allplaysystems.com

Lincoln Park Playground



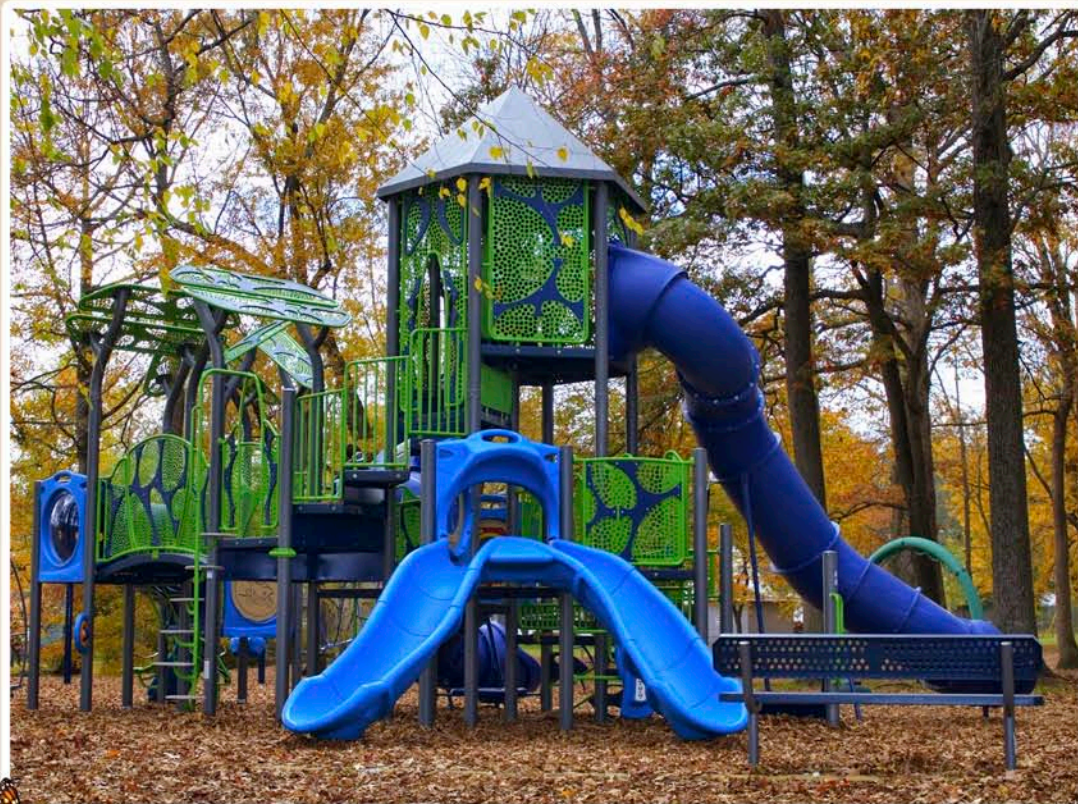
Our work is all play

Allplay Systems
www.allplaysystems.com
1.888.531.4881
info@allplaysystems.com

Presented By



A PLAYCORE Company



www.gametime.com

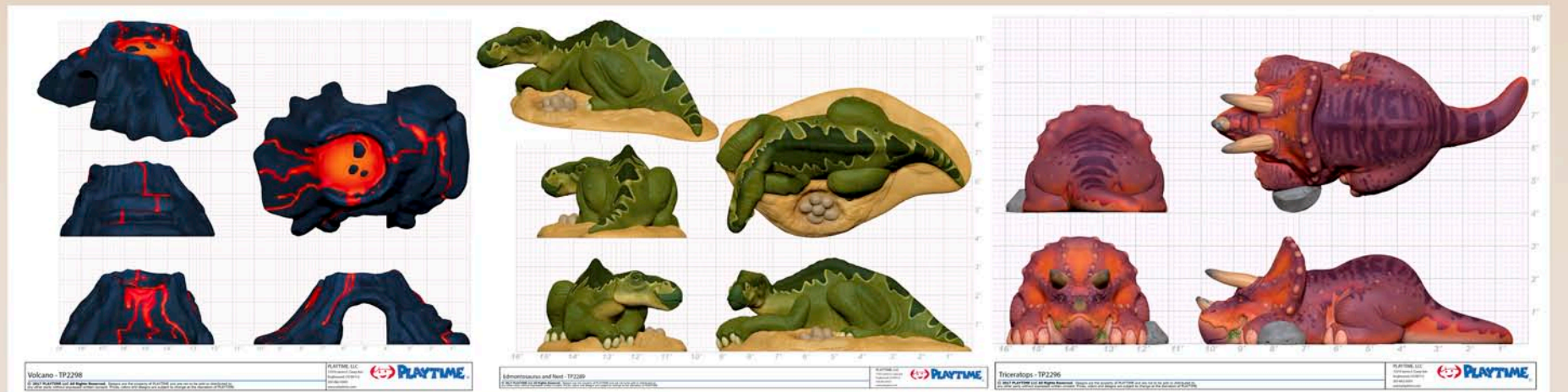
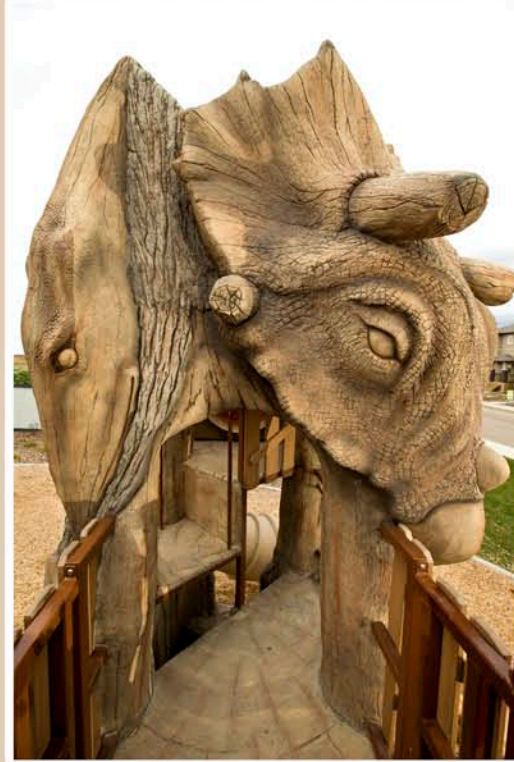
LINCOLN PARK - OPTIONS - VIEW A

800.235.2440
Representative: Gary Max

Presented By



A PLAYCORE Company



www.gametime.com

LINCOLN PARK - OPTIONS - VIEW B

800.235.2440
Representative: Gary Max

Presented By



A PLAYCORE Company



www.gametime.com

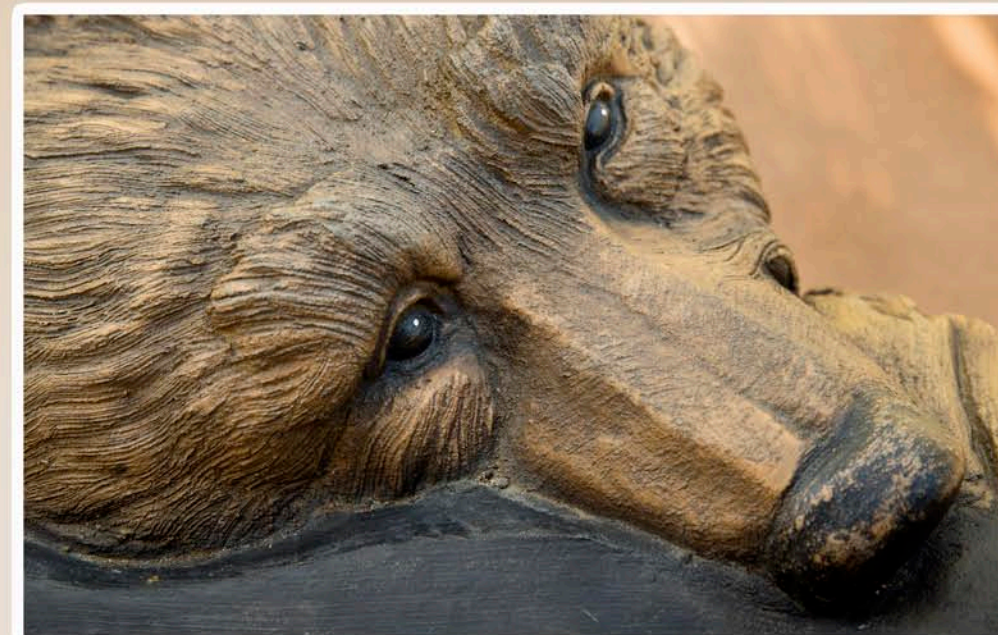
LINCOLN PARK - OPTIONS - VIEW C

800.235.2440
Representative: Gary Max

Presented By



A PLAYCORE Company



www.gametime.com

LINCOLN PARK - OPTIONS - VIEW D

800.235.2440
Representative: Gary Max