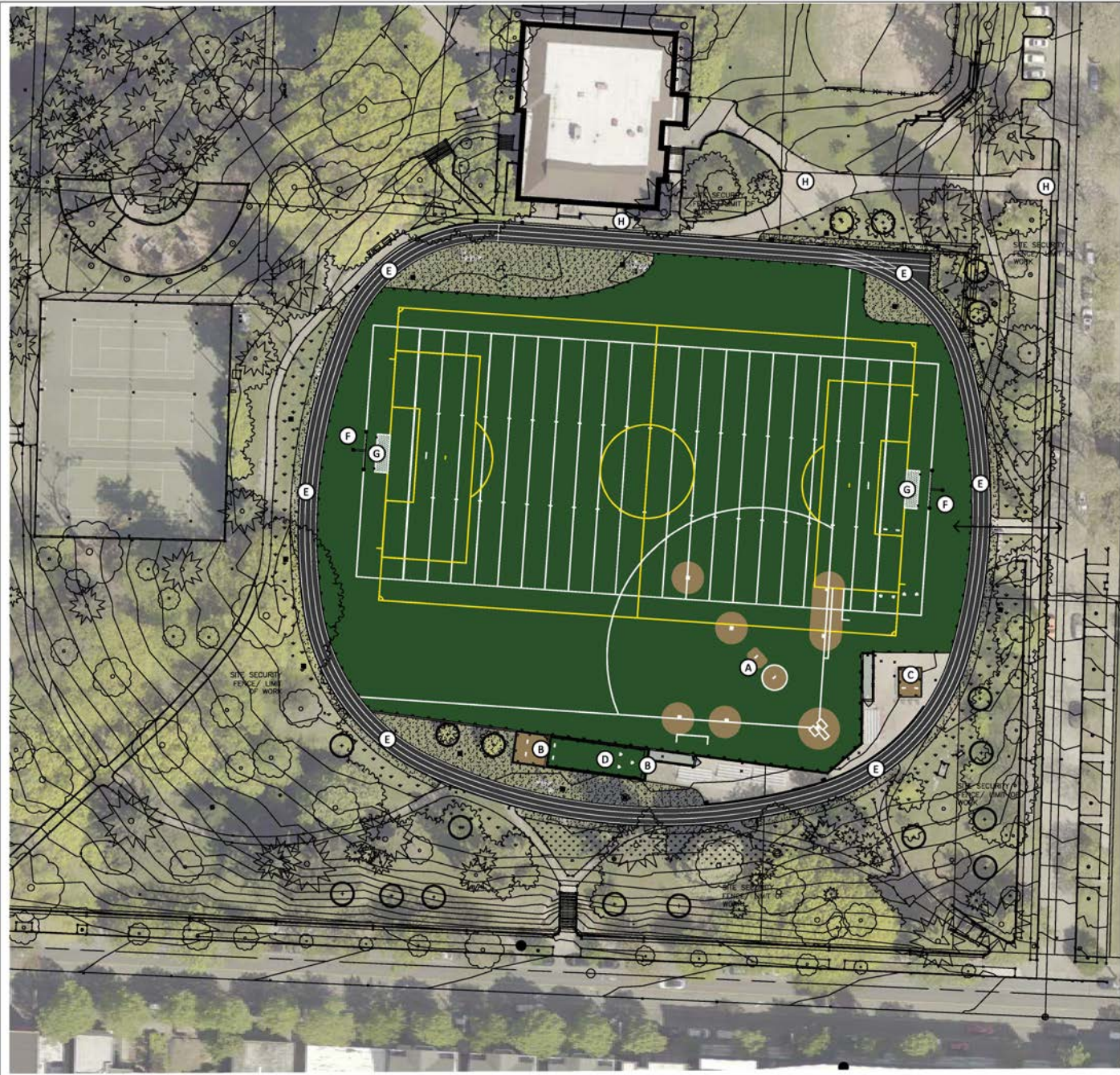


Revised: 04/25/2022 - 11:52 AM - R. Anderson  
 File: \\s:\data\Projects\125207\125207\_01\_Turf\_Replacement\Drawings\125207\_01\_Hiawatha\_PP\_Colorized\_Schedule\_Landscaping\_Landscaping\_Plan



- PROGRAM ELEMENTS**
- NEW SUPPLEMENTAL RESILIENT PAD
  - PRACTICE FOOTBALL
  - ADULT REC SOCCER
  - HIGH SCHOOL BASEBALL / 90' FASTPITCH/60'
  - REPLACE BASES / ANCHORS
  - REPLACE SOCCER GOAL ANCHORS
  - CLEAN FOOTBALL GOALS

- OPTIONS**
- TRACK REPAIR / RESURFACE
  - PORTABLE GAME MOUND
  - SYNTHETIC TURF BULLPEN MOUNDS

- FEATURES**
- (A) Portable Baseball Pitching Mound (Game)
  - (B) Bullpen Mound (Bankered, Synthetic Turf) and Plates
  - (C) Bullpen Mound (Bankered, Synthetic Turf) and Plates
  - (D) Batting Cage and Plate
  - (E) Rubberized Running Track
  - (F) Existing Football Goal (to be cleaned)
  - (G) New Soccer Goal
  - (H) Planned Accessible Improvements

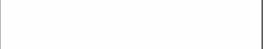
**>>>>CAUTION - CALL 811<<<<**  
**UTILITY NOTIFICATION CENTER**  
**BEFORE YOU DIG!**  
 WWW.CALL811.COM  
 Also, verify all underground utilities not located by the 811 service by using a commercial location service and call SPRI Inspection Request Line (206) 684-7034.

3		
2		
1		

NO.	REVISION	DATE
	AS BUILT	

REVIEWED: FARAH SHIBLINGER DATE: 04/27/2022

All work done in accordance with the City of Seattle Standard Plans and Specifications in effect on the date shown above, and supplemented by Special Provisions.



**Seattle Parks & Recreation**

**HIAWATHA PLAYFIELD**

**SYNTHETIC TURF REPLACEMENT**

**COLOR LAYOUT PLAN**

DESIGNED: <u>EJS</u>	DATE: <u>03-29-22</u>
DRAWN: <u>CFR</u>	SHEET: <u>3 OF 10</u>
CHECKED: <u>EJS</u>	

ORDINANCE NO. 126000, 126237, 126475 **F100**

SPECIFICATION NO.

SCALE: 1"=30'

