

GREEN LAKE SMALL CRAFT CENTER

PUBLIC MEETING #1

26 JUNE 2018

AGENDA

- **Welcome**
- **Analysis and Options**
- **Discussion**

PROJECT GOALS

- **More Programs** : Expand existing public programs & improve facilities
- **Functionality** : Improve access to the water
- **Better Access**: Reach underserved populations
- **Accessibility**: Access for all to the water & programs

GREEN LAKE PARK



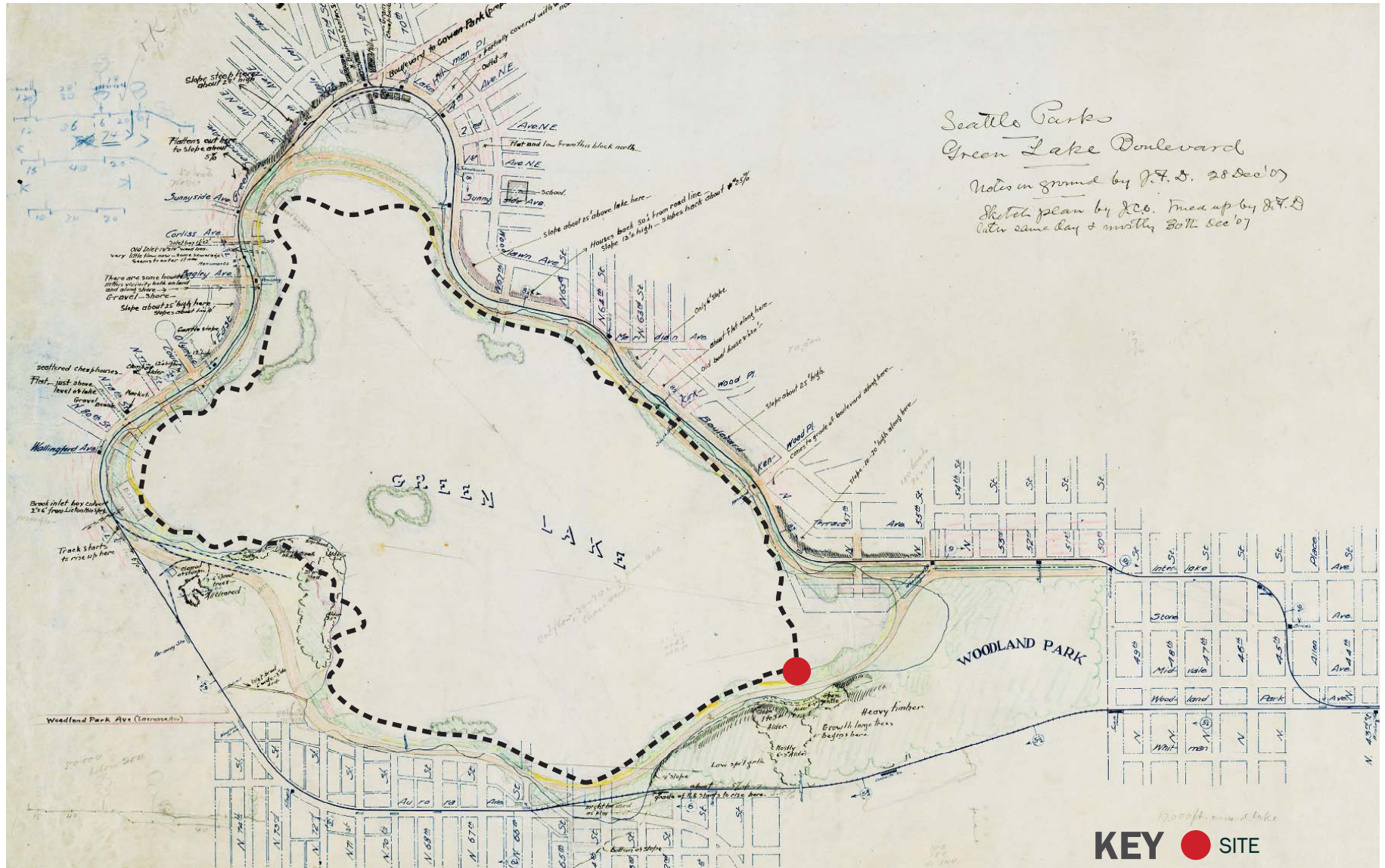
KEY

- | | | | | |
|----------------------|-----------------|---------------------|-------------------------|-------------------------|
| 1 GREEN LAKE PARK | 3 GOLF COURSE | 5 WOODLAND PARK ZOO | 7 GREEN LAKE WAY N | 9 WEST GREEN LAKE WAY N |
| 2 SMALL CRAFT CENTER | 4 WOODLAND PARK | 6 SPORTS FIELDS | 8 EAST GREEN LAKE WAY N | |

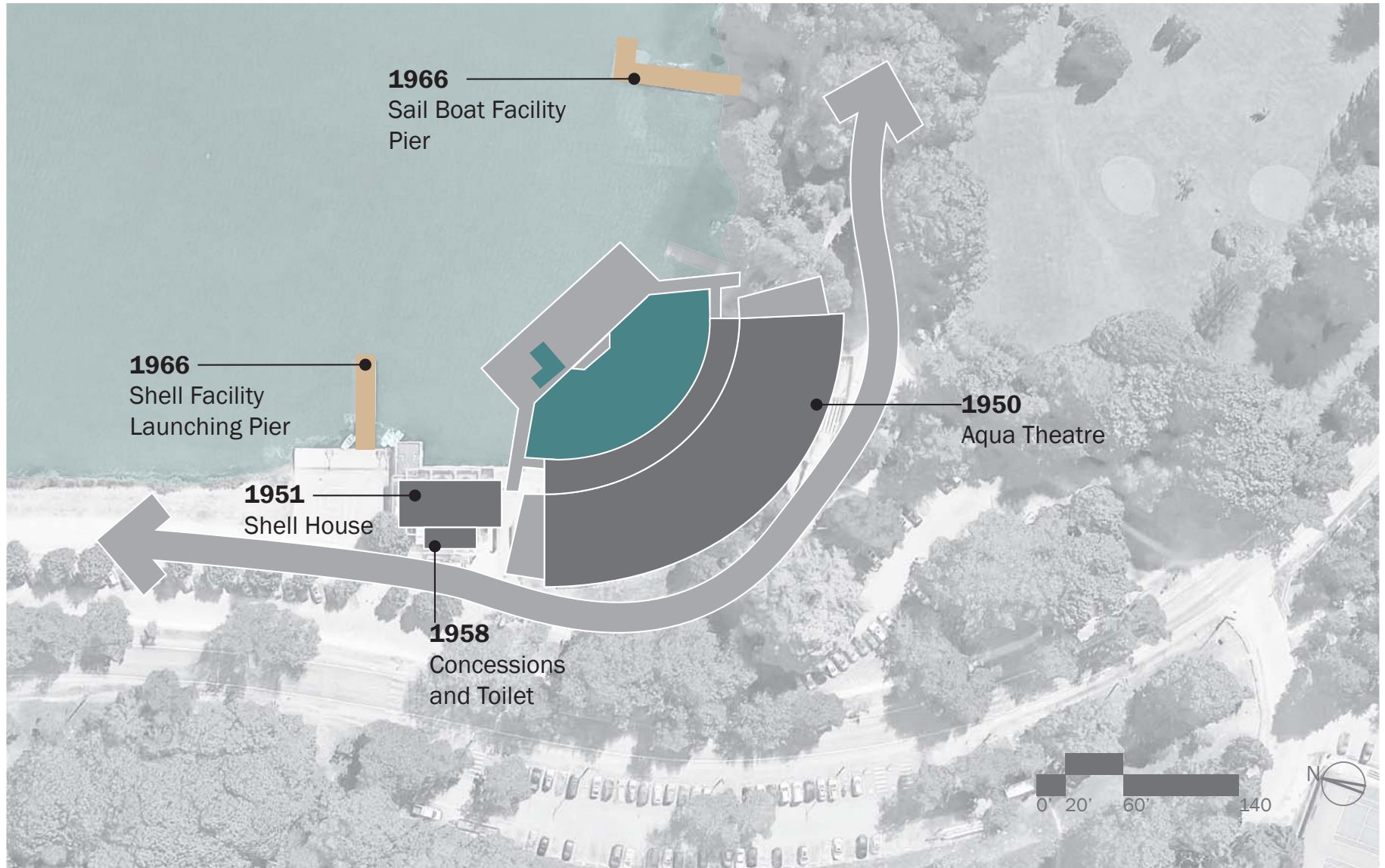
GREEN LAKE SMALL CRAFT CENTER



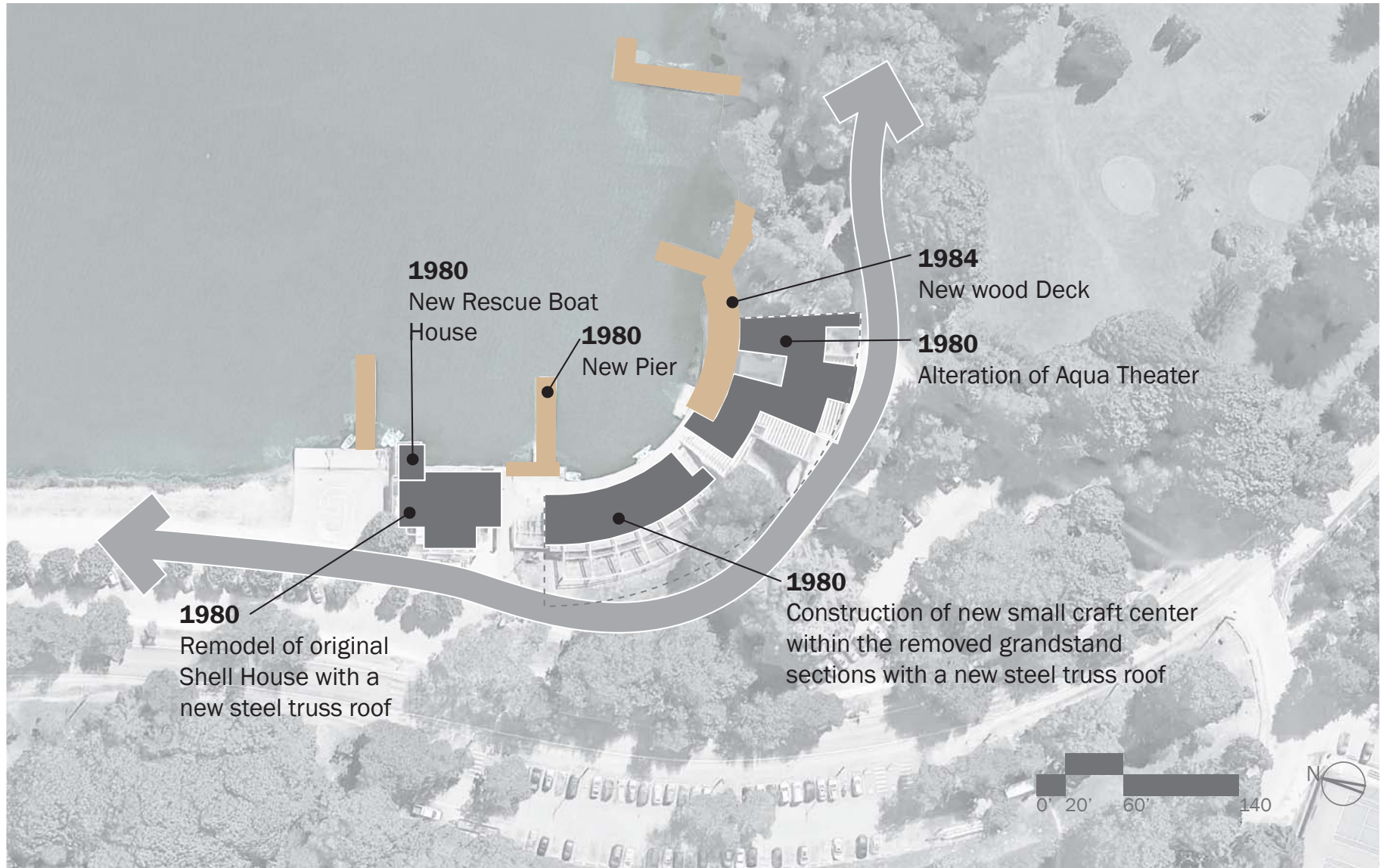
SITE DEVELOPMENT - 1904



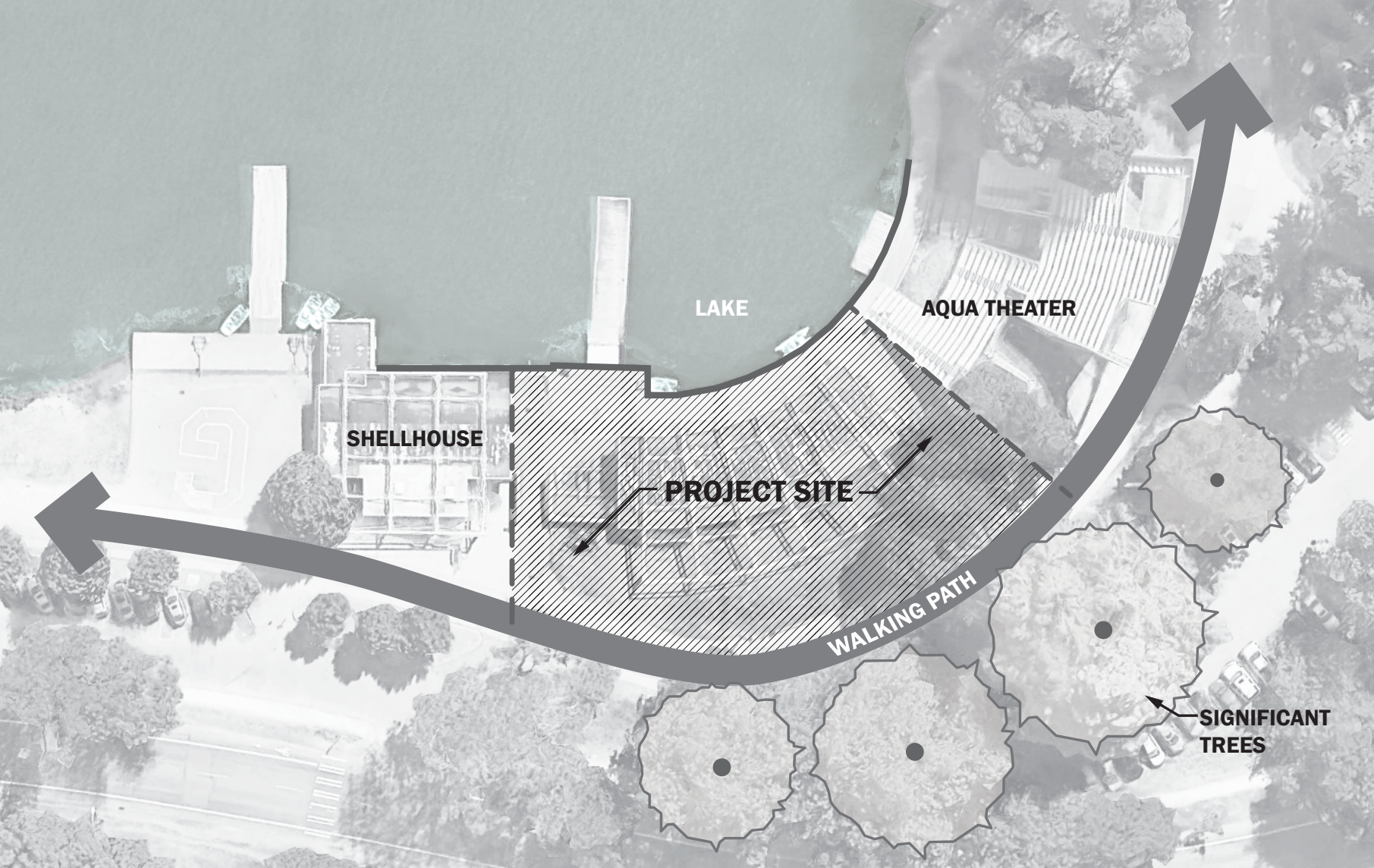
SITE DEVELOPMENT - 1950'S/1960'S



SITE DEVELOPMENT - 1980'S



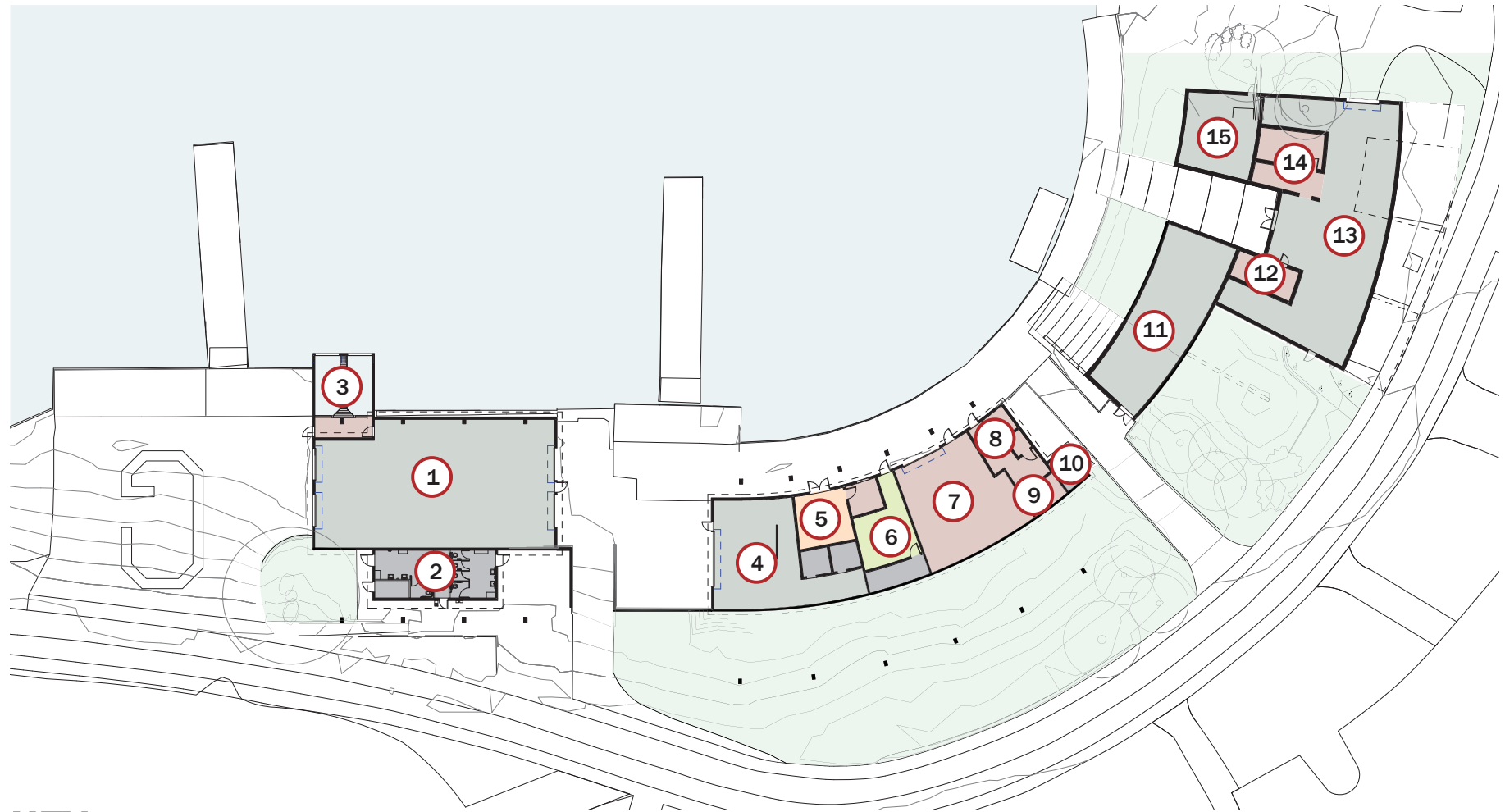
SITE CONSTRAINTS



EXISTING USES



EXISTING USES



KEY

- | | | | | |
|---------------------|-----------------|----------------------|------------------------|--------------------------|
| 1 SHELL HOUSE | 4 CANOE & KAYAK | 7 WORKOUT ROOM | 10 SEWER PUMP | 13 SHELL STORAGE |
| 2 RESTROOMS | 5 OFFICES | 8 CUBBIES/CHANGING | 11 ERG ROOM | 14 TRIP STORAGE ROOM |
| 3 RESCUE BOAT HOUSE | 6 MEETING ROOM | 9 TOILET/KITCHENETTE | 12 REPAIR/STORAGE ROOM | 15 CANOE & KAYAK STORAGE |

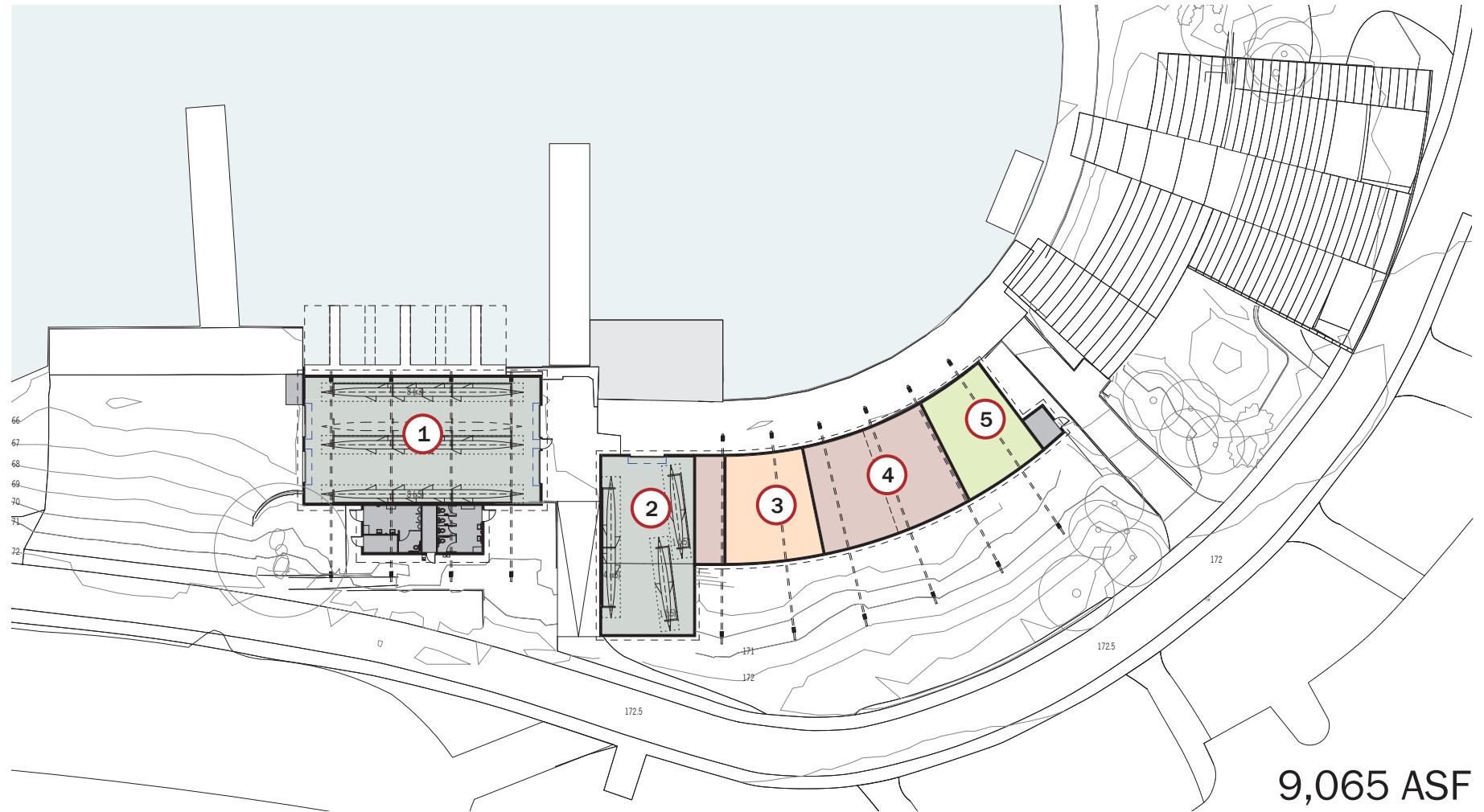
SPACE ALLOCATION TABLE

Program Area	Existing	Proposed Program (from Needs Analysis)
Multipurpose Room & Support	0	2,450
Parks Office	760	1,070
Boat Program Support	2,530	4,550
Boat Storage	6,995	8,500
Shared Support Spaces	465	1,100
Aqua Theater (unassigned)	Incl. above	0
Total (ASF)	*10,750	**17,760

* 6,605 sf in existing Boathouse and Shellhouse

** Mt Baker Rowing and Sailing Center = 17,147 sf

OPTION A - LEVEL 1

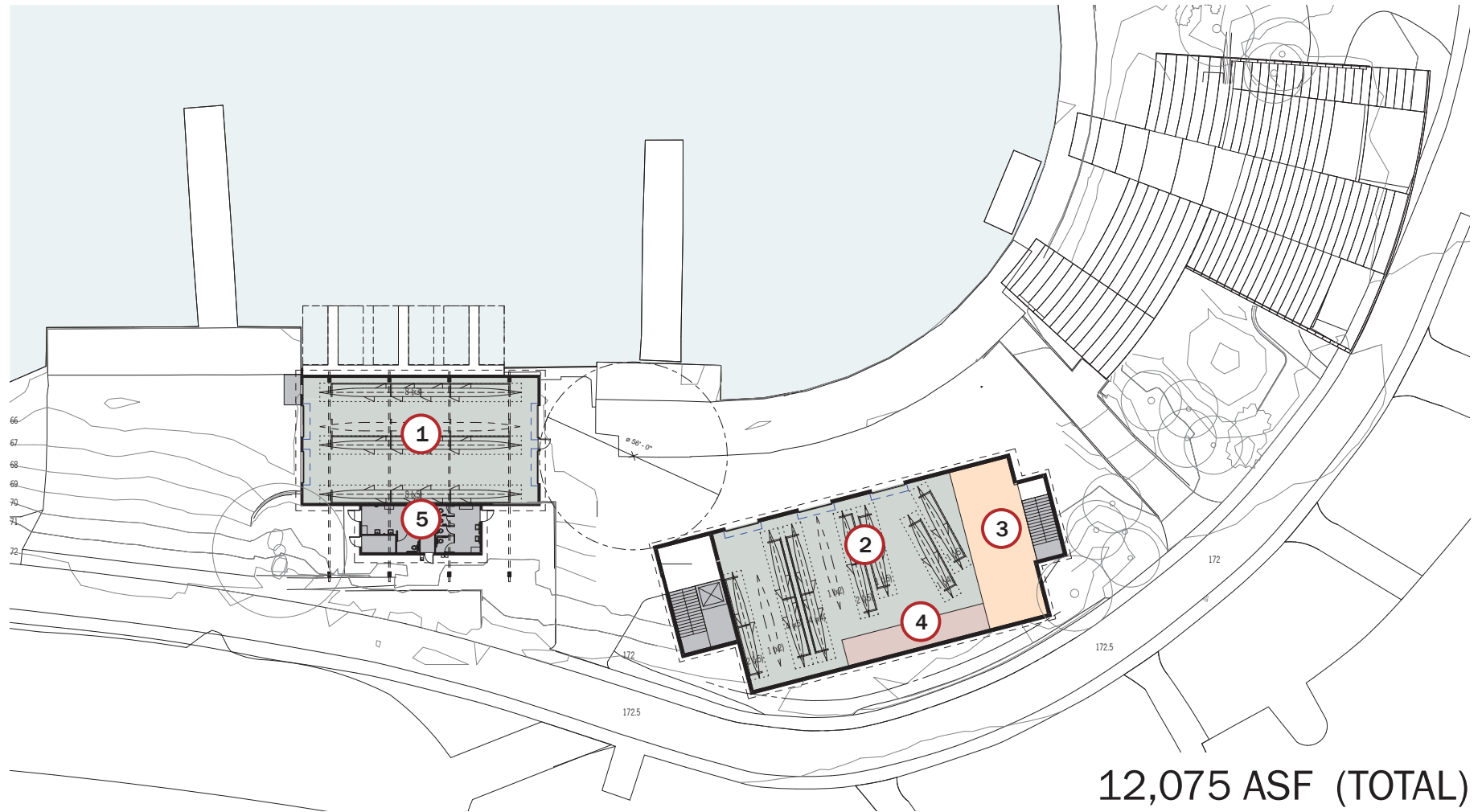


9,065 ASF

KEY

- 1 SHELL STORAGE
- 2 SHELL STORAGE - NEW
- 3 PARKS OFFICE
- 4 BOAT PROGRAM
- 5 MULTIPURPOSE

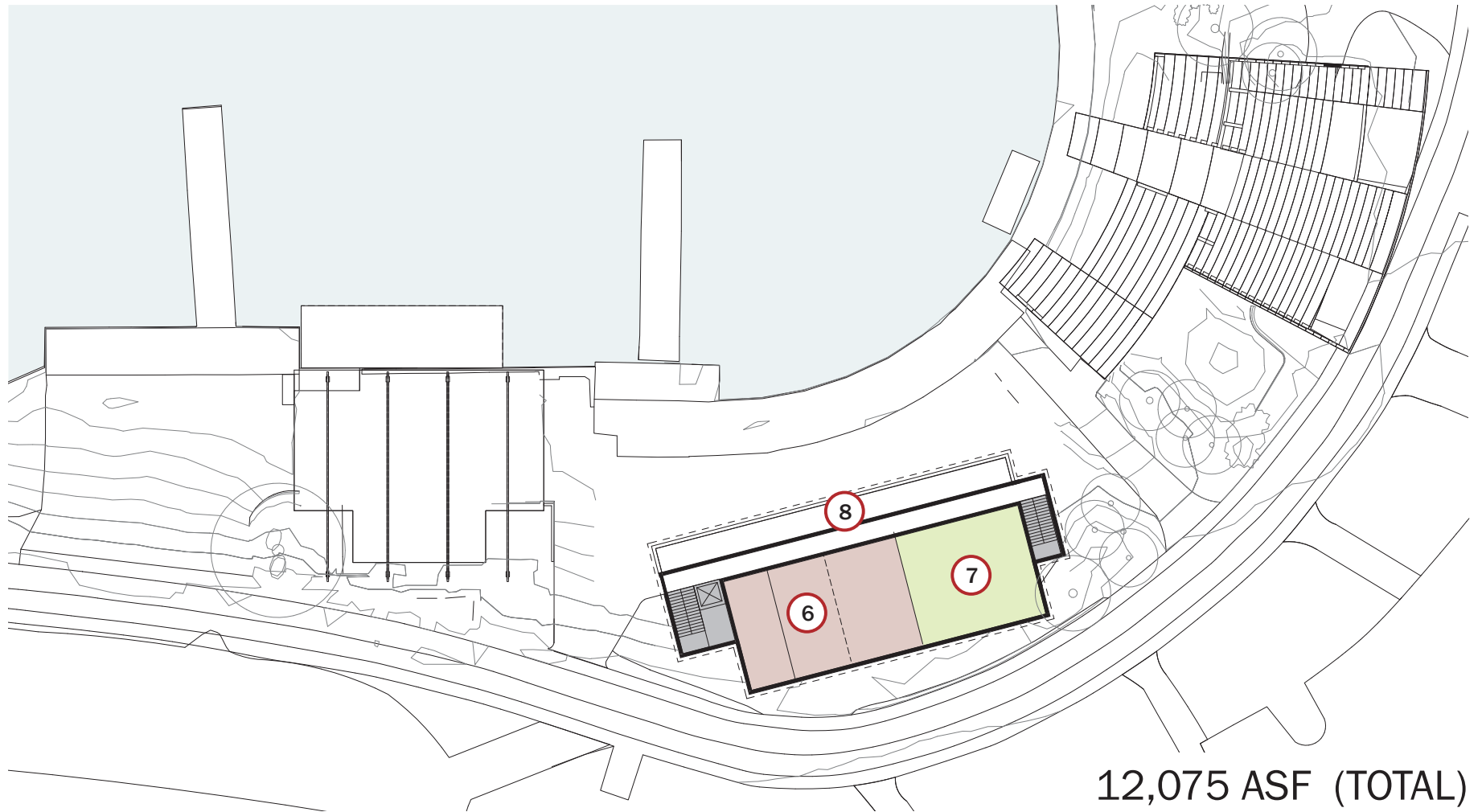
OPTION B - LEVEL 1



KEY

- 1 SHELL STORAGE
- 2 SHELL STORAGE - NEW
- 3 PARKS OFFICE
- 4 BOAT PROGRAM
- 5 PUBLIC RESTROOM

OPTION B - LEVEL 2



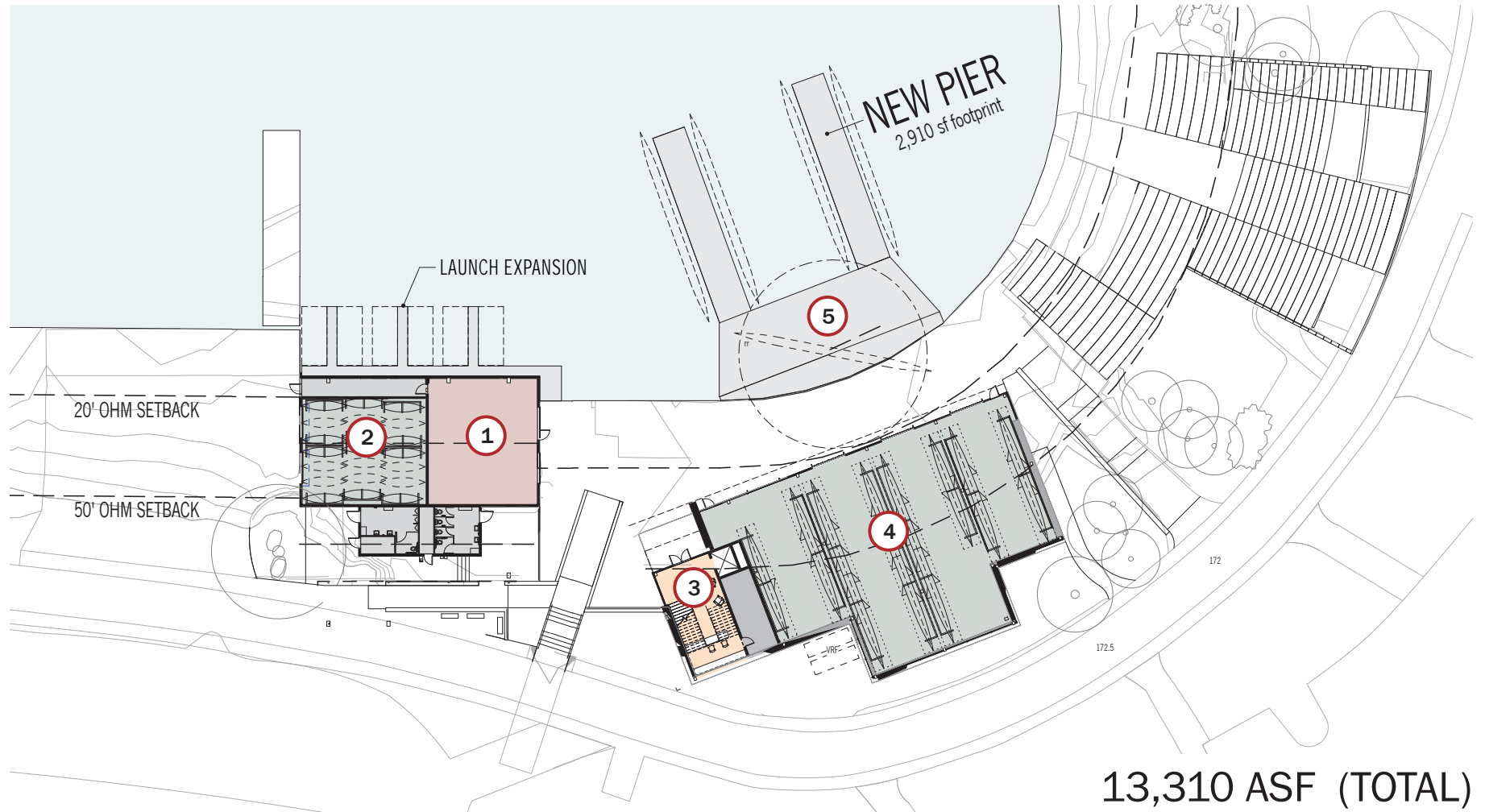
KEY

6 BOAT PROGRAM

7 MULTIPURPOSE ROOM

8 EXTERIOR DECK

OPTION C - LEVEL 1



KEY

1 WORKOUT/ERG

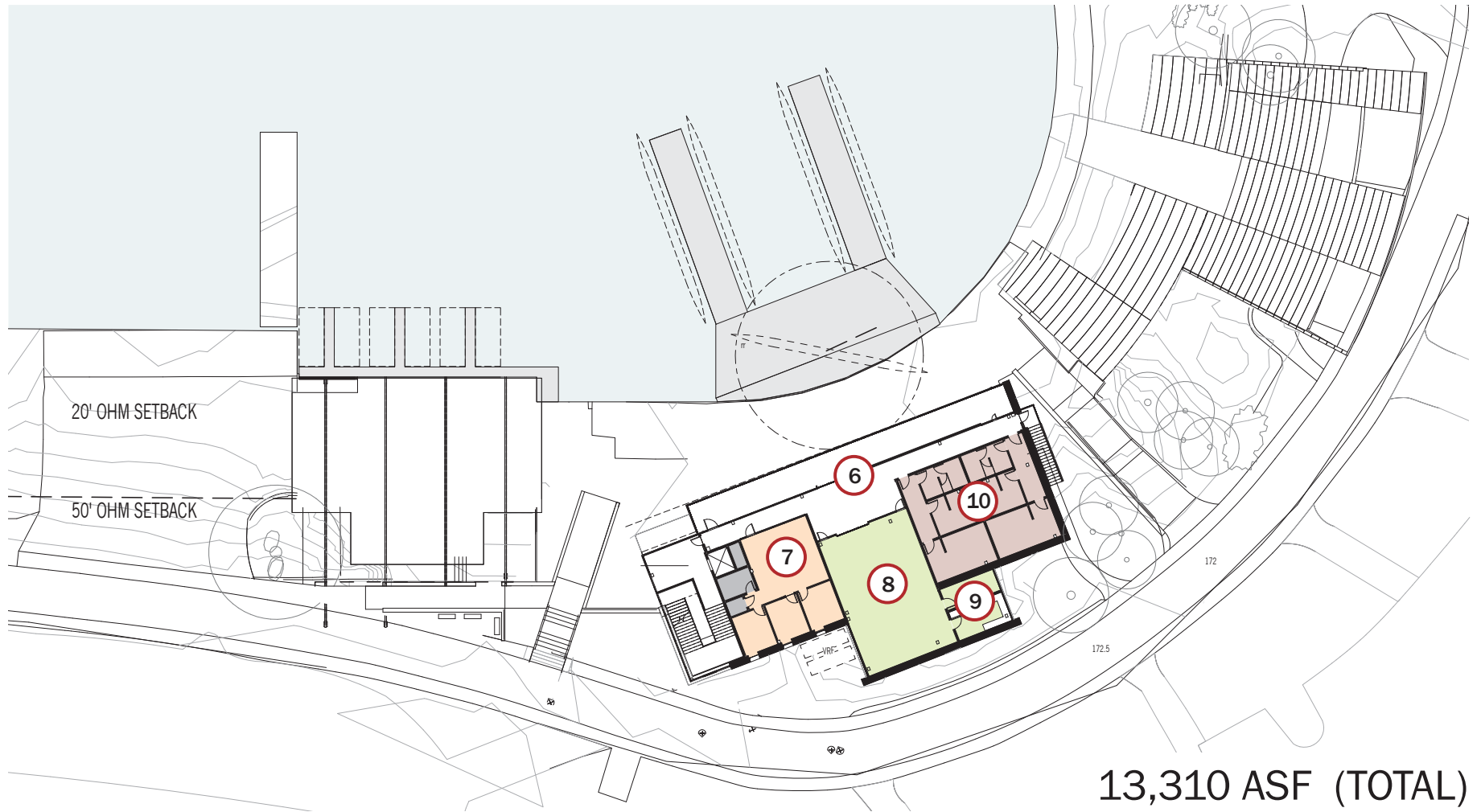
2 CANOE/KAYAK

3 LOBBY/COUNTER

4 SHELL STORAGE - NEW

5 PIER

OPTION C - LEVEL 2



KEY

- 6 EXTERIOR DECK
- 7 PARKS OFFICE
- 8 MULTIPURPOSE ROOM
- 9 KITCHEN
- 10 BOAT PROGRAM

OPTIONS COMPARISON

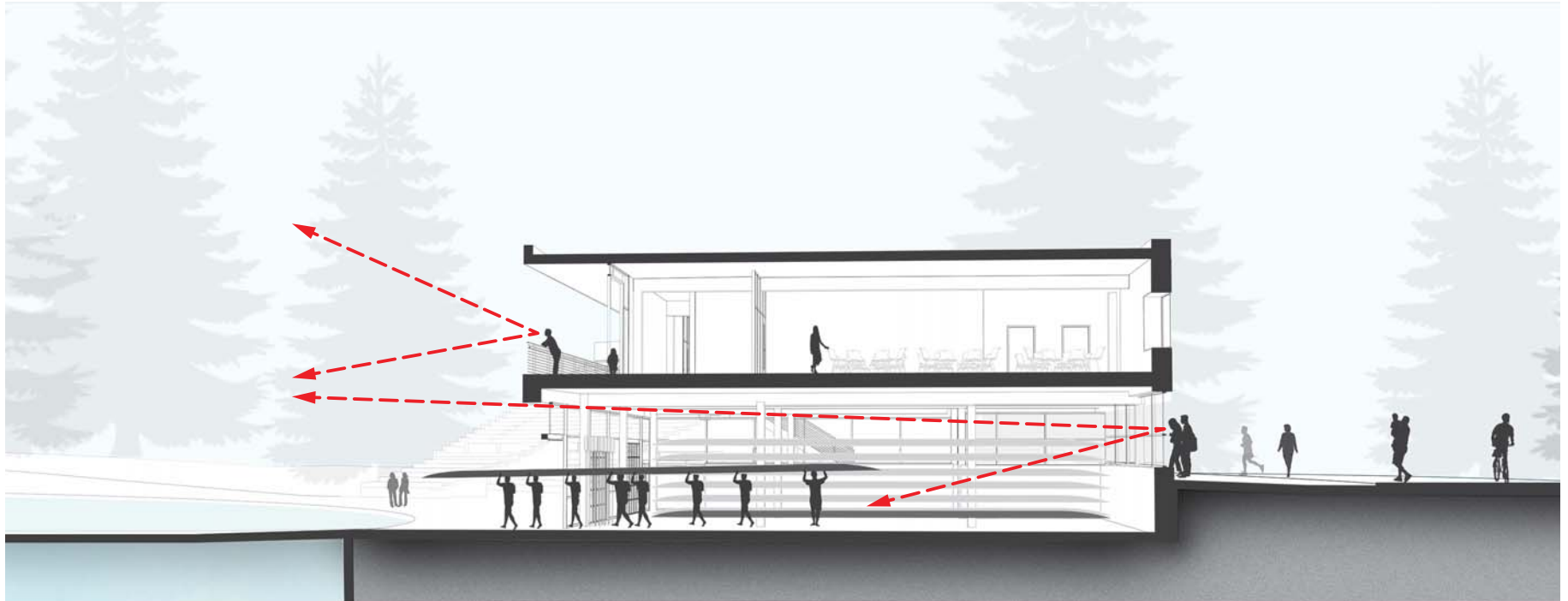
Program Area	Proposed Program	Option A	Option B	Option C
Multipurpose Room & Support	2,450	740	1,260	1,480
Parks Office	1,070	820	880	930
Boat Program Support	4,550	1,590	2,110	2,590
Boat Storage	8,500	5,420	7,130	6,970
Shared Support Spaces	1,100	495	695	1,340
Aqua Theater (unassigned)	0	0	0	0
Total (ASF)	17,760	9,065	12,075	13,310
		-49%	-32%	-25%

* 6,605 sf in existing Boathouse and Shellhouse

EXISTING VIEW FROM PATH



CONCEPT SECTION



**We are interested in your thoughts, comments,
and questions**

PROJECT WEBSITE

- <https://www.seattle.gov/parks/about-us/current-projects/green-lake-small-craft-center-redevelopment>

 **Seattle.gov**
Mayor Jenny A. Durkan

[Search](#) [Menu](#)

Seattle Parks and Recreation

Christopher Williams, Interim Superintendent

[Home](#) / ... / [Current Projects](#) / Green Lake Small Craft Center Redevelopment

[Find](#) [Reserve](#) [Volunteer](#) [About Us](#)

Contact Us

Park History

Work for Us

Seattle Park District

Seattle Park District
Open Budget

Board of Park
Commissioners

Rules & Regulations

Green Lake Small Craft Center Redevelopment

Updated: June 14, 2018

Summer 2018

Seattle Parks and Recreation is kicking off the design process for potential future improvements to the Green Lake Small Craft Center. Come meet the design team (Schacht | Aslani Architects), learn about the site opportunities and constraints and offer your input on what a new small craft center might look like at Green Lake. Please join us!

David Graves

Phone: (206) 684-7048

Email: David.Graves@seattle.gov

Address: [Mailing](#)