



Clean Cities Community Clean Teams Weekly Report

February 24, 2022

Reporting Week February 14 through February 20

Week in Review

This week the community clean team focused on the various litter and trash pick-up locations citywide. The following summary includes Clean Cities work accomplished by Parks and SDOT Clean Cities Crews.

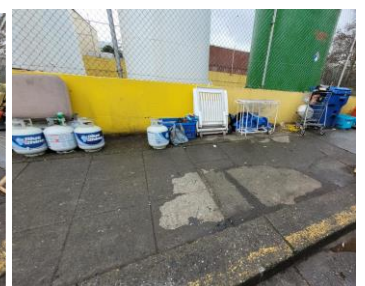
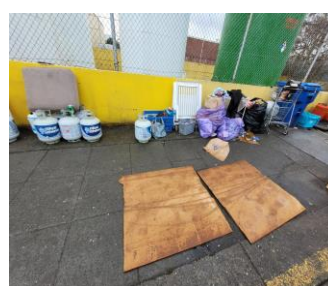
By the Numbers:

- Trash mitigation completed at 41 locations by Parks crews, and 7 additional locations by SDOT crews
- 2,776 needles collected by Parks Crews
- 76,610lbs. trash collected via Community Clean Teams, SPR-75,000 lbs.; SDOT-1,610 lbs.
- 9 blocks of litter pickup by SDOT crews
- 256 tents counted onsite

Clean Cities Routes Site Cleaning Examples By 4 Quadrants

NW Community Clean Team

- **NW 53rd St and 15th Ave to 14th Ave:** 6-Tents, 7-Structures, 40-Needles, 3,500lbs of debris -2/14



- Gilman Park: 2-Tents, 10-Needles, no tonnage provided -2/14
- **Woodland Park-Shelter #2:** 10-Needles, 2,480lbs of debris -2/14

Before



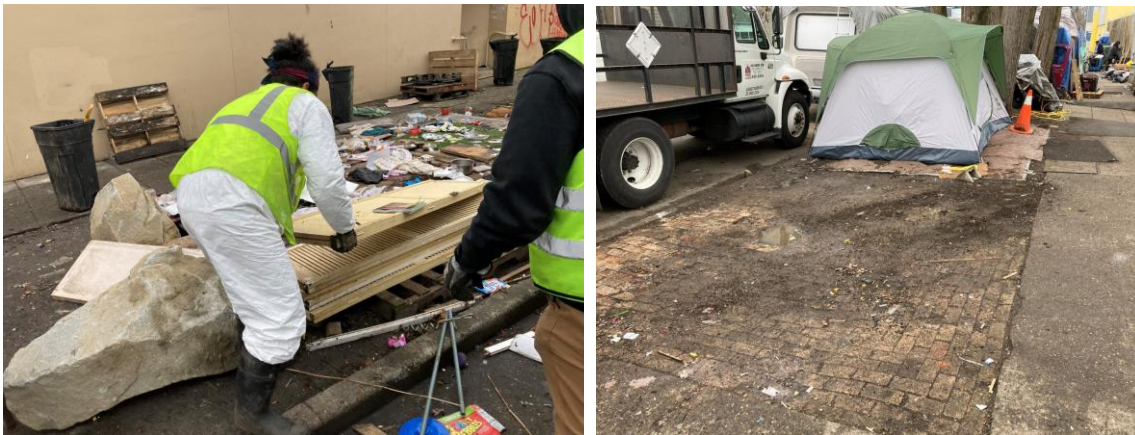
- 1400 W Elliot Ave: No-Tents, 20-Needles, 5,000lbs of debris -2/14
- 3601 W Marginal Pl SW: 2 blocks of litter pickup, 630lbs of debris -2/15, 2/18
- Gasworks Park: 5-Tents, 4-Needles, 100lbs of debris -2/15
- 4th Ave NE & NE 145th: No-Tents, 200lbs of debris -2/15
- Meridian to Northlake: 2-Tents, 21-RV's, 33-Needles, 300lbs of debris -2/15
- Kinneer Place: 3-Tents, 5-Needles, 480lbs of debris -2/15
- Kinneer Park: 5-Tents, 10-Needles, 1,000lbs of debris -2/15
- **NW 53rd and 15th Ave NW**: 4-Tents, 3-Structuers, 300-Needles, 3,000lbs of debris -2/15

Before



Action

After



- NW Leary way to 9th Ave NW: 11-Tents, 13-Needles, 400lbs of debris -2/15
- Puetz Golf: 4-Tents, 15-Needles, 20-Needles, 1,100lbs of debris -2/16
- South Lake Union: 3-Tents, 12-Needles, 25lbs of debris -2/16
- **Woodland Park**: 40-plus Tents, 10-Structures, 8-RV's, 300-Needles, 10,200lbs of debris -2/18, 2/20

2/18 - Before

Action

After



2/20 - Before



After



NE Community Clean Team

- Cowen Park: 1-Tent, 100lbs of debris -2/14
- Ravenna Park: 1-Tent, 12-Needles, 400lbs of debris -2/14
- Ravenna Woods: 1-Tent, no debris collected -2/14
- **NE 45th On Ramp**: No-Tents, 700-Needles, 2,800lbs of debris -2/14, 2/15

Before



Action



After



- NE 45th Off Ramp: 5-Tents, 1-Structure, 36-Needles, 1,340lbs of debris -2/14
- University Playfield: 7-Tents, 30-Needles, 2,000lbs of debris -2/14
- **Virgil Flaim**: 1-Tent, 7-RV's, 22-Needles, 1,880lbs of debris -2/15

Before



After

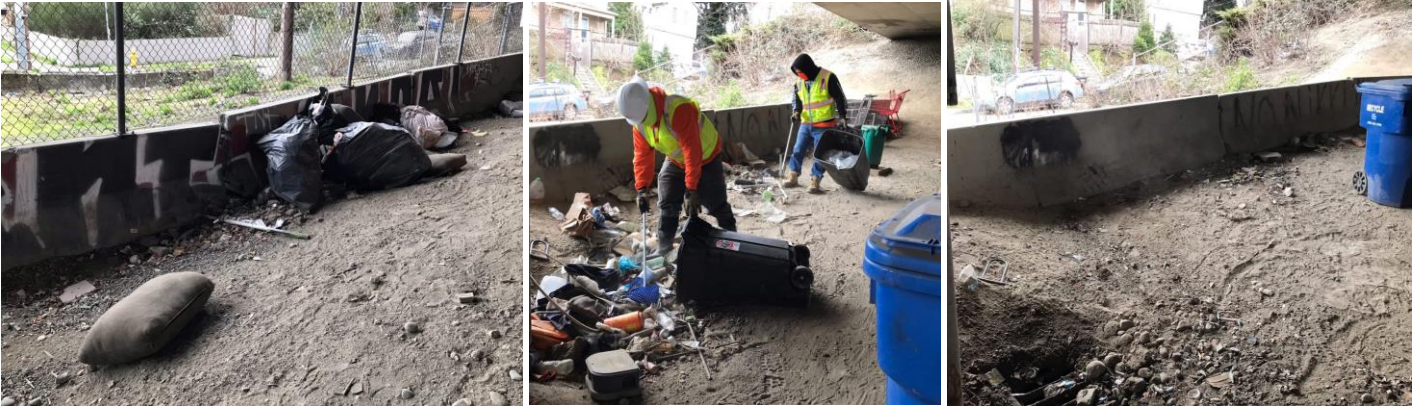


- Victory Creek: No-Tents, 6-Needles, 20lbs of debris -2/15
- Albert Davis: No-Tents, 14-Needles, 150lbs of debris -2/15
- 5th Ave NE & NE 145th: 7-Tents, 24-Needles, 300lbs of debris -2/15
- 12056 Hiram Pl NE: No-Tents, 2-Needles, 240lbs of debris -2/16
- Magnuson Park: 4-Tents, 400lbs of debris -2/16
- **42nd Ave and Pasadena**: 15-Tents, 1-Structure, 100-Needles, 1,200lbs of debris -2/17

Before

Action

After



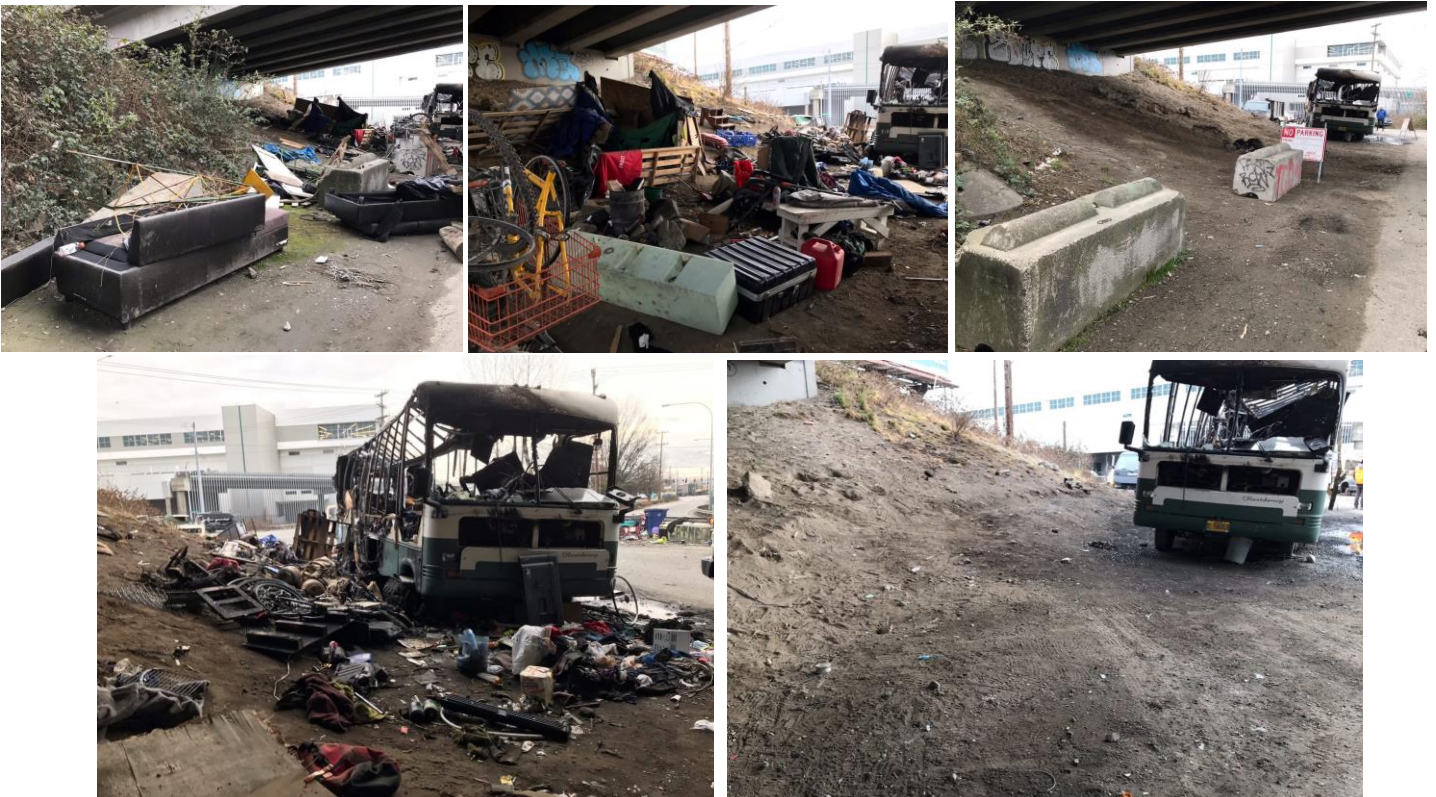
- Broadway Hill Park: 3-Tents, 10-Needles, 325lbs of debris -2/17

SW Community Clean Team

- Spokane & Airport Way: 2 blocks of litter pickup, 560lbs of debris -2/16
- **1st Ave S and S Front**: No-Tents, 4-RV's, 500-Needles, 14,620lbs of debris -2/17

Before

After



Before



After



- S Front St between 2nd Ave S & E Marginal Way S: TCP Setup -2/17

SE Community Clean Team

- 1300 Hubbell Pl: 1 block of litter pickup, 100lbs of debris -2/15
- 1030 7th Ave S: 1 block of litter pickup, 100lbs of debris -2/15
- Hubbell Place: No-tents, no tonnage provided -2/16
- 5th Ave between Dearborn & Yesler Ave: 2 blocks of litter pickup, 150lbs of debris -2/16
- 10th & Dearborn: 10-Tents, 5-Structures, 38-Needles, 1,050lbs of debris -2/16
- 4th Ave S between Terrace St & Yesler way: 1 block of litter pickup, 70lbs of debris -2/16
- Jefferson Park: 10-Tents, 12-Structures, 122-Needles, 2,000lbs of debris -2/17
- 3rd Ave and James St: 1-Tent, 5-Needles, 500lbs of debris -2/17
- Judge Charles M. Stokes Overlook: 6-Tents, 1-Structure, 44-Needles, 600lbs of debris -2/17
- Utah Ave S from S Atlantic to S Stacy. St: 8-Tents, 4-Structures, 39-Needles, 400lbs of debris -2/18
- 8th Ave S and S Holgate St: No-Tents, 12-RV's, 17-Needles, 600lbs of debris -2/18
- **Alaskan Way S from Atlantic St to Jack Perry Memorial Access RD: 10-Tents, 2-Structures, 33-Needles, 500lbs of debris -2/18**

Before



After



- **4th and Royal Brougham:** 3-Tents, 3-Structures, 62-Needles, 1,300lbs of debris -2/18

Before



Action

After



- **4th and Royal Brougham (Stairs):** 22-Tents, 5-Structures, 122-Needles, 3,000lbs of debris -2/18
- **4th Ave from Columbia and Cherry:** 15-Tents, 28-Needles, 700lbs of debris -2/18

Before



Action



After

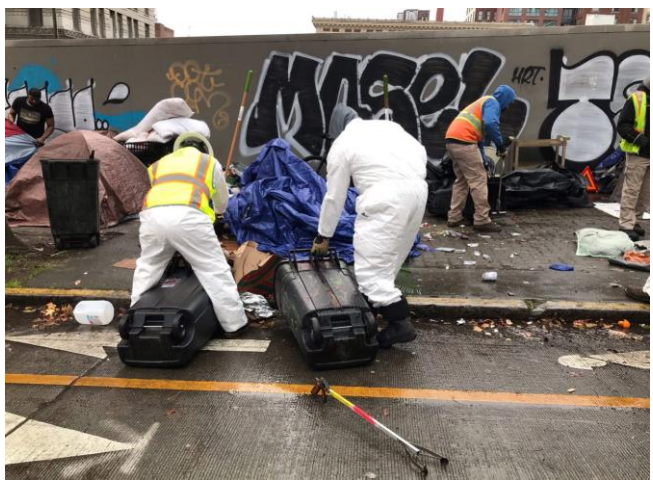


- 4th and James: 30-Tents, 11-Needles, 1,920lbs of debris -2/20

Before



Action



After



Look Ahead Week of February 21 to February 27

Emphasis Cleans:

NW: Mary Ave NW from NW 85th St to NW 83rd St

NW: Summit Slope Park

NE: *NE 50th St Northbound I-5 On Ramp Vicinity*

NE: N bound I-5 @ 70th St.

SW: Gateway Park North

SE: S Lane St to S Dearborn St from 12th Ave S to 10th Ave S

SE: 4th and Yesler Way Vicinity

The Crews will be doing litter picks, trash mitigation; any Bio- Hazard removal that may be required, and related grounds maintenance work. Crews will also be providing maintenance and cleaning efforts both in and around these parks. Field inspections and cleaning of right of way areas will include stairways, multi-use paths, streets, and sidewalks in the immediate vicinity of these parks.