



Clean Cities Community Clean Teams Weekly Report

January 27, 2022

Reporting Week January 17 through January 23

Week in Review

This week the community clean team focused on the various litter and trash pick-up locations citywide. The following summary includes Clean Cities work accomplished by Parks and SDOT Clean Cities Crews.

By the Numbers:

- Trash mitigation completed at 30 locations by Parks crews, and 16 additional locations by SDOT crews
- 1,172 needles collected by Parks Crews
- 74,452.6 lbs. trash collected via Community Clean Teams -Parks 73,240 lbs. & SDOT 1212.6 lbs.
- 18 blocks of litter pickup by SDOT crews
- 155 tents counted onsite

Clean Cities Routes Site Cleaning Examples By 4 Quadrants

NW Community Clean Team

- **Puetz Golf:** 9-Tents, 11-Structures, 7-RV's, 200-Needles, 9,590lbs of debris -1/18

Before



Action



After



- 8th Ave NW: 1 block of litter pickup, 86.6lbs of debris – 1/18
- 14th Ave NW and NW 54th St: 1 block of litter pickup, 86.6lbs of debris – 1/18
- Ballard Commons: 1 block of litter pickup, 86.6lbs of debris – 1/18
- 37th Pl NW and Seaview Ave NW: 1 block of litter pickup, 86.6lbs of debris – 1/18
- NW 48th St and 17th Ave NW: 1 block of litter pickup, 86.6lbs of debris – 1/18
- Westlake Ave N and N Nickerson St: 1 block of litter pickup, 86.6lbs of debris – 1/18
- Dexter Ave N and 4th Ave N: 1 block of litter pickup, 86.6lbs of debris – 1/18
- **Fairview Ave N and Mercer St:** 8-Tents, 2-Structures, 240-Needles, 3,500lbs of debris, 2 blocks of litter pickup -1/19

Before

Action



After

Action



- Sandel Park: 2-Tents, 200lbs of debris -1/19
- Woodland Park: 40-Tents, 10-Structuers, 100-Needles, 7,640lbs of debris -1/19

- **I-5 South bound towards Northgate Way:** 5-Tents, 1-Structure, 100-Needles, 8,660lbs of debris -1/20
Before



Action



After



- 24th Ave NW and Shilshole Ave NW Vicinity: 4-Tents, 1-Structure, 20-Needles, 1,250lbs of debris -1/21
- Kinnear Park: 10-Tents, 22-Needles, 500lbs of debris -1/21
- Cascade Park: 2-Tents -1/21
- W Galer St and Elliott Ave: 1 block of litter pickup, 140lbs of debris – 1/21

NE Community Clean Team

- Magnuson Park: 5-Tents, 2-Needles, 150lbs of debris -1/18
- 1st Ave NE and NE 92nd St: 1 block of litter pickup, 86.6lbs of debris – 1/18
- NE 42nd St & NE 7th St: 1 block of litter pickup, 86.6lbs of debris – 1/18
- NE 42nd St and Pasadena pl NE: 1 block of litter pickup, 86.6lbs of debris – 1/18
- NE 120th St and 30th Ave NE: 1 block of litter pickup -1/19
- Thornton Creek (95th and Sandpoint Way): No-Tents, 1-RV, 4-Needles, 100lbs of debris -1/19

- **Homewood (upper location):** No-Tents, 1-Structure, 14-Needles, 1,500lbs of debris -1/19

Before



After



- **I-5 SB Northgate Way off Ramp:** 6-Tents, 1-Structure, 22-Needles, 2,000lbs of debris -1/19

Before

Action

After



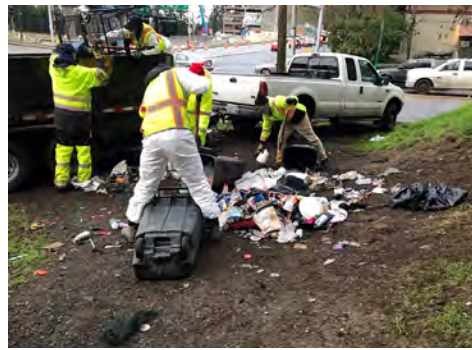
- Jackson Golf Trail: 4-Tents, 3-Structures, 4-Needles, 500lbs of debris -1/20
- Victory Creek: 1-Tent, 100lbs of debris -1/20

- NE 50th and 7th Ave NE: 4-Tents, 100-Needles, 1,200lbs of debris -1/20
- NE 50th I-5 On Ramp: 4-Tents, 9-Needles, 500lbs of debris -1/20
- **Jackson Golf off Ramp**: 3-Tents, 1-Structure, 12-Needles, 800lbs of debris -1/20

Before



Action



After



- Cedar Park route: 1 block of litter pickup, 100lbs of debris – 1/21
- University Park: 1 block of litter pickup, 20lbs of debris – 1/21
- Miller Playfield: 1-Tent, 3-Needles, 120lbs of debris -1/21
- Tashkent Park: 9-Tents, 1-Structure, 3-Needles, 150lbs of debris -1/21

SW Community Clean Team

- 7th Ave s and s Fidalgo: 1 block of litter pickup – 1/19
- Hiawatha Park: Clear of tents and debris -1/21

SE Community Clean Team

- 4th and Yesler: 15-Tents, 4-Structures, 180-Needles, 2,500lbs of debris -1/18, 1/21
- 5th and Yesler: 2-Tents, 24-Needles, 500lbs of debris -1/18
- **37th Ave S and S Adams St**: 1-Structure, 1,500lbs of debris -1/20

Before



Action



After



- 3rd Ave and cherry: TCP arrow board -1/20
- Julia Lee Park: 1-Tent, 2-Needles, 120lbs of debris -1/21
- Judge Charles Stoke: 5-Tents, 1-Structure, 2-Needles, 100lbs of debris -1/21
- Pratt Park: 2-Tents, 200lbs of debris -1/21

- **Nav Stairs:** 5-Tents, 2-Strutures, 52-Needles, 3,920lbs of debris -1/21

Before



Action



After



- **S Airport Way and S Forest:** 2-Tents, 13-Needles, 1,690lbs of debris -1/21

Before



Action



After



Look Ahead Week of January 24 to January 30

Emphasis Cleans:

- NW: NW Market St & NW Leary Way
- NW: Gas Works Park
- NE: Pasadena PL NE & NE 42nd St Vicinity
- NE: Burke Gilman Trail and University Bridge Vicinity
- SW: Myers Way JTF
- SW: Rotary Viewpoint
- SE: Hubble Place
- SE: Yesler Terrace/Harborview Emphasis Area

The Crews will be doing litter picks, trash mitigation; any Bio- Hazard removal that may be required, and related grounds maintenance work. Crews will also be providing maintenance and cleaning efforts both in and around these parks. Field inspections and cleaning of right of way areas will include stairways, multi-use paths, streets, and sidewalks in the immediate vicinity of these parks.