

Clean Cities Initiative (CCI) Weekly Report

April 1, 2021

Reporting Week March 22 through March 28

Week in Review

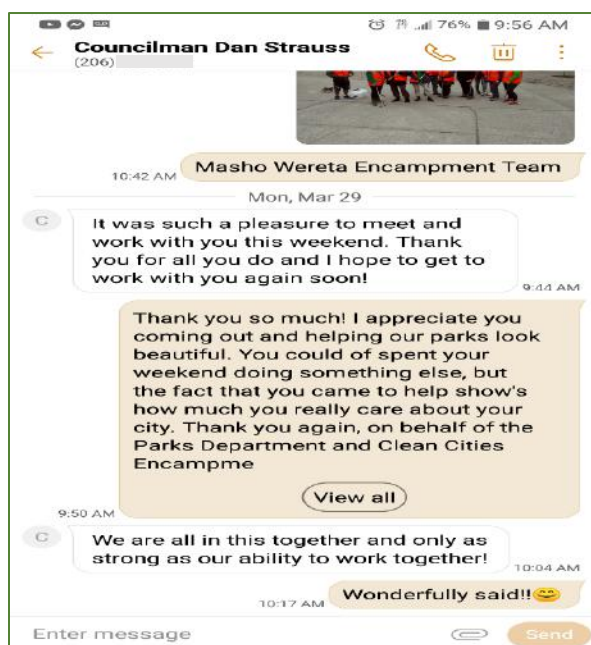
This week the community clean team focused on two large emphasis areas including Blanche Lavizzo Park and Camp Long, besides the various litter and trash pick-up locations citywide. 62 additional Clean Cities sites were completed by the Parks/SDOT Clean Cities Teams and 8 more sites were completed by SDOT crews alone. On Saturday, there were another 4 volunteer events focused on Golden Gardens, Alki Beach Park, Magnuson Park, and Jefferson Park. The following summary includes Clean Cities work accomplished by Parks/SDOT Clean Cities Crews.

By the Numbers:

- 8,122 needles collected
- 25 lbs. of debris removed during the jamboree clean at Blanche Lavizzo Park and Camp Long
- 72,370 lbs. trash collected via Community Clean Teams
- 28 blocks of litter pickup by SDOT crew
- 453 tents counted onsite; 1 abandoned tent removed

Kudos to Clean Cities

- **Councilman Dan Strauss attended our volunteer litter pick last Saturday - Golden Gardens Park**



Clean Cities Routes Site Cleaning Examples By 4 Quadrants

NW Community Clean Team

- Kinnear Park: 17-Tents, 4-Needles, 200lbs of debris -3/22
- NW 50th St from 14th Ave NW to 15th Ave NW: 4-Tents, 23-Needles, 600lbs of debris – 3/22
- NW 53rd St from 14th Ave NW to 15th: 5-Tents, 5-Needles, 1,000lbs of debris – 3/22
- NW 52nd St from 14th Ave NW to 15th Ave NW: 4-Tents, 500lbs of debris -3/22
- **Ballard Commons: 32-Tents, 12-Needles, 600lbs of debris -3/22**

Before



After



- **N 105th St to N 104th St from Fremont Ave N to Evanston Ave N: 6-Tents, 15-Needles, 1,000lbs of debris- 3/25**

Before



After



- Greenwood Park: Clear, nothing to report -3/25
- N 92nd Seattle Com College: SDOT crew – 3/25
- N 90th and Evanston: 4-Tents, 6-Needles, 500lbs of debris -3/25
- Woodland Park: 42-Tents, Shelters occupied, 12-Needles, 400lbs of debris-3/23
- Green lake Park: 7-Tents, 5-Needles, 400lbs of debris -3/23
- Gilman Park: SDOT crew – 3/24
- Bitter Lake Park and Community Center: 35-Tents, 6-Needles, 400lbs of debris – 3/25
- Puetz Golf Vicinity: 5-Tents, 6-Structures, 54-Needles, 2000lbs of debris -3/25

NE Community Clean Team

- Jackson Golf Course: 4-Tents, 2,360lbs of debris -3/22
- Pinehurst Playground: 1- Tent, Clear of debris -3/22, 3/26
- Albert Davis Park: 28-Tents, 4-Mega Structures, 1,800lbs of debris -3/22, 3/24, 3/26
- Lake City Mini Park: 13-Tents, 3-Mega Structures,300lbs of debris -3/22, 3/24,3/26
- Victory Creek Park: No Tents, 12-Needles, 50lbs of debris -3/22, 3/26
- Freeway Park: SDOT crew -3/24
- **2808 East Ward St: Abandoned site removed, 3,200lbs of debris- 3/24**

Before



After



- 2820 & Ward St: No tents, 4,115lbs of debris -3/24
- University Playground: 18-Tents, 1-Structure, 800lbs of debris -3/24
- **Miller Playground: 55-Tents, 5-Mega Structures, 1,880lbs of debris -3/25**

Before

After

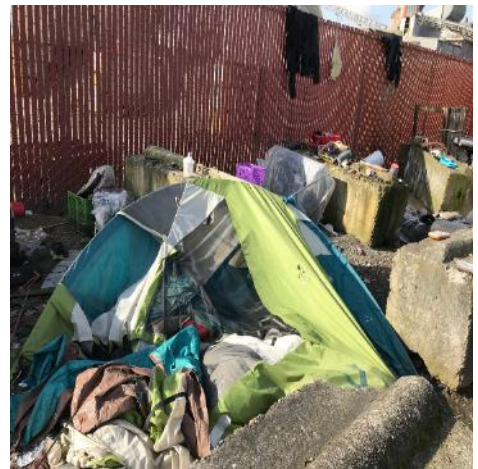


- William Place Park: 8-Tents, 560lbs of debris-3/25
- Broadway Hill Park: 3-Tents, 400lbs of debris -3/25
- Pasadena PL NE & NE 42nd St Vicinity: 5-Tents, 8-RV's – 3/25
- Northbound I-5 from N 92nd St to N 85th St: 8-Tents on Row WDOT -3/26

SW Community Clean Team

- **1st Ave & Mead: 3-Tents, 21-Needles, 4,700lbs of debris-3/23**

Before

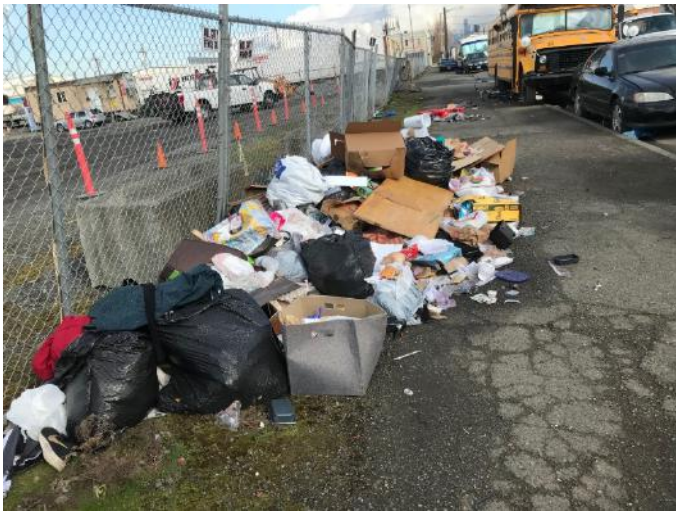


After



- **1st Ave & Dawson: RV's and Vehicles, 1,000lbs of debris- 3/23**

Before



After



- S Hardy & Stanley Ave S: 17 RV's, 1,310lbs of debris -3/24
- Ruby Chow Park: No tents, 2,450lbs of debris -3/24

SE Community Clean Team

- 4th Ave and Yesler Way: 15-Tents, 29-Needles, 500lbs of debris -3/22, 3/24, 3/26
- 4th Ave and Royal Brougham: 16-Tents, 27-Needles, 1,900lbs of debris -3/22, 3/26
- International District and I-5 Emphasis Area (S King St*): 22-Tents, 1-Mega Structure, 1,200lbs of debris-3/23
- S Lane St to S Dearborn St from 12th Ave S to 10th Ave S: 2-Structures, 3-Tents, 500lbs of debris -3/23
- 8th and Massachusetts: SDOT crew -3/23
- 6th and Massachusetts: SDOT crew -3/23
- 8th Ave S and S Holgate St Vicinity: 1-Abandoned site removed, 1,000lbs of debris-3/23
- 3rd Ave S & S Holgate St: 2-Tents, 2-Structures, 9-Needles, 1,000lbs of debris -3/23
- 8th Ave S & S Holgate: 4-Structures, 2-Tents, 24, needles, 6,700lbs of debris -3/23

- *King St btwn 8th and 10th : SDOT crew – 3/23*

Before



After



- 5th Ave and Yesler : 7-Tents, 200lbs of debris – 3/24, 3/26
- 3rd and Yesler: SDOT crew -3/24
- Prefontaine Park: 2-Tents, 2-Needles, 100lbs of debris -3/24, 3/26
- Cheasty Greenbelt at S McClellan St: 3-Tents, 1-Structure, 760lbs of debris -3/24
- Cheasty Greenbelt at S Winthrop St and Cheasty Blvd: 2-Mega Structures, 800lbs of debris-3/24
- S Forrest St and 25th Ave S Vicinity: Light trash, 200lbs of debris -3/24
- Bailey Gazette Elementary School: Light litter, Clear of anything else – 3/24
- S Royal brougham Way from Airport Way S to 4th Ave S: 4-Tents, Light trash, 150lbs of debris-3/24
- Sturgis Park: 6-Tents, 300lbs of debris-3/24
- Lewis Park: 1-Mega Structure, 150lbs of debris-3/24
- Daejeon: 4-Tents, 1,310lbs of debris -3/24
- Julia Lee’s Park: 10-Tents, 1-Strcuture, 200lbs of debris -3/24, 3/26
- I-90 Trail: SDOT crew -3/24
- Othello Park: Clear nothing to report – 3/25
- MLK, Jr. Memorial Park: 1-Structure, 300lbs of debris -3/25, 3/26
- Amy Yee Tennis Center: 1-Tent, 500lbs of debris -3/25, 3/26

- S Hill St from 22nd Ave S to 21st Ave S: 3-Tents, 3-RV's, 190lbs of debris – 3/25, 3/26
- Navigation Center Vicinity (Navigation Stairs*): 7-Tents, 190lbs of debris – 3/26, 3/26
- City Hall Park: 38-tents, 10-Needles, 100lbs of debris-3/26
- **Harborview Hill: Inspection -3/26**



- Alaskan Way and Marion St Vicinity: 5-Tents, 4-Needles, 200lbs of debris – 3/26

Volunteer Clean Project – 3/27

NE: Magnuson Park: 9-Volunteers, 1-Bag of garbage

SE: Jefferson Park: 10-Volunteers, 8-Bags of garbage

NW: Golden Gardens Park: 12-Volunteers, 1-Needle, 5-Bags of garbage



SW: Alki Beach: 6-Volunteers, 5-Needles, 6-Bags of garbage





Clean Cities Emphasis Areas

- Blanche Lavizzo Park- 3/23, the encampment Team and SDOT completed a through litter pick. CE Crew removed remaining leaves from shrub beds, tree wells, sidewalks and play area. The shelter house area and amphitheater were pressure washed. The park was line trimmed and edged. 1-Bedroll

Leave blowing the park



Leaf blowing the play area



Tractor work removing leaves



Edging the park



Pressure washing the shelter house

Before



After



- Camp Long – 3/25, 3/26 SW crew removed blackberry and other invasive weeds from shrub beds and along the fence line. Some shrubs were pruned. A section of the service road was regraded with gravel and the ditch drain was cleared.

Before - Weeding shrub beds, clearing leaves from drain



After - shrub beds weeded and drain cleared of leaves



Before - Cutting and removing blackberry and invasive vegetation from fence line



Look Ahead Week of March 29 to April 4

Emphasis Cleans:

NW: Bitter Lake Playfield

NW: Marvin Gardens

NE: 138th & Linden Ave N

NE: Cascade park

SW: Camp Long

SW: 9400 Delridge Way SW

SE: MLK 37th to S Juneau or Graham

SE: 2nd Ave S and S Fontanelle

The Crews will be doing litter picks, trash mitigation; any Bio- Hazard removal that may be required, and related grounds maintenance work. Crews will also be providing maintenance and cleaning efforts both in and around these parks. Field inspections and cleaning of right of way areas will include stairways, multi-use paths, streets, and sidewalks in the immediate vicinity of these parks.