

November/December 2022

LIGHT Reading

STORM SEASON IS HERE! ARE YOU PREPARED?

It's that time of year when the weather can go from bright and sunny to dark and stormy in a matter of minutes. Extreme weather like wind storms and heavy snow can result in power outages in our area. We have a few tips and resources for how you can prepare and keep your family comfortable, informed and most importantly, safe this season.

For more tips, visit powerlines.seattle.gov/stormprep.



Build or update your outage kit.



**Keep your
electronic devices
charged.**



**Never use grills
or BBQs indoors.**



**Follow Seattle City Light
on Facebook or Twitter
for outage updates.**

Keep your family safe this storm season.
For more tips, visit powerlines.seattle.gov/stormprep.



Seattle City Light

seattle.gov/city-light

twitter.com/SEACityLight

facebook.com/SeattleCityLight

SEATTLE CITY LIGHT RATE ADJUSTMENT

The Seattle City Council approved City Light's 2023–2024 Rate Ordinance this fall. This ordinance includes an established rate path to address the increasing costs to ensure our delivery of safe, reliable and environmentally responsible energy.

Visit powerlines.seattle.gov/rate-increase to learn more.

SUPPORT CLEAN ENERGY WITH GREEN UP

Green Up is a voluntary renewable energy program that allows you to support Pacific Northwest wind, solar and other renewable energy projects. You also help us fund rooftop solar projects hosted by not-for-profits like schools, parks and affordable housing organizations.

Learn more at seattle.gov/city-light/GULR.

BEWARE OF SCAMMERS

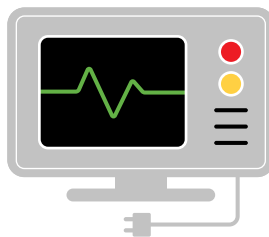
Be scam smart! Scammers continue to intimidate City Light customers. We have tips on our Powerlines blog to help you spot a potential scam and what you can do to make sure you don't fall victim to these schemes: powerlines.seattle.gov/scams.



KEEP LOVED ONES SAFE WITH LIFE SUPPORT EQUIPMENT PROGRAM

City Light is committed to ensuring that all of our customers have reliable power. This is especially important to those who depend on life support equipment. If someone in your home is dependent on this equipment, we provide assistance to help you maintain safety during planned and unplanned outages through the Life Support Equipment Program.

For more information about this program and tips for managing outages with life support equipment, visit seattle.gov/city-light/life-support.



City Light crews are continuously working to improve our services and the communities we serve—from maintaining our electrical infrastructure to upgrading equipment to exploring new energy technology solutions—all to deliver safe, clean and reliable power to you.

Learn more about projects in your area by visiting seattle.gov/city-light/current-projects.

SAFETY TIP FROM THE FIELD



Crews work around active electrical equipment, which presents dangerous situations for customers. Customers should adhere to proper social distancing from worksites and City Light employees. Please wait until a crew member comes to you.



700 Fifth Avenue
PO Box 34023
Seattle, WA 98124-4023

Questions, comments or suggestions? Call **(206) 684-3000**.
Email us at SCL_ExternalComms@seattle.gov

Newsletter available in Spanish, Vietnamese, Chinese, Somali, Tagalog and Korean online or call **(206) 684-3000**.



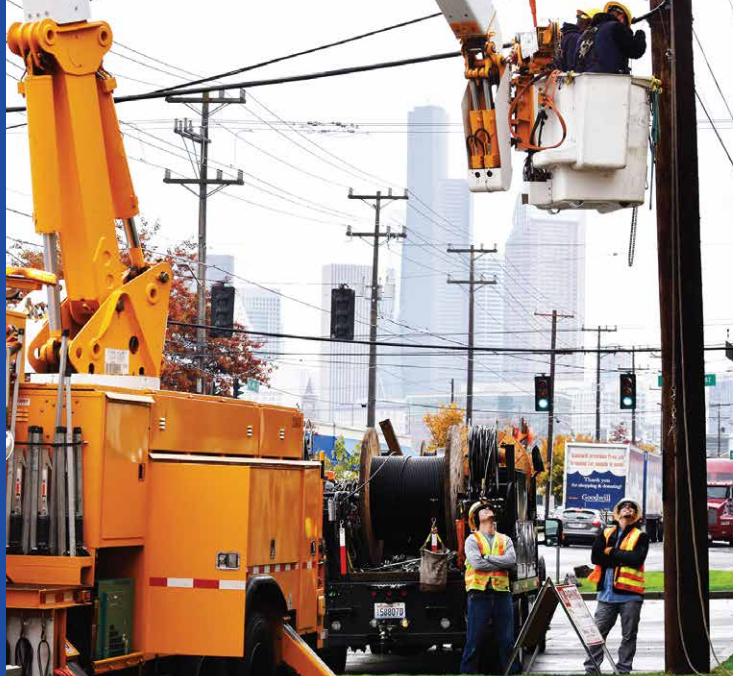
The mark of responsible forestry

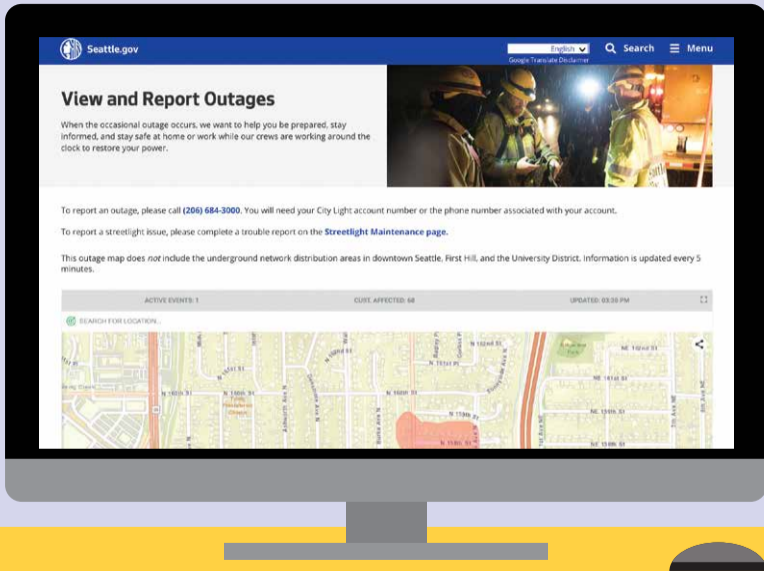
We're hiring!

Join our team of dedicated employees who are committed to (em)powering our community. We're hiring for a variety of positions and adding more positions to our site regularly. View our current openings on our website: seattle.gov/city-light/about-us/careers.



Seattle City Light





STAY INFORMED WHEN YOUR POWER GOES OUT



For updates, visit:
seattle.gov/city-light/outages



Seattle City Light

