

# VICTOR STEINBRUECK PARK

100% SCHEMATIC DESIGN DRAWINGS

## PROJECT TEAM

**OWNER:**

Seattle Parks and Recreation  
100 Dexter Ave N  
Seattle, WA 98109  
Ph. 206-684-4075



**CONSULTANT TEAM:**

**LANDSCAPE ARCHITECT:**

Walker | Macy  
1218 3rd Ave, Suite 1310  
Seattle, WA 98101  
Ph. 206-582-3874

**CIVIL:**

Osborn Consulting  
1800 112th Ave, NE Suite 220E  
Bellevue, WA 98004  
Ph. 452-451-4009

**ELECTRICAL:**

Reyes Engineering  
800 5th Ave Suite 4100  
Seattle, WA 98104  
Ph. 206-922-2644

**LIGHTING DESIGN:**

Little Fish Lighting  
PO Box 2401  
Redmond, WA 98073-2401  
Ph. 206-334-2401

**ARCHITECT:**

Patano Studio Architecture  
603 Stewart St Suite 500  
Seattle, WA 98101  
Ph. 206-734-3870

**STRUCTURAL:**

Lund Opsahl  
1201 1st Ave Suite 310  
Seattle, WA 98134  
Ph. 206-402-5156

**SURVEY:**

BRH  
2009 Minor Ave E  
Seattle, WA 98102  
Ph. 206-323-4144

**WATERPROOFING:**

Amento Group  
710 2nd Ave Suite 400  
Seattle, WA 98104  
Ph. 206-682-9722

**INTERPRETIVE DESIGN:**

Jones and Jones  
105 Main St S Suite 300  
Seattle, WA 98104  
Ph. 206-624-5702

## PROJECT SUMMARY

SITE ADDRESS: 1900 Western Ave  
Seattle, WA

ZONING: PMM-85 (Pike Market Mixed - 85)

PROJECT DESCRIPTION: Park

TAX PARCEL: King County Parcel No.



## VICINITY MAP

## SHEET INDEX

- L010** SITE PHOTOS : EXISTING CONDITIONS
- L101** MATERIALS PLAN
- L102** MATERIALS PLAN
- L201** LAYOUT PLAN
- L202** LAYOUT PLAN
- L301** GRADING PLAN
- L302** GRADING PLAN
- L601** SECTIONS
- L602** SECTIONS

- AD100** DEMOLITION PLAN
- A100** PLANS
- A200** ELEVATIONS
- A300** SECTION
  
- EL000** LUMINAIRE SCHEDULE AND LIGHTING NOTES
- EL101** LIGHTING SITE PLAN NORTH
- EL102** LIGHTING SITE PLAN SOUTH
  
- ID101** NATIVE AMERICAN CULTURAL ELEMENTS



DECORATIVE FENCE  
TOTEM POLE BASE



GUARDRAIL TYPE 2 (NEAR)  
DECORATIVE FENCE



GUARDRAIL TYPE 1  
BRICK PAVING



LAWN, WALL, LIGHT POST



PERGOLA



PERGOLA  
BRICK PAVING



TABLE AND STOOL



BENCH



TREE AND LAWN  
TABLE, STOOL, BENCH



WESTERN AVENUE SIDEWALK



"TREE OF LIFE" PUBLIC ART PIECE  
WALL, LAWN



"TREE OF LIFE" PUBLIC ART PIECE  
WALL LAWN

>>>>CAUTION - CALL 811<<<<  
UTILITY NOTIFICATION CENTER  
BEFORE YOU DIG!

WWW.CALLBEFOREYODIG.ORG

NOT LESS THAN 2 OR MORE THAN 10 BUSINESS DAYS PRIOR TO COMMENCING EXCAVATION OR DEMOLITION, SECURE THE SERVICES OF A COMMERCIAL UNDERGROUND UTILITIES LOCATOR SERVICE TO IDENTIFY BELOW-GROUND IMPROVEMENTS THAT MAY NOT BE INDICATED ON THE DRAWINGS. ADDITIONALLY, TO REQUEST ON-SITE UNDERGROUND UTILITY SYSTEMS LOCATES, CALL SPR INSPECTION REQUEST LINE @ (206) 684-7034. REFER TO SECTIONS 02100 & 02120 OF THE SPECIFICATIONS FOR INSTRUCTIONS ON HOW TO PROCEED.

WALKER | MACY

LANDSCAPE ARCHITECTURE  
1212 2ND AVE, SUITE 1510  
SEATTLE, WA 98104  
206-882-3874

3		
2		
1		
NO.	REVISION - AS BUILT	DATE

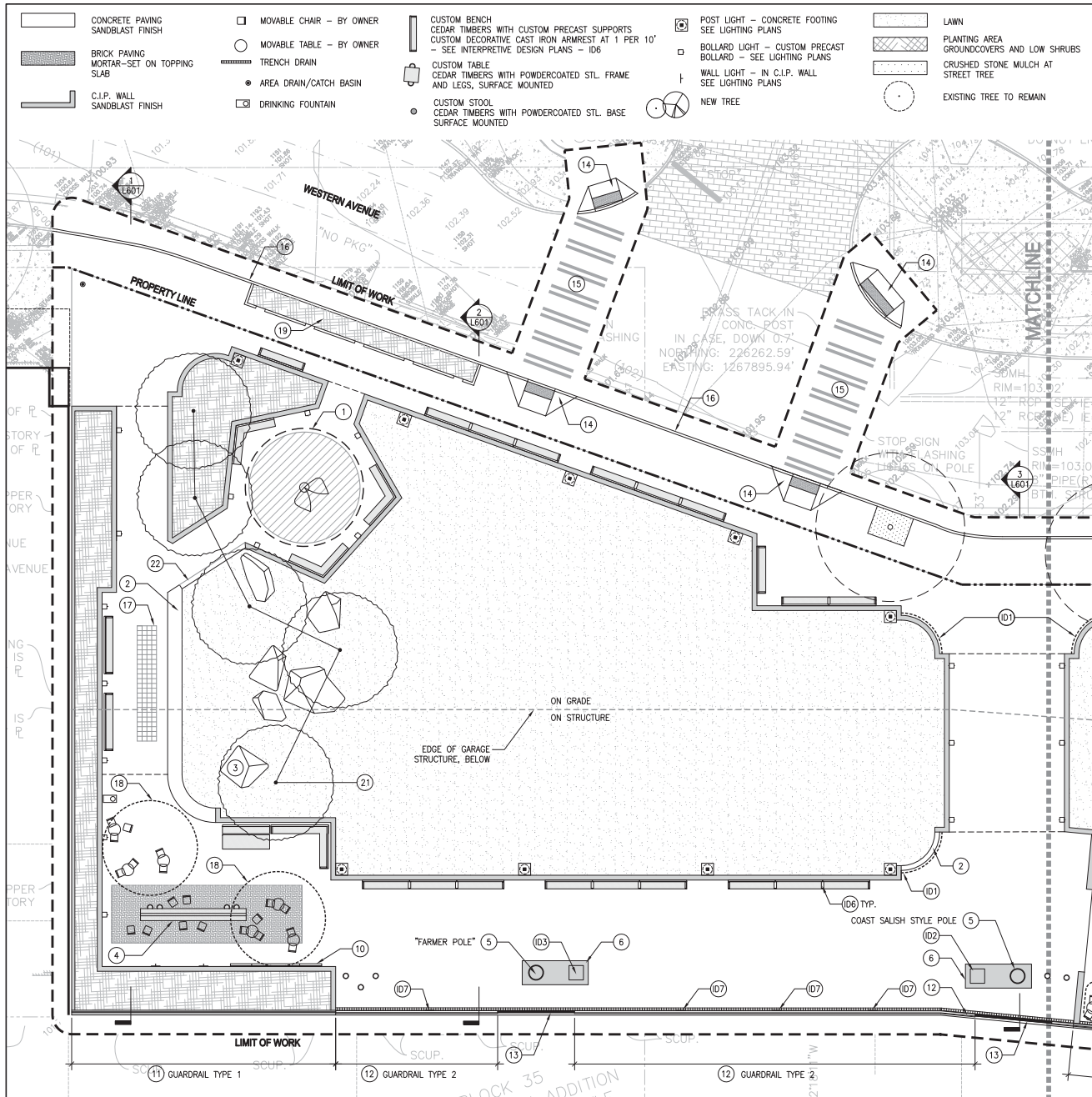
REVIEWED: PARK ENGINEER DATE  
All work done in accordance with the City of Seattle Standard Plans and Specifications it, except on the date shown above, and supplemented by Special Provisions.



VICTOR STEINBRUECK  
PARK  
100% SD  
SITE PHOTOS: EXISTING  
CONDITIONS

DESIGNED LR/CG	DATE 01/27/2017
DRAWN CG/NS	SHEET 1 of 1
CHECKED n/s	
ORDINANCE NO. -	L010
CONTRACT NO. -	
SCALE	

NOT FOR CONSTRUCTION

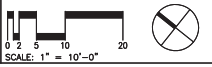


- CONCRETE PAVING SANDBLAST FINISH
- BRICK PAVING MORTAR-SET ON TOPPING SLAB
- C.I.P. WALL SANDBLAST FINISH
- MOVABLE CHAIR - BY OWNER
- MOVABLE TABLE - BY OWNER
- TRENCH DRAIN
- AREA DRAIN/CATCH BASIN
- DRINKING FOUNTAIN
- CUSTOM BENCH CEDAR TIMBERS WITH CUSTOM PRECAST SUPPORTS CUSTOM DECORATIVE CAST IRON ARMREST AT 1 PER 10' - SEE INTERPRETIVE DESIGN PLANS - ID6
- CUSTOM TABLE CEDAR TIMBERS WITH POWDERCOATED STL. FRAME AND LEGS, SURFACE MOUNTED
- CUSTOM STOOL CEDAR TIMBERS WITH POWDERCOATED STL. BASE SURFACE MOUNTED
- POST LIGHT - CONCRETE FOOTING SEE LIGHTING PLANS
- BOLLARD LIGHT - CUSTOM PRECAST BOLLARD - SEE LIGHTING PLANS
- WALL LIGHT - IN C.I.P. WALL SEE LIGHTING PLANS
- NEW TREE

- LAWN
- PLANTING AREA GROUNDCOVERS AND LOW SHRUBS
- CRUSHED STONE MULCH AT STREET TREE
- EXISTING TREE TO REMAIN

**KEY NOTES**

- 1 "TREE OF LIFE" SCULPTURE - SALVAGED AND REINSTALLED
- 2 6" CONCRETE CURB
- 3 GRANITE BOULDER/SLAB 6'-10" ACROSS, 1-3' HIGH
- 4 "COUNCIL TABLE" CEDAR TIMBERS, POWDERCOATED STL. FRAME AND LEGS CUSTOM DECORATIVE CAST IRON ELEMENTS
- 5 TOTEM POLE - SALVAGED AND REINSTALLED SWITCH LOCATIONS
- 6 C.I.P. TOTEM POLE PEDESTAL - 18" HIGH SEE INTERPRETIVE DESIGN PLAN - ID4
- 7 C.I.P. STAIR WITH BRUSHED S.S. HANDRAILS
- 8 STORAGE CLOSET - CONCRETE WALLS AND TOP, METAL DOORS
- 9 PERGOLA - SEE ARCHITECTURAL DRAWINGS
- 10 FREESTANDING COUNTER POWDERCOATED STL., SHOP WELDED SURFACE MOUNTED
- 11 GUARD RAIL TYPE 1 36" HIGH C.I.P. WALL POWDERCOATED STL. LEAN-RAIL AND POSTS SHOP WELDED MARKER LIGHT IN C.I.P. BASE - SEE LIGHTING PLAN
- 12 GUARD RAIL TYPE 2 PRECAST POSTS NEW DECORATIVE IRON PANELS TO MATCH ORIGINAL POWDERCOATED STL. LEAN-RAIL AND POSTS SHOP WELDED MARKER LIGHT IN C.I.P. BASE - SEE LIGHTING PLAN
- 13 DECORATIVE STL. FENCE PANEL SALVAGED AND REFINISHED
- 14 NEW CURB RAMP, C.O.S. STD.
- 15 NEW CROSSWALK
- 16 EXISTING CURB AND GUTTER TO REMAIN
- 17 DECORATIVE/PLAY PAVING PATTERN OR INLAY
- 18 FLEXIBLE ACTIVITY AREA
- 19 RAIN GARDEN DEPRESSED PLANTING AREA, C.I.P. CURBS, OVERFLOW DRAIN
- 20 NEW SPECIMEN DECIDUOUS TREE - 12-18" CALIPER
- 21 NEW DECIDUOUS TREE - 4" CALIPER
- 22 FLUSH CURB FOR LAWNMOWER ACCESS
- 23 C.I.P. PAVING ON NEW BEAM-SUPPORTED STRUCTURE
- ID1 "WELCOME" AND "THANK YOU" TEXT CAST INTO WALL SEE INTERPRETIVE DESIGN PLANS
- ID2 COAST SALISH PEOPLES MAP SEE INTERPRETIVE DESIGN PLANS
- ID3 TOTEM POLE INTERPRETIVE TEXT PLAQUE SEE INTERPRETIVE DESIGN PLANS
- ID4 TOTEM POLE PEDESTAL PATTERN SEE INTERPRETIVE DESIGN PLANS
- ID5 PERGOLA COLUMNS SEE INTERPRETIVE DESIGN PLANS
- ID6 BENCH ARM RESTS SEE INTERPRETIVE DESIGN PLANS
- ID7 NATIVE SAYINGS TEXT SEE INTERPRETIVE DESIGN PLANS



**>>>>CAUTION - CALL 811<<<<**  
**UTILITY NOTIFICATION CENTER**  
**BEFORE YOU DIG!**  
[WWW.CALLBEFOREYOUTDIG.ORG](http://WWW.CALLBEFOREYOUTDIG.ORG)

NOT LESS THAN 2 OR MORE THAN 10 BUSINESS DAYS PRIOR TO COMMENCING EXCAVATION OR DEMOLITION, SECURE THE SERVICES OF A COMMERCIAL UNDERGROUND UTILITIES LOCATOR SERVICE TO IDENTIFY BELOW-GROUND IMPROVEMENTS THAT MAY NOT BE INDICATED ON THE DRAWINGS. ADDITIONALLY, TO REQUEST ON-SITE UNDERGROUND UTILITY SYSTEMS LOCATES, CALL SPR INSPECTION REQUEST LINE @ (206) 684-7834. REFER TO SECTIONS 02100 & 02120 OF THE SPECIFICATIONS FOR INSTRUCTIONS ON HOW TO PROCEED.

**WALKER MACY**

LANDSCAPE ARCHITECTURE  
 1510 9th Ave, Suite 1910  
 SEATTLE, WA 98104  
 206-462-8874

3		
2		
1		
NO.	REVISION - AS BUILT	DATE

REVIEWED:	PARK ENGINEER	DATE
-----------	---------------	------

All work done in accordance with the City of Seattle Standard Plans and Specifications is subject to the date shown above, and supplemented by Special Provisions.



**VICTOR STEINBRUECK PARK**  
**100% SD**

**MATERIALS PLAN**

DESIGNED	LR/CG	DATE	01/27/2017
DRAWN	CG/NS	SHEET	1 OF 2
CHECKED	n/g		
ORDINANCE NO.	-		<b>L101</b>
CONTRACT NO.	-		
SCALE			

**NOT FOR CONSTRUCTION**

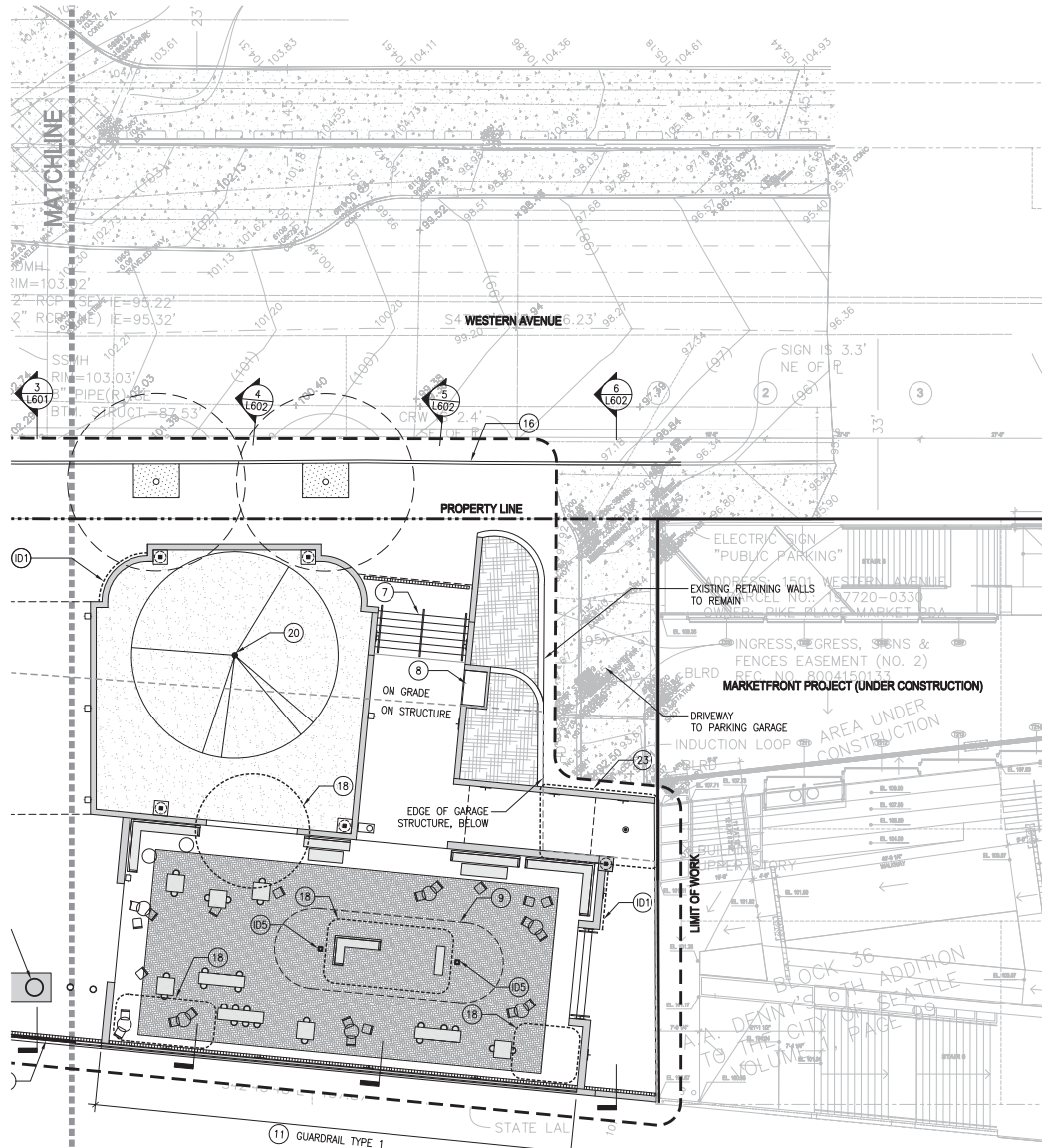
- CONCRETE PAVING  
SANDBLAST FINISH
- BRICK PAVING  
MORTAR-SET ON TOPPING  
SLAB
- C.I.P. WALL  
SANDBLAST FINISH

- MOVABLE CHAIR - BY OWNER
- MOVABLE TABLE - BY OWNER
- TRENCH DRAIN
- AREA DRAIN/CATCH BASIN
- DRINKING FOUNTAIN

- CUSTOM BENCH  
CEDAR TIMBERS WITH CUSTOM PRECAST SUPPORTS  
CUSTOM DECORATIVE CAST IRON ARMREST AT 1 PER 10'  
- SEE INTERPRETIVE DESIGN PLANS - ID6
- CUSTOM TABLE  
CEDAR TIMBERS WITH POWDERCOATED STL. FRAME  
AND LEGS, SURFACE MOUNTED
- CUSTOM STOOL  
CEDAR TIMBERS WITH POWDERCOATED STL. BASE  
SURFACE MOUNTED

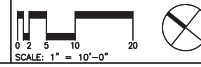
- POST LIGHT - CONCRETE FOOTING  
SEE LIGHTING PLANS
- BOLLARD LIGHT - CUSTOM PRECAST  
BOLLARD - SEE LIGHTING PLANS
- WALL LIGHT - IN C.I.P. WALL  
SEE LIGHTING PLANS
- NEW TREE

- LAWN
- PLANTING AREA  
GROUNDCOVERS AND LOW SHRUBS
- CRUSHED STONE MULCH AT  
STREET TREE
- EXISTING TREE TO REMAIN



**KEY NOTES**

- 1 "TREE OF LIFE" SCULPTURE - SALVAGED AND REINSTALLED
- 2 6" CONCRETE CURB
- 3 GRANITE BOULDER/SLAB 6'-10" ACROSS, 1'-3" HIGH
- 4 "COUNCIL TABLE" CEDAR TIMBERS, POWDERCOATED STL. FRAME AND LEGS CUSTOM DECORATIVE CAST IRON ELEMENTS
- 5 TOTEM POLE - SALVAGED AND REINSTALLED SWITCH LOCATIONS
- 6 C.I.P. TOTEM POLE PEDESTAL - 18" HIGH SEE INTERPRETIVE DESIGN PLAN - ID4
- 7 C.I.P. STAIR WITH BRUSHED S.S. HANDRAILS
- 8 STORAGE CLOSET - CONCRETE WALLS AND TOP, METAL DOORS
- 9 PERGOLA - SEE ARCHITECTURAL DRAWINGS
- 10 FREESTANDING COUNTER POWDERCOATED STL., SHOP WELDED SURFACE MOUNTED
- 11 GUARD RAIL TYPE 1 36" HIGH C.I.P. WALL POWDERCOATED STL. LEAN-RAIL AND POSTS SHOP WELDED MARKER LIGHT IN C.I.P. BASE - SEE LIGHTING PLAN
- 12 GUARD RAIL TYPE 2 PRECAST POSTS NEW DECORATIVE IRON PANELS TO MATCH ORIGINAL POWDERCOATED STL. LEAN-RAIL AND POSTS SHOP WELDED MARKER LIGHT IN C.I.P. BASE - SEE LIGHTING PLAN
- 13 DECORATIVE STL. FENCE PANEL SALVAGED AND REFURBISHED
- 14 NEW CURB RAMP, C.O.S. STD.
- 15 NEW CROSSWALK
- 16 EXISTING CURB AND GUTTER TO REMAIN
- 17 DECORATIVE/PLAY PAVING PATTERN OR INLAY
- 18 FLEXIBLE ACTIVITY AREA
- 19 RAIN GARDEN DEPRESSED PLANTING AREA, C.I.P. CURBS, OVERFLOW DRAIN
- 20 NEW SPECIMEN DECIDUOUS TREE - 12"-18" CALIPER
- 21 NEW DECIDUOUS TREE - 4" CALIPER
- 22 FLUSH CURB FOR LAWNMOWER ACCESS
- 23 C.I.P. PAVING ON NEW BEAM-SUPPORTED STRUCTURE
- ID1 "WELCOME" AND "THANK YOU" TEXT CAST INTO WALL SEE INTERPRETIVE DESIGN PLANS
- ID2 COAST SALISH PEOPLES MAP SEE INTERPRETIVE DESIGN PLANS
- ID3 TOTEM POLE INTERPRETIVE TEXT PLAQUE SEE INTERPRETIVE DESIGN PLANS
- ID4 TOTEM POLE PEDESTAL PATTERN SEE INTERPRETIVE DESIGN PLANS
- ID5 PERGOLA COLUMNS SEE INTERPRETIVE DESIGN PLANS
- ID6 BENCH ARM RESTS SEE INTERPRETIVE DESIGN PLANS
- ID7 NATIVE SAYINGS TEXT SEE INTERPRETIVE DESIGN PLANS



**>>>>CAUTION - CALL 811<<<<**  
**UTILITY NOTIFICATION CENTER**  
**BEFORE YOU DIG!**  
[WWW.CALLBEFOREYODIG.ORG](http://WWW.CALLBEFOREYODIG.ORG)

NOT LESS THAN 2 OR MORE THAN 10 BUSINESS DAYS PRIOR TO COMMENCING EXCAVATION OR DEMOLITION, SECURE THE SERVICES OF A COMMERCIAL UNDERGROUND UTILITIES LOCATOR SERVICE TO IDENTIFY BELOW-GROUND IMPROVEMENTS THAT MAY NOT BE INDICATED ON THE DRAWINGS. ADDITIONALLY, TO REQUEST ON-SITE UNDERGROUND UTILITY SYSTEMS LOCATES, CALL SPR INSPECTION REQUEST LINE @ (206) 684-7834. REFER TO SECTIONS 02100 & 02120 OF THE SPECIFICATIONS FOR INSTRUCTIONS ON HOW TO PROCEED.

**WALKER MACY**  
 LANDSCAPE ARCHITECTURE  
 1510 9th Ave, Suite 1910  
 SEATTLE, WA 98104  
 206-882-8874

3		
2		
1		
NO.	REVISION - AS BUILT	DATE

REVIEWED: PARK ENGINEER DATE  
 All work done in accordance with the City of Seattle Standard Plans and Specifications is subject to the date shown above, and supplemented by Special Provisions.

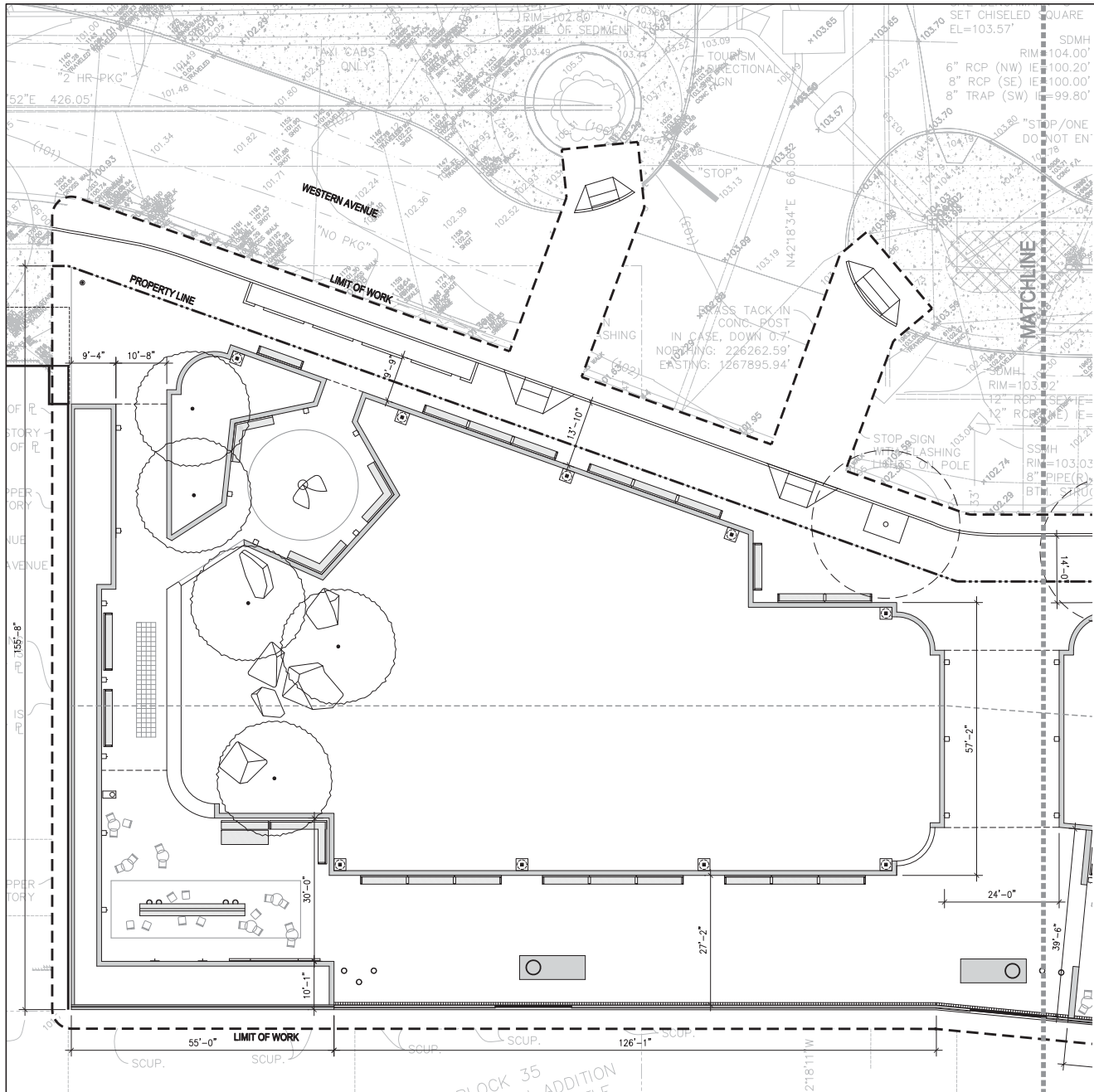


**VICTOR STEINBRUECK PARK**  
 100% SD

**MATERIALS PLAN**

DESIGNED	LR/CG	DATE	01/27/2017
DRAWN	CG/NS	SHEET	2 OF 2
CHECKED	n/g		
ORDINANCE NO.	-		<b>L102</b>
CONTRACT NO.	-		
SCALE			

NOT FOR CONSTRUCTION

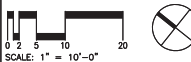


**LEGEND**

- BASELINE
- CENTERLINE
- EXTENSION OF BUILDING FACE
- ISOLATION JOINT
- DOWELED ISOLATION JOINT
- B BEARING
- C CHORD LENGTH
- EQ EQUAL LENGTH OF CURVE
- L ON CENTER
- POB POINT OF BEGINNING
- PC POINT OF CURVATURE
- PCC POINT OF COMPOUND CURVATURE
- PRC POINT OF REVERSE CURVATURE
- PI POINT OF INTERSECTION
- PT POINT OF TANGENCY
- R RADIUS
- RP RADIUS CENTER POINT
- SP SPACES
- VIF VERIFY IN FIELD
- ( ) ALIGN

**LAYOUT NOTES**

1. SITE SURVEY WAS PREPARED BY BRH ON 2/11/16. ALL COORDINATES SHOWN ON THE DRAWINGS ARE BASED UPON THE COORDINATE SYSTEM ESTABLISHED BY THE SURVEYOR. WALKER MACY ASSUMES NO RESPONSIBILITY FOR ACCURACY OF SURVEYED CONDITIONS AS SHOWN. SURVEY INFORMATION IS PROVIDED FOR REFERENCE ONLY.
2. DO NOT SCALE FROM THE DRAWINGS. THE LOCATION OF FEATURES NOT SPECIFICALLY DIMENSIONED MAY NOT BE DETERMINED BY SCALE. IF CONFLICTS ARISE IN THE FIELD, CONTACT OWNER'S REPRESENTATIVE FOR RESOLUTION.
3. ALL DIMENSIONS ARE TO THE OUTSIDE FACE OF BUILDINGS AND WALLS OR BACK OF CURBS, UNLESS OTHERWISE NOTED.
4. ALL CURVED OBJECTS SHALL HAVE SMOOTH, CONTINUOUS CURVES WITH CONSISTENT RADI AS INDICATED. EACH CURVE SHALL MEET ADJACENT CURVES OR LINEAR SECTIONS ON THE TANGENT, UNLESS NOTED OTHERWISE.



**>>>>CAUTION - CALL 811<<<<**  
**UTILITY NOTIFICATION CENTER**  
**BEFORE YOU DIG!**  
[WWW.CALLBEFOREYOUTDIG.ORG](http://WWW.CALLBEFOREYOUTDIG.ORG)

NOT LESS THAN 2 OR MORE THAN 10 BUSINESS DAYS PRIOR TO COMMENCING EXCAVATION OR DEMOLITION, SECURE THE SERVICES OF A COMMERCIAL UNDERGROUND UTILITIES LOCATOR SERVICE TO IDENTIFY BELOW-GROUND IMPROVEMENTS THAT MAY NOT BE INDICATED ON THE DRAWINGS. ADDITIONALLY, TO REQUEST ON-SITE UNDERGROUND UTILITY SYSTEMS LOCATES, CALL SPR INSPECTION REQUEST LINE @ (206) 684-7834. REFER TO SECTIONS 02100 & 02120 OF THE SPECIFICATIONS FOR INSTRUCTIONS ON HOW TO PROCEED.

**WALKER MACY**  
 LANDSCAPE ARCHITECTURE  
 1510 9th AVE, SUITE 1919  
 SEATTLE, WA 98104  
 206-462-8874

3		
2		
1		
NO.	REVISION - AS BUILT	DATE

REVIEWED: \_\_\_\_\_ PARK ENGINEER \_\_\_\_\_ DATE \_\_\_\_\_  
 All work done in accordance with the City of Seattle Standard Plans and Specifications is subject to the date shown above, and supplemented by Special Provisions.

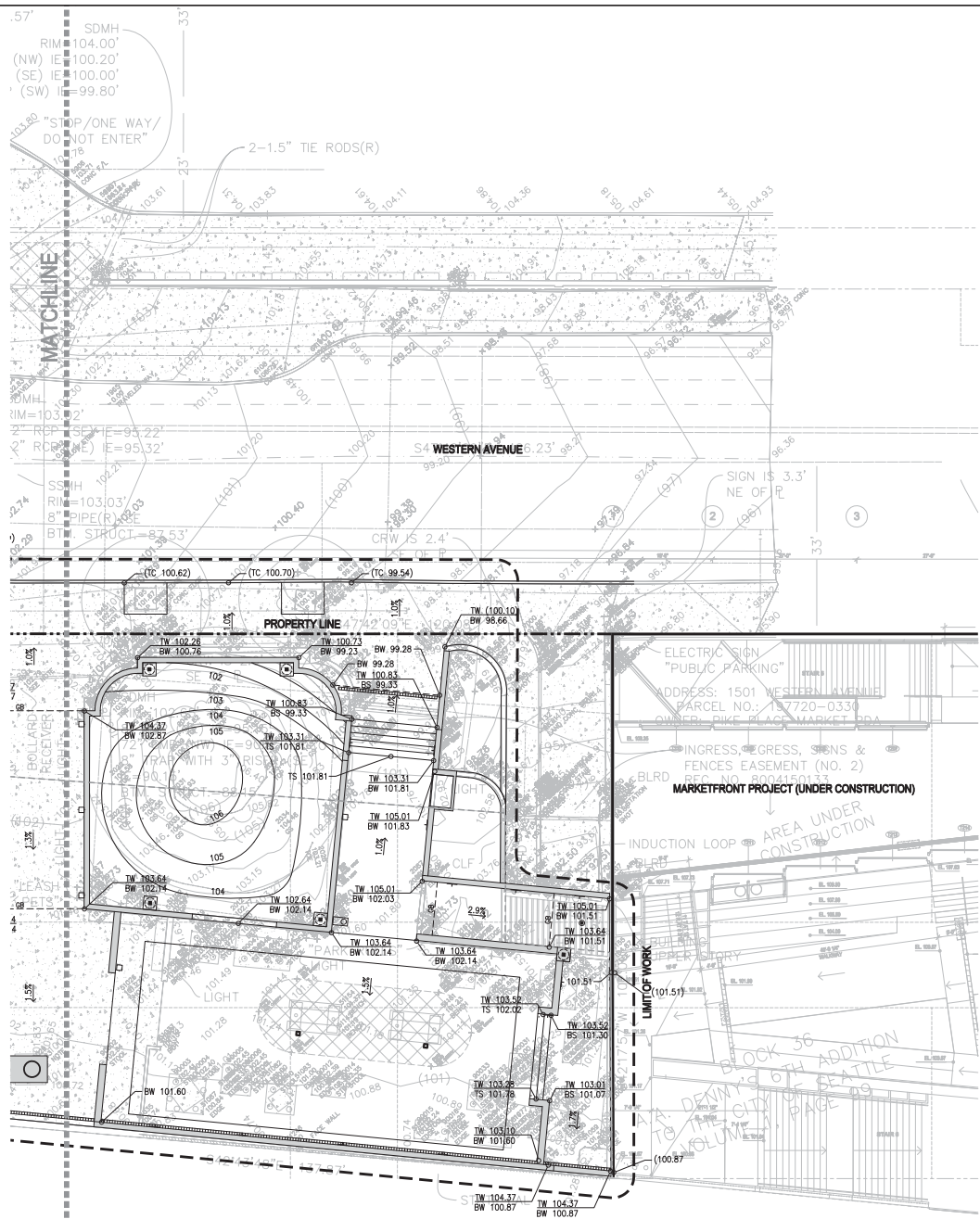


**VICTOR STEINBRUECK PARK**  
 100% SD

**LAYOUT PLAN**

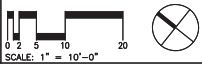
DESIGNED	LR/CG	DATE	01/27/2017
DRAWN	CG/NS	SHEET	1 OF 2
CHECKED	n/g	ORDINANCE NO.	-
		CONTRACT NO.	-
		SCALE	L201

**NOT FOR CONSTRUCTION**



- LEGEND**
- 104 PROPOSED CONTOUR
  - (104) EXISTING CONTOUR
  - 104.72 PROPOSED SPOT ELEVATION
  - (104.70) EXISTING SPOT ELEVATION
  - GRADE BREAK
  - FLOW LINE
  - MATCH EXISTING ELEVATION
  - 4:1 4.9% DIRECTION AND PERCENTAGE OR HV RATIO OF SLOPE
  - AD AREA DRAIN
  - CB CATCH BASIN
  - EA EACH
  - FC FLUSH CURB
  - FFE FINISH FLOOR ELEVATION
  - FG FINISH GRADE
  - FL FLOW LINE
  - HP HIGH POINT
  - HPS HIGH POINT OF SWALE
  - LP LOW POINT
  - IE INVERT ELEVATION
  - BC BOTTOM OF CURB
  - TC TOP OF CURB
  - BR BOTTOM OF RAMP
  - TR TOP OF RAMP
  - BS BOTTOM OF STEP
  - TS TOP OF STEP
  - BW BOTTOM OF WALL (AT FG OF PAVING)
  - TW TOP OF WALL
  - TD TRENCH DRAIN
  - RIM RIM ELEVATION
  - R RISER
  - T TREAD
  - WF VERIFY IN FIELD

- GRADING NOTES**
- VERIFY ACCURACY OF EXISTING GRADES AND INTERPOLATED ELEVATIONS PRIOR TO BEGINNING WORK. NOTIFY OWNER'S REPRESENTATIVE OF ANY DISCREPANCY PRIOR TO BEGINNING WORK.
  - PROTECT ALL TREES INDICATED TO REMAIN.
  - ALL PROPOSED GRADES ARE TO MEET AND BLEND IN WITH EXISTING GRADING AT PROJECT LIMIT, PROPERTY LINES, BUILDING LINES AND EXISTING CURBS.
  - "ROUND OFF" ALL SHARP RIDGES EXISTING ON SITE WHETHER OR NOT SUCH CONDITIONS ARE INDICATED ON PLANS.
  - NOTIFY THE OWNER'S REPRESENTATIVE TO REVIEW ROUGH GRADES PRIOR TO PLACEMENT OF TOPSOIL; AND FINE GRADING PRIOR TO PLANTING.
  - ALL AREAS SHALL HAVE POSITIVE DRAINAGE TO APPROVED DRAINAGE STRUCTURES OR CONVEYANCES.
  - PROVIDE POSITIVE DRAINAGE AWAY FROM BUILDINGS AT 0.5% SLOPE, MINIMUM.
  - ALL WALKWAYS AND PAVED AREAS SHALL HAVE SMOOTH AND CONTINUOUS ELEVATION CHANGES.
  - SET STRAIGHT GRADES BETWEEN GIVEN ELEVATIONS, UNLESS OTHERWISE INDICATED.
  - PROVIDE 2% MAX. SLOPE, PERPENDICULAR TO DIRECTION OF TRAVEL, ON ALL PAVED PEDESTRIAN SURFACES, UNLESS NOTED OTHERWISE.
  - GRADE BREAK LINES ARE SHOWN GRAPHICALLY TO ILLUSTRATE DRAINAGE PATTERNS AND ARE NOT TO BE INSTALLED AS ACTUAL JOINT LINES, EXCEPT WHERE THEY COINCIDE WITH PAVING JOINTS.
  - INSTALL DRAINS IN PAVING, SQUARE WITH AND ALIGNING TO PAVING JOINTS AS SHOWN.
  - VERIFY IN FIELD THAT AS-BUILT CONDITIONS MATCH PRECISE ELEVATIONS INDICATED ON PLANS.
  - SITE SURVEY WAS PREPARED BY BRH ON 2/11/16. ALL GRADES SHOWN ON THE DRAWINGS ARE BASED UPON THE DATUM ESTABLISHED BY THE SURVEYOR. WALKER MACY ASSUMES NO RESPONSIBILITY FOR ACCURACY OF SURVEYED CONDITIONS AS SHOWN. SURVEY INFORMATION IS PROVIDED FOR REFERENCE ONLY. NOT ALL SURVEYED SPOT ELEVATIONS ARE SHOWN.



**>>>>CAUTION - CALL 811<<<<**  
**UTILITY NOTIFICATION CENTER**  
**BEFORE YOU DIG!**  
**WWW.CALLBEFOREYUODIG.ORG**

NOT LESS THAN 2 OR MORE THAN 10 BUSINESS DAYS PRIOR TO COMMENCING EXCAVATION OR DEMOLITION, SECURE THE SERVICES OF A COMMERCIAL UNDERGROUND UTILITIES LOCATOR SERVICE TO IDENTIFY BELOW-GROUND IMPROVEMENTS THAT MAY NOT BE INDICATED ON THE DRAWINGS. ADDITIONALLY, TO REQUEST ON-SITE UNDERGROUND UTILITY SYSTEMS LOCATES, CALL SPR INSPECTION REQUEST LINE @ (206) 684-7834. REFER TO SECTIONS 02100 & 02120 OF THE SPECIFICATIONS FOR INSTRUCTIONS ON HOW TO PROCEED.

**WALKER MACY**  
 LANDSCAPE ARCHITECTURE  
 1510 9th Ave, Suite 1910  
 Seattle, WA 98101  
 206-462-8874

NO.	REVISION - AS BUILT	DATE
3		
2		
1		

REVIEWED:          PARK ENGINEER          DATE           
 All work done in accordance with the City of Seattle Standard Plans and Specifications in effect on the date shown above, and supplemented by Special Provisions.

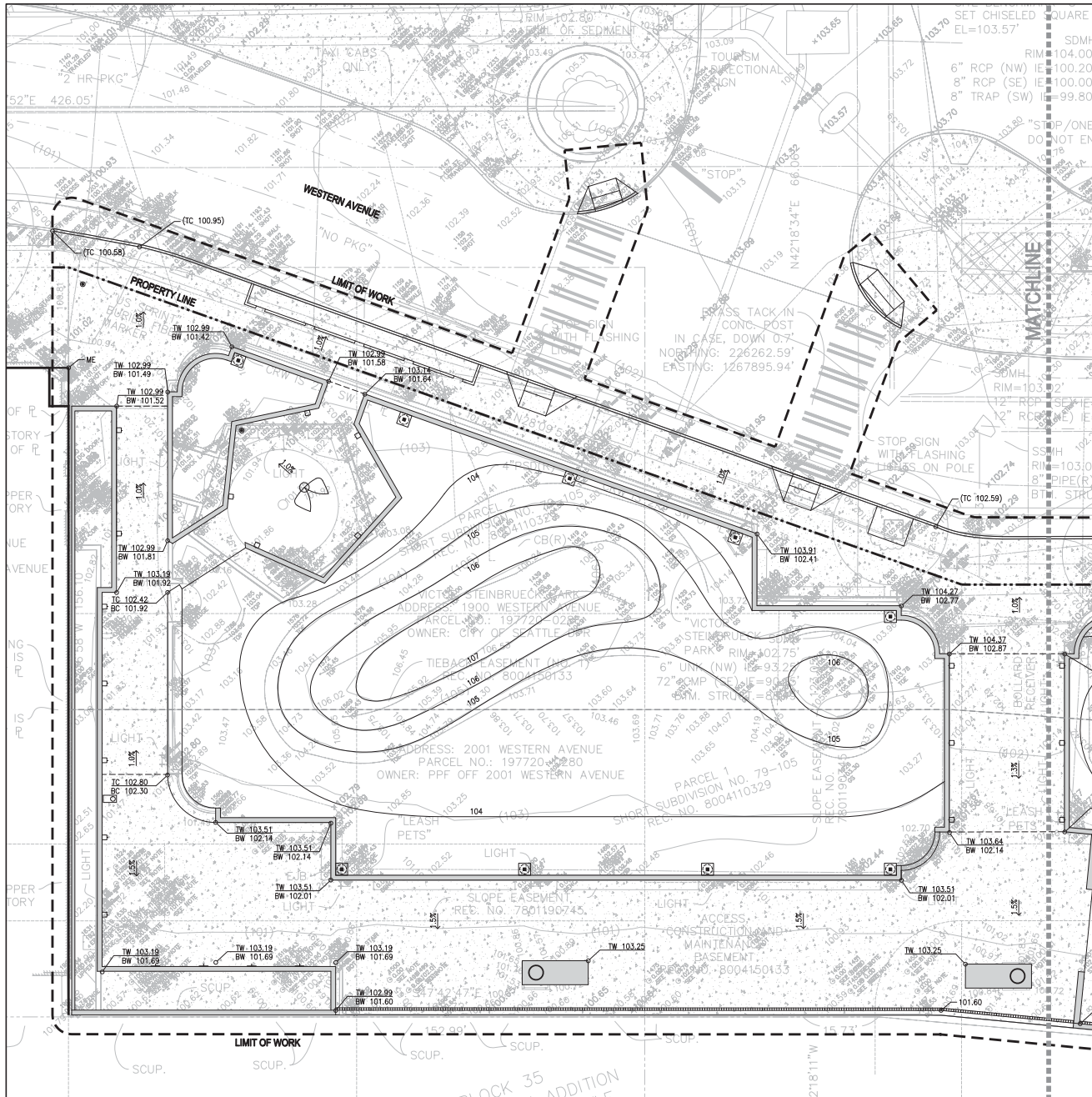


**VICTOR STEINBRUECK PARK**  
**100% SD**

**GRADING PLAN**

DESIGNED	LR/CG	DATE	01/27/2017
DRAWN	CG/NS	SHEET	2 OF 2
CHECKED	n/g		
ORDINANCE NO.	-	<b>L302</b>	
CONTRACT NO.	-		
SCALE			

**NOT FOR CONSTRUCTION**

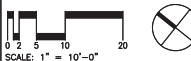


**LEGEND**

- 104 PROPOSED CONTOUR
- (104) EXISTING CONTOUR
- 104.72 PROPOSED SPOT ELEVATION
- (104.70) EXISTING SPOT ELEVATION
- GR GRADE BREAK
- ← FLOW LINE
- MATCH MATCH EXISTING ELEVATION
- 4:1 DIRECTION AND PERCENTAGE OR HV RATIO OF SLOPE
- AD AREA DRAIN
- CB CATCH BASIN
- EA EACH
- FC FLUSH CURB
- FFE FINISH FLOOR ELEVATION
- FG FINISH GRADE
- FL FLOW LINE
- HP HIGH POINT
- HPS HIGH POINT OF SWALE
- LP LOW POINT
- IE INVERT ELEVATION
- BC BOTTOM OF CURB
- TC TOP OF CURB
- BR BOTTOM OF RAMP
- TR TOP OF RAMP
- BS BOTTOM OF STEP
- TS TOP OF STEP
- BW BOTTOM OF WALL (AT FG OF PAVING)
- TW TOP OF WALL
- TD TRENCH DRAIN
- RIM RIM ELEVATION
- R RISER
- T TREAD
- VF VERIFY IN FIELD

**GRADING NOTES**

1. VERIFY ACCURACY OF EXISTING GRADES AND INTERPOLATED ELEVATIONS PRIOR TO BEGINNING WORK. NOTIFY OWNER'S REPRESENTATIVE OF ANY DISCREPANCY PRIOR TO BEGINNING WORK.
2. PROTECT ALL TREES INDICATED TO REMAIN.
3. ALL PROPOSED GRADES ARE TO MEET AND BLEND IN WITH EXISTING GRADING AT PROJECT LIMIT, PROPERTY LINES, BUILDING LINES AND EXISTING CURBS.
4. "ROUND OFF" ALL SHARP RIDGES EXISTING ON SITE WHETHER OR NOT SUCH CONDITIONS ARE INDICATED ON PLANS.
5. NOTIFY THE OWNER'S REPRESENTATIVE TO REVIEW ROUGH GRADES PRIOR TO PLACEMENT OF TOPSOIL; AND FINE GRADING PRIOR TO PLANTING.
6. ALL AREAS SHALL HAVE POSITIVE DRAINAGE TO APPROVED DRAINAGE STRUCTURES OR CONVEYANCES.
7. PROVIDE POSITIVE DRAINAGE AWAY FROM BUILDINGS AT 0.5% SLOPE, MINIMUM.
8. ALL WALKWAYS AND PAVED AREAS SHALL HAVE SMOOTH AND CONTINUOUS ELEVATION CHANGES.
9. SET STRAIGHT GRADES BETWEEN GIVEN ELEVATIONS, UNLESS OTHERWISE INDICATED.
10. PROVIDE 2% MAX. SLOPE, PERPENDICULAR TO DIRECTION OF TRAVEL, ON ALL PAVED PEDESTRIAN SURFACES, UNLESS NOTED OTHERWISE.
11. GRADE BREAK LINES ARE SHOWN GRAPHICALLY TO ILLUSTRATE DRAINAGE PATTERNS AND ARE NOT TO BE INSTALLED AS ACTUAL JOINT LINES, EXCEPT WHERE THEY COINCIDE WITH PAVING JOINTS.
12. INSTALL DRAINS IN PAVING, SQUARE WITH AND ALIGNING TO PAVING JOINTS AS SHOWN.
13. VERIFY IN FIELD THAT AS-BUILT CONDITIONS MATCH PRECISE ELEVATIONS INDICATED ON PLANS.
14. SITE SURVEY WAS PREPARED BY BRH ON 2/11/16. ALL GRADES SHOWN ON THE DRAWINGS ARE BASED UPON THE DATUM ESTABLISHED BY THE SURVEYOR. WALKER MACY ASSUMES NO RESPONSIBILITY FOR ACCURACY OF SURVEYED CONDITIONS AS SHOWN. SURVEY INFORMATION IS PROVIDED FOR REFERENCE ONLY. NOT ALL SURVEYED SPOT ELEVATIONS ARE SHOWN.



**>>>>CAUTION - CALL 811<<<<**  
**UTILITY NOTIFICATION CENTER**  
**BEFORE YOU DIG!**  
[WWW.CALLBEFOREYODIG.ORG](http://WWW.CALLBEFOREYODIG.ORG)

NOT LESS THAN 2 OR MORE THAN 10 BUSINESS DAYS PRIOR TO COMMENCING EXCAVATION OR DEMOLITION, SECURE THE SERVICES OF A COMMERCIAL UNDERGROUND UTILITIES LOCATOR SERVICE TO IDENTIFY BELOW-GROUND IMPROVEMENTS THAT MAY NOT BE INDICATED ON THE DRAWINGS. ADDITIONALLY, TO REQUEST ON-SITE UNDERGROUND UTILITY SYSTEMS LOCATES, CALL SPR INSPECTION REQUEST LINE @ (206) 684-7834. REFER TO SECTIONS 02100 & 02120 OF THE SPECIFICATIONS FOR INSTRUCTIONS ON HOW TO PROCEED.

**WALKER MACY**

LANDSCAPE ARCHITECTURE  
 1510 9th AVE, SUITE 1910  
 SEATTLE, WA 98104  
 206-462-8874

3		
2		
1		
NO.	REVISION - AS BUILT	DATE

REVIEWED:          PARK ENGINEER          DATE           
 All work done in accordance with the City of Seattle Standard Plans and Specifications in effect on the date shown above, and supplemented by Special Provisions.

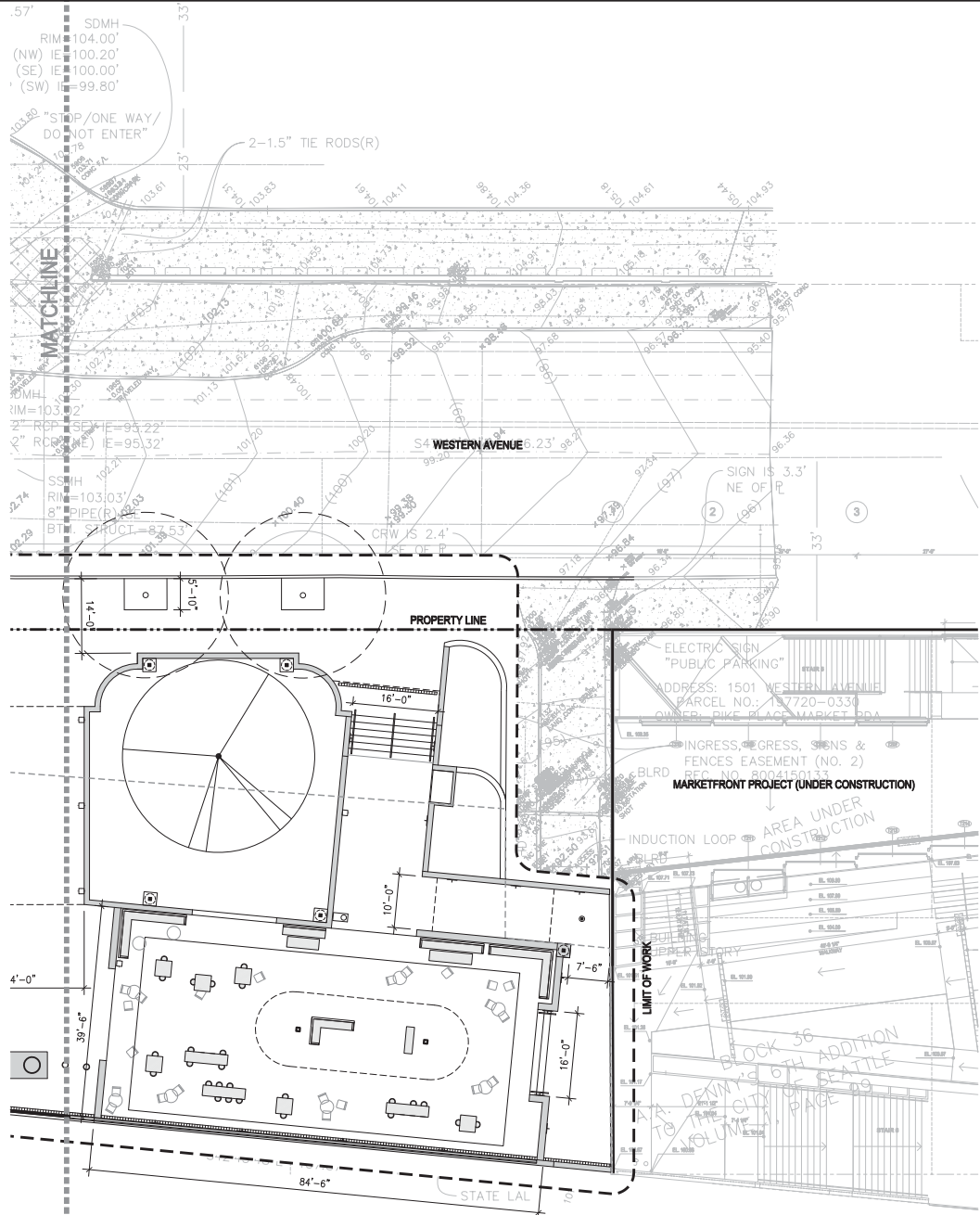


**VICTOR STEINBRUECK PARK**  
**100% SD**

**GRADING PLAN**

DESIGNED	LR/CG	DATE	01/27/2017
DRAWN	CG/NS	SHEET	1 OF 2
CHECKED	n/g		
ORDINANCE NO.	-	<b>L301</b>	
CONTRACT NO.	-		
SCALE			

**NOT FOR CONSTRUCTION**



**LEGEND**

---	BASELINE
---	CENTERLINE
---	EXTENSION OF BUILDING FACE
---	ISOLATION JOINT
---	DOWELLED ISOLATION JOINT
B	BEARING
C	CHORD LENGTH
EQ	EQUAL
L	LENGTH OF CURVE
OC	ON CENTER
POB	POINT OF BEGINNING
PC	POINT OF CURVATURE
PCC	POINT OF COMPOUND CURVATURE
PRC	POINT OF REVERSE CURVATURE
PI	POINT OF INTERSECTION
PT	POINT OF TANGENCY
R	RADIUS
RP	RADIUS CENTER POINT
SP	SPACES
VIF	VERIFY IN FIELD
( )	ALIGN

- LAYOUT NOTES**
- SITE SURVEY WAS PREPARED BY BRH ON 2/11/16. ALL COORDINATES SHOWN ON THE DRAWINGS ARE BASED UPON THE COORDINATE SYSTEM ESTABLISHED BY THE SURVEYOR. WALKER MACY ASSUMES NO RESPONSIBILITY FOR ACCURACY OF SURVEYED CONDITIONS AS SHOWN. SURVEY INFORMATION IS PROVIDED FOR REFERENCE ONLY.
  - DO NOT SCALE FROM THE DRAWINGS. THE LOCATION OF FEATURES NOT SPECIFICALLY DIMENSIONED MAY NOT BE DETERMINED BY SCALE. IF CONFLICTS ARISE IN THE FIELD, CONTACT OWNER'S REPRESENTATIVE FOR RESOLUTION.
  - ALL DIMENSIONS ARE TO THE OUTSIDE FACE OF BUILDINGS AND WALLS OR BACK OF CURBS, UNLESS OTHERWISE NOTED.
  - ALL CURVED OBJECTS SHALL HAVE SMOOTH, CONTINUOUS CURVES WITH CONSISTENT RADI AS INDICATED. EACH CURVE SHALL MEET ADJACENT CURVES OR LINEAR SECTIONS ON THE TANGENT, UNLESS NOTED OTHERWISE.

**>>>>CAUTION - CALL 811<<<<**  
**UTILITY NOTIFICATION CENTER**  
**BEFORE YOU DIG!**  
[WWW.CALLBEFOREYOUTDIG.ORG](http://WWW.CALLBEFOREYOUTDIG.ORG)

NOT LESS THAN 2 OR MORE THAN 10 BUSINESS DAYS PRIOR TO COMMENCING EXCAVATION OR DEMOLITION, SECURE THE SERVICES OF A COMMERCIAL UNDERGROUND UTILITIES LOCATOR SERVICE TO IDENTIFY BELOW-GROUND IMPROVEMENTS THAT MAY NOT BE INDICATED ON THE DRAWINGS. ADDITIONALLY, TO REQUEST ON-SITE UNDERGROUND UTILITY SYSTEMS LOCATES, CALL SPR INSPECTION REQUEST LINE @ (206) 684-7834. REFER TO SECTIONS 02100 & 02120 OF THE SPECIFICATIONS FOR INSTRUCTIONS ON HOW TO PROCEED.

**WALKER MACY**  
 LANDSCAPE ARCHITECTURE  
 1510 9th Ave, Suite 1910  
 SEATTLE, WA 98104  
 206-462-3874

3		
2		
1		
NO.	REVISION - AS BUILT	DATE

REVIEWED: PARK ENGINEER DATE  
 All work done in accordance with the City of Seattle Standard Plans and Specifications in effect on the date shown above, and supplemented by Special Provisions.

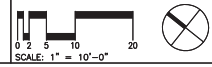


**VICTOR STEINBRUECK PARK**  
 100% SD

**LAYOUT PLAN**

DESIGNED	LR/CG	DATE	01/27/2017
DRAWN	CG/NS	SHEET	2 OF 2
CHECKED	n/g		
ORDINANCE NO.	-		<b>L202</b>
CONTRACT NO.	-		
SCALE			

**NOT FOR CONSTRUCTION**





>>>>CAUTION - CALL 811<<<<  
**UTILITY NOTIFICATION CENTER**  
**BEFORE YOU DIG!**  
 WWW.CALLBEFOREYODIG.ORG

NOT LESS THAN 2 OR MORE THAN 10 BUSINESS DAYS PRIOR TO COMMENCING EXCAVATION OR DEMOLITION, SECURE THE SERVICES OF A COMMERCIAL UNDERGROUND UTILITIES LOCATOR SERVICE TO IDENTIFY BELOW-GROUND IMPROVEMENTS THAT MAY NOT BE INDICATED ON THE DRAWINGS. ADDITIONALLY, TO REQUEST ON-SITE UNDERGROUND UTILITY SYSTEMS LOCATES, CALL SPR INSPECTION REQUEST LINE @ (206) 864-7834. REFER TO SECTIONS 02100 & 02120 OF THE SPECIFICATIONS FOR INSTRUCTIONS ON HOW TO PROCEED.

**WALKER MACY**

LANDSCAPE ARCHITECTURE  
 1510 9th AVE, SUITE 1910  
 SEATTLE, WA 98104  
 206-462-2874

3		
2		
1		
NO.	REVISION - AS BUILT	DATE

REVIEWED: \_\_\_\_\_ PARK ENGINEER \_\_\_\_\_ DATE \_\_\_\_\_  
 All work done in accordance with the City of Seattle Standard Plans and Specifications in effect on the date shown above, and supplemented by Special Provisions.

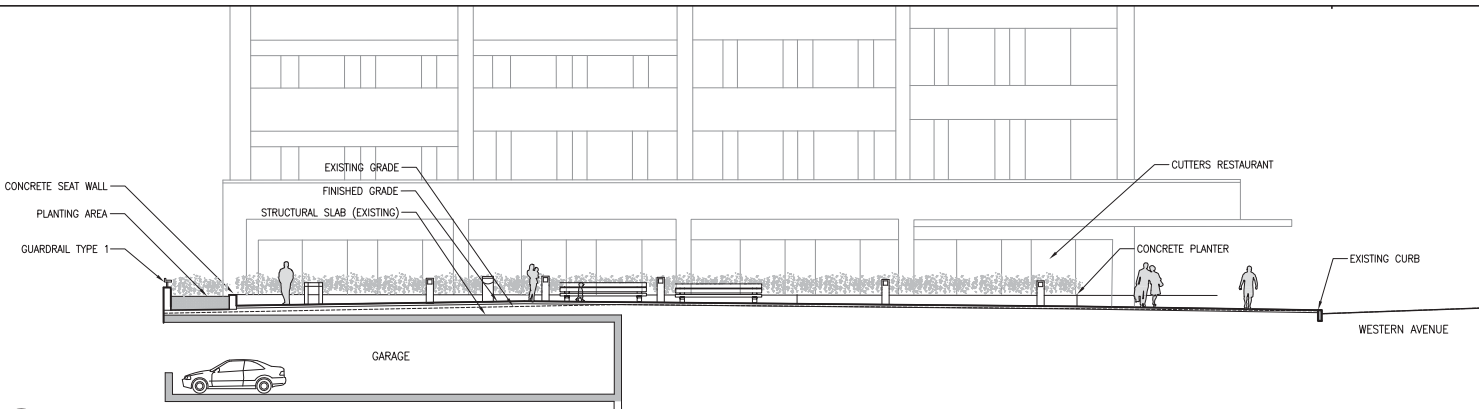


**VICTOR STEINBRUECK PARK**  
**100% SD**

**SECTIONS**

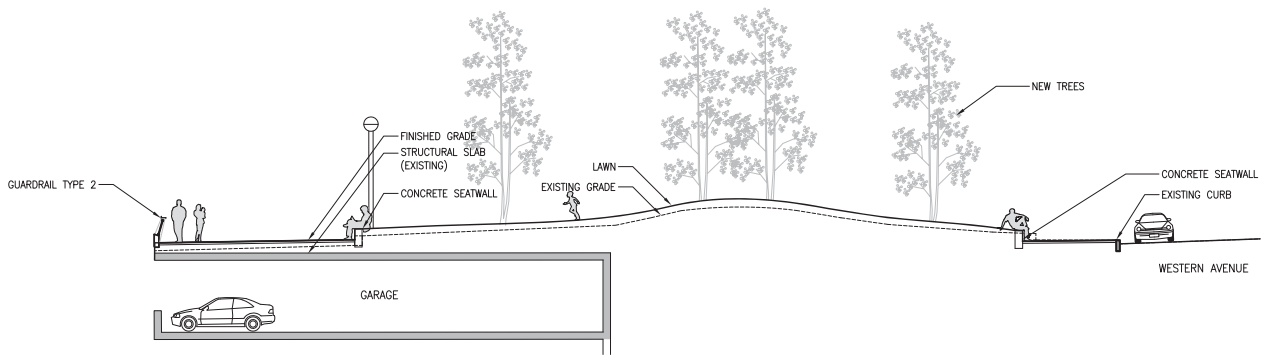
DESIGNED	LR/CG	DATE	01/27/2017
DRAWN	CG/NS	SHEET	1 OF 2
CHECKED	n/g		
ORDINANCE NO.	-	<b>L601</b>	
CONTRACT NO.	-		
SCALE			

NOT FOR CONSTRUCTION



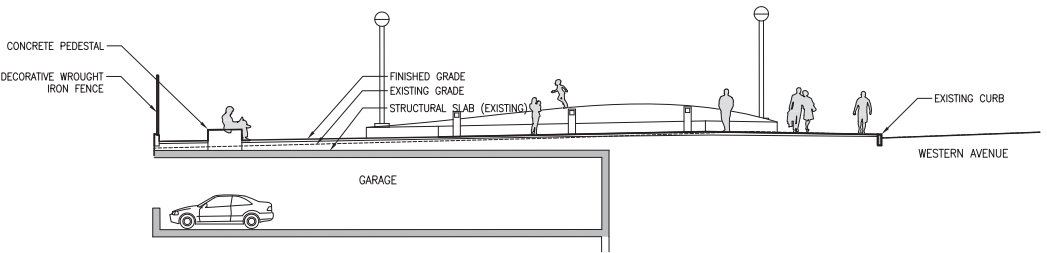
1 SECTION  
 SCALE: 1/8"=1'

SECTION



2 SECTION  
 SCALE: 1/8"=1'

SECTION



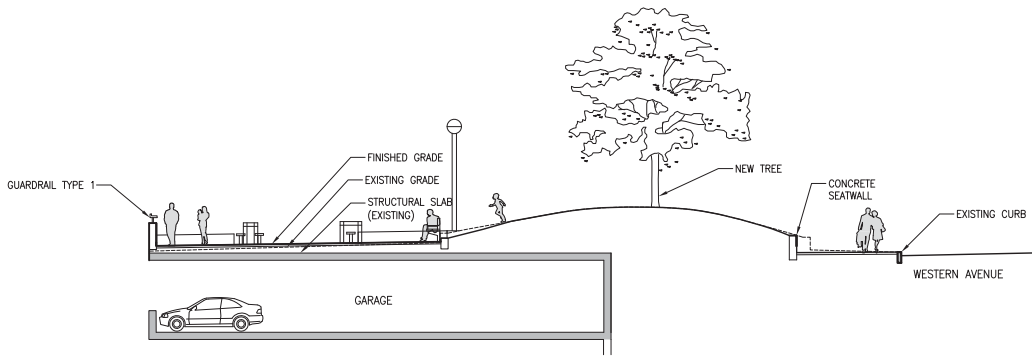
3 SECTION  
 SCALE: 1/8"=1'

SECTION

>>>>CAUTION - CALL 811<<<<  
**UTILITY NOTIFICATION CENTER**  
**BEFORE YOU DIG!**  
 WWW.CALLBEFOREYUODIG.ORG

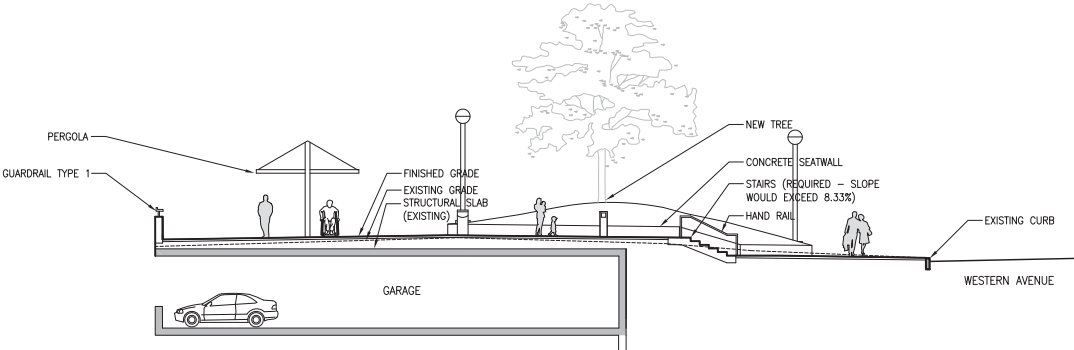
NOT LESS THAN 2 OR MORE THAN 10 BUSINESS DAYS PRIOR TO COMMENCING EXCAVATION OR DEMOLITION, SECURE THE SERVICES OF A COMMERCIAL UNDERGROUND UTILITIES LOCATOR SERVICE TO IDENTIFY BELOW-GROUND IMPROVEMENTS THAT MAY NOT BE INDICATED ON THE DRAWINGS. ADDITIONALLY, TO REQUEST ON-SITE UNDERGROUND UTILITY SYSTEMS LOCATES, CALL SPR INSPECTION REQUEST LINE @ (206) 684-7834. REFER TO SECTIONS 02100 & 02120 OF THE SPECIFICATIONS FOR INSTRUCTIONS ON HOW TO PROCEED.

**WALKER MACY**  
 LANDSCAPE ARCHITECTURE  
 1510 9th AVE, SUITE 1910  
 SEATTLE, WA 98104  
 206-682-3874



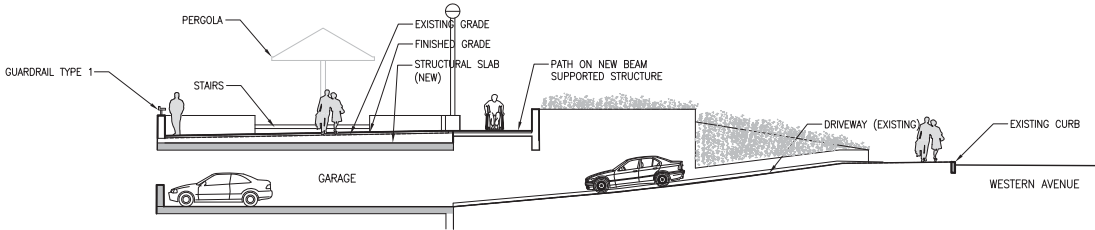
4 SECTION  
 SCALE: 1/8"=1'

SECTION



5 SECTION  
 SCALE: 1/8"=1'

SECTION



6 SECTION  
 SCALE: 1/8"=1'

SECTION

3		
2		
1		
NO.	REVISION - AS BUILT	DATE

REVIEWED: \_\_\_\_\_ PARK ENGINEER \_\_\_\_\_ DATE \_\_\_\_\_  
 All work done in accordance with the City of Seattle Standard Plans and Specifications is subject to the date shown above, and supplemented by Special Provisions.

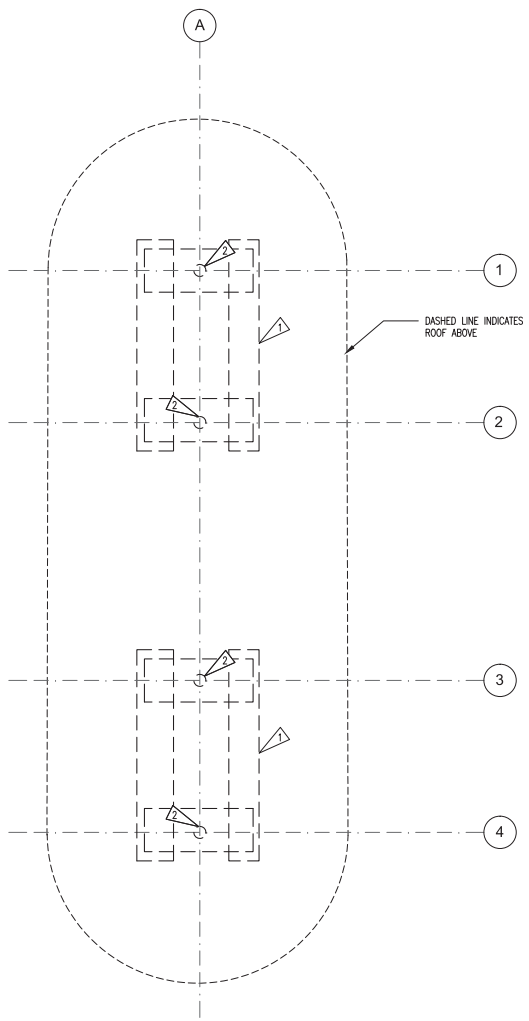


**VICTOR STEINBRUECK**  
**PARK**  
**100% SD**

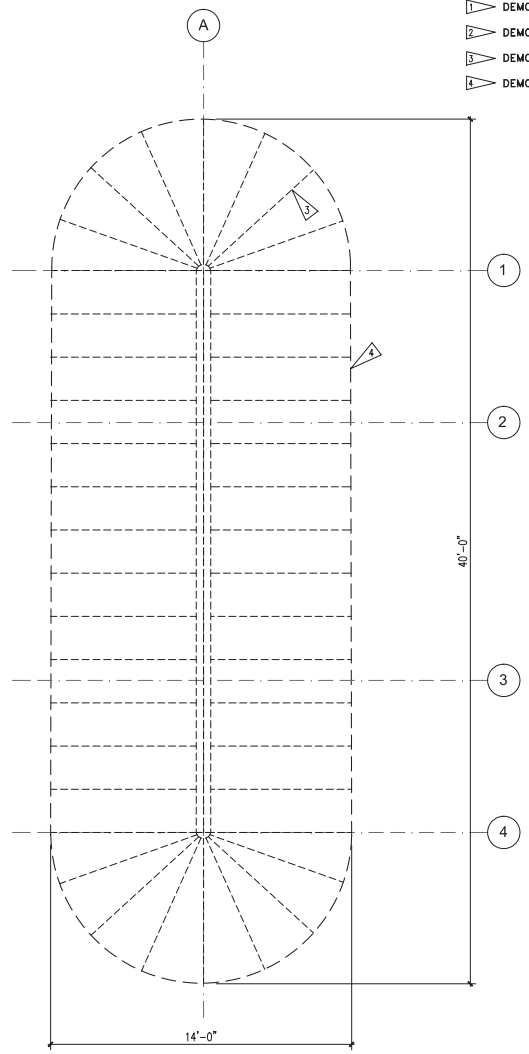
**SECTIONS**

DESIGNED	LR/CG	DATE	01/27/2017
DRAWN	CG/NS	SHEET	2 OF 2
CHECKED	n/g		
ORDINANCE NO.	-		<b>L602</b>
CONTRACT NO.	-		
SCALE			

NOT FOR CONSTRUCTION



**1 DEMO FLOOR PLAN**  
SCALE: 3/8" = 1'-0"



**2 DEMO ROOF PLAN**  
SCALE: 3/8" = 1'-0"



- DEMOLITION PLAN NOTES**
- 1 DEMO & REMOVE (E) CONCRETE BENCHES
  - 2 DEMO & REMOVE (E) STEEL COLUMNS
  - 3 DEMO & REMOVE (E) METAL ROOF & CAP
  - 4 DEMO & REMOVE (E) ROOF STRUCTURE

**>>>>CAUTION - CALL 811<<<<**  
**UTILITY NOTIFICATION CENTER**  
**BEFORE YOU DIG!**  
**WWW.CALLBEFOREYUIDIG.ORG**

NOT LESS THAN 2 OR MORE THAN 10 BUSINESS DAYS PRIOR TO COMMENCING EXCAVATION OR DEMOLITION, SECURE THE SERVICES OF A COMMERCIAL UNDERGROUND UTILITIES LOCATOR SERVICE TO IDENTIFY BELOW-GROUND IMPROVEMENTS THAT MAY NOT BE INDICATED ON THE DRAWINGS. ADDITIONALLY, TO REQUEST ON-SITE UNDERGROUND UTILITY SYSTEMS LOCATES, CALL SPR INSPECTION REQUEST LINE @ (206) 684-7034. REFER TO SECTIONS 02100 & 02130 OF THE SPECIFICATIONS FOR INSTRUCTIONS ON HOW TO PROCEED.

**WALKER MACY**  
LANDSCAPE ARCHITECTURE  
1218 3RD AVE, SUITE 1310  
SEATTLE, WA 98104  
206-469-0374



**PATANO STUDIO ARCHITECTURE**  
403 20TH ST., SUITE 400, SEATTLE, WA 98101  
206-469-0374

3		
2		
1		
NO.	REVISION - AS BUILT	DATE

REVIEWED: \_\_\_\_\_ DATE \_\_\_\_\_  
PARK ENGINEER \_\_\_\_\_ DATE \_\_\_\_\_  
All work done in accordance with the City of Seattle Standard Plans and Specifications in effect on the date shown above, and supplemented by Special Provisions.



**VICTOR STEINBRUECK PARK**  
**100% SD**

**DEMOLITION PLANS**

DESIGNED	CP/EB	DATE	12/29/2016
DRAWN	DL/AS	SHEET	1 OF 4
CHECKED	EB		
ORDINANCE NO.	-		
CONTRACT NO.	-		
SCALE	AS NOTED		

NOT FOR CONSTRUCTION

>>>>CAUTION - CALL 811<<<<  
**UTILITY NOTIFICATION CENTER  
 BEFORE YOU DIG!**  
 WWW.CALLBEFOREYODIG.ORG

NOT LESS THAN 2 OR MORE THAN 10 BUSINESS DAYS PRIOR TO COMMENCING EXCAVATION OR DEMOLITION, SECURE THE SERVICES OF A COMMERCIAL UNDERGROUND UTILITIES LOCATOR SERVICE TO IDENTIFY BELOW-GROUND IMPROVEMENTS THAT MAY NOT BE INDICATED ON THE DRAWINGS. ADDITIONALLY, TO REQUEST ON-SITE UNDERGROUND UTILITY SYSTEMS LOCATES, CALL: SPR INSPECTION REQUEST LINE @ (206) 684-7034. REFER TO SECTIONS 02100 & 02120 OF THE SPECIFICATIONS FOR INSTRUCTIONS ON HOW TO PROCEED.

**WALKER MACY**

LANDSCAPE ARCHITECTURE  
 1218 3RD AVE. SUITE 1310  
 SEATTLE, WA 98104  
 206-465-2474



PATANIO STUDIO ARCHITECTURE  
 403 10TH ST. SUITE 400, SEATTLE, WA 98101  
 TEL: 206-324-0300 WWW.PSARCHITECT.COM

3			
2			
1			
NO.	REVISION	— AS BUILT	DATE

REVIEWED: \_\_\_\_\_ DATE \_\_\_\_\_  
 PARK ENGINEER \_\_\_\_\_ DATE \_\_\_\_\_  
 All work done in accordance with the City of Seattle Standard Plans and Specifications in effect on the date shown above, and supplemented by Special Provisions.

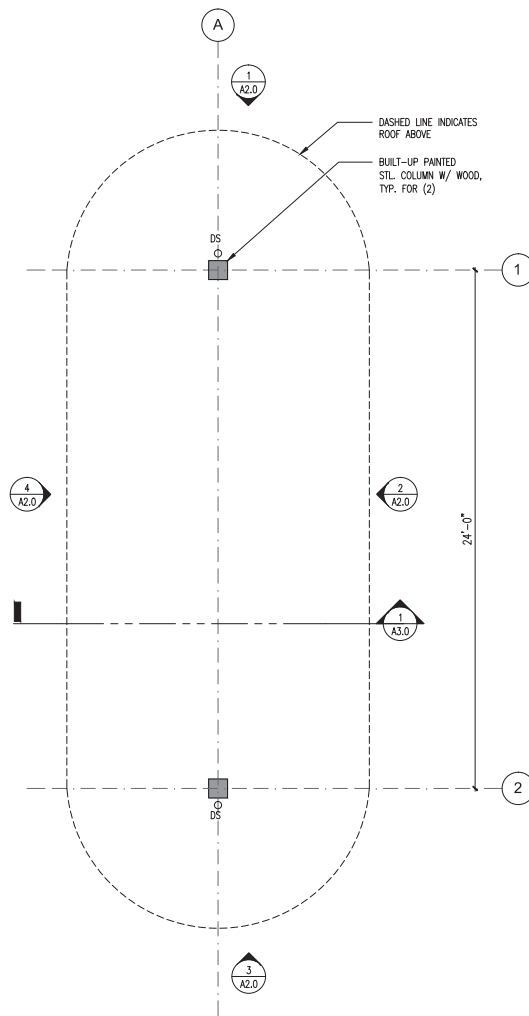


**VICTOR STEINBRUECK  
 PARK  
 100% SD**

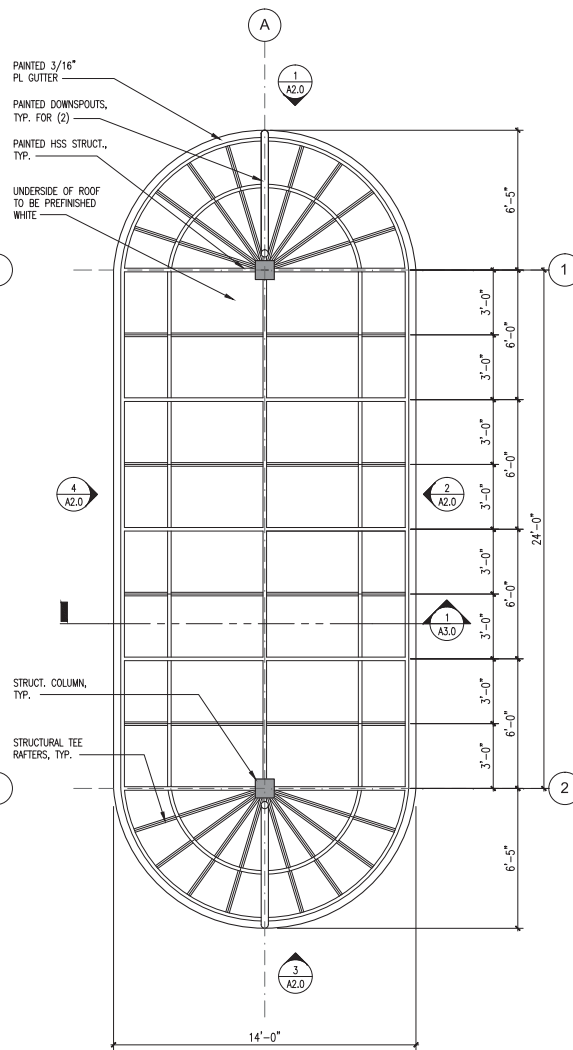
**PLANS**

DESIGNED	CP/EB	DATE	12/29/2016
DRAWN	DL/AS		
CHECKED	EB	SHEET	2 OF 4
ORDINANCE NO.	—		<b>A100</b>
CONTRACT NO.	—		
SCALE	AS NOTED		

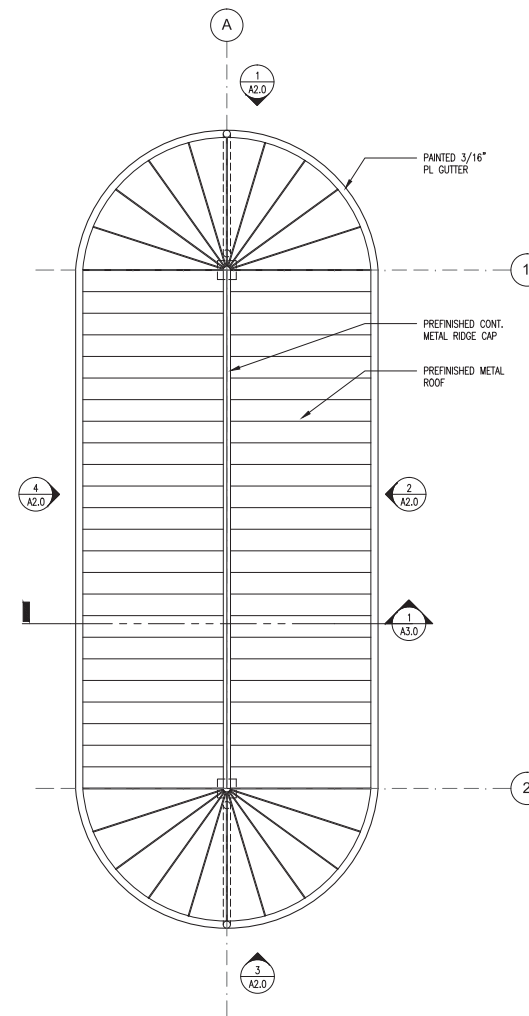
NOT FOR CONSTRUCTION



**1 FLOOR PLAN**  
 SCALE: 3/8" = 1'-0"

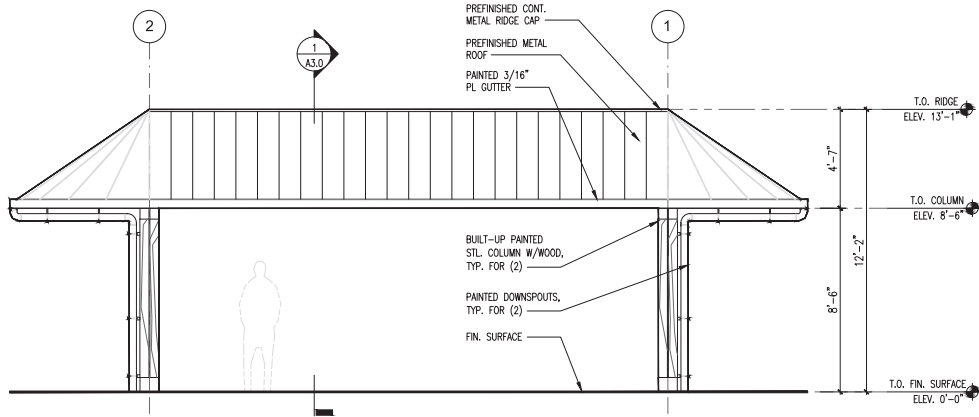


**2 RCP PLAN**  
 SCALE: 3/8" = 1'-0"

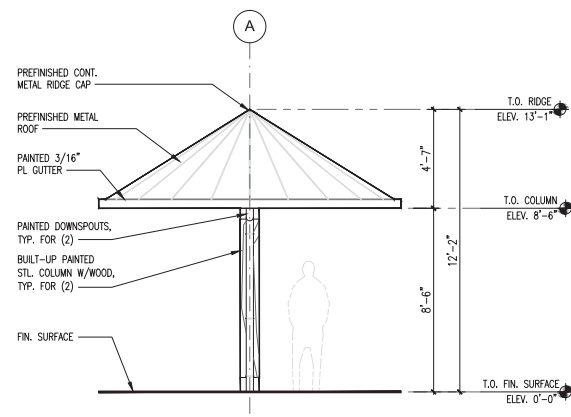


**3 ROOF PLAN**  
 SCALE: 3/8" = 1'-0"

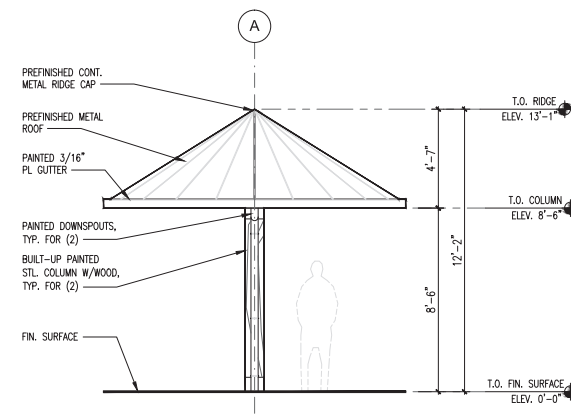




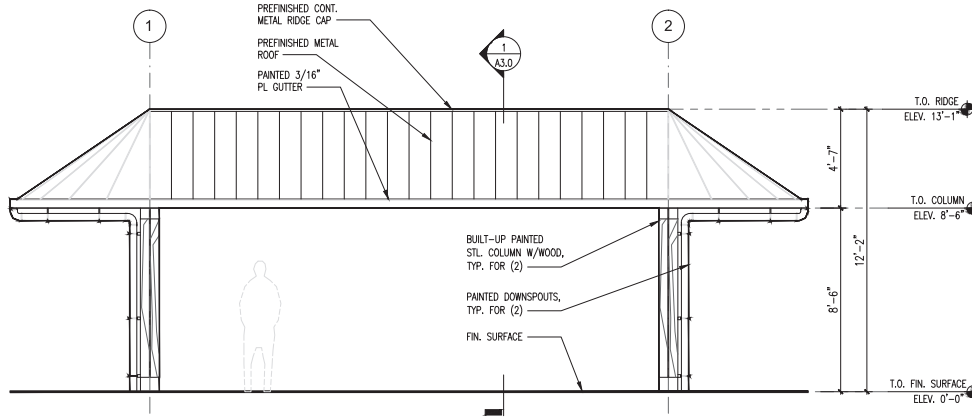
1 EAST ELEVATION  
SCALE: 3/8" = 1'-0"



2 NORTH ELEVATION  
SCALE: 3/8" = 1'-0"



3 SOUTH ELEVATION  
SCALE: 3/8" = 1'-0"



4 WEST ELEVATION  
SCALE: 3/8" = 1'-0"

>>>>CAUTION - CALL 811<<<<  
UTILITY NOTIFICATION CENTER  
BEFORE YOU DIG!  
WWW.CALLBEFOREYOUTDIG.ORG

NOT LESS THAN 2 OR MORE THAN 10 BUSINESS DAYS PRIOR TO COMMENCING EXCAVATION OR DEMOLITION, SECURE THE SERVICES OF A COMMERCIAL UNDERGROUND UTILITIES LOCATOR SERVICE TO IDENTIFY BELOW-GROUND IMPROVEMENTS THAT MAY NOT BE INDICATED ON THE DRAWINGS. ADDITIONALLY, TO REQUEST ON-SITE UNDERGROUND UTILITY SYSTEMS LOCATES, CALL SPR INSPECTION REQUEST LINE @ (206) 684-7034. REFER TO SECTIONS 02100 & 02120 OF THE SPECIFICATIONS FOR INSTRUCTIONS ON HOW TO PROCEED.

**WALKER MACY**  
LANDSCAPE ARCHITECTURE  
1218 3RD AVE. SUITE 1310  
SEATTLE, WA 98104  
206-465-2474



PATANO STUDIO ARCHITECTURE  
803 15TH ST. SUITE 400, SEATTLE, WA 98101  
TEL: 206-324-0100 | WWW.PATANO.COM

3		
2		
1		
NO.	REVISION	DATE

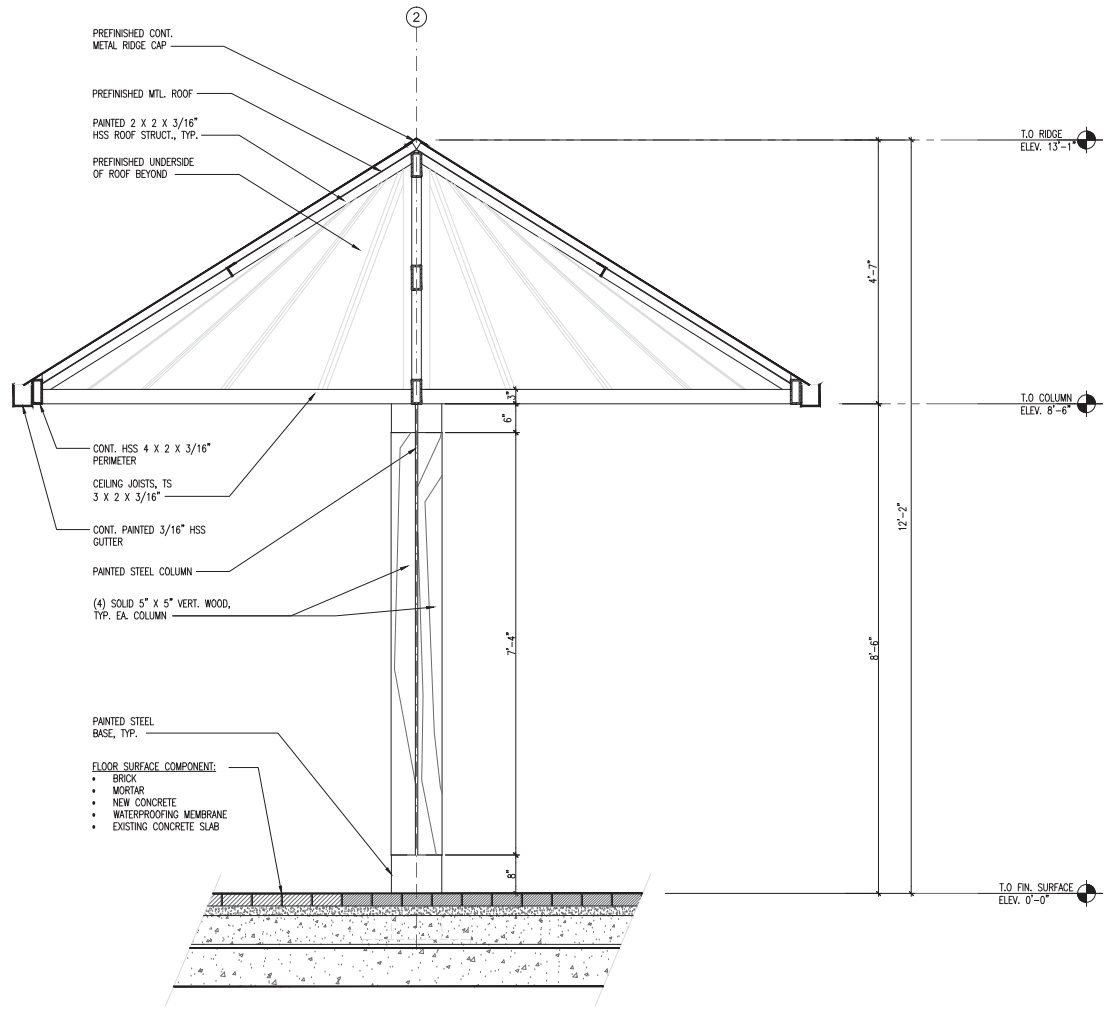
REVIEWED: \_\_\_\_\_ DATE \_\_\_\_\_  
PARK ENGINEER \_\_\_\_\_ DATE \_\_\_\_\_  
All work done in accordance with the City of Seattle Standard Plans and Specifications in effect on the date shown above, and supplemented by Special Provisions.



**VICTOR STEINBRUECK  
PARK  
100% SD**

<b>ELEVATIONS</b>	
DESIGNED CP/EB	DATE 12/29/2016
DRAWN DL/AS	SHEET 3 OF 4
CHECKED EB	
ORDINANCE NO. -	<b>A200</b>
CONTRACT NO. -	
SCALE AS NOTED	

NOT FOR CONSTRUCTION



**1 SECTION**  
SCALE: 1" = 1'-0"

**>>>>CAUTION - CALL 811<<<<**  
**UTILITY NOTIFICATION CENTER**  
**BEFORE YOU DIG!**  
**WWW.CALLBEFOREYOU.DIG.ORG**

NOT LESS THAN 2 OR MORE THAN 10 BUSINESS DAYS PRIOR TO COMMENCING EXCAVATION OR DEMOLITION, SECURE THE SERVICES OF A COMMERCIAL UNDERGROUND UTILITIES LOCATOR SERVICE TO IDENTIFY BELOW-GROUND IMPROVEMENTS THAT MAY NOT BE INDICATED ON THE DRAWINGS. ADDITIONALLY, TO REQUEST ON-SITE UNDERGROUND UTILITY SYSTEMS LOCATES, CALL SPR INSPECTION REQUEST LINE @ (206) 684-7034. REFER TO SECTIONS 02100 & 02130 OF THE SPECIFICATIONS FOR INSTRUCTIONS ON HOW TO PROCEED.

**WALKER MACY**  
LANDSCAPE ARCHITECTURE  
1218 3RD AVE. SUITE 1310  
SEATTLE, WA 98104  
206.469.0284



**PATANO STUDIO ARCHITECTURE**  
803 1ST AVE. SUITE 400, SEATTLE, WA 98101  
TEL: 206.324.0100 | WWW.PATANOARCHITECTURE.COM

3		
2		
1		
NO.	REVISION - AS BUILT	DATE

REVIEWED: \_\_\_\_\_ DATE \_\_\_\_\_  
PARK ENGINEER \_\_\_\_\_ DATE \_\_\_\_\_  
All work done in accordance with the City of Seattle Standard Plans and Specifications in effect on the date shown above, and supplemented by Special Provisions.



**VICTOR STEINBRUECK PARK**  
**100% SD**  
**SECTION**

DESIGNED	CP/EB	DATE	12/29/2016
DRAWN	DL/AS		
CHECKED	EB	SHEET	4 OF 4
ORDINANCE NO.	-		<b>A300</b>
CONTRACT NO.	-		
SCALE	AS NOTED		

NOT FOR CONSTRUCTION

product image	tag	application	basis of design	rough dimension	lamp	W	V	control	mounting	finish	notes
	51	Pedestrian Foot 360-Distribution for general ambient illumination along the street and lean promenades	Gamma Lighting Warner 45W	454 mm ø 553 mm H	LED 3000K 4275 lm	45	12 DC	dim to 50% after hours	post top	black as standard	IP65 / CCT and CRI to be custom Step down transformer required at base
	52	Bollard (outdoor) Wide Distribution for general illumination along pedestrian walkways	ERCO Lightmark Floor Washlight 34703 023	7 5/8" W 6 7/8" H 3 3/4" D	LED 3000K 630 lm	8	120	dim to 50% after hours	recessed in custom bollard	black as standard	IP65 / CRI >90 May require housing and mounting clips TBD Bollard detail by Landscape Architect, TBD
	53a	In-wall Wide Distribution Floor Washlight for general illumination along pedestrian walkways	ERCO Lightmark Floor Washlight 34703 023	7 5/8" W 6 7/8" H 3 3/4" D	LED 3000K 630 lm	8	120	dim to 50% after hours	recessed in custom bollard	black as standard	IP65 / CRI >90 Will require concrete housing and mounting clips Wall recess detail by Landscape Architect, TBD
	53	Bollard (outdoor) Deep Distribution for general illumination along pedestrian walkways	ERCO Lightmark Floor Washlight 34705 023	7 5/8" W 6 7/8" H 3 3/4" D	LED 3000K 630 lm	8	120	dim to 50% after hours	recessed in custom bollard	black as standard	IP65 / CRI >90 Will require concrete housing and mounting clips TBD Bollard detail by Landscape Architect, TBD
	53a	In-wall Deep Distribution Floor Washlight for general illumination along pedestrian walkways	ERCO Lightmark Floor Washlight 34705 023	7 5/8" W 6 7/8" H 3 3/4" D	LED 3000K 630 lm	8	120	dim to 50% after hours	recessed in custom bollard	black as standard	IP65 / CRI >90 Will require concrete housing and mounting clips Wall recess detail by Landscape Architect, TBD
	54	Linear LED Low Output Long Run Exterior Tape for low level marker light along railing curb edge	VOLT Long Distance LED Rubber Coated MJK-RC-24V	13mm W 3mm H length as shown on drawings	LED 3000K 162 lm per ft	1.5	24 DC	remote dimmer switched	recessed in curb detail	nil	IP65 / CRI >85 120° beam angle Curb cow detail by Landscape Architect, TBD
	55	Linear LED Low Output Exterior Tape for volumetric uplight at shelter canopy	VOLT Low Output LED Rubber Coated PL3K-RC-24V	11mm W 3mm H lengths as shown on drawings	LED 3000K 160 lm per ft	2.35	24 DC	remote dimmer switched	surface to top of joints in shelter	nil	IP65 / CRI >90 120° beam angle Mounting detail TBD
	56	Surface Mount Caged Bulkhead for general illumination within shelter space	Bim Light Electric The Bullet F-T00-FC-075-FM-BB-LED	4 3/4" ø 9 1/4" H	LED 3000K 1000 lm	16.8	120	integral dimmer switched	surface to central beam of shelter	galvanized as standard	UL Wet rated Flashed vapor proof glass * request custom CCT

**General NOTES:**

- All luminaires are to be IP65+ / UL Wet Location rated unless otherwise specified.
- All luminaires to have minimum manufacturer's 5 year warranty.
- All luminaire finish colors to be confirmed by architect prior to purchase.
- All fixtures will be LED unless otherwise specified.

*All fixture quantities currently shown on drawings may change due to design alternations, or calculation results.*

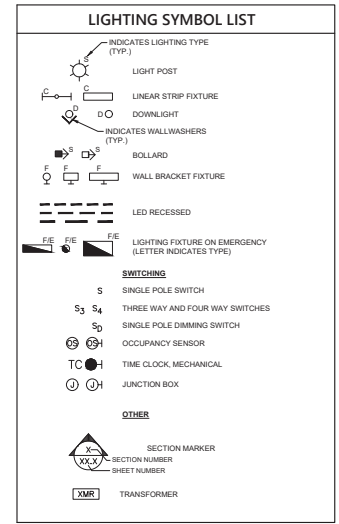
All electrical equipment and accessories to be installed using NEMA rated enclosures.

All fixture heights noted as "above grade".

Any alternates must be submitted for approval prior to purchase.

### ABBREVIATIONS

AB	ABOVE CEILING
AC	ABOVE COUNTER
AF	ABOVE FINISHED FLOOR
AFG	ABOVE FINISHED GRADE
ARCH	ARCHITECT
BLOC	BUILDING
DWG	DRAWING
DN	DOWN
(E)	EXISTING TO REMAIN
EC	ELECTRICAL CONTRACTOR
(ER)	EXISTING TO BE RELOCATED
GC	GENERAL CONTRACTOR
LP	LIGHTING PANEL
LTG	LIGHTING
(ME)	MODIFY EXISTING
MISC	MISCELLANEOUS
MTD	MOUNTED
MTG	MOUNTING
(N)	NEW
N/A	NOT APPLICABLE
NEC	NATIONAL ELECTRICAL CODE
NIC	NOT IN CONTRACT
NL	NIGHT LIGHT
#	NUMBER
NTS	NOT TO SCALE
(R)	REMOVE
(RE)	RELOCATED EXISTING
(RR)	REMOVE & REPLACE
REC	RECESSED
TYP	TYPICAL
V	VOLT
W	WATT
WP	WEATHERPROOF
WR	WEATHER RESISTANT
*	INDICATES MOUNTED ABOVE CENTER OR AS NOTED ON DWG.
#1LP100	DETAIL NUMBER/DRAWING NUMBER



### NOTE

THIS IS A STANDARD LEGEND SHEET. THEREFORE, SOME SYMBOLS AND ABBREVIATIONS MAY APPEAR ON THIS SHEET THAT DO NOT APPEAR ON THE DRAWINGS.

### DRAWING SCHEDULE

DRAWING NUMBER	DRAWING TITLE	ISSUE	DATE
EL000	LUMINAIRE SCHEDULE AND LIGHTING NOTES	SCHEMATIC DESIGN	01/27/2017
EL101	LIGHTING LEVEL P3 REFLECTED CEILING PLAN		
EL102	LIGHTING LEVEL P2 REFLECTED CEILING PLAN		

**>>>>CAUTION - CALL 811<<<<**  
**UTILITY NOTIFICATION CENTER BEFORE YOU DIG!**  
**WWW.CALLBEFOREYUODIG.ORG**

NOT LESS THAN 2 OR MORE THAN 10 BUSINESS DAYS PRIOR TO COMMENCING EXCAVATION OR DEMOLITION, SECURE THE SERVICES OF A COMMERCIAL UNDERGROUND UTILITIES LOCATOR SERVICE TO IDENTIFY BELOW-GROUND IMPROVEMENTS THAT MAY NOT BE INDICATED ON THE DRAWINGS. ADDITIONALLY, TO REQUEST ON-SITE UNDERGROUND UTILITY SYSTEMS LOCATES, CALL SPR INSPECTION REQUEST LINE @ (206) 864-7034. REFER TO SECTIONS 02100 & 02120 OF THE SPECIFICATIONS FOR INSTRUCTIONS ON HOW TO PROCEED.

**WALKER MACY**  
 LANDSCAPE ARCHITECTURE  
 1218 3RD AVE. SUITE 1310  
 SEATTLE, WA 98104  
 206-462-2874



NO.	REVISION - AS BUILT	DATE
3		
2		
1		

**REVIEWED:** \_\_\_\_\_ **PARK ENGINEER** \_\_\_\_\_ **DATE** \_\_\_\_\_

All work done in accordance with the City of Seattle Standard Plans and Specifications in effect on the date shown above, and supplemented by Special Provisions.

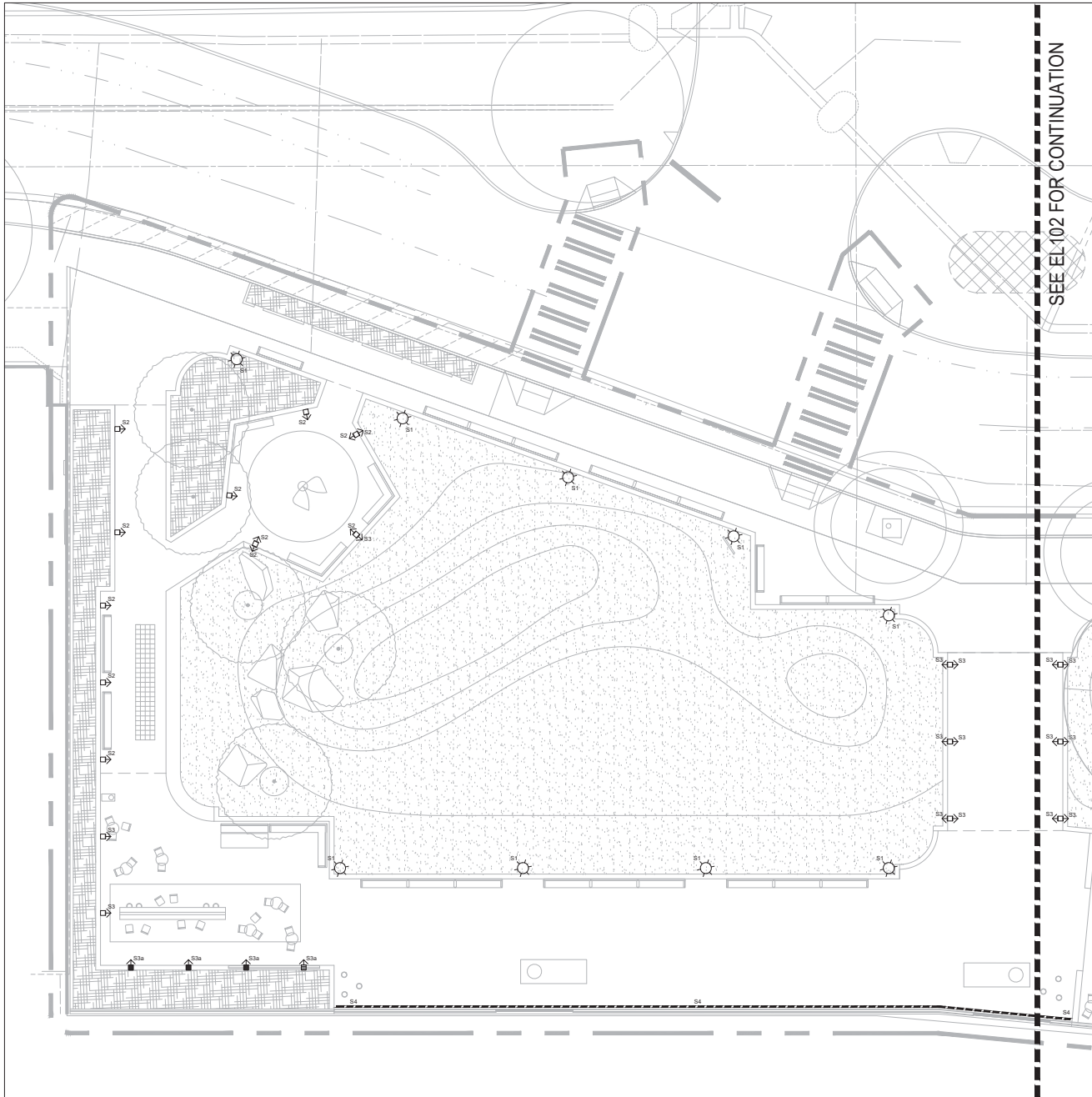


**VICTOR STEINBRUECK PARK**  
**100% SD**

**LUMINAIRE SCHEDULE AND LIGHTING NOTES**

DESIGNED DR	DATE 01/27/2017
DRAWN LEG	SHEET 1 of 1
CHECKED DR	
ORDINANCE NO.	<b>EL000</b>
CONTRACT NO.	
SCALE AS NOTED	

NOT FOR CONSTRUCTION



SEE EL102 FOR CONTINUATION

- LIGHTING SHEET NOTES:**
1. ALL TYPE S1 TO BE MOUNTED ON EXISTING POSTS. ANY ADDITIONAL POSTS TO MATCH EXISTING.
  2. ALL TYPE S2 AND TYPE S3 TO BE MOUNTED IN BOLLARD HOUSING AT 36" AFF TO TOP OF FIXTURE.
  3. ALL TYPE S2A AND TYPE S3A TO BE RECESSED IN WALL AT 18" AFF TO CENTER OF FIXTURE FACE.
  4. TYPE S4 TO BE RECESSED IN RAILING CURB WITHIN ARCHITECTURAL DETAIL BY ARCHITECT.
  5. TYPE S5 TO BE MOUNTED ON TOP FACE OF JOISTS INSIDE SHELTER, AIMED UPWARD.

**>>>>CAUTION - CALL 811<<<<**  
**UTILITY NOTIFICATION CENTER**  
**BEFORE YOU DIG!**  
**WWW.CALLBEFOREYOUDIG.ORG**

NOT LESS THAN 2 OR MORE THAN 10 BUSINESS DAYS PRIOR TO COMMENCING EXCAVATION OR DEMOLITION, SECURE THE SERVICES OF A COMMERCIAL UNDERGROUND UTILITIES LOCATOR SERVICE TO IDENTIFY BELOW-GROUND IMPROVEMENTS THAT MAY NOT BE INDICATED ON THE DRAWINGS. ADDITIONALLY, TO REQUEST ON-SITE UNDERGROUND UTILITY SYSTEMS LOCATES, CALL SPR INSPECTION REQUEST LINE @ (206) 864-7034. REFER TO SECTIONS 02100 & 02120 OF THE SPECIFICATIONS FOR INSTRUCTIONS ON HOW TO PROCEED.

**WALKER MACY**  
 LANDSCAPE ARCHITECTURE  
 1218 3RD AVE. SUITE 1310  
 SEATTLE, WA 98104  
 206-882-2874



NO.	REVISION - AS BUILT	DATE
3		
2		
1		

**REVIEWED:** \_\_\_\_\_ **PARK ENGINEER** \_\_\_\_\_ **DATE** \_\_\_\_\_

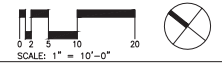
All work done in accordance with the City of Seattle Standard Plans and Specifications in effect on the date shown above, and supplemented by Special Provisions.



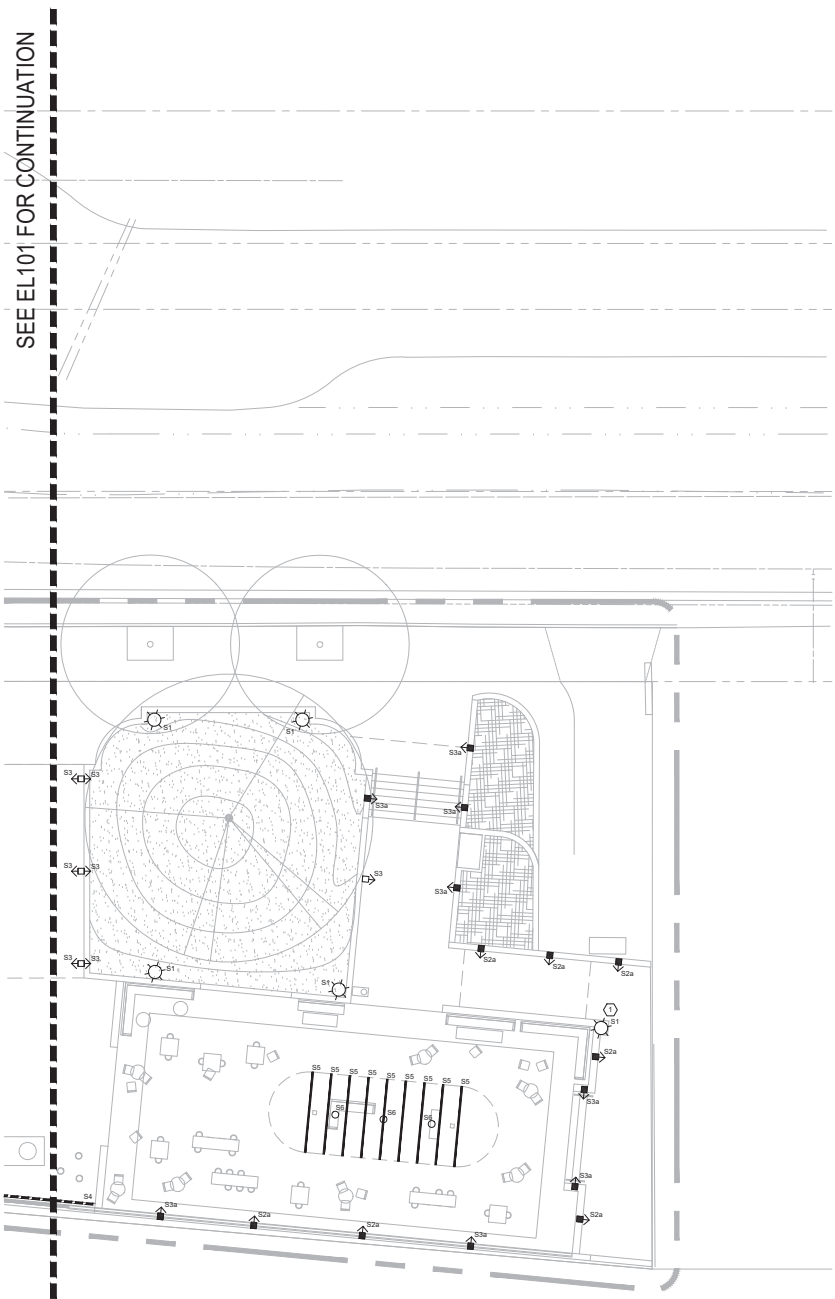
NOT FOR CONSTRUCTION

**VICTOR STEINBRUECK PARK**  
**100% SD**  
**LIGHTING SITE PLAN - NORTH**

DESIGNED DR	DATE 01/27/2017
DRAWN LEG	SHEET 1 OF 2
CHECKED DR	
ORDINANCE NO.	<b>EL101</b>
CONTRACT NO.	
SCALE AS NOTED	







SEE EL101 FOR CONTINUATION

- LIGHTING SHEET NOTES:**
1. ALL TYPE S1 TO BE MOUNTED ON EXISTING POSTS UNLESS NOTED OTHERWISE. ANY ADDITIONAL POSTS TO MATCH EXISTING.
  2. ALL TYPE S2 AND TYPE S3 TO BE MOUNTED IN BOLLARD HOUSING AT 8" AFF TO TOP OF FIXTURE.
  3. ALL TYPE S2A AND TYPE S3A TO BE RECESSED IN WALL AT 1" AFF TO CENTER OF FIXTURE FACE.
  4. TYPE S4 TO BE RECESSED IN RAILING CURB WITHIN ARCHITECTURAL DETAIL BY ARCHITECT.
  5. TYPE S5 TO BE MOUNTED ON TOP FACE OF JOISTS INSIDE SHELTER, AIMED UPWARD.
- KEYED NOTES:**
- ① TYPE S1 AT THIS LOCATION TO BE MOUNTED ON WALL MOUNTING AND INTEGRATION DETAIL BY LANDSCAPE ARCHITECT.

>>>>CAUTION - CALL 811<<<<  
**UTILITY NOTIFICATION CENTER  
 BEFORE YOU DIG!**

**WWW.CALLBEFOREYOU DIG.ORG**  
 NOT LESS THAN 2 OR MORE THAN 10 BUSINESS DAYS PRIOR TO COMMENCING EXCAVATION OR DEMOLITION, SECURE THE SERVICES OF A COMMERCIAL UNDERGROUND UTILITIES LOCATOR SERVICE TO IDENTIFY BELOW-GROUND IMPROVEMENTS THAT MAY NOT BE INDICATED ON THE DRAWINGS. ADDITIONALLY, TO REQUEST ON-SITE UNDERGROUND UTILITY SYSTEMS LOCATES, CALL SPR INSPECTION REQUEST LINE @ (206) 864-7034. REFER TO SECTIONS 02100 & 02120 OF THE SPECIFICATIONS FOR INSTRUCTIONS ON HOW TO PROCEED.

**WALKER MACY**  
 LANDSCAPE ARCHITECTURE  
 1318 3RD AVE. SUITE 1310  
 SEATTLE, WA 98104  
 206-462-2874



3		
2		
1		
NO.	REVISION - AS BUILT	DATE

**REVIEWED:** \_\_\_\_\_ DATE \_\_\_\_\_  
 \_\_\_\_\_ PARK ENGINEER

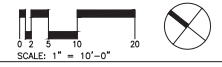
All work done in accordance with the City of Seattle Standard Plans and Specifications in effect on the date shown above, and supplemented by Special Provisions.



**VICTOR STEINBRUECK  
 PARK  
 100% SD**

**LIGHTING SITE PLAN -  
 SOUTH**

DESIGNED DR	DATE 01/27/2017
DRAWN LEG	SHEET 2 of 2
CHECKED DR	
ORDINANCE NO.	EL102
CONTRACT NO.	
SCALE AS NOTED	



NOT FOR CONSTRUCTION

**ID 1: "WELCOME" AND "THANK YOU" TEXT**

**DESCRIPTION:**  
 "WELCOME" AND "THANK YOU" IN ENGLISH AND COAST SALISH. LETTERS ETCHED INTO CONCRETE OR CAST INTO CONCRETE 1'X12' AREA, EACH LOCATION  
**LOCATIONS:**  
 AS SHOWN ON DRAWINGS AND DESCRIBED BELOW  
 WELCOME - VERTICAL FACE OF WALL  
 THANK YOU - TOP OF STEP



>>>>CAUTION - CALL 811<<<<  
**UTILITY NOTIFICATION CENTER BEFORE YOU DIG!**  
 WWW.CALLBEFOREYOU.DIG.ORG

NOT LESS THAN 2 OR MORE THAN 10 BUSINESS DAYS PRIOR TO COMMENCING EXCAVATION OR DEMOLITION, SECURE THE SERVICES OF A COMMERCIAL UNDERGROUND UTILITIES LOCATOR SERVICE TO IDENTIFY BELOWGROUND IMPROVEMENTS THAT MAY NOT BE INDICATED ON THE DRAWINGS. ADDITIONALLY, TO REQUEST ON-SITE UNDERGROUND UTILITY SYSTEMS LOCATES, CALL SFR INSPECTION REQUEST LINE @ (206) 624-7104. REFER TO SECTIONS 02100 & 02120 OF THE SPECIFICATIONS FOR INSTRUCTIONS ON HOW TO PROCEED.

**ID 2: COAST SALISH PEOPLES MAP**

**DESCRIPTION:**  
 CAST BRONZE OR CAST IRON PUGET SOUND MAP OF COAST SALISH PEOPLES PLAQUE, CAST INTO CONCRETE PEDESTAL  
**LOCATIONS:**  
 AS SHOWN ON DRAWINGS AND DESCRIBED ABOVE



**WALKER | MACY**  
 LANDSCAPE ARCHITECTURE  
 1218 2ND AVE. SUITE 1210  
 SEATTLE, WA 98104  
 206-582-1874

**JONES | JONES**  
 ARCHITECTS  
 LANDSCAPE ARCHITECTS  
 PLANNERS  
 188 SOUTH MAIN STREET  
 SUITE 300  
 SEATTLE, WA 98104  
 206 424 5742  
 WWW.JONESJONES.COM

**ID 3: TOTEM POLES INTERPRETIVE TEXT PLAQUE**

**DESCRIPTION:**  
 CAST BRONZE OR CAST IRON PLAQUE OF INTERPRETIVE TEXT TELLING THE STORY AND MEANING OF THE TOTEM POLES, CAST INTO CONCRETE PEDESTAL  
**LOCATIONS:**  
 AS SHOWN ON DRAWINGS AND DESCRIBED ABOVE

Comprehend the story of the totem poles. Address the questions and use the story to guide your conversation. Some tips for reading a totem pole: Totem poles are made of cedar or other local trees in the Northwest and are often found near to the homes of the people who made them. They are often found in the homes of the people who made them. They are often found in the homes of the people who made them. They are often found in the homes of the people who made them.

**ID 4: TOTEM POLES PEDESTAL PATTERN**

**DESCRIPTION:**  
 COAST SALISH PATTERN CAST INTO CONCRETE; 6" AROUND EACH PEDESTAL  
**LOCATIONS:**  
 AS SHOWN ON DRAWINGS AND DESCRIBED ABOVE



3			
2			
1			
NO.	REVISION	AS BUILT	DATE

**ID5: PERGOLA COLUMNS**

**DESCRIPTION:**  
 NATIVE PATTERN LASER CUT METAL WRAP AROUND COLUMNS, MECHANICALLY FASTENED OR HAND-ADDED CEDAR PANELS, MECHANICALLY FASTENED  
**LOCATIONS:**  
 AS SHOWN ON DRAWINGS AND DESCRIBED BELOW  
 ENTIRE LENGTH OF EACH OF THE 2 PERGOLA COLUMNS



**REVIEWED:** \_\_\_\_\_ **PARK ENGINEER** \_\_\_\_\_ **DATE** \_\_\_\_\_  
 All work done in accordance with the City of Seattle Standard Plans and Specifications in effect on the date shown above, and supplemented by Special Provisions.

**ID 6 : BENCH ARM RESTS**

**DESCRIPTION:**  
 CUSTOM CAST IRON ARM RESTS WITH COAST SALISH PATTERN RELIEF  
**LOCATIONS:**  
 AT ALL ARM REST LOCATIONS, AS SHOWN ON DRAWINGS



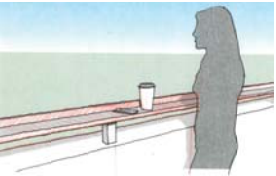
**VICTOR STEINBRUECK PARK**  
 100% SD  
**NATIVE AMERICAN CULTURAL ELEMENTS**

DESIGNED	JJ/BK	DATE	01/27/2017
DRAWN	RB		
CHECKED	o/d	SHEET	1 OF 1
ORDINANCE NO.	-	<b>ID101</b>	
CONTRACT NO.	-		
SCALE			

**ID 7 : NATIVE SAYINGS**

**DESCRIPTION:**  
 LASER ETCHED OR LASER CUT CHIEF SALISH QUOTES, POETRY, OR SEATTLE NATIVE QUOTES INTO NEW GUARDRAIL TOP 6'X18' AREA, EACH LOCATION  
**LOCATIONS:**  
 AS SHOWN ON DRAWINGS AND DESCRIBED ABOVE

**Tempered by Memory**  
 Tempered by Memory honors those who lost and risked their lives in the events of September 11, 2001. It was made possible by hundreds of individuals, businesses, and organizations from the Seattle region and beyond.  
**The Background**  
 Seattle Springs was one of many communities across the city inspired by the events of September 11, 2001. Our community lost residents, family and friends in the attacks. In the aftermath, first responders, firefighters, and humanitarian from our region assisted in the response and recovery efforts at the World Trade Center site. Seattle Springs, which has trace its origins to the great medicinal spring from in High Road Park, again served as a source of healing in 2002 when residents and businesses created a memorial program which provided materials to 175 Home Park City residents and pedestrians together with.  
**The Story**  
 The Iron Assembly or Iron Park and Park Jones named Seattle Springs with the intent to honor and anchor from the World Trade Center site. The memory of the steel plates that made up the World Trade Center's steel beams, a flag, and sections of steel columns. The project was first seen through a lens inspired by the National Institute of Standards and Technology in its investigation of the towers collapse. The steel plates cut into the range was left there by two of the respondents who cut the plates into sections so it could be removed from the city.



NOT FOR CONSTRUCTION