



**Seattle**  
Parks & Recreation

# Victor Steinbrueck Park Improvements

## PARKS AND GREEN SPACES LEVY PROJECT

[Welcome](#)[Overview](#)[Original Design](#)[Proposed Design](#)[Park Areas](#)[Furnishings](#)[Planting](#)[Native American Culture](#)[Comment](#)

## Welcome

Welcome to the online open house for the Victor Steinbrueck Park Improvements project. Here you can learn about the project and provide your input on potential park upgrades. This open house is available through April 13, 2018.

### How to use this online open house

- Visit the tabbed “stations” to learn about important issues and then give us your feedback.
- Share this site with others who may be interested in the project.

#### 1. What is your relationship to the park? (check all that apply)

- I live near the park
- I work near the park
- I live and/or work in Seattle
- I do not live and/or work in Seattle

#### 2. How often do you use the park? (check one)

- I frequently visit the park
- I occasionally visit the park
- I rarely visit the park
- I have never been to the park



### Take notes as you go

Use this space to take notes as you review the material on each page. You may choose to use these notes as feedback on the "Comment" page.

Take notes here.

### Contact

WEB: [Project website](#)  
EMAIL: [david.graves@seattle.gov](mailto:david.graves@seattle.gov)  
PHONE: [\(206\) 684-7048](tel:(206)684-7048)



**Seattle**  
Parks & Recreation

### Share this site with others



# Victor Steinbrueck Park Improvements

## PARKS AND GREEN SPACES LEVY PROJECT

## Overview

*We are improving Victor Steinbrueck Park to preserve its legacy and significance.*

Victor Steinbrueck Park was created in 1981 by architect and activist Victor Steinbrueck and landscape architect Rich Haag. After helping to save Pike Place Market from demolition, the two designed the park (originally named Market Park) as a place to enjoy the view and to act as an extension of Market's social life, providing a place to gather outside. The park designers felt strongly that the park provide for all people, including disadvantaged members of our community.

Victor Steinbrueck Park is an incredibly well-used and well-loved space, and over the years it has seen the effects of overuse and general wear and tear. Various elements have also been added or removed from the park over time.

**This project will take a holistic approach to improving the park for all.**

### Goals

In 2008, City Council passed a levy that allocated \$1.6M for "Improvements to Public Safety". These include but are not limited to:

- Improving sight lines into the park
- Renovating seating
- Renovating the former children's play area\*
- Improving and expanding lighting
- Upgrading landscaping

The park is within the Pike Place Market Historic District; the Pike Place Market Historic Commission has adopted guidelines which outline the "character defining features" of the park. These guidelines must be considered as part of any park improvements.

\* Note: Since this levy was passed, the former children's play area was replaced by a gathering space and *Tree of Life* sculpture.

### Scope

The scope of this project includes public outreach, design, and construction related to improvements outlined above. In addition, the park was constructed on top of a parking garage, and it has recently been determined that the waterproofing membrane between the park and garage is failing. Replacing the membrane will require the entire park to be removed and reconstructed. Seattle Parks & Recreation has secured funding to cover park improvements described in the levy language as well as waterproofing improvements and park reconstruction that result from the membrane replacement, and other required work.

### Process

The design team meets regularly with numerous local stakeholders and park users. The design team also meets regularly with Seattle Parks & Recreation and the Pike Place Market Historical Commission, which is responsible for making decisions on all use and design changes in the Market to ensure that the historic character of the Market is preserved. The Seattle City Council must approve the final design pursuant to the levy language.

Public outreach includes four open houses (in person and online) as well as an on-site event and interviews hosted by City of Seattle Community Liaisons.

We are in the early stages of what is expected to be a multi-year design and construction process.

## Outreach

The design team and Seattle Parks Department have engaged in many months of outreach to park users, local stakeholders, the surrounding community, and the general public. We have also engaged in conversations with Richard Haag and others who were involved in the original park design, the Pike Place Market Historic Commission, Design Review Committee, MarketFront Committee and Pike Place Market PDA. In coordination with the Department of Neighborhoods and other engagement liaisons, the design team and the Seattle Park Department also reached out to the homeless, as well as the Native American community. The results of our initial public outreach efforts are presented below and on the following pages of this online open house.

Through open houses (in person and online), surveys, and interviews over the last two years, we have gathered community feedback on design concepts and options for the park's renovation, and opinions on proposed changes. General sentiments on key topics are summarized below. The design team has considered this feedback, and worked with Seattle Parks and Recreation and the Pike Place Market Historical Commission to incorporate appropriate design responses through refinement of the park renovation design.

- **General:** Most people feel that the renovation should maintain spirit of the park while providing modern enhancements and emphasizing public safety and regular park activation to ensure future success.
- **Play:** Most people feel that the park should accommodate children and families, either with a small play area or natural features that would encourage play. Opinions were mixed about whether a play area or simpler and less defined space would function better.
- **Furnishings:** Many people liked the addition of movable furnishings, new features such as a guardrail counter, and seating in new locations such as the children's area. Most people felt that better lighting is essential to activate the park at night, especially during winter months.
- **Connection:** Most people considered it a priority to connect the park to MarketFront and the future waterfront connection, and preferred a direct, intuitive connection that maintained the social function and comfortable feeling of enclosure of the picnic area (South Room).
- **Lighting:** Most people felt that lighting improvements are a high priority and that the design proposal would increase the feeling of safety. Glare should be minimized and should not impede the nighttime view.
- **Native American Culture:** Most people voiced support for the authentic representation of Native American culture, specifically local Coast Salish culture, in the park's design and elements. Many said the park should do more to engage Native Americans to activate the space with cultural activities.



### Project Schedule

Public Open House 1	May 2016
Design Options and Review with Pike Place Market Historical Commission	Summer 2016
Public Open House 2	October 2016
Complete Schematic Design	December 2016
Public Open House 3	Early 2017
Start Detailed Design	Early 2017
Public Open House 4 (online)	March 2018
Begin Construction (park closes)	Fall 2019*
Park Opens	Summer 2020*

\*Anticipated

### Open house 1



May 17, 2016

### Pop-up event



May 19, 2016

### Online open house 1



May 17- 31, 2016

### Take notes as you go

Use this space to take notes as you review the material on each page. You may choose to use these notes as feedback on the "Comment" page.

Take notes here.

### Contact

WEB: [Project website](#)  
 EMAIL: [david.graves@seattle.gov](mailto:david.graves@seattle.gov)  
 PHONE: (206) 684-7048

### Share this site with others



# Victor Steinbrueck Park Improvements

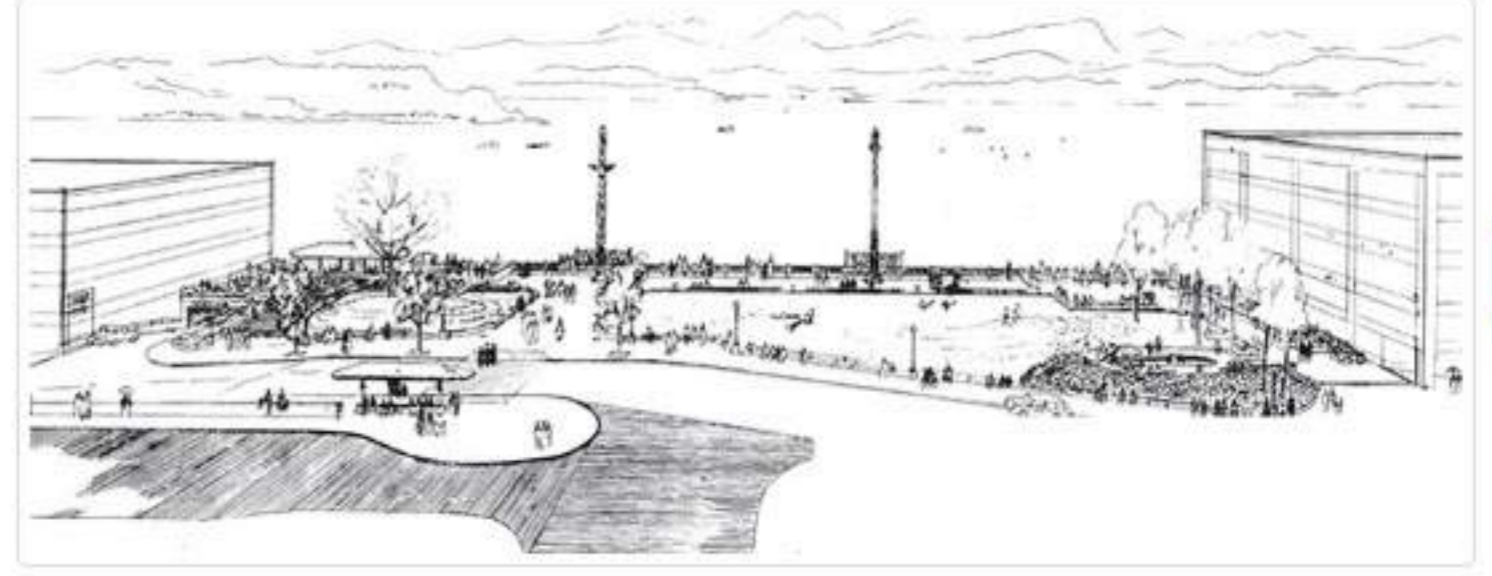
## PARKS AND GREEN SPACES LEVY PROJECT

### Original Design

*The park is an extension of the Market and lively public space with a tranquil view of the Sound and mountains.*

The park was designed with two simple goals in mind:

- It provides a “belvedere” to enjoy the view of the water and the mountains
- It is an extension of the Market, a place for people from all walks of life to congregate outside.



Artist's rendering of the original design

This renovation is not proposing a wholesale redesign of the park. Instead, improvements will be made that preserve the original design intent and use of the park, while acknowledging the significant change in context since the park was constructed.



Original site plan (labels not original)

### LEGEND

**A** Park paths were laid out to lead visitors out to the “belvedere” and the view over the water.

**B** The mounded lawns shelter the park from the street and create informal green gathering space with a fantastic view.

Three “outdoor rooms” were created as small gathering areas set slightly apart from the rest of the park:

**C** The pergola and picnic area in the southwest corner

**D** The picnic area in the northwest corner

**E** The children’s play area, which is now the site of the Tree of Life sculpture and gathering space.

<b>A Belvedere</b>	<b>B Lawns</b>	<b>C Picnic Area</b>	<b>D Picnic Area</b>	<b>E Tree of Life Sculpture <small>(former play area)</small></b>
				
				

**Take notes as you go**

Use this space to take notes as you review the material on each page. You may choose to use these notes as feedback on the "Comment" page.

Take notes here.

**Contact**

WEB: [Project website](#)  
 EMAIL: [david.graves@seattle.gov](mailto:david.graves@seattle.gov)  
 PHONE: (206) 684-7048



**Share this site with others**

# Victor Steinbrueck Park Improvements

## PARKS AND GREEN SPACES LEVY PROJECT

## Proposed Design

### Site Plan



### Legend

- 1 Tree of Life Sculpture
- 2 Children's Play Area
- 3 North Room
- 4 Carved Poles
- 5 Berms
- 6 South Room
- 7 MarketFront

To see design options previously presented to the public, [click here](#).

The proposed design retains the site layout and features of the original park while making significant improvements to the durability and quality of park amenities. The design also helps the park adapt to its new surroundings – it includes a connection to MarketFront and increases circulation and use of key spaces such as the picnic areas in the north and southwest corners of the park. A family friendly area will be created on the north side of the park with expanded seating and dining options set amongst natural features. Surface materials, furnishings, lighting, and other park details are being carefully crafted in order to enhance the beauty of the park while keeping it simple and welcoming to all.

Seattle Parks & Recreation is currently working with community partners and stakeholders on plans to activate the park with small scale activities for all ages. The park design will support this goal by incorporating flexible areas for small gatherings, classes, and storytelling; movable tables and chairs, and storage facilities for maintenance equipment and Park ranger supplies.

The park design will also incorporate the Tree of Life sculpture, which will not be relocated or otherwise moved as the result of feedback received.

### Birdseye View



### Take notes as you go

Use this space to take notes as you review the material on each page. You may choose to use these notes as feedback on the "Comment" page.

Take notes here.

### Contact

WEB: [Project website](#)  
 EMAIL: [david.graves@seattle.gov](mailto:david.graves@seattle.gov)  
 PHONE: (206) 684-7048



### Share this site with others



# Victor Steinbrueck Park Improvements

## PARKS AND GREEN SPACES LEVY PROJECT

### Park Areas

#### North Side



#### Legend

- 1 Tree of Life with New Sidewalk Connection
- 2 Benches
- 3 Grove
- 4 Children's Paving
- 5 Low Step to Lawn
- 6 Accessible Route to Lawn
- 7 Stone Slabs
- 8 Council Table
- 9 Supplemental Seating - Moveable Table
- 10 Brick Paving

#### Existing conditions



Improvements to the north side of the park aim to create a more comfortable and distinct environment for different kinds of gathering. The proposed design restores elements of the original park design that were subsequently removed, including a grove of deciduous trees and an area where young children can play and their parents can sit and watch. The children's area features stone slabs for climbing and sitting, a paving design that invites kids to examine and discover details of nature and make up games, an accessible route to the lawn.

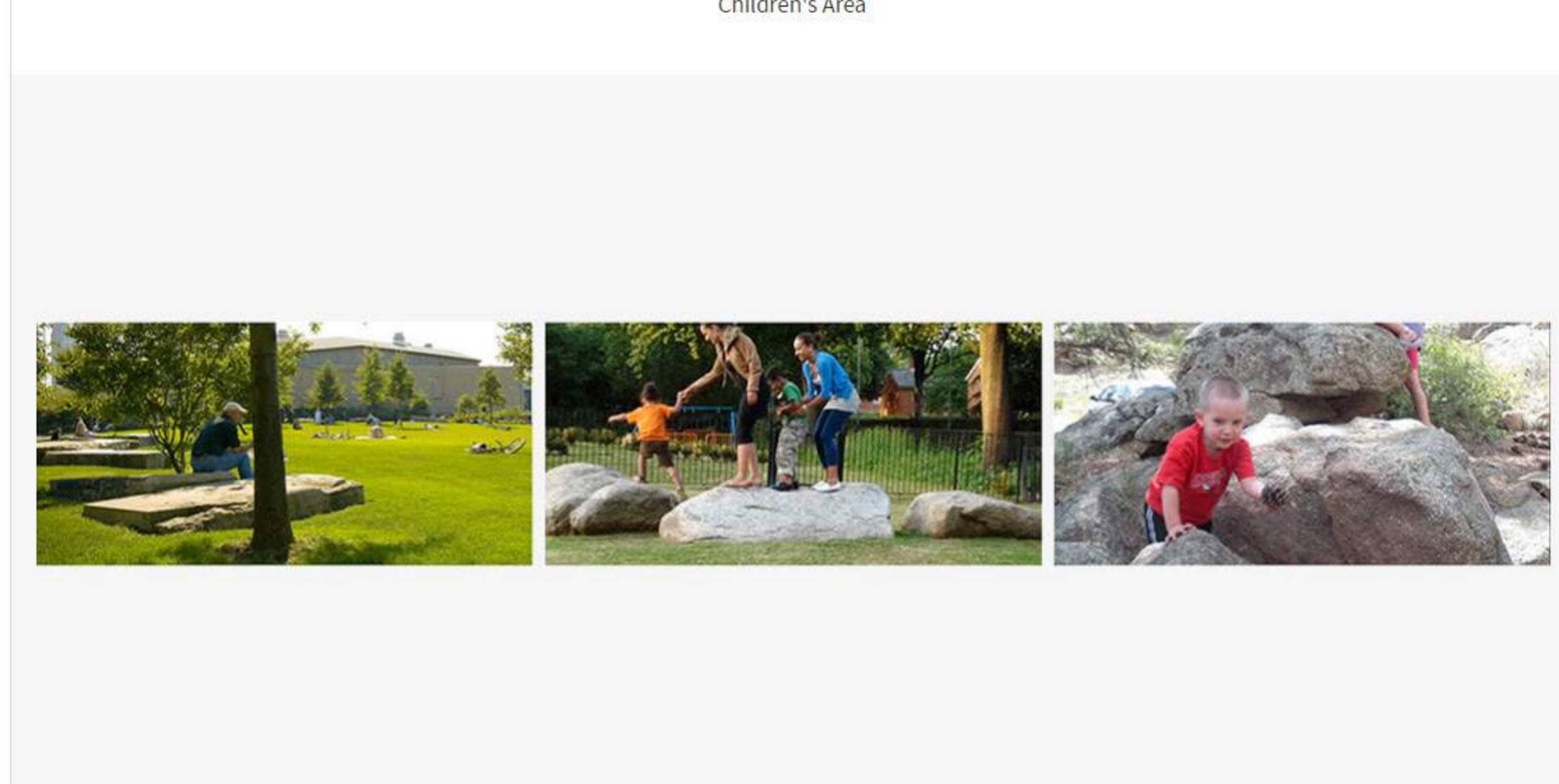
To accommodate larger group gatherings, the North Room features a long "council table" that be rearranged by Seattle Parks and Recreation for hosting activities like art and gardening classes, board games, and storytelling.

The proposed design provides a new path from the sidewalk to the existing Tree of Life, a sculpture and gathering area dedicated to the remembrance of homeless people. By connecting the Tree of Life to the street and park gathering areas, the design aims to give it prominence as a welcoming and integral part of the park.

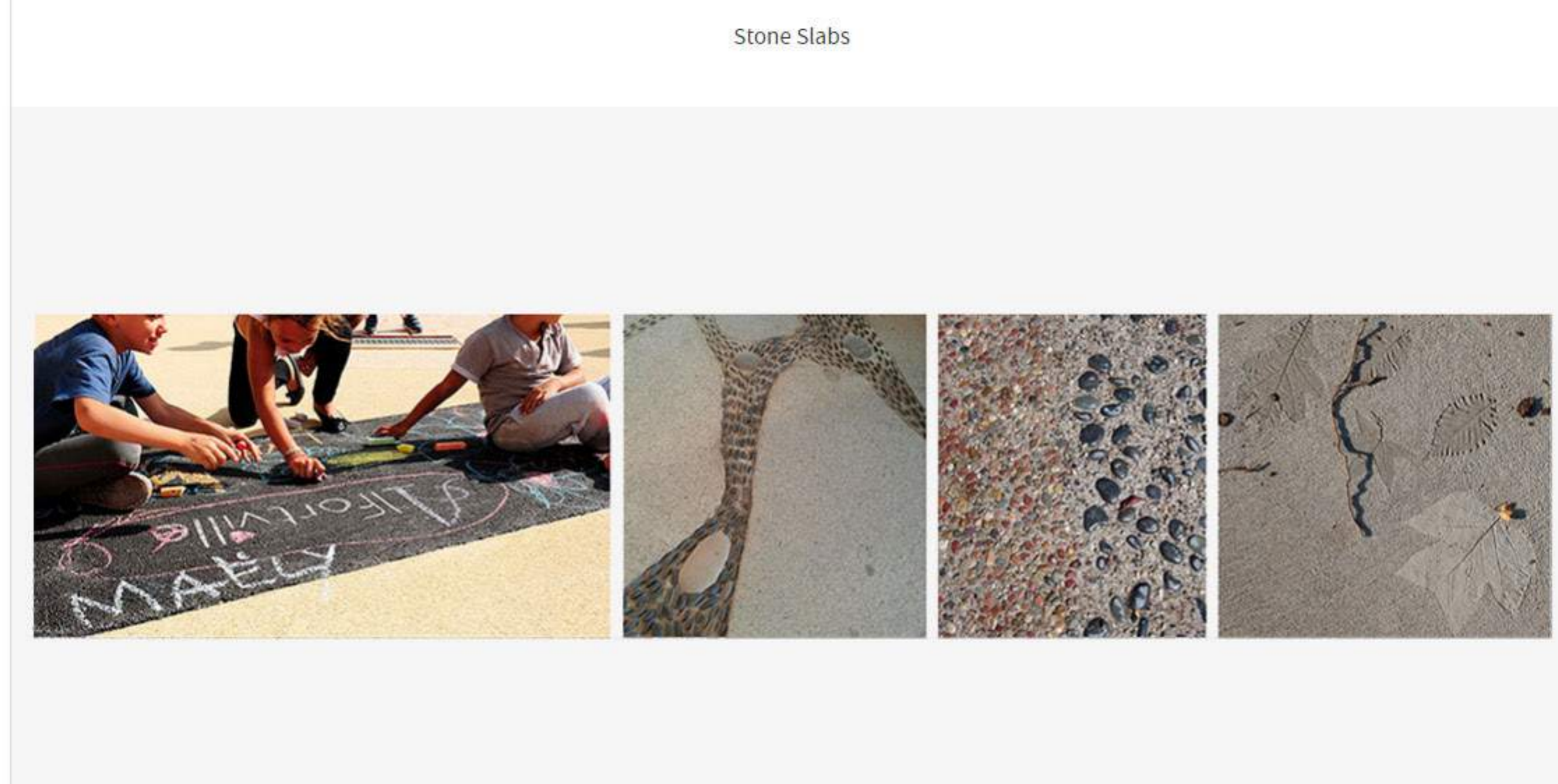
#### Proposed Design - Children's Area



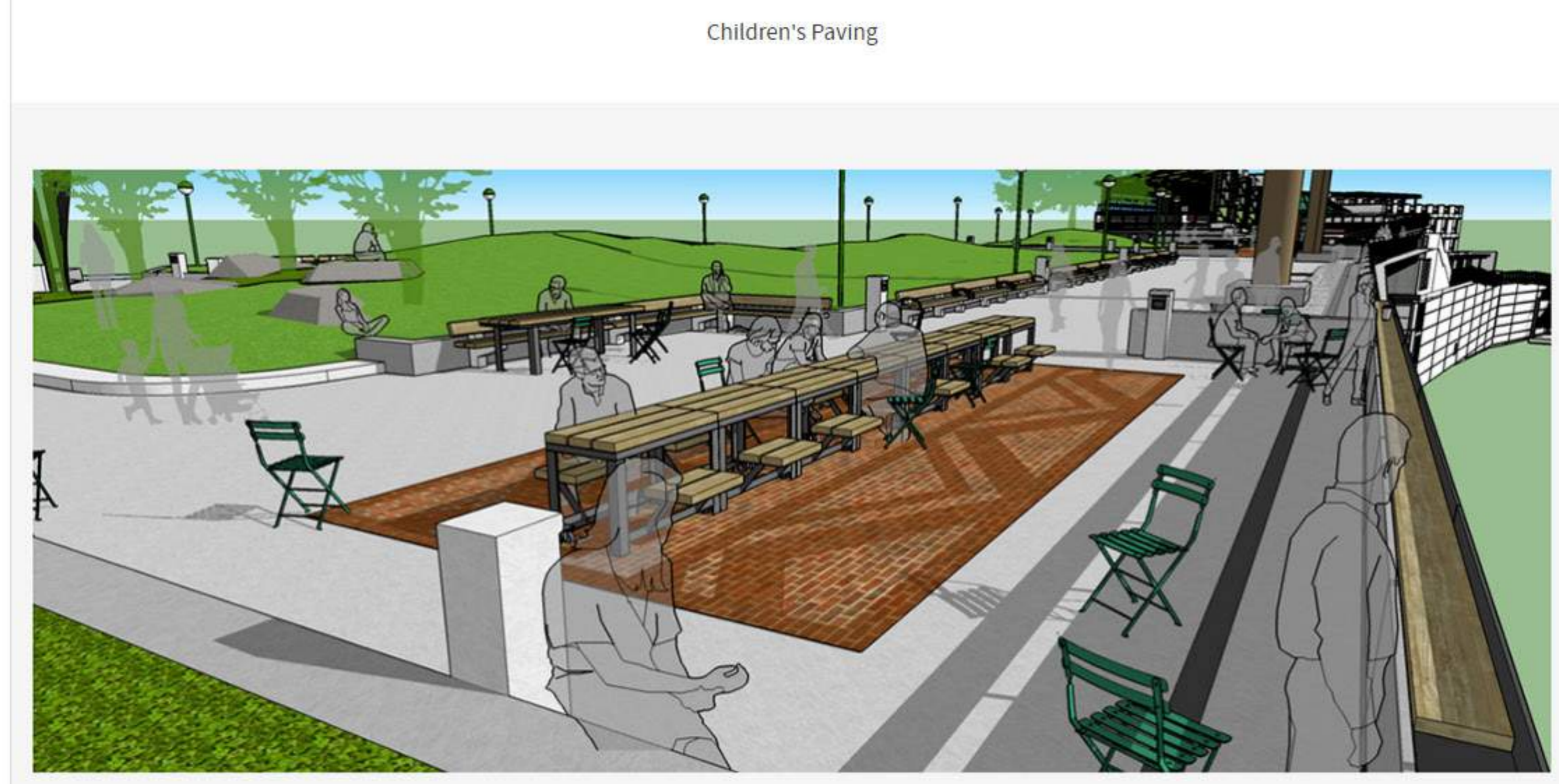
Children's Area



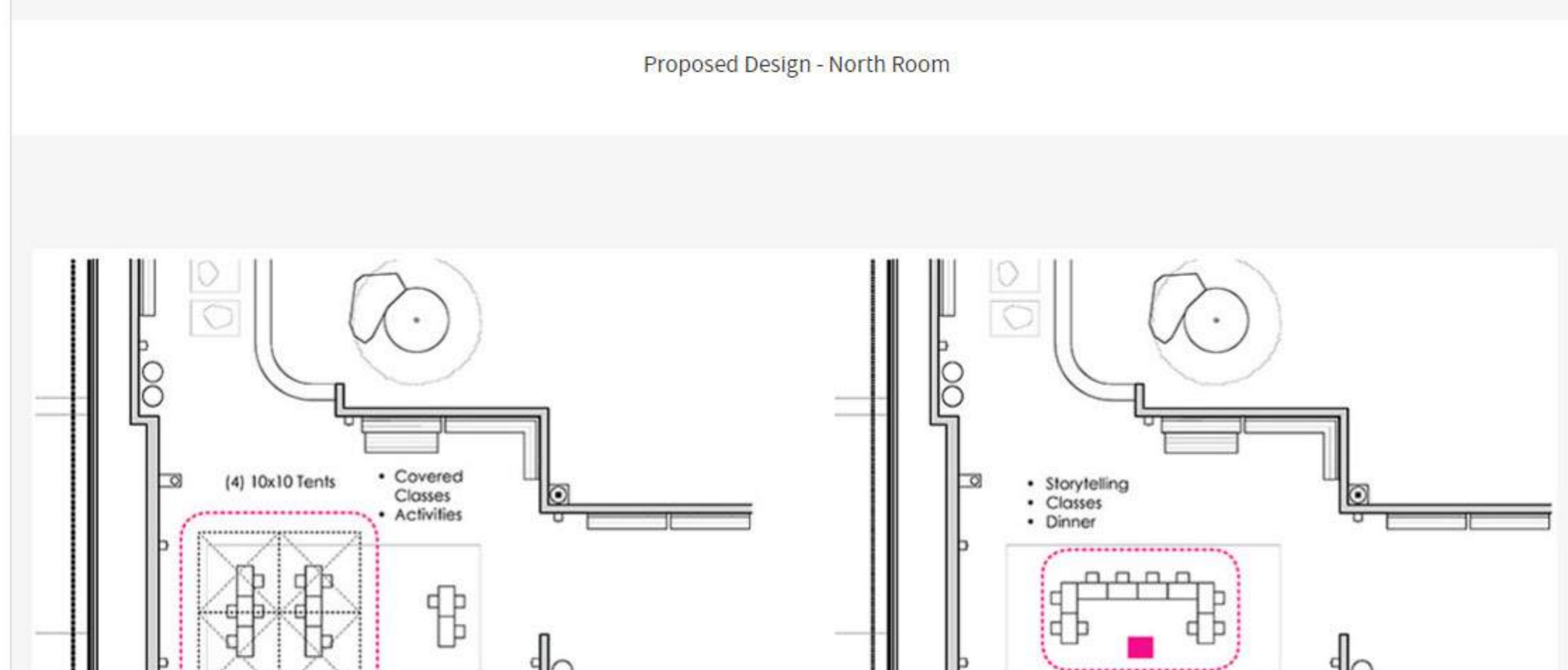
Stone Slabs



Children's Paving

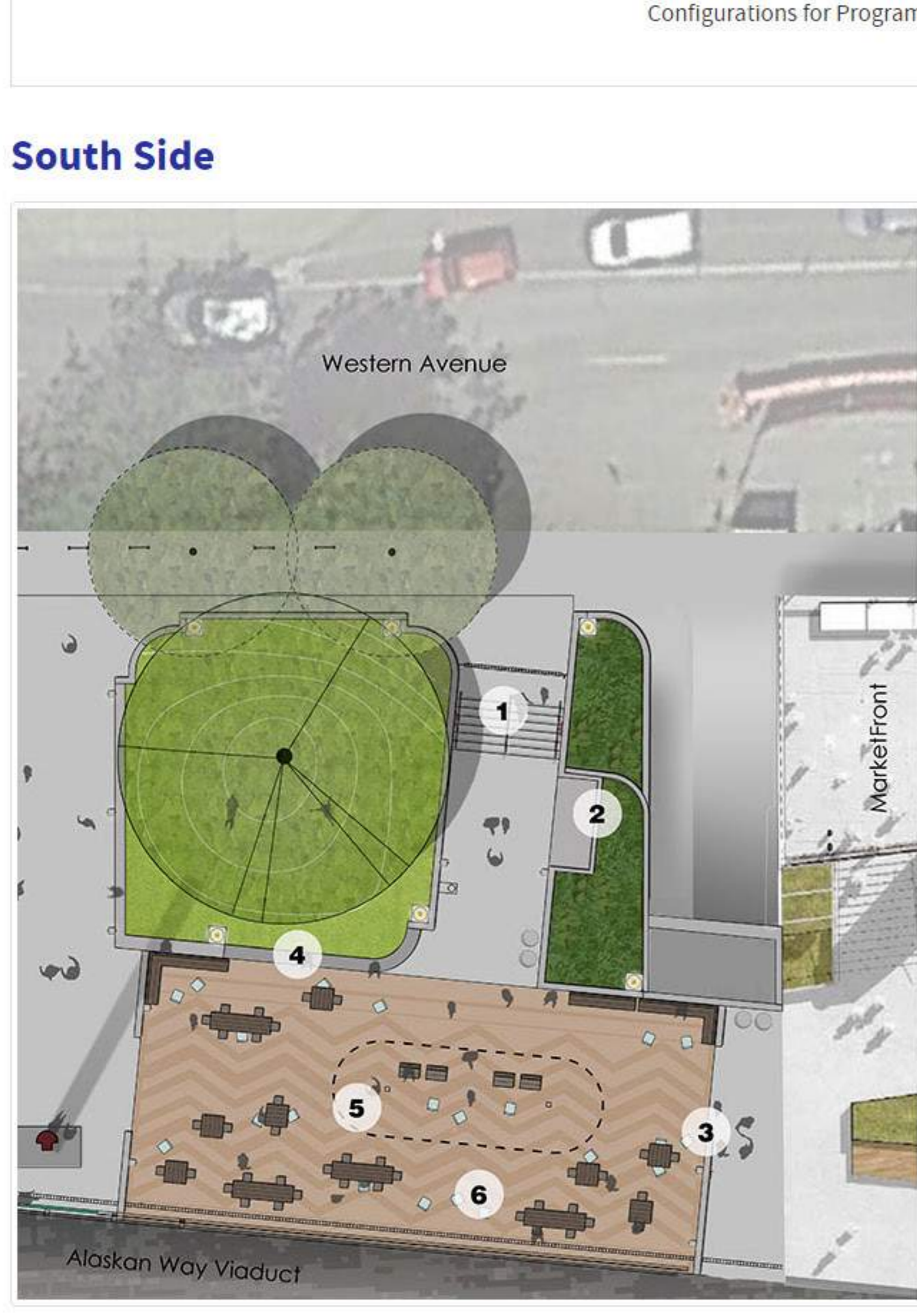


Proposed Design - North Room



Configurations for Programming

#### South Side



#### Legend

- 1 Stair to Western Avenue Sidewalk
- 2 SPR Storage Closet
- 3 Connection to MarketFront
- 4 Access to Lawn
- 5 New Pergola and Furniture
- 6 Supplemental Seating - Movable Chairs

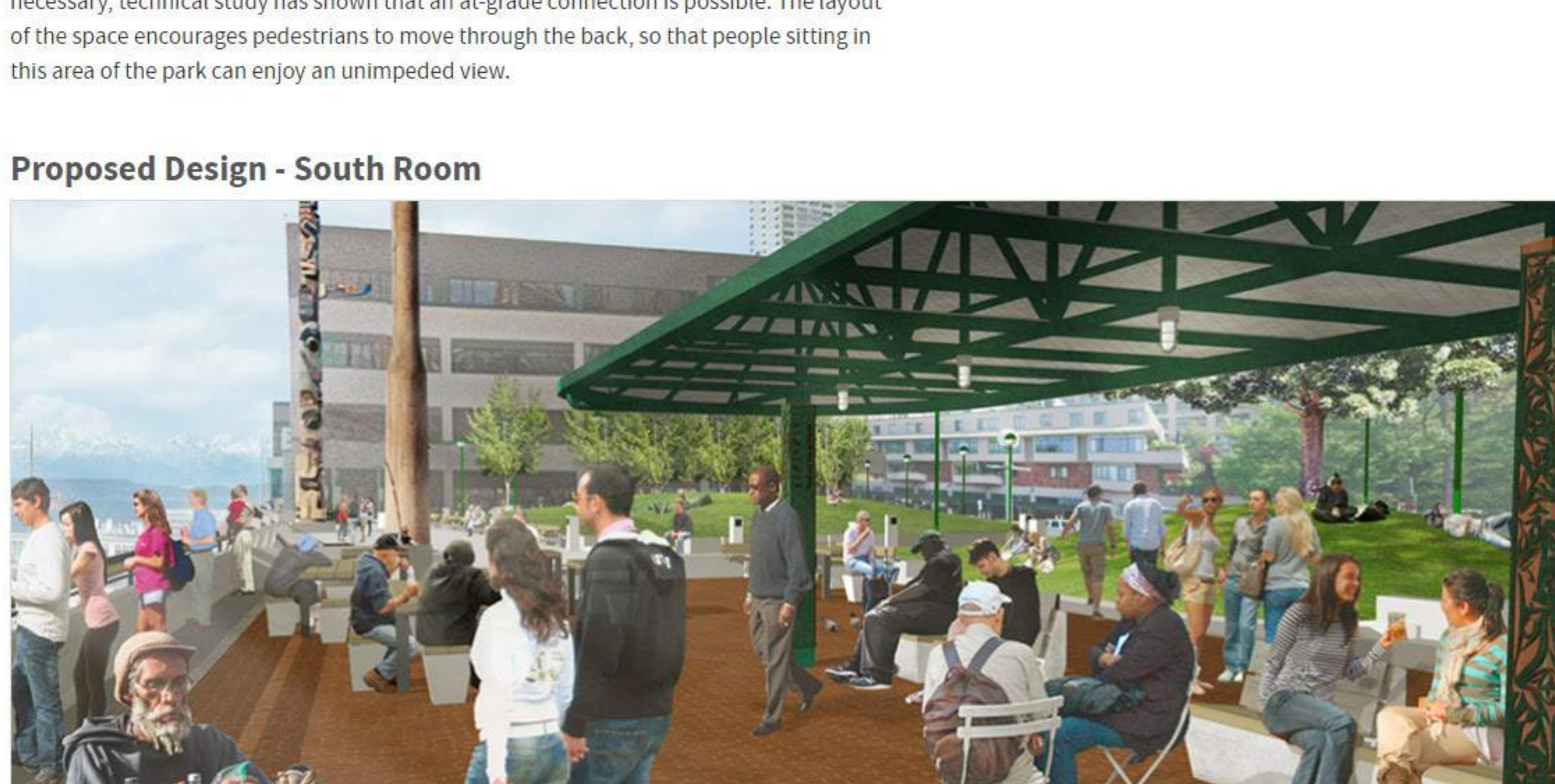
#### Existing conditions



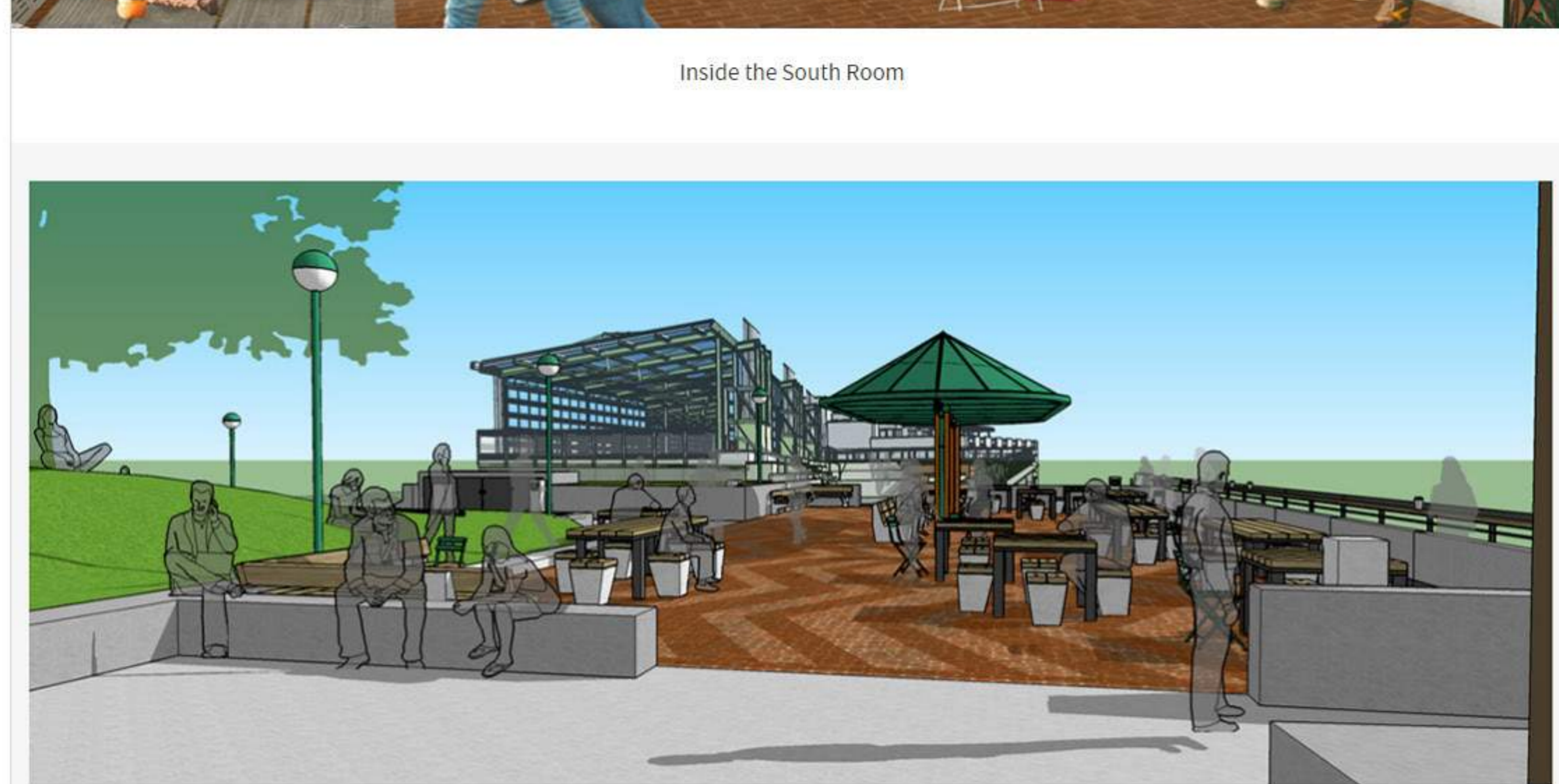
Improvements to the South Room are focused on fostering the social gathering and mixing that was intended in the original design for this area of the park. New picnic table designs and configurations are more comfortable and flexible, accommodating different sizes of groups and informal seating with movable chairs. A low step provides better access to the grassy hill, to better connect it to the gathering area. The old picnic shelter will be replaced with a similar structure, with improved and more durable detailing, more comfortable seating and covered area for movable chairs, and new lighting.

The park will connect to the Market and future Overlook Walk connection to the waterfront at an opening in the wall at the end of the south room. The design for the connection has evolved since Schematic Design. Where steps and a ramped path were previously thought necessary, technical study has shown that an at-grade connection is possible. The layout of the space encourages pedestrians to move through the back, so that people sitting in this area of the park can enjoy an unimpeded view.

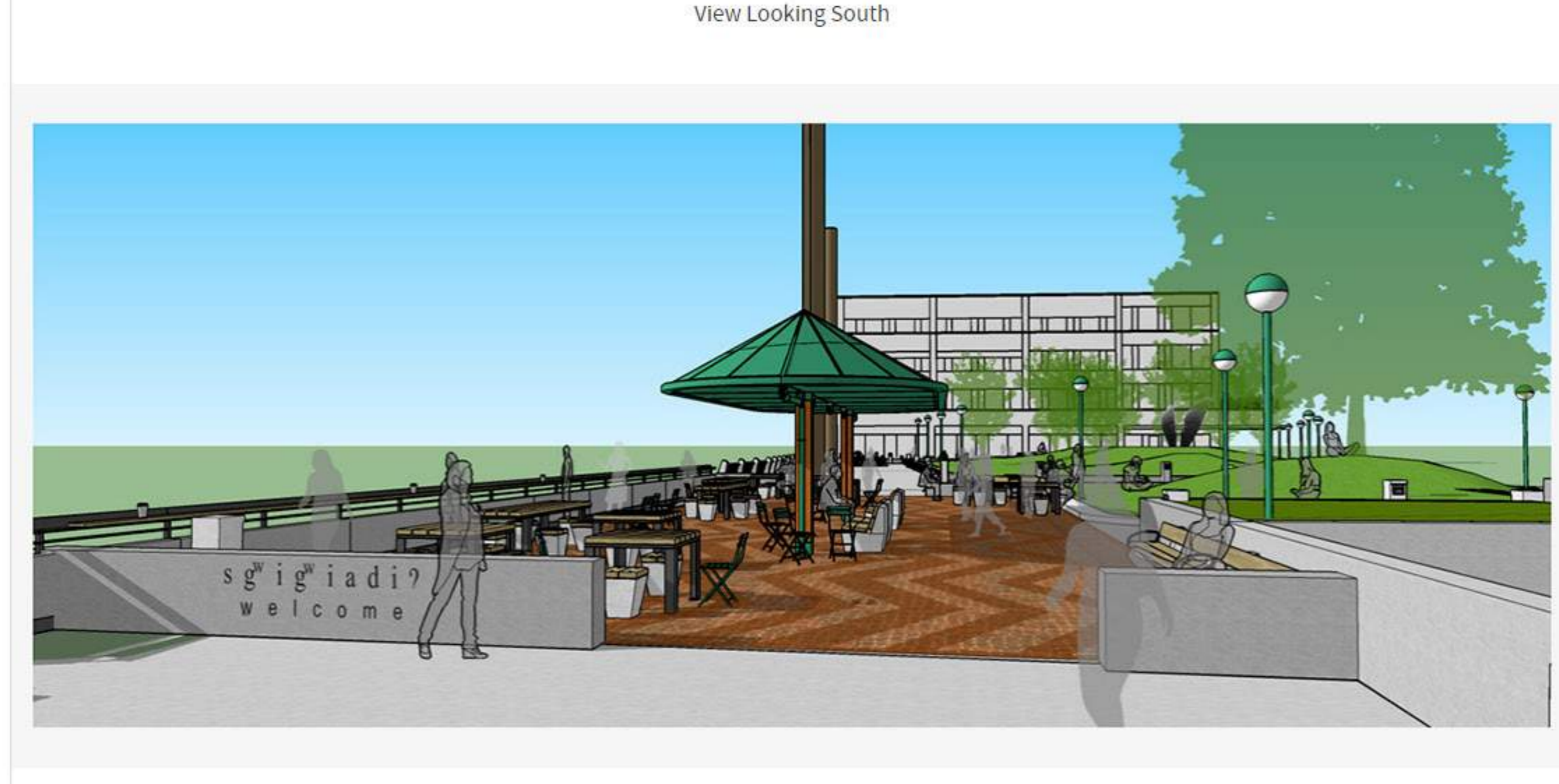
#### Proposed Design - South Room



Inside the South Room



View Looking South



View looking North: Approach from MarketFront

#### Take notes as you go

Use this space to take notes as you review the material on each page. You may choose to use these notes as feedback on the "Comment" page.

Take notes here.

#### Contact

WEB: [Project website](http://Project website)  
EMAIL: [david.graves@seattle.gov](mailto:david.graves@seattle.gov)  
PHONE: (206) 684-7048

#### Share this site with others



# Victor Steinbrueck Park Improvements

## PARKS AND GREEN SPACES LEVY PROJECT

## Furnishings

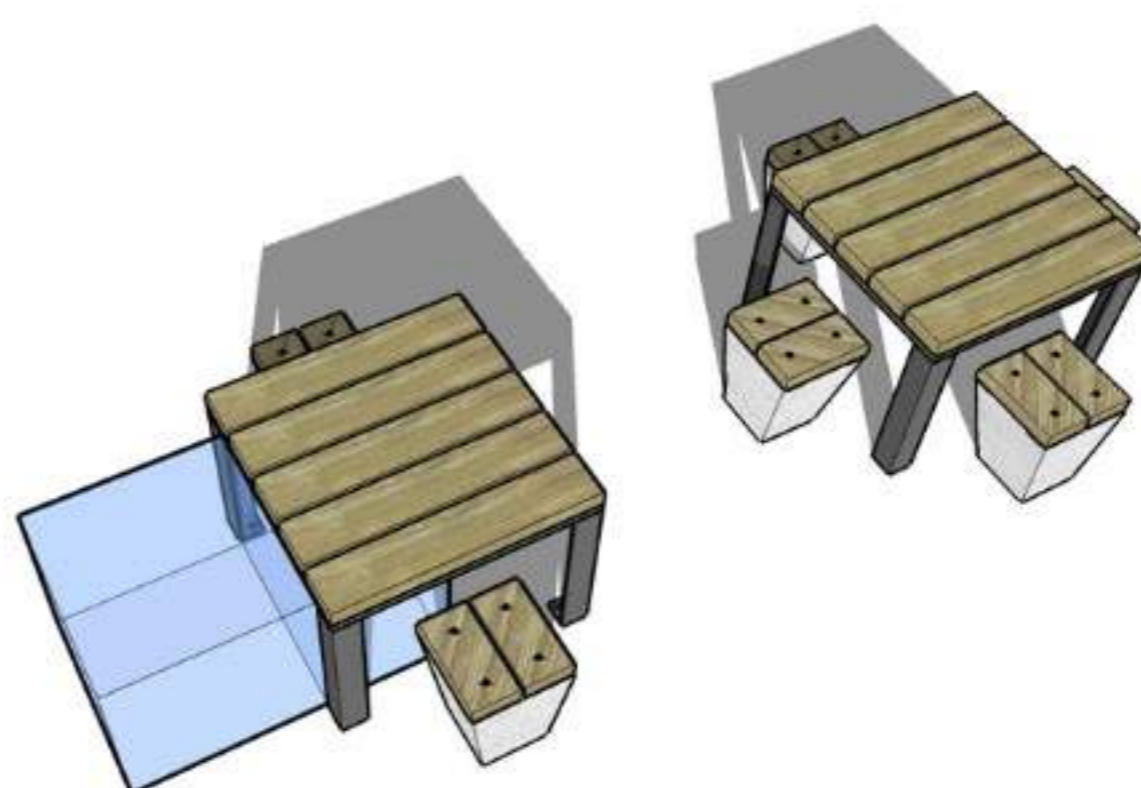
Updated designs for the park's benches, tables, and stools retain the simple, wood-based character of the original furniture while making the park's seating and gathering areas more comfortable and flexible for the range of uses the park serves today. New furnishings will be universally accessible and durable, and promote the social life and passive enjoyment of the park.

### Existing Furnishings



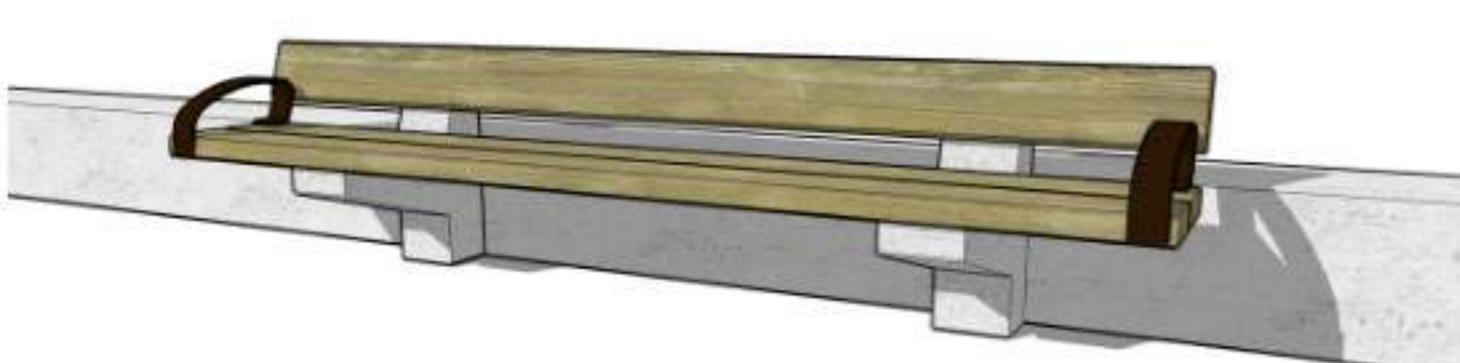
### Proposed Furnishings

#### Tables



Two picnic table sizes and multiple configurations of fixed seating will provide many social options. Stool bases will be designed so that they do not interfere with table legs or prohibit movement. Companion seating and clear spaces for wheelchairs will be provided throughout seating areas.

#### Benches



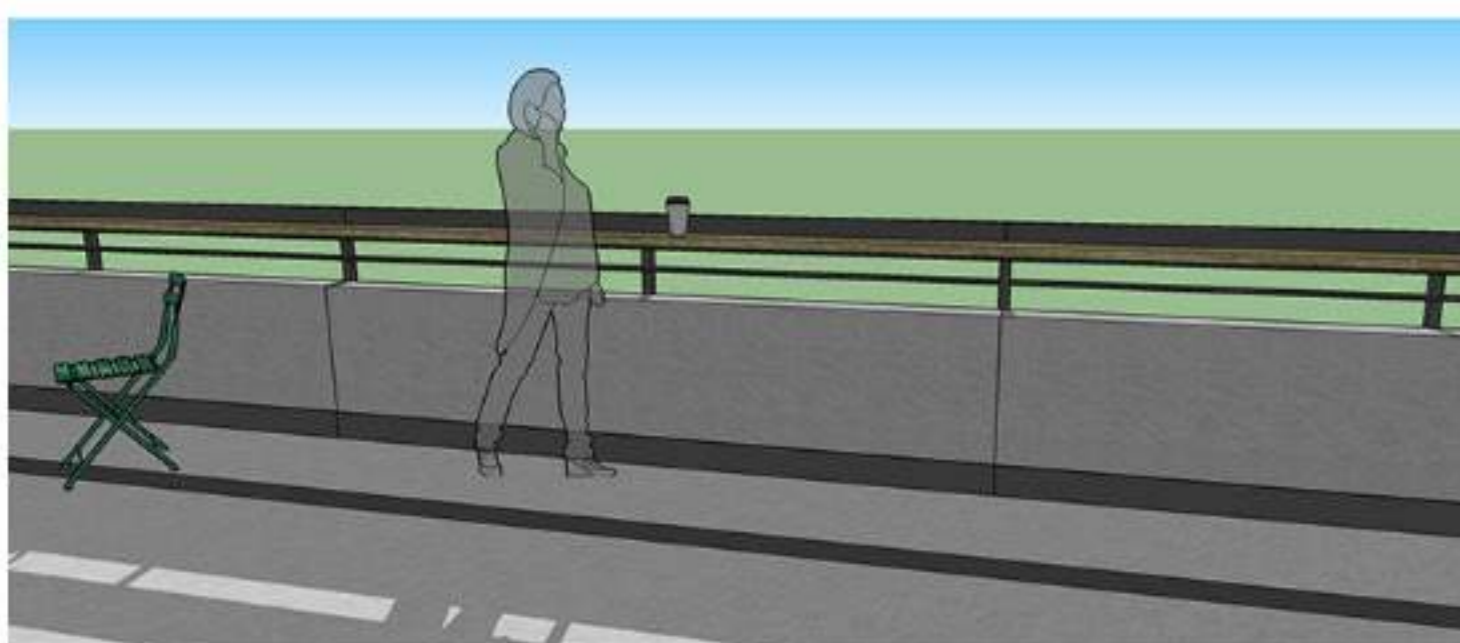
New benches will be similar to the original design, with occasional arm rests to make sitting down and getting up easier, and to meet ADA guidelines.

#### Supplemental Seating

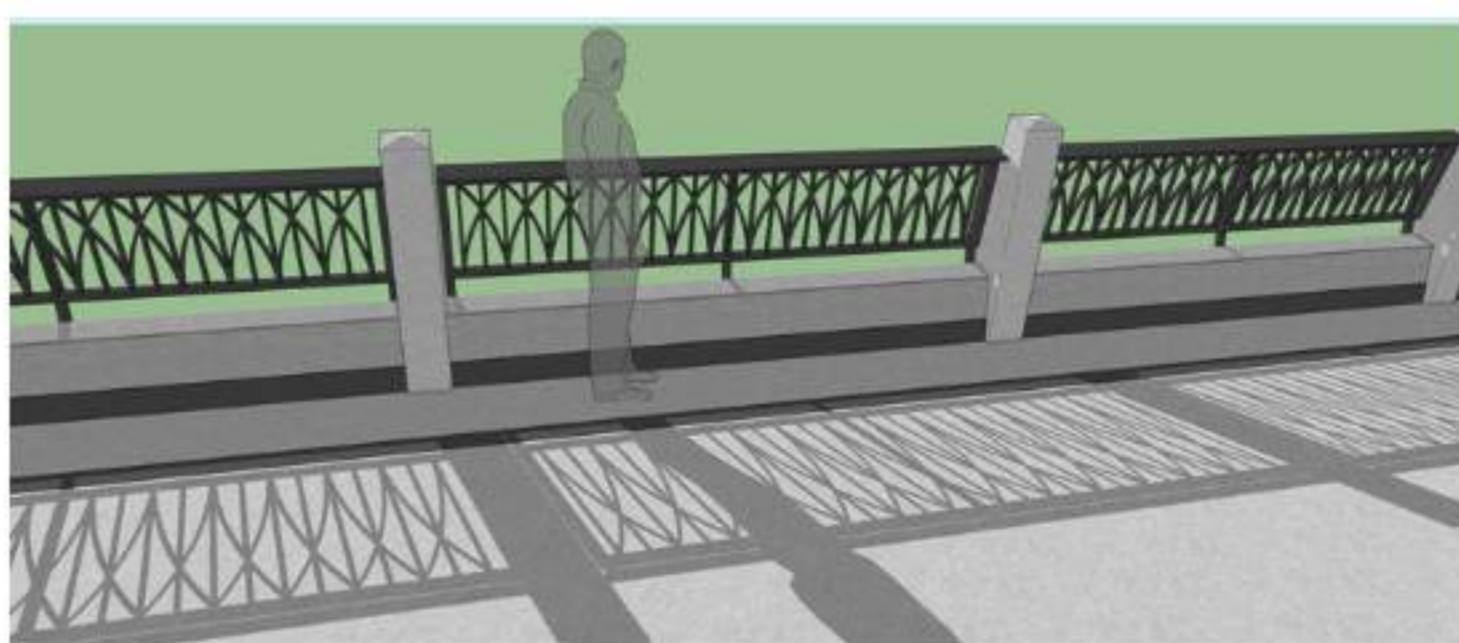


Movable chairs allow people the freedom to choose where to sit: in the sun or shade, in small or large groups, by the action or by themselves. Existing capacity of fixed tables and chairs will not decrease; movable options are supplemental.

#### Guardrails



In the North and South Rooms, a small counter will provide a casual place to stop and appreciate the view over coffee or lunch.



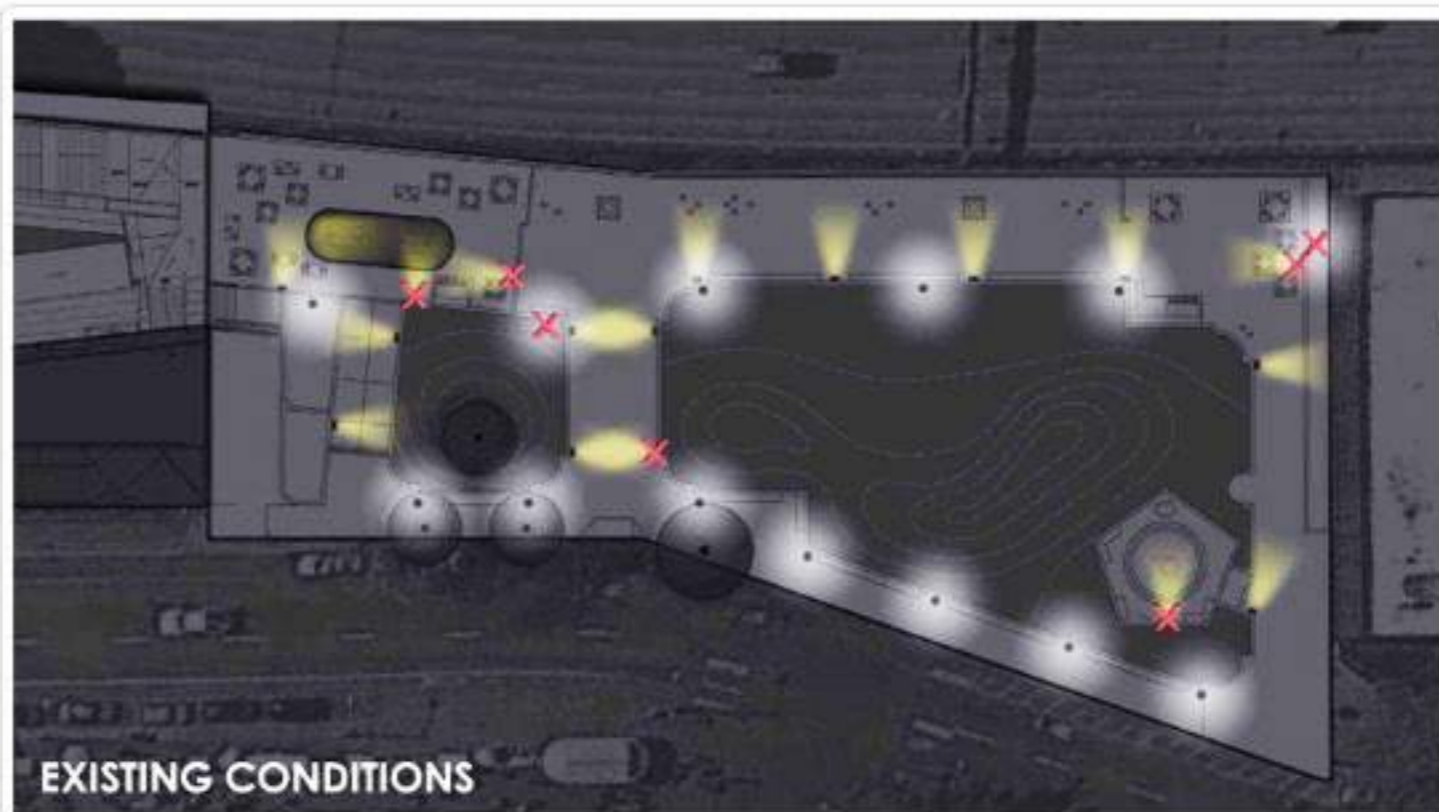
In the central Belvedere area, the decorative guardrail design will be updated to meet current design standards and code requirements.

## Lighting

The existing lighting in the park does not meet current standards, and its technology is out-of-date. Park lighting will be improved to provide a more welcoming and comfortable atmosphere in the evening hours.

### Our priorities

1. Correct light levels throughout
2. Correct (match) color temperature throughout
3. Minimize contrast (light/dark)
4. Enhance wayfinding
5. Ensure a holistic aesthetic



The park currently has very bright spots and very dark spots. Light levels and light color is uneven. It does not promote a sense of safety or help welcome people into the park.

Red "X"s indicate non-functioning lights (spring 2016).

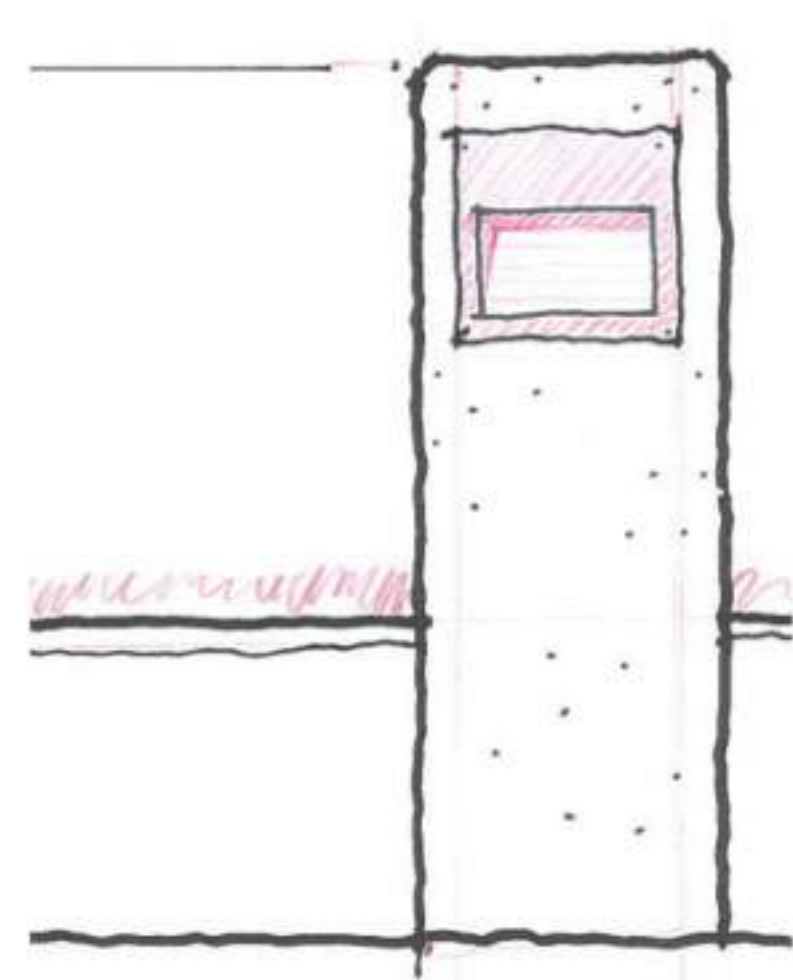
#### Pole

Pedestrian pole lights will be replaced with a similar fixture that disperses light better, is shielded on top, and does not produce glare. The bulb will be a warm-toned LED.



#### Bollard

Bollards will be replaced with similar, more narrow bollards and new LED luminaries. The design team is exploring ways to cast light in a 180 degree or 360 degree pattern to improve the lighting of the pathways and the edges of the lawn. Off the shelf, powder-coated bollards will also be studied to ensure that the best possible light is selected for the park.



#### Picnic Shelter Lighting

The new picnic shelter will have two types of lighting: "jelly jar" lights illuminating the space below, and concealed uplights to make the ceiling glow.



### Take notes as you go

Use this space to take notes as you review the material on each page. You may choose to use these notes as feedback on the "Comment" page.

Take notes here.

### Contact

WEB: [Project website](#)  
 EMAIL: [david.graves@seattle.gov](mailto:david.graves@seattle.gov)  
 PHONE: (206) 684-7048



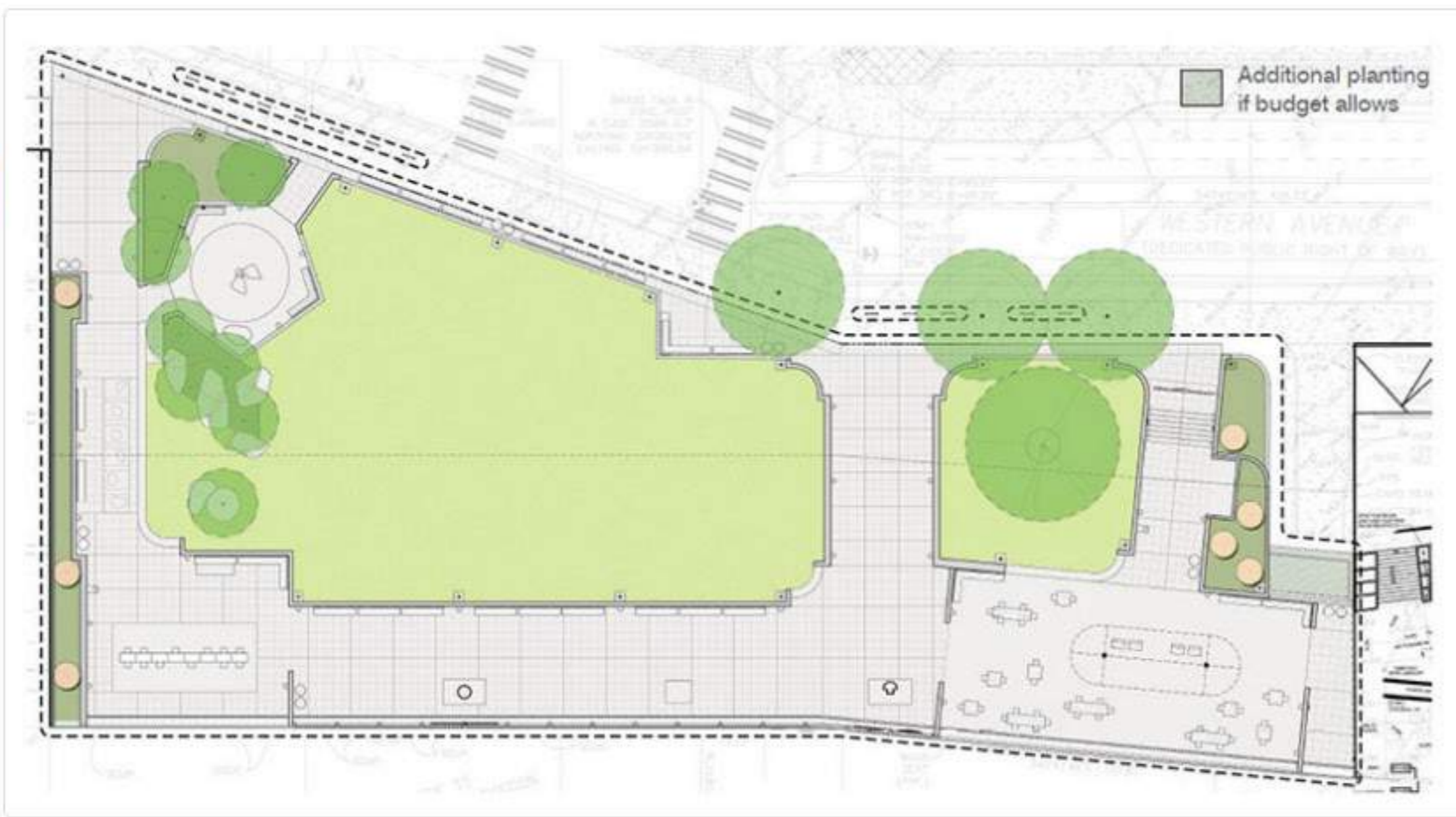
### Share this site with others



# Victor Steinbrueck Park Improvements

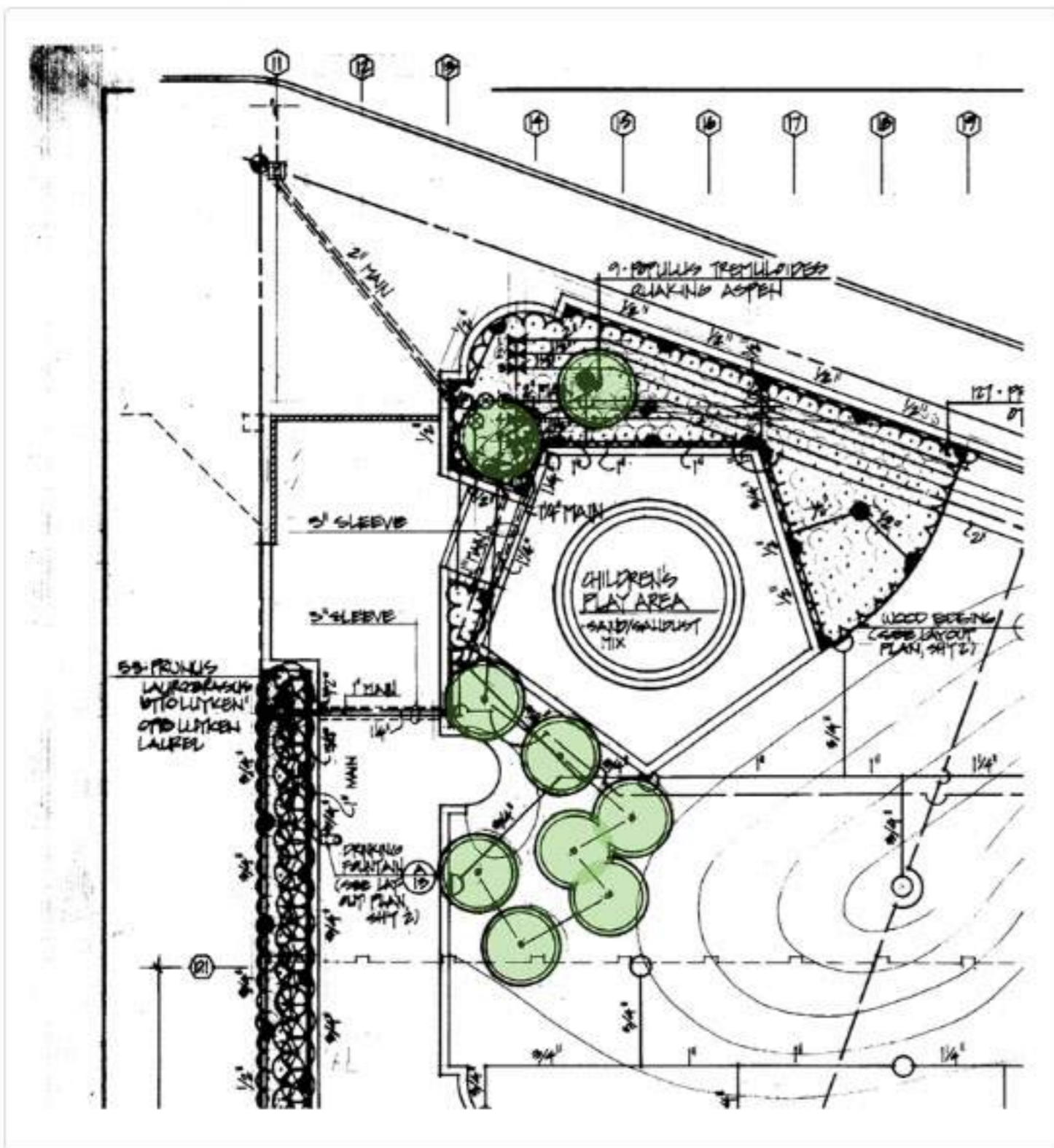
## PARKS AND GREEN SPACES LEVY PROJECT

### Planting



Lawn and planting areas will generally remain where they are today. Improvements will be focused on restoring the grove of deciduous trees in the original design, and making more inviting spaces with a richer sense of connection to the park's natural surrounding.

### Restoring the Grove



The original design featured an aspen grove on the north side of the park, meant to provide scale, shade, and seasonal interest. These trees were not successful and were eventually removed.

The proposed design will restore this grove. While aspens are not an appropriate and viable species for this park, we are looking into options for an alternate selection with similar characteristics in terms of size and shape, fall color, and movement in the wind.

### Planting Palette

We are developing a palette of native or adapted trees, low shrubs, accents, and groundcovers to create a cohesive environment that feels natural and connected to the larger landscape, and is durable and sustainable at Victor Steinbrueck Park. The planting design will consider seasonal variation and attracting birds. Some plants, like blueberry, are carried forward from the original design.

The images below show plant species options that reflect the new planting concept for the park.



### London Plane Tree

The large existing London plane tree in the south end of the park sits less than five feet behind the back of the garage structure below the park and most likely would not survive if left in place during construction. At this time, we are carrying two potential options to address this challenge:

- remove the existing tree and replace it in kind with a new large specimen tree, or
- relocate the existing tree during construction and replant it in its original location, after work on the garage and park construction is complete



### Take notes as you go

Use this space to take notes as you review the material on each page. You may choose to use these notes as feedback on the "Comment" page.

Take notes here.

### Contact

WEB: [Project website](#)  
EMAIL: [david.graves@seattle.gov](mailto:david.graves@seattle.gov)  
PHONE: (206) 684-7048

### Share this site with others



# Victor Steinbrueck Park Improvements

## PARKS AND GREEN SPACES LEVY PROJECT

### Native American Culture



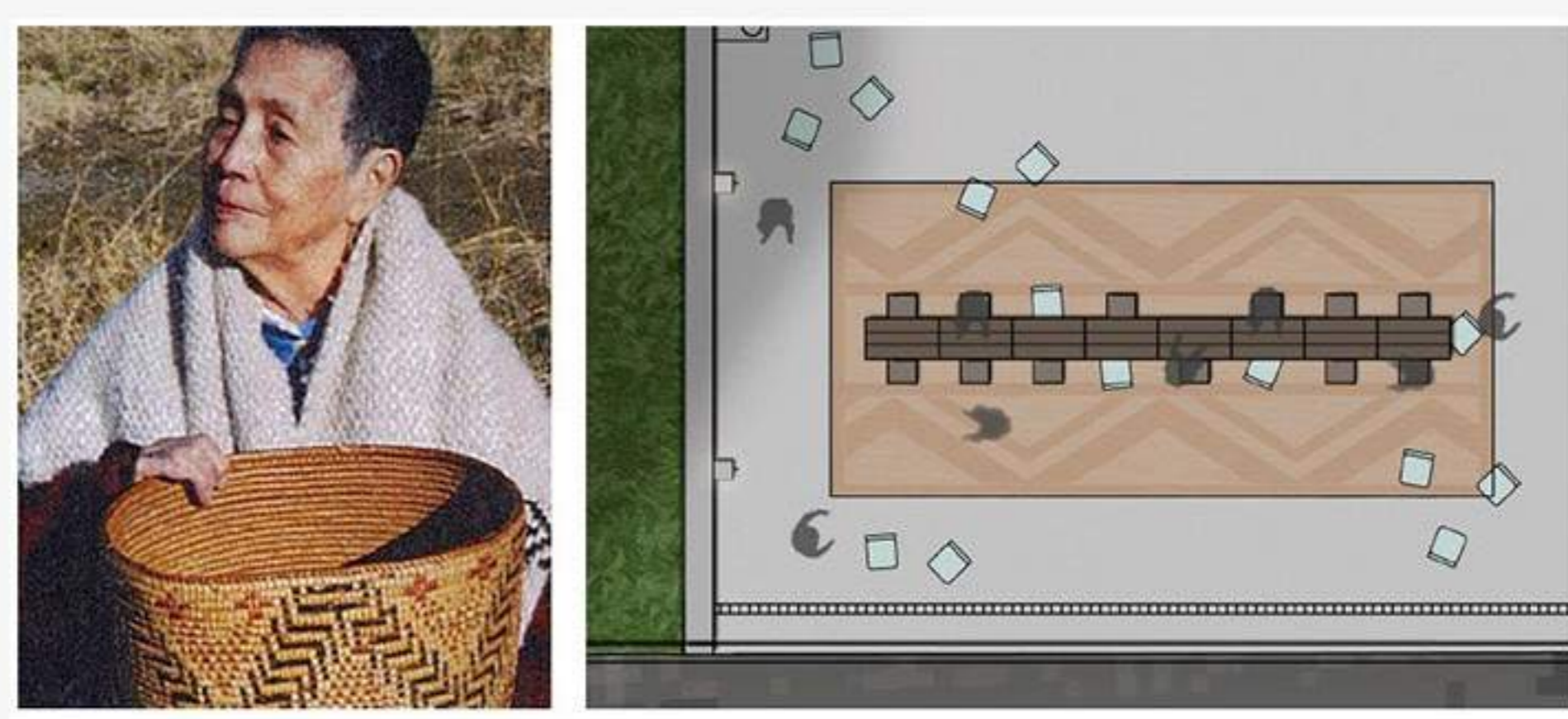
In our outreach we learned that many people consider Victor Steinbrueck Park to have unique importance to Native Americans, many of whom have relocated to Seattle from other places and know the park as place to meet and connect with others. Some call it "Native Park."

The original design features two carved poles created by Victor Steinbrueck and the artists James Bender and Marvin Oliver, the latter of Quinault/Isleta-Pueblo heritage. Though not representative of local Coast Salish tradition, for many people these art works stir a sense of Native American culture at the park.

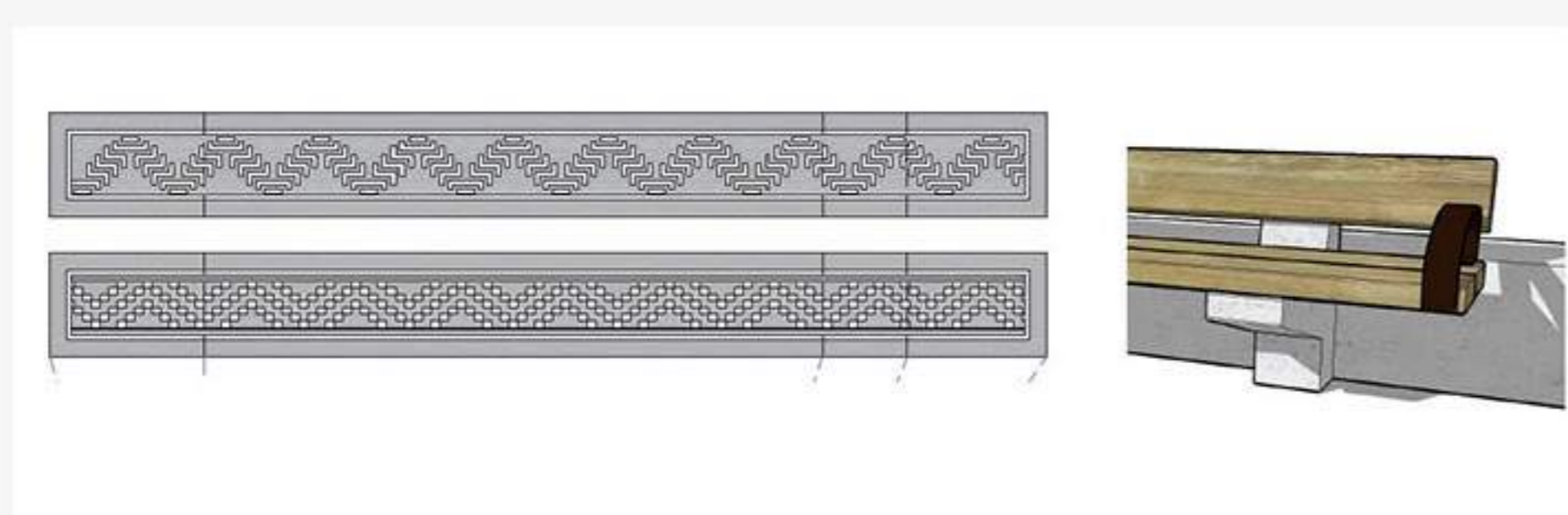
**The new design will honor Native American culture and celebrate local Coast Salish traditions through patterns and designs, language, and interpretive content.**

#### Patterns and Designs

Scroll through the images below to see examples of how Coast Salish patterns and designs could be incorporated in park elements.



Traditional basket weave patterns in brick paving "rugs" at the north and south rooms.



Coast Salish pattern relief cast into metal bench armrests



Laser cut metal wraps at the picnic shelter columns represent Native food traditions: Hunt, Forage, Gather

#### Language

Scroll through the images below to see how Coast Salish language might be used in the park.



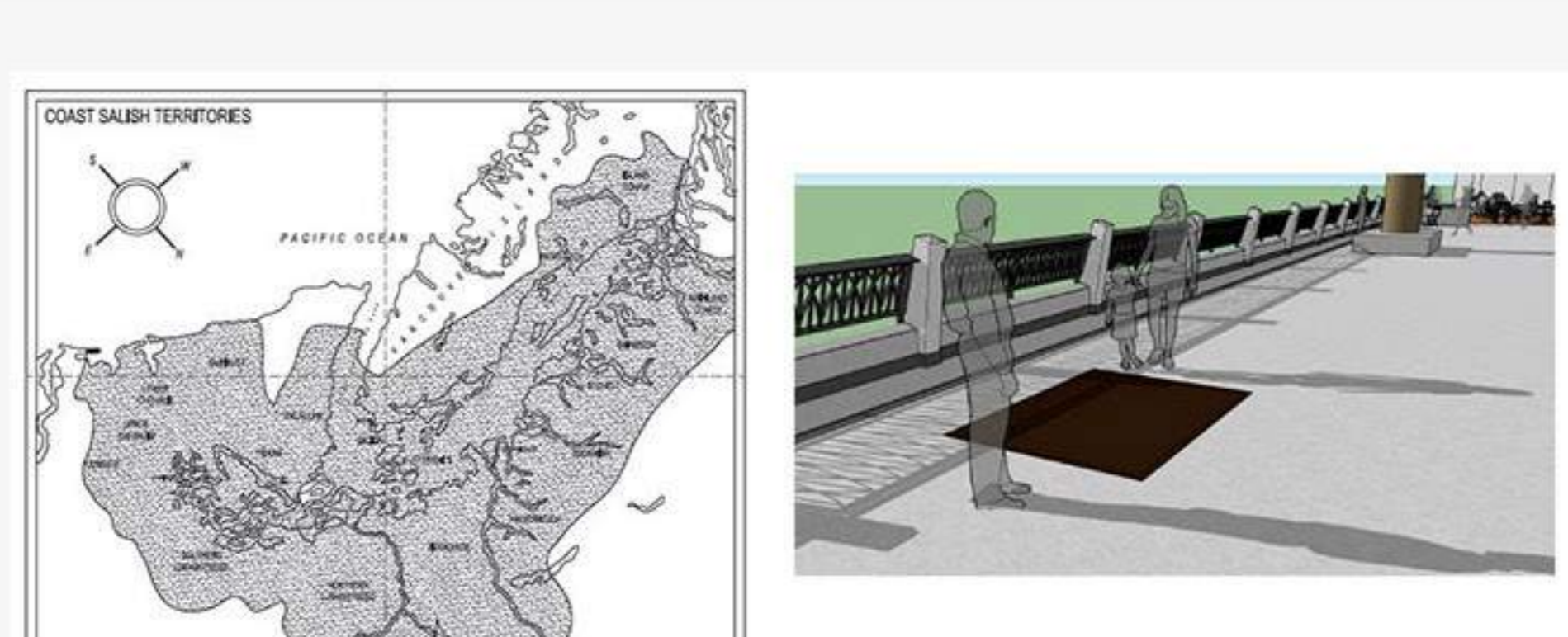
"Welcome" text at park entrances, in Lushootseed (Puget Sound Salish) and English



Chief Sealth sayings, in Lushootseed and English, etched into the metal guardrail (shown in pink), such as: "The earth does not belong to us. We belong to the earth."

#### Interpretive Content

Scroll through the images below to see examples of how educational elements could be included in the park.



A map showing the Coast Salish territories of Puget Sound



Interpretive plaques for each of the park's original carved poles, explaining its history and meaning.

#### Take notes as you go

Use this space to take notes as you review the material on each page. You may choose to use these notes as feedback on the "Comment" page.

Take notes here.

#### Contact

WEB: [Project website](#)  
EMAIL: [david.graves@seattle.gov](mailto:david.graves@seattle.gov)  
PHONE: (206) 684-7048

#### Share this site with others







# Victor Steinbrueck Park Improvements

## PARKS AND GREEN SPACES LEVY PROJECT

- Welcome
- Overview
- Original Design
- Proposed Design
- Park Areas
- Furnishings
- Planting
- Native American Culture
- Comment

### Comments

Submit

Presentations to Pike Place Market Historical Commission Design Review Committee (DRC) - Summer 2016:

- [DRC 1](#)
- [DRC 2](#)
- [DRC 3](#)
- [DRC 4](#)
- [DRC 5](#)

### Take notes as you go

Use this space to take notes as you review the material on each page. You may choose to use these notes as feedback on the "Comment" page.

Take notes here.

### Contact

WEB: [Project website](#)  
EMAIL: [david.graves@seattle.gov](mailto:david.graves@seattle.gov)  
PHONE: [\(206\) 684-7048](tel:(206)684-7048)



### Share this site with others

