

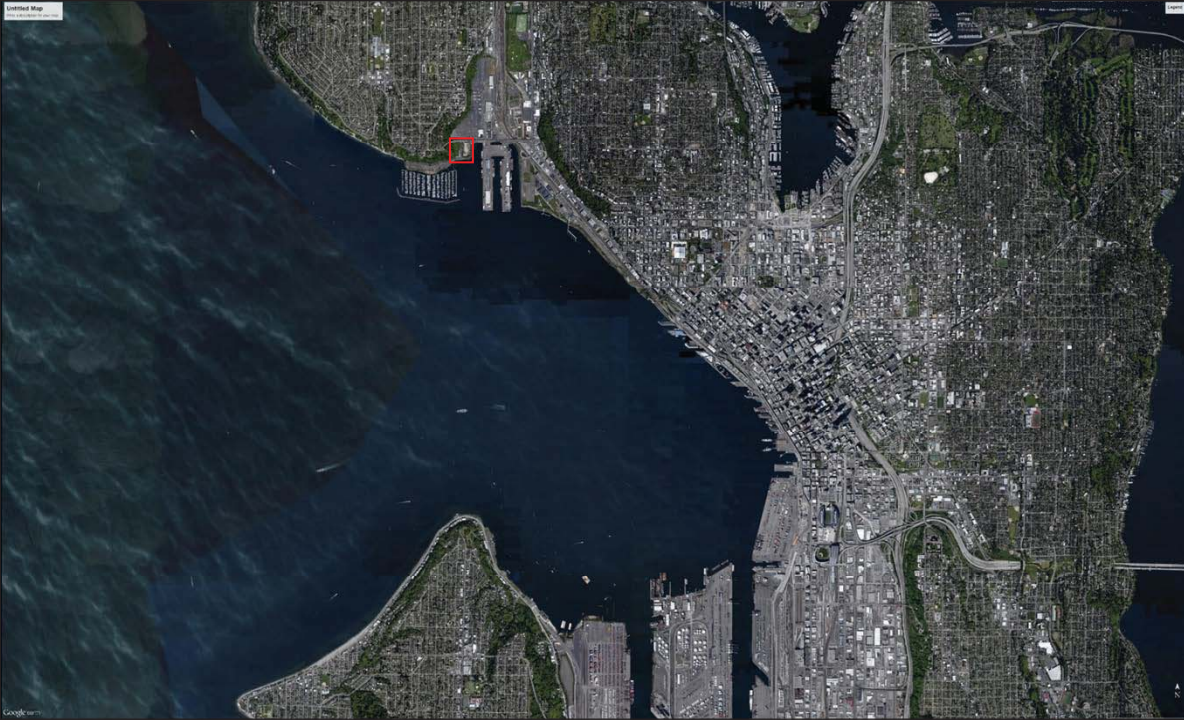


Smith Cove Park – Design Principles

Seattle Parks & Recreation

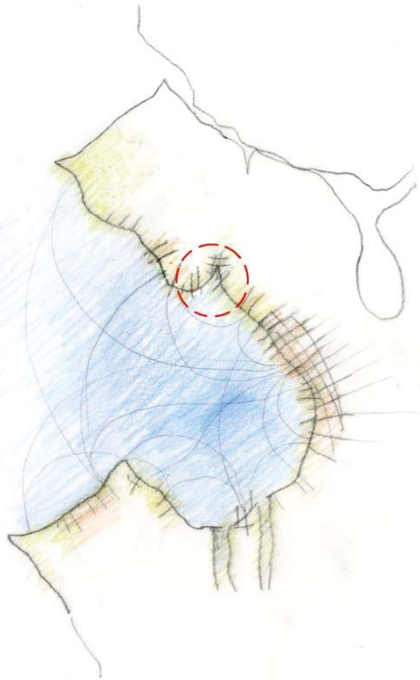
GGN

August 23, 2016





James Everett Stuart, 1889



SEATTLE

SMITH COVE PARK

FRIENDS OF SMITH COVE PARK
CITY OF SEATTLE DEPARTMENT OF NEIGHBORHOODS





Utah State Office
Smith Cove Park
Water access for small boats
Picnic Area
Overlook
Park Hours
4 a.m. to 11:30 p.m.
except for Special Events



Schedule – Construction Phase 1

Design: Fall 2016 - Winter 2017

Construction: 2018

Completion: Spring 2019



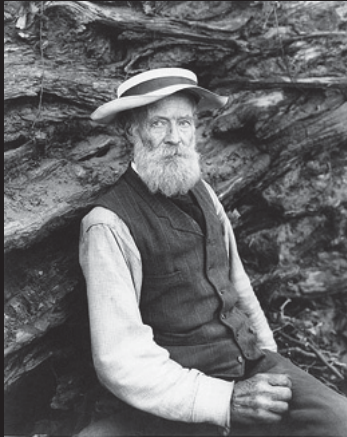
1161
Wilse

Mouth of Salmon Bay

1850s-1890s
Settlement and
Visions of Connection

Smith was an ethnologist, a linguist, a surgeon, a psychotherapist, a poet, a politician, and a botanist who grafted the area's first fruit trees.

'Papa has a passionate love for the beauties of nature, was kind to all the farm animals and they, in turn, seemed to understand and love him.'
- Henry Smith's daughter

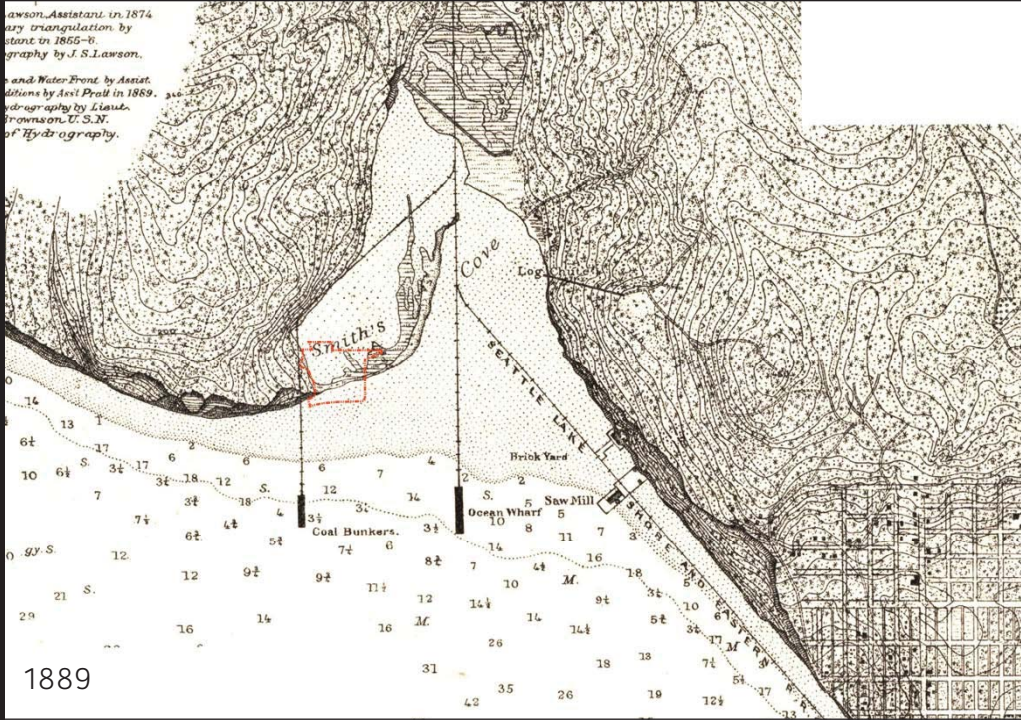


Henry Smith



Lawson, Assistant in 1874
ary triangulation by
stant in 1855-6.
ography by J. S. Lawson.

and Water-Front by Assis.
ditions by Assit Pratt in 1889.
ydrography by Lieut.
Brownson, U. S. N.
of Hydrography.



1889

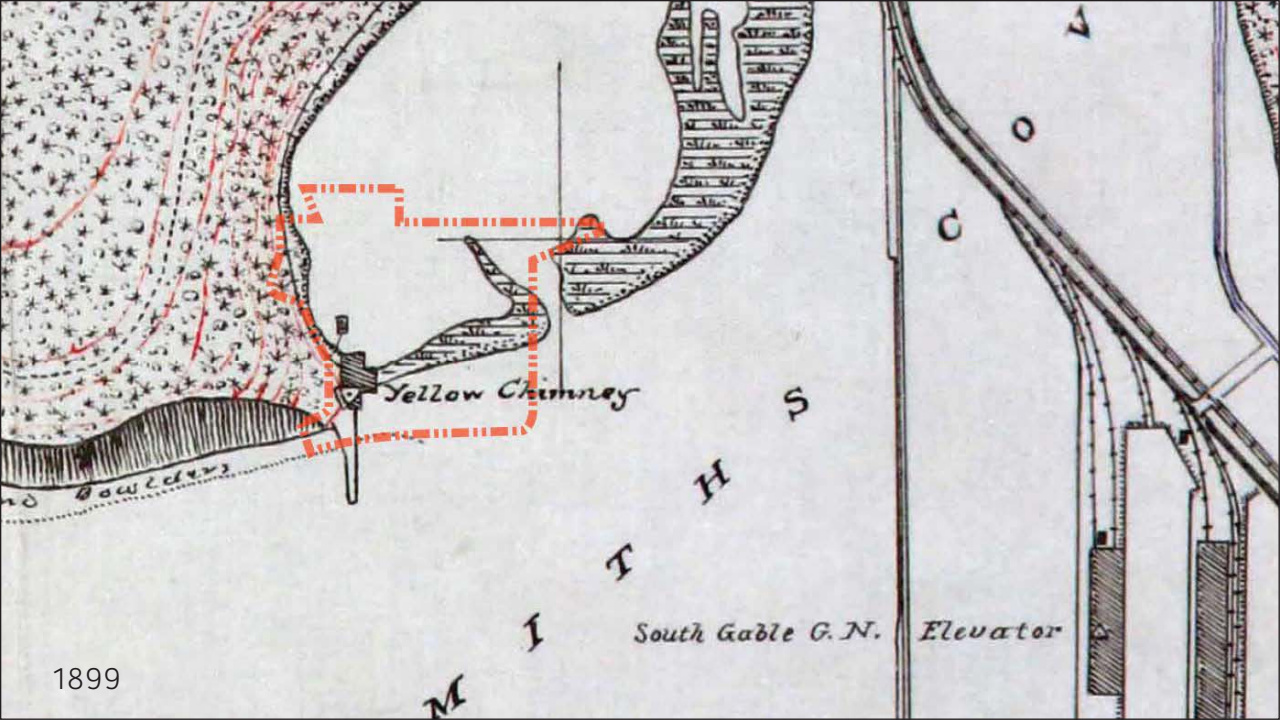
THE GLASS FACTORY RUINS SEATTLE

MAGNOLIA BLUFF ABOVE



The beach

1922



1899

Yellow Chimney

Boulders

SOUTH GABLE G. N. Elevator

M

I

T

H

S

C

O

A

1900-1940

From an Edge to a Center
International Trade established



1905





1911-1940
Shoreline Community:
Floating Houses, Boardwalks, Saunas
Finntown

ELMAH. & FLO ON THE LOG - DAD POINTING



Our house on the beach

1914

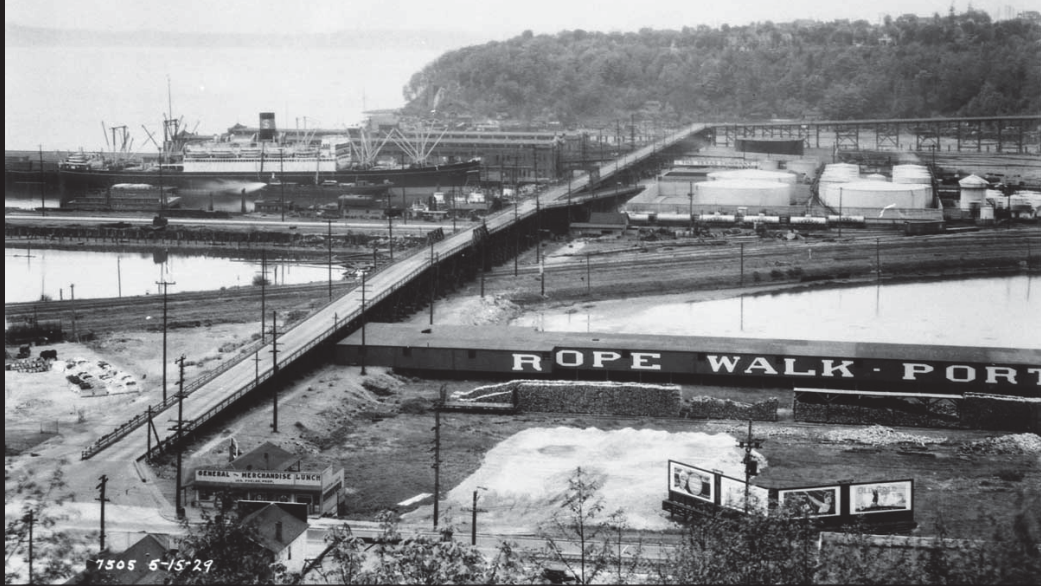




c. 1930

1912-1934
Connections and
Neighborhood Activism

1929



7505 6-15-29

1930



6942
12-22-30

1934



1940s

Center for Embarkment and
Major Land-shaping



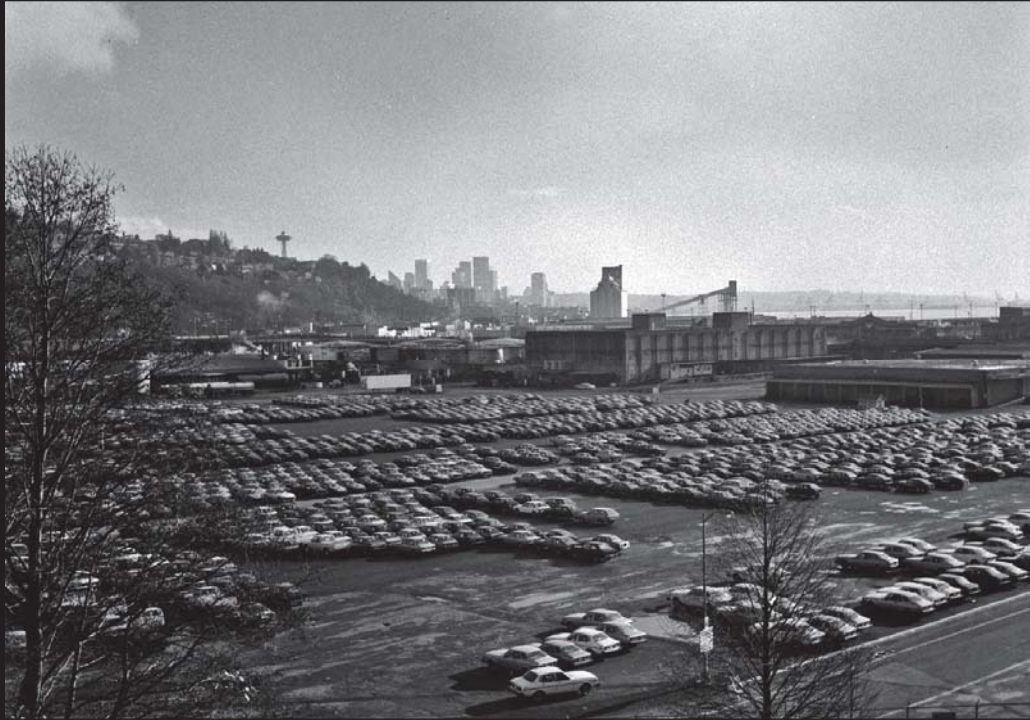
Property of Museum of History & Industry, Seattle



1947

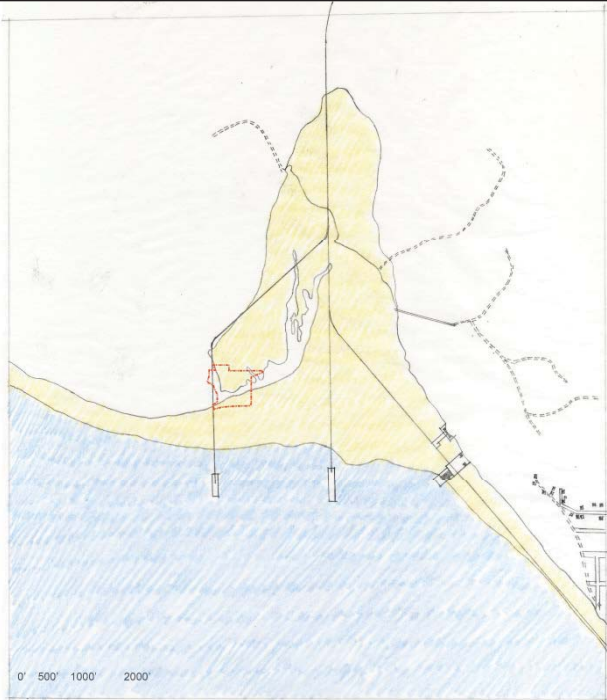
1970-Current
International Trade and
Center for Recreation

1979





1889



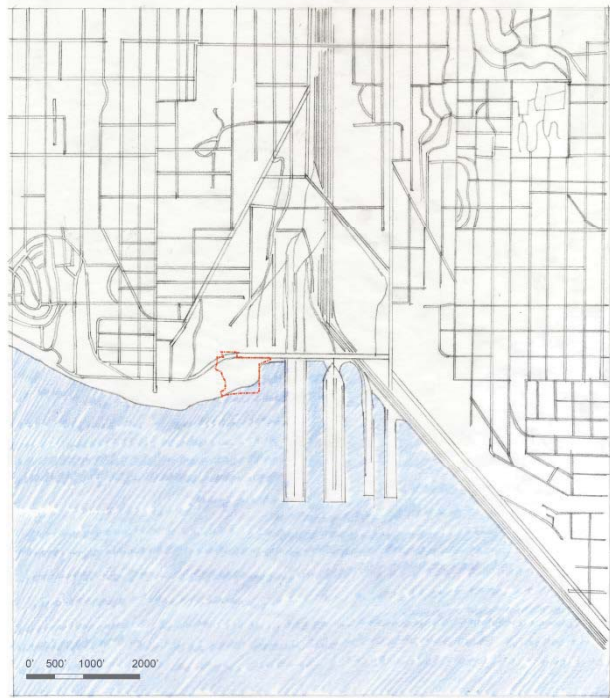
1917



1936



1950

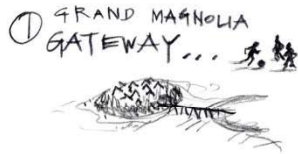




2016

SMITH COVE PARK:

GRAND GATEWAY



IMMERSION IN NATURE




ACTIVE CONNECTIONS



SMITH COVE PARK:

GRAND GATEWAY

① GRAND MAGNOLIA GATEWAY... 



IMMERSION IN NATURE

② INFORMAL INTIMATE IMMERSION...



ACTIVE CONNECTIONS

③ CITY + COMMUNITY CONNECTIONS...

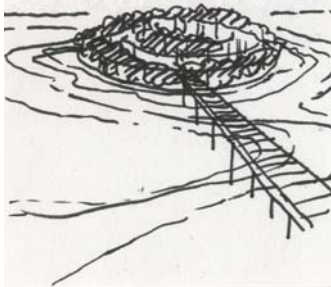


PHYSICAL HERITAGE
+ IDENTITY OF
MAGNOLIA:

..... an island

..... arrival by bridge...

..... ringed by treed bluffs...







8877



SMITH COVE PARK:

GRAND GATEWAY

① GRAND MAGNOLIA
GATEWAY ... 



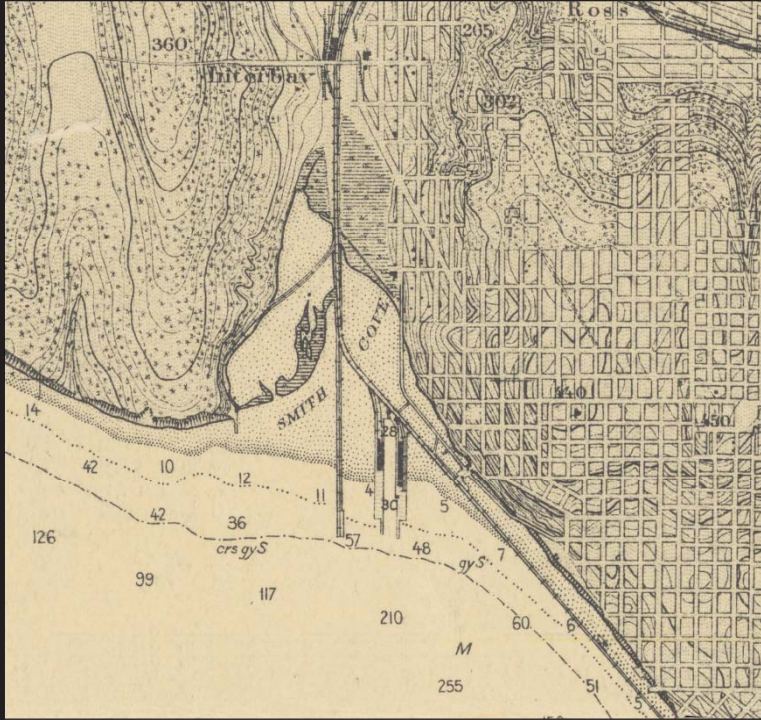
IMMERSION IN NATURE

② INFORMAL INTIMATE
IMMERSION ... 

③ CITY + COMMUNITY
CONNECTIONS ...



ACTIVE CONNECTIONS















SMITH COVE PARK:

GRAND GATEWAY

① GRAND MAHOLIA
GATEWAY ...



IMMERSION IN NATURE

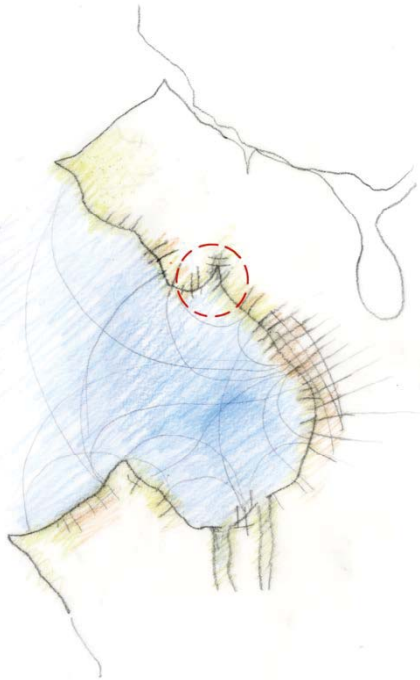
② INFORMAL INTIMATE
IMMERSION ...



ACTIVE CONNECTIONS

③ CITY + COMMUNITY
CONNECTIONS ...











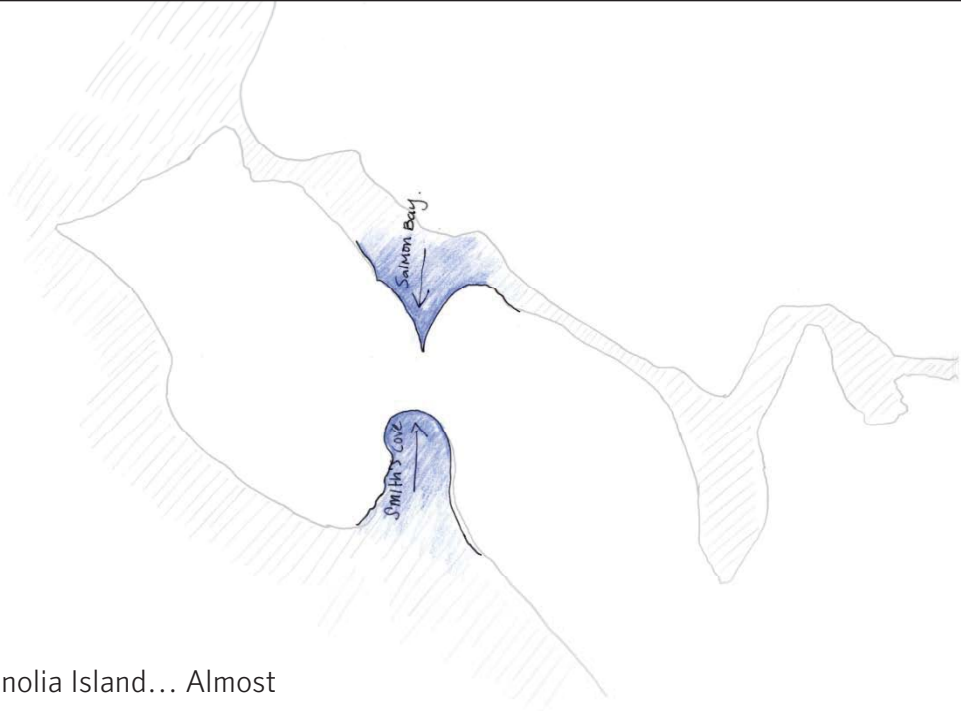




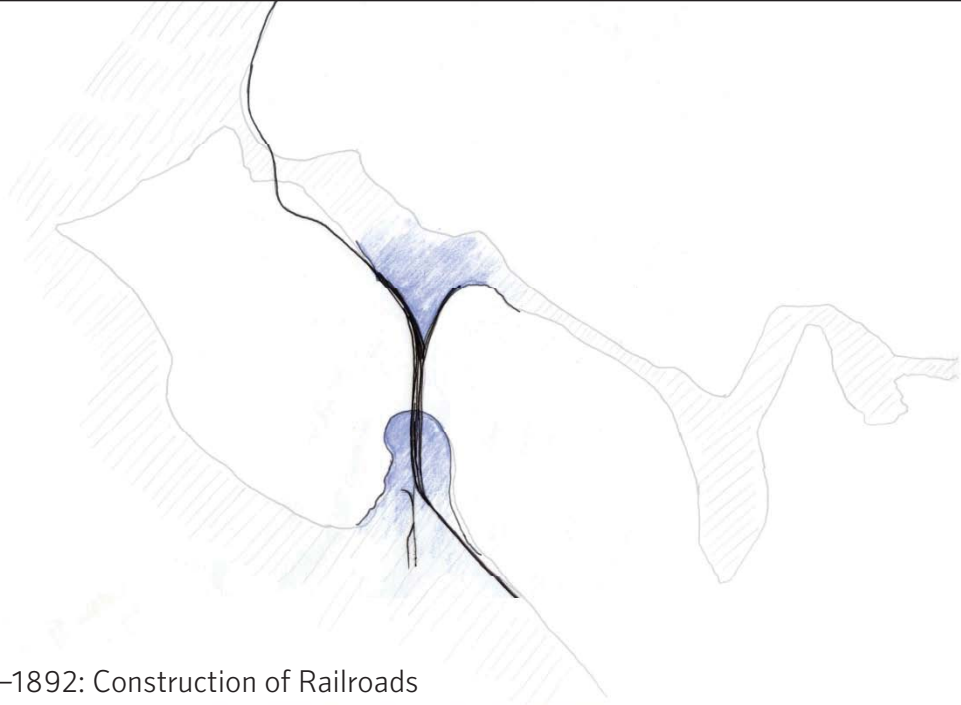




Magnolia Island... Almost



Magnolia Island... Almost



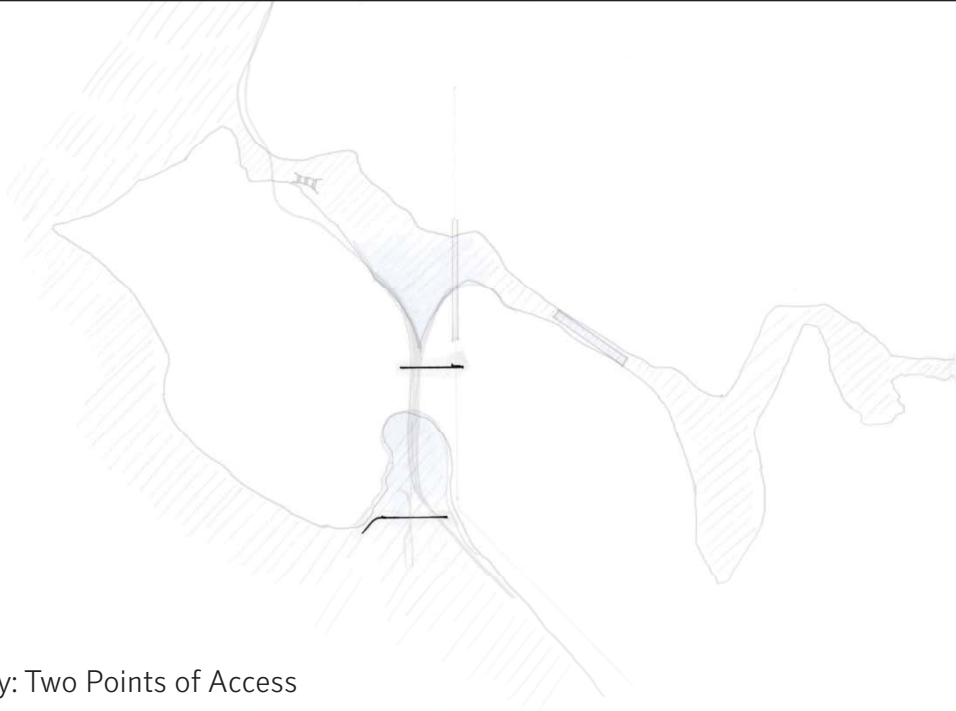
1887–1892: Construction of Railroads



1908-1912 Construction of Trestles



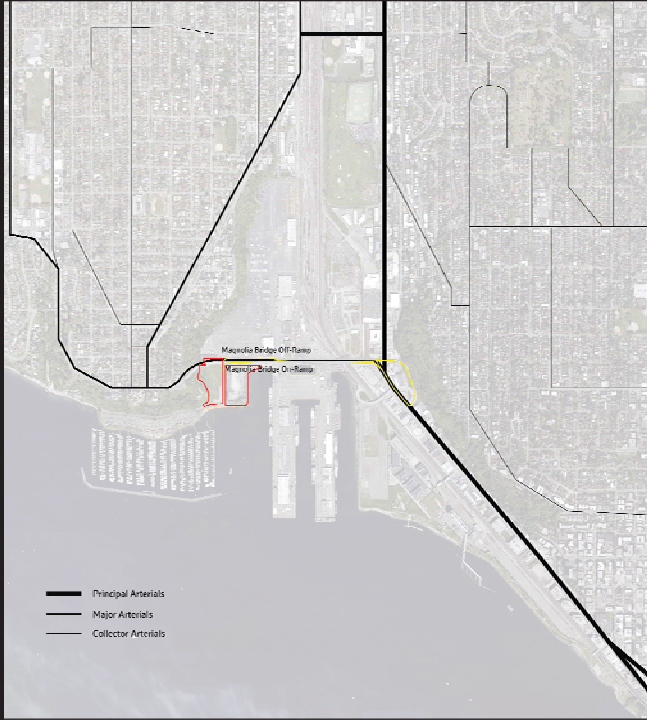
1917: Fremont Cut, Chittendon Locks, Ballard Bridge



Today: Two Points of Access



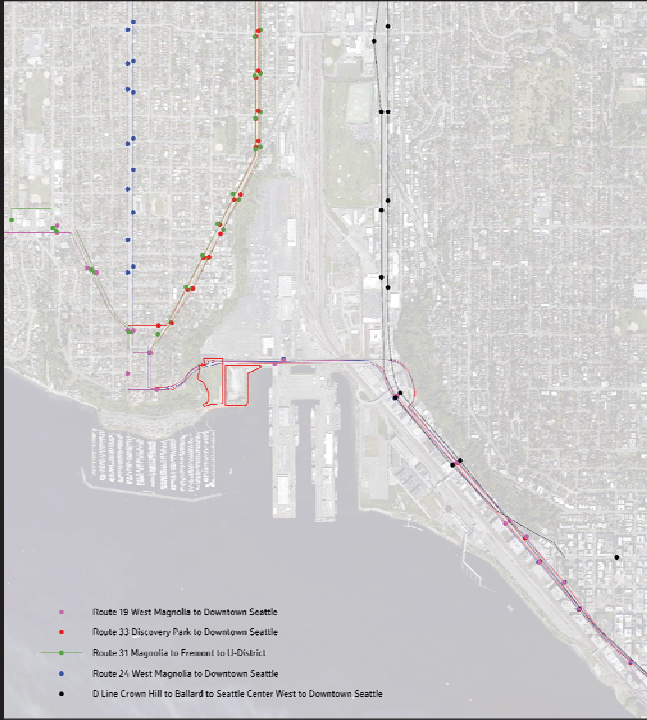
Vehicular Connections



Vehicular Connections



Future Bridge



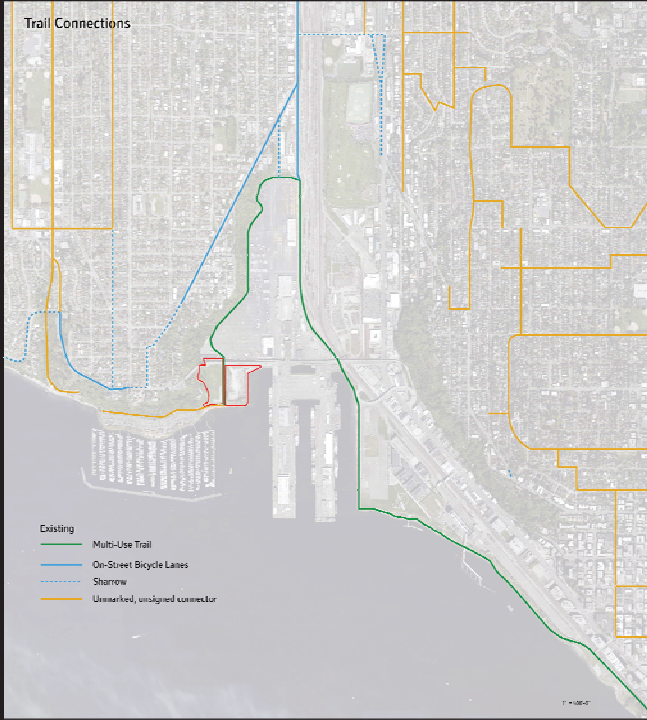
- Route 19 West Magnolia to Downtown Seattle
- Route 23 Discovery Park to Downtown Seattle
- Route 31 Magnolia to Fremont to U-District
- Route 24 West Magnolia to Downtown Seattle
- D Line Crown Hill to Ballard to Seattle Center West to Downtown Seattle

Bus Connections



Bus Stop

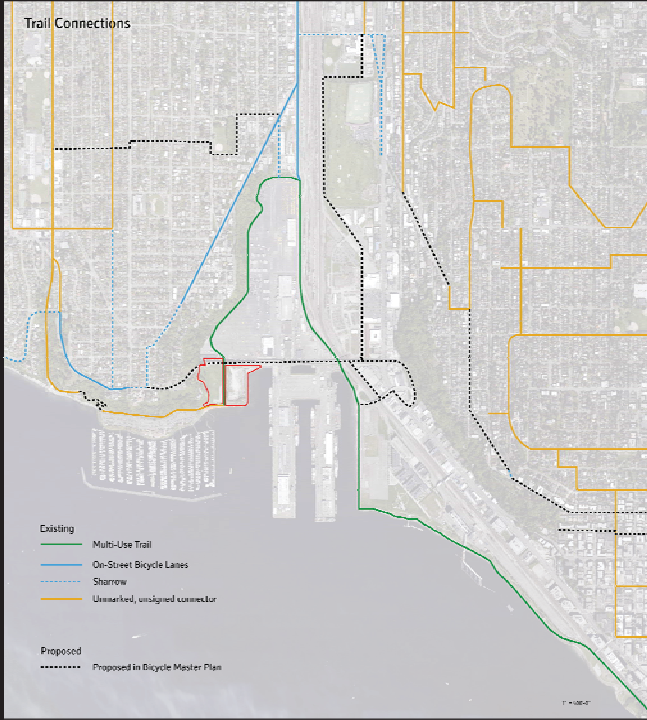
Trail Connections



Existing

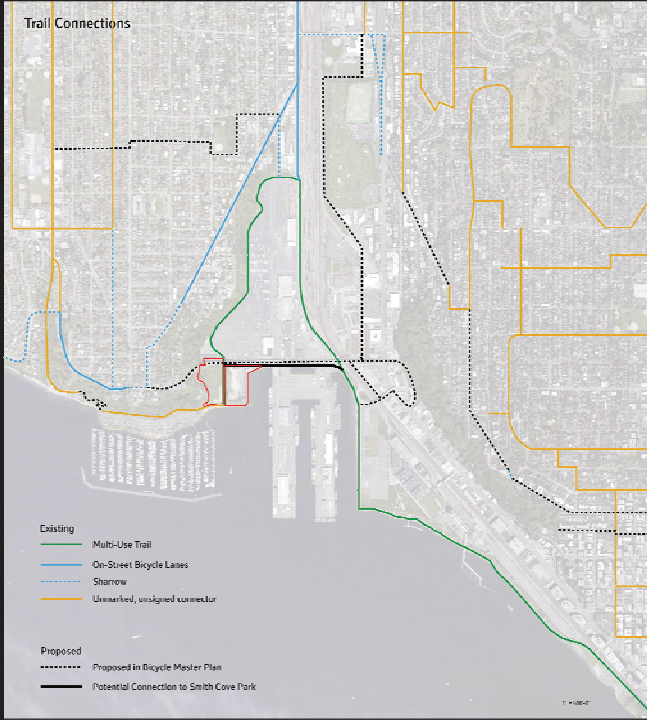
- Multi-Use Trail
- On-Street Bicycle Lanes
- - - Sharrow
- Unmarked, unsigned connector

Trail Connections



Possible Trail Connections

Trail Connections



Possible Trail Connections

Programming for Medium to Large Groups

- Athletic sport (field play)
- Medium to large events (fairs, social club events)
- Playing sand volleyball



Programming for Singular and Small Groups

- Small gatherings (picnics)
- Wildlife watching
- Running
- Trail walking
- Biking
- Children's play
- Kayaking and craft boating



Infrastructure

- Safe connections for pedestrians, bikes, vehicles
- Parking
- Restrooms



Sense of Place

- Water
- Sand
- Silk
- Floating
- Trestles
- Movement/Connectivity
- An Edge and a Center

Programming for Medium to Large Groups

- Athletic sport (field play)
- Medium to large events (fairs, social club events)
- Playing sand volleyball

Infrastructure

- Safe connections for pedestrians, bikes, and vehicles
- Parking
- Restrooms

Programming for Singular and Small Groups

- Small gatherings (picnics)
- Wildlife watching
- Running
- Trail walking
- Biking
- Children's play
- Kayaking and craft boating

