



Gametime - Dome



Berliner - Cloud 9 Swing



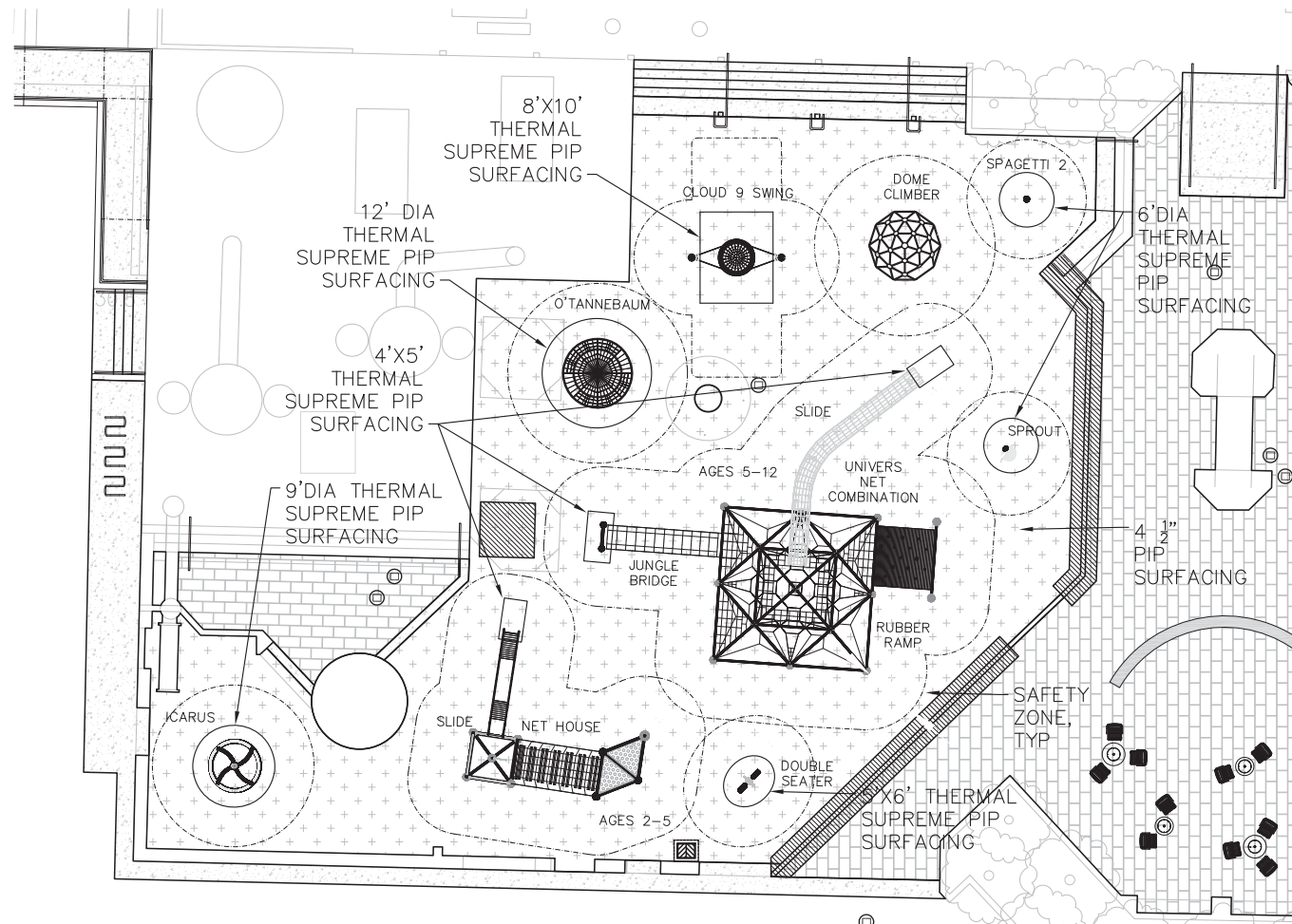
Berliner - O'tannebaum



Goric - Icarus



Berliner - Net House, Modify with Net Walls, Net Roof and SS Slide



PLAY EQUIPMENT PLAN



Goric - Sprout



Goric - Double Seater



Play



**Goric - Spaghetti
8'-9"**



Berliner Univers 18.5' Net with SS Slide, Rubber Ramp, Jungle Bridge



**PLAY AREA - OVER 5000 SF
LIST OF ACCESSIBLE PLAY EVENTS:**

5-12 year old Play Events
 INCLUDES: ICARUS, O'TANNEBAUM, CLOUD 9 SWING, DOME CLIMBER, SPAGETTI, SPROUT, UNIVERS NET CLIMBER
 NUMBER OF PLAY EVENTS: 10
 NUMBER OF ELEVATED COMPONENTS - 0
 NUMBER OF GROUND LEVEL COMPONENTS SHOWN - 10;
 TOTAL DIFFERENT TYPES OF GROUND LEVEL COMPONENTS - 8;

2-5 year old Compound Structure
 INCLUDES: NET HOUSE, DOUBLE SEATER
 TOTAL NUMBER OF PLAY EVENTS: 3
 NUMBER OF ELEVATED EVENTS: 3
 NUMBER OF ELEVATED EVENTS ACCESSIBLE BY RAMP - 0;
 NUMBER OF ELEVATED EVENTS ACCESSIBLE BY RAMP REQUIRED BY ADA - 0
 NUMBER OF ELEVATED EVENTS ACCESSIBLE BY TRANSFER-3;
 NUMBER OF TRANSFER ACCESSIBLE ELEVATED EVENTS REQUIRED BY ADA -2
 NUMBER OF GROUND LEVEL PLAY EVENTS - 1;
 NUMBER OF GROUND LEVEL PLAY EVENTS REQUIRED BY ADA - 1
 TOTAL DIFFERENT TYPES OF GROUND LEVEL EVENTS - 1;
 TOTAL DIFFERENT TYPES OF GROUND LEVEL EVENTS REQUIRED BY ADA -1

**>>>>CAUTION - CALL 811<<<<
UTILITY NOTIFICATION CENTER
BEFORE YOU DIG!
WWW.CALLBEFOREYODIG.ORG**

NOT LESS THAN 2 OR MORE THAN 10 BUSINESS DAYS PRIOR TO COMMENCING EXCAVATION OR DEMOLITION, SECURE THE SERVICES OF A COMMERCIAL UNDERGROUND UTILITIES LOCATOR SERVICE TO IDENTIFY BELOW-GROUND IMPROVEMENTS THAT MAY NOT BE INDICATED ON THE DRAWINGS. ADDITIONALLY, TO REQUEST ON-SITE UNDERGROUND UTILITY SYSTEMS LOCATES, CALL SPR INSPECTION REQUEST LINE @ (206) 684-7034. REFER TO SECTIONS 02100 & 02120 OF THE SPECIFICATIONS FOR INSTRUCTIONS ON HOW TO PROCEED.

2010 STANDARDS FOR ACCESSIBLE DESIGN - NOTES:

1. ALL PAVING SHALL HAVE MAXIMUM RUNNING SLOPES OF 4.8% AND MAXIMUM CROSS SLOPES OF 1.8%
2. ALL NEW PAVING AND NEW PAVING MEETING EXISTING PAVING SHALL HAVE A MAXIMUM VERTICAL CHANGE IN LEVEL OF 1/4"
3. WHERE NEW PAVING MEETS EXISTING NON-ADA PAVING OUTSIDE OF PARK BOUNDARIES, CONSTRUCT A 4' TRANSITION PAVING PANEL WITH EXPANSION JOINT SO THAT PAVING CAN BE ADJUSTED IN THE FUTURE
4. ENSURE A CLEAR MIN. 5' TURNING DIAMETER WHERE NEEDED
5. ENSURE A MIN. 44" CLEAR PATH OF TRAVEL TO ALL PARK FEATURES AND A 60" CLEAR PATH OF TRAVEL WITHIN PLAY AREA

| | | |
|-----|---------------------|------|
| 3 | | |
| 2 | | |
| 1 | | |
| NO. | REVISION - AS BUILT | DATE |

REVIEWED: _____ DATE _____
 PARK ENGINEER _____
 All work done in accordance with the City of Seattle Standard Plans and Specifications in effect on the date shown above, and supplemented by Special Provisions.

SEATTLE PARKS AND RECREATION
Engineering + Design Services
 800 Maynard Avenue S., 3rd Floor
 Seattle, WA 98134 - 1336



PAMELA K. ALSPAUGH
 LICENSE NO. 441
 EXPIRES ON 08/09/2017

Seattle Parks & Recreation

GAS WORKS PARK

PLAY AREA RENOVATION

PLAY EQUIPMENT PLAN

| | |
|----------------------|--------------------|
| DESIGNED PA | DATE FEBRUARY 2017 |
| DRAWN PA | |
| CHECKED RFR | SHEET 8 OF 17 |
| ORDINANCE NO. 116274 | 08 |
| CONTRACT NO. 1956 | |
| SCALE 1"=10' | |