

**Attachment 1**  
Cheasty Greenspace **North Loop** Trail **Design**

# Cheasty Greenspace North Loop Trail

Record # 000207-22PA

Building & Land Use Pre-Application

**Owner:**

City of Seattle Department of Finance & Administrative Services,  
City Purchasing & Contracting Services

**Administering Department:**

City of Seattle Department of Parks and Recreation, Planning & Development Division  
300 Elliott Avenue West, Suite 100, Seattle, WA 98119  
Project Manager: Mike Schwindeller 206-615-1165

**Project Design Team:**

Environmental Science Associates  
2801 Alaskan Way, Suite 200, Seattle, WA 98121  
Primary Contact: Sona Greenberg 206-789-9658

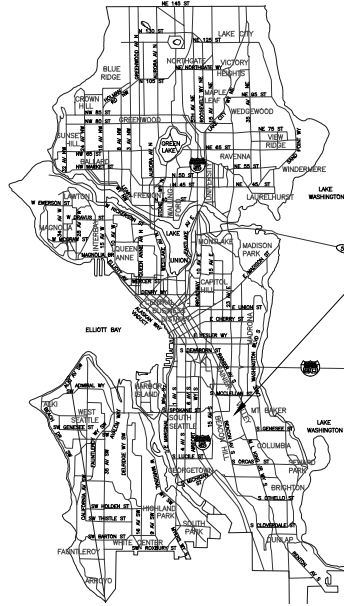
**Project Address:** 1635 S Columbian Way  
Seattle, WA 98108

**Assessor's Parcel Number:** 162404-9161

## LEGAL DESCRIPTION

POR OF W 1/2 OF SE 1/4 LY ELY OF CHEASTY BLVD NLY OF COLUMBIAN WAY & WLY OF LN BEG AT PT ON NLY MGN OF COLUMBIAN WAY 511.57 FT NELY OF S LN OF SUBD TH N 22-23-11 W 668.36 FT TH N 09-21-54 E 1745.96 FT TO N LN OF SUBD

## Project Site Location



VICINITY MAP  
CITY OF SEATTLE - NOT TO SCALE

LOCATION MAP  
BEACON HILL - SCALE 1"=1,000'

## STANDARD ABBREVIATIONS

Aban	Abandon(ed)	ED	Electric Duct	MDV	Manual Drain Valve	SED	Seattle Engineering Dept.
Adj	Adjust	EMH	Electric Manhole	Max	Maximum	SWD	Seattle Water Department
ADA	Americans with Disabilities Act	EV	Electric Vault	MJ	Mechanical Joint	SG	Subgrade
AIC	Aerial Interconnect	El	Elevation	MVL	Mercury Vapor Light	SD	Service Drain
Al	Aluminum	Elev	Elevation	Min	Minimum	SH	Sheet
AP	Angle Point	Encl	Enclosure	Misc	Miscellaneous	SS	Side Sewer - Combined
Approx	Approximate	EOC	End of Curb	ML	Monument Line	SSS	Side Sewer - Sanitary
Asph	Asphalt	Eq	Equal	NIC	Not In Contract	SI	Sleeve
ABW	Asphalt Bike Way	Ex	Existing	NTS	Not To Scale	Spes	Spaces
ATB	Asphalt Treated Base	Exp	Expansion	No.	Number	Spec	Specification(s)
ACV	Automatic Control Valve	Ft	Foot	OC	On Center	SH	Sprinkler Head
AVB	Automatic Vacuum Breaker	FLP	Field Light Pole	OD	Outside Diameter	Sq	Square
Ave	Avenue	Fig	Figure	Pav	Pavement	Std	Standard
Avg	Average	FF	Finished Floor	OD	Outside Diameter	Stl	Steel
BV	Ball Valve	FG	Finish Grade	Pav	Pavement	Stl P	Steel Pipe
BOC	Beginning of Curb	FS	Finished Surface (paving)	PPB	Pedestrian Push Button	St	Street
BO	Blow Off	FM	Force Main	PDP	Perforated Drain Pipe	SDS	Street Designation Sign
BF	Bottom Face	Gal	Gallon	PS	Pipe Sewer Combined	SLHH	Street Light Handhole
Br	Brick	GPM	Gallons Per Minute	PSS	Pipe Sewer Sanitary	SNS	Street Name Sign
Bkhd	Bulkhead	GIP	Galvanized Iron Pipe	PSD	Pipe Storm Drain	Struct	Structural/Structure
BFV	Butterfly Valve	GSP	Galvanized Steel Pipe	PSDD	Pipe Storm Drain Detention	SL	Survey Line
Cb	Cable	GM	Gas Meter	PE	Plain End	T	Tee
Cal	Caliper	G Reg	Gas Regulator	PL	Plate	Tel	Telephone
CIP	Cast Iron Pipe	Gas V	Gas Valve	PCC	Point of Compound Curvature	TCb	Telephone Cable
CB	Catch Basin	Gr	Grade	PC	Point of Curvature	TCd	Telephone Conduit
CL	Center Line	Gnd	Ground	PI	Point of Intersection	TC	Top of Curb
C-C	Center to Center	GP	Guy Pole	PRC	Point of Reverse Curve	THH	Telephone Handhole
CLF	Chain Link Fence	HH	Handhole	PT	Point of Tangency	TVCb	Television Cable
Ch	Chamber	HPG	High Pressure Gas	PVC	Polyvinyl Chloride	TVHH	Television Handhole
Cl	Class	HPS	High Pressure Sodium	LBS	Pounds	Temp	Temporary
CO	Clean Out	Horiz	Horizontal	PSI	Pounds per Square Inch	TH	Testhole
Clr	Clearance	HB	Hose Bib	PP	Power Pole	TF	Top Face
Conc	Concrete	HC	Hose Connection	PPL	Power Pole with Light	Tr	Traffic
CBW	Concrete Bike Way	Hse	House	PRV	Pressure Reducing Valve	TrCb	Traffic Cable
CC	Concrete Culvert	Hyd	Hydrant	PVB	Pressure Vacuum Breaker	TrCd	Traffic Conduit
CW	Concrete Walk	In	Inch/Inches	PL	Property Line	TCHH	Traffic Handhole
Cond	Condition	Inl	Inlet	Prop	Proposed	TrSB	Traffic Signal Box
Cd	Conduit	ID	Inside Diameter	Qty	Quantity	TrSP	Traffic Signal Pole
Conn	Connect	IE	Invert Elevation	R	Radius	XP	Transmission Pole
CMP	Corrugated Metal Pipe	Inv	Invert (Line)	RR	Railroad	Typ	Typical
Cont	Continuous	IP	Iron Pipe	Riwy	Railway	VCh	Valve Chamber
Cr	Cross	Irrg	Irrigation	Reconn	Reconnect	V/Var	Variable
Cu Ft	Cubic Feet	IRC	Irrigation Controller	Red	Reducer	Vert	Vertical
Cu Yd	Cubic Yard	Irrg	Irrigation	Ref	Refer/Reference	VB	Valve Box
Culv	Culvert	IH	Irrigation Head	Reinf	Reinforcing/Reinforcement	V/C	Vertical Curve
C&G	Curb and Gutter	Jt	Joint	RCP	Reinforced Concrete Pipe	W	Water
CR	Curb Radius	JB	Junction Box	Reloc	Relocate	WM	Water Meter
Dept	Department	KV	Kilovolt	Rem	Remove	WCR	Wheel Chair Ramp
Dia	Diameter	LIT	Large Inlet Top	R&R	Remove and Replace	w/	With
DB	Direct Burial Cable	Lt	Left	Repl	Replace	WP	Wood Pole
DGV	District Gate Valve	LP	Light Pole	Req'd	Required	WSP	Wood Stake Pipe
DCV	Double Check Valve	LF	Lineal Feet	Rt	Right		
Dwy	Driveway	Loc	Location/Locate	R/W	Right of Way		
DIP	Ductile Iron Pipe	MH	Manhole	RGS	Rigid Galvanized Steel		
Ea	Each	MCV	Manual Control Valve	RS	Rigid Steel		
Esmt	Easement			Rdwy	Roadway		
Ecc	Eccentric			RD	Roof Drain		
Elec	Electric/Electrical			SB	Sand Box		
Ecb	Electric Cable			SCL	Seattle City Light		
ECd	Electric Conduit						

## Project Description:

This project proposes constructing a 1.0-mile, one-loop bike trail, 0.4-mile multi-use trail, and 0.1 mile hike-only connector trail in Cheasty Greenspace in the Beacon Hill neighborhood of Seattle (see Vicinity Map and Location Map, this sheet). In 2012, a group of neighbors proposed the development of pedestrian and mountain bike trails at Cheasty Greenspace as a project through the Parks and Green Spaces Levy Opportunity Fund process. The Opportunity Fund is funded through the 2008 Parks and Green Spaces Levy approved by voters and allows the community to initiate park projects in neighborhoods. The project was contrary to Seattle Parks and Recreation (SPR)'s bicycle policy, and thus the original project was not successful in the Opportunity Fund process. However, there was significant community interest for the trails project, with the North Beacon Hill Community Council voting to support it. Additionally, the North Beacon Hill Neighborhood Plan, in the Comprehensive Plan (City of Seattle, 2016b), includes policy NBH-P34: Consider the development of pedestrian and bicycle trails through publicly owned greenbelts throughout North Beacon Hill. In 2013, the group Friends of Cheasty Greenspace at Mountain View secured funding through the Department of Neighborhoods. The group used this funding to hire a landscape architect to develop a preliminary trail design.

The trail is designed to avoid impacts to wetlands, and minimize impacts to steep slopes, wetland buffers, the watercourse, and the riparian management area (watercourse buffer). The proposed North Loop trail design provides a one-direction bicycle loop, multi-use connector trail, and hike-only trail that connects to an existing hike-only trail. Cheasty Greenspace North Loop provides two public hiking-only access points, two bicycle-only access points, and three multi-use access points. All proposed trail would be soft surface, with native mineral soils. The trails have been designed to minimize impacts to wetland and watercourse buffers. The bicycle trails are for beginner to intermediate riders and are not anticipated to be a mountain biking destination.

## SHEET INDEX

SHEET NO.	DWG NO.	TITLE
1	G-1	COVER SHEET
2	L-1	SITE PLAN
3	L-2	TRAIL DETAILS AND NOTES
4	ESC-1	STORMWATER CONTROL PLAN
5	ESC-2	STORMWATER CONTROL DETAILS
6	ESC-3	ESC COVER SHEET
7	ESC-4	STORMWATER CONTROL 1
8	ESC-5	STORMWATER CONTROL 2
9	ESC-6	STORMWATER CONTROL 3
10	ESC-7	STORMWATER CONTROL 4
11	ESC-8	STORMWATER CONTROL 5
12	ESC-9	STORMWATER CONTROL 6
13	ESC-10	STORMWATER CONTROL 7
14	ESC-11	STORMWATER CONTROL 8
15	ESC-12	STORMWATER CONTROL 9
16	ESC-13	STORMWATER CONTROL 10
17	ESC-14	STORMWATER CONTROL 11
18	ESC-15	STORMWATER CONTROL 12
19	ESC-16	STORMWATER CONTROL 13
20	ESC-17	STORMWATER CONTROL 14

**>>>>CAUTION - CALL 811<<<<**  
**UTILITY NOTIFICATION CENTER**  
**BEFORE YOU DIG!**  
**WWW.CALL811.COM**

Also, verify all underground utilities not located by the 811 service by using a commercial location service and call SPR Inspection Request Line (206) 684-7034.

NO.	REVISION - AS BUILT	DATE
7		
6		
5		
4		
3		
2		
1		

ADDRESS OF PROPERTY: 1635 S COLUMBIAN WAY, SEATTLE, WA 98108	
CITY OF SEATTLE DEPARTMENT OF FINANCE & ADMINISTRATIVE SERVICES, CITY PURCHASING CONTRACTING SERVICES	
LEGAL DESCRIPTION: POR OF W 1/2 OF SE 1/4 LY ELY OF CHEASTY BLVD NLY OF COLUMBIAN WAY & WLY OF LN BEG AT PT ON NLY MGN OF COLUMBIAN WAY 511.57 FT NELY OF S LN OF SUBD TH N 22-23-11 W 668.36 FT TH N 09-21-54 E 1745.96 FT TO N LN OF SUBD	
ASSESSOR'S PARCEL NO.: 162404-9161	
REVIEWED:	DATE:
PARK ENGINEER	

All work done in accordance with the City of Seattle Standard Plans and Specifications in effect on the date shown above, and supplemented by Special Provisions.



DESIGNED	ABG	DATE	03/10/2023
DRAWN	ABC/TF	SHEET	1 OF 20
CHECKED	SAR		
ORDINANCE NO.			G-1
SPECIFICATION NO.			
SCALE	AS SHOWN		

SEATTLE PARKS DEPARTMENT  
CHEASTY NORTH LOOP  
COVER SHEET

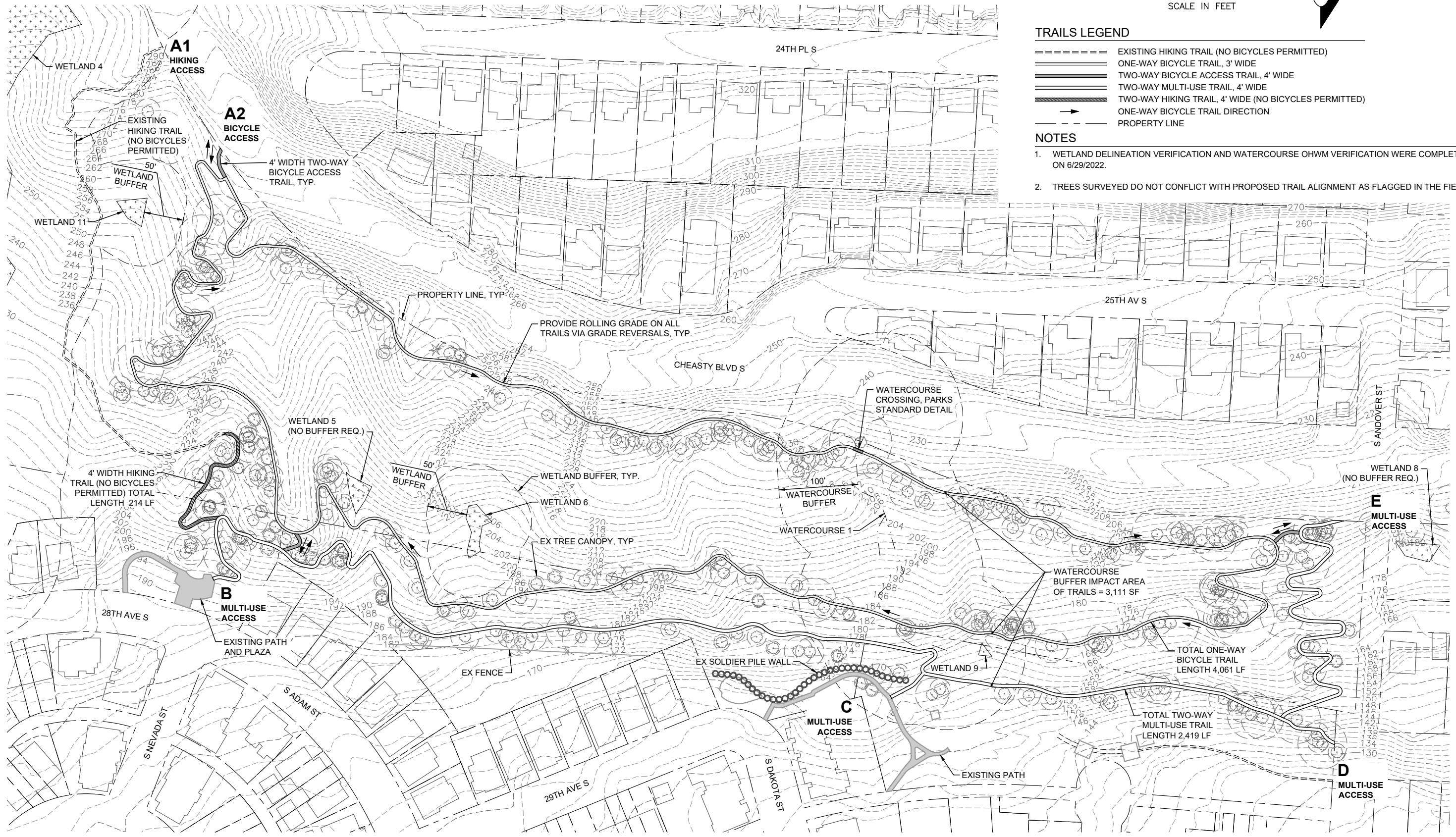


**TRAILS LEGEND**

- ===== EXISTING HIKING TRAIL (NO BICYCLES PERMITTED)
- ===== ONE-WAY BICYCLE TRAIL, 3' WIDE
- ===== TWO-WAY BICYCLE ACCESS TRAIL, 4' WIDE
- ===== TWO-WAY MULTI-USE TRAIL, 4' WIDE
- ===== TWO-WAY HIKING TRAIL, 4' WIDE (NO BICYCLES PERMITTED)
- ONE-WAY BICYCLE TRAIL DIRECTION
- - - - - PROPERTY LINE

**NOTES**

1. WETLAND DELINEATION VERIFICATION AND WATERCOURSE OHWM VERIFICATION WERE COMPLETED ON 6/29/2022.
2. TREES SURVEYED DO NOT CONFLICT WITH PROPOSED TRAIL ALIGNMENT AS FLAGGED IN THE FIELD.



mimandis.nelson - 5/10/2023 2:26:01 PM - P:\01 CAD\2022\2022060373.00 - Cheasty Trail North Loop\DWG\CL-1 SITE PLAN.dwg

**>>>>CAUTION - CALL 811<<<<**  
**UTILITY NOTIFICATION CENTER**  
**BEFORE YOU DIG!**  
**WWW.CALL811.COM**

Also, verify all underground utilities not located by the 811 service by using a commercial location service and call SPR Inspection Request Line (206) 684-7034.

NO.	REVISION - AS BUILT	DATE
7		
6		
5		
4		
3		
2		
1		

ADDRESS OF PROPERTY: 1630 S COLUMBIAN WAY, SEATTLE, WA 98108  
 CITY OF SEATTLE DEPARTMENT OF FINANCE & ADMINISTRATIVE SERVICES, CITY OWNERS  
 PURCHASING CONTRACTING SERVICES  
 LEGAL DESCRIPTION: POR OF W 1/2 OF SE 1/4 LY ELY OF CHEASTY BLVD NLY OF COLUMBIAN WAY & NLY OF LA SUE AT FT ON NLY W/4 OF COLUMBIAN WAY 511.57 FT NELY OF S LN OF SUBD TH N 22-23-11 W 688.38 FT TH N 08-21-54 E 1746.98 FT TO N LN OF SUBD  
 ASSESSOR'S PARCEL NO: 162404-9161  
 REVIEWED: \_\_\_\_\_ DATE \_\_\_\_\_  
 PARK ENGINEER

All work done in accordance with the City of Seattle Standard Plans and Specifications in effect on the date shown above, and supplemented by Special Provisions.

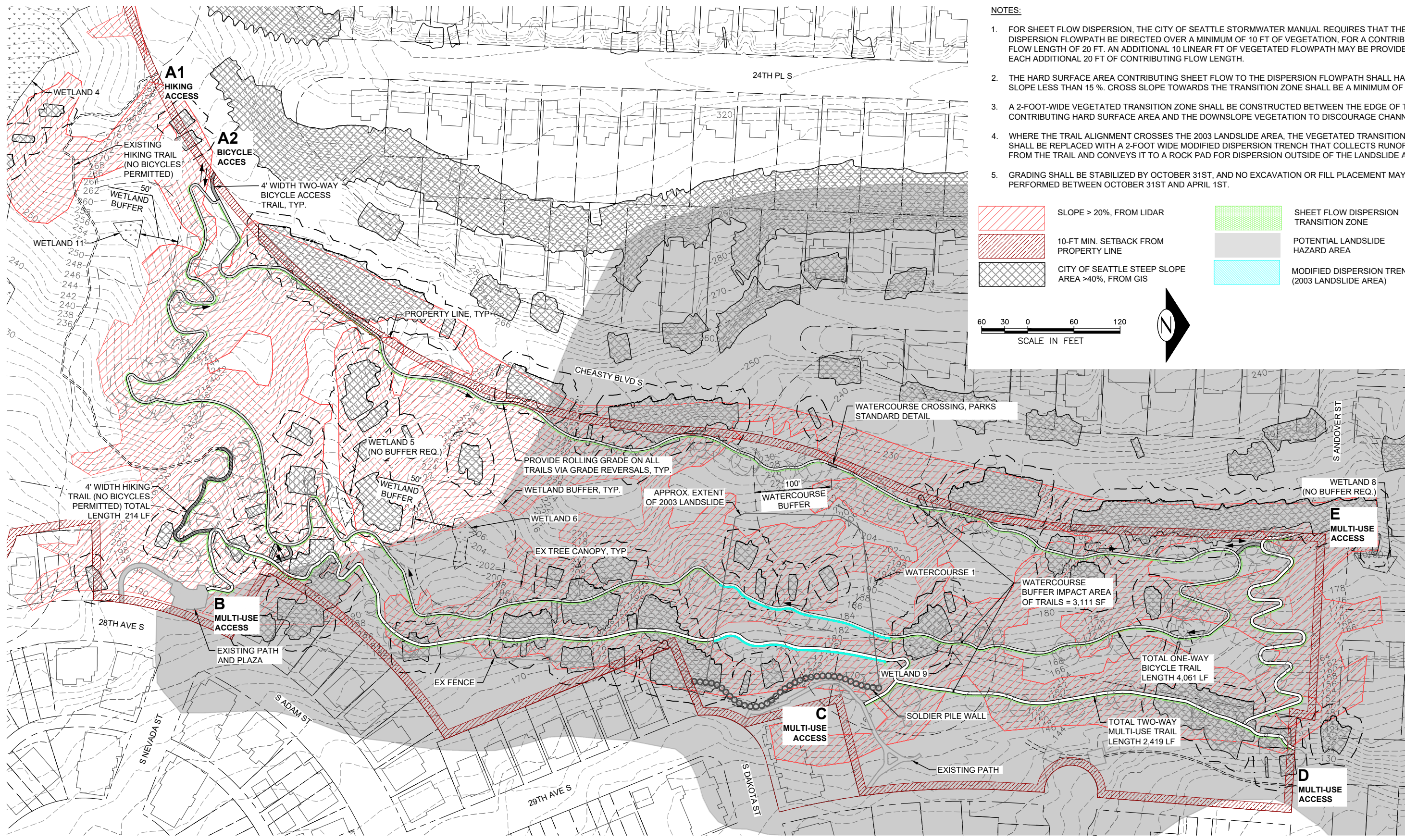
**ESA**  
 2801 Alaskan Way, #200  
 Seattle, WA 98121  
 P: (206) 789-9658  
 F: (206) 789-9684

ALLSBOONA B. GREENBERG  
 LICENSED PROFESSIONAL ARCHITECT  
 NO. 1047 EXP. 2/28/2026

**Seattle Parks & Recreation**

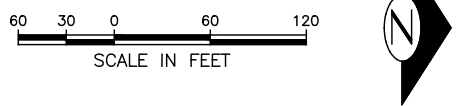
**SEATTLE PARKS DEPARTMENT**  
**CHEASTY NORTH LOOP**  
**SITE PLAN**

DESIGNED	ABG	DATE	03/10/2023
DRAWN	ABG	SHEET	2 OF 20
CHECKED	SAR		
ORDINANCE NO.			L-1
SPECIFICATION NO.			
SCALE	AS SHOWN		



- NOTES:**
- FOR SHEET FLOW DISPERSION, THE CITY OF SEATTLE STORMWATER MANUAL REQUIRES THAT THE DISPERSION FLOWPATH BE DIRECTED OVER A MINIMUM OF 10 FT OF VEGETATION. FOR A CONTRIBUTING FLOW LENGTH OF 20 FT. AN ADDITIONAL 10 LINEAR FT OF VEGETATED FLOWPATH MAY BE PROVIDED FOR EACH ADDITIONAL 20 FT OF CONTRIBUTING FLOW LENGTH.
  - THE HARD SURFACE AREA CONTRIBUTING SHEET FLOW TO THE DISPERSION FLOWPATH SHALL HAVE A SLOPE LESS THAN 15 %. CROSS SLOPE TOWARDS THE TRANSITION ZONE SHALL BE A MINIMUM OF 2%.
  - A 2-FOOT-WIDE VEGETATED TRANSITION ZONE SHALL BE CONSTRUCTED BETWEEN THE EDGE OF THE CONTRIBUTING HARD SURFACE AREA AND THE DOWNSLOPE VEGETATION TO DISCOURAGE CHANNELING.
  - WHERE THE TRAIL ALIGNMENT CROSSES THE 2003 LANDSLIDE AREA, THE VEGETATED TRANSITION ZONE SHALL BE REPLACED WITH A 2-FOOT WIDE MODIFIED DISPERSION TRENCH THAT COLLECTS RUNOFF FROM THE TRAIL AND CONVEYS IT TO A ROCK PAD FOR DISPERSION OUTSIDE OF THE LANDSLIDE AREA.
  - GRADING SHALL BE STABILIZED BY OCTOBER 31ST, AND NO EXCAVATION OR FILL PLACEMENT MAY BE PERFORMED BETWEEN OCTOBER 31ST AND APRIL 1ST.

	SLOPE > 20%, FROM LIDAR		SHEET FLOW DISPERSION TRANSITION ZONE
	10-FT MIN. SETBACK FROM PROPERTY LINE		POTENTIAL LANDSLIDE HAZARD AREA
	CITY OF SEATTLE STEEP SLOPE AREA >40%, FROM GIS		MODIFIED DISPERSION TRENCH (2003 LANDSLIDE AREA)



m:\info\melson - 5/10/2023 2:26:34 PM - P:\01 CAD\2022\stormwater\20220830\30 - Cheasty Trail North Loop\DWG\ESC - STORMWATER CONTROL PLAN.dwg

**>>>>CAUTION - CALL 811<<<<**  
**UTILITY NOTIFICATION CENTER**  
**BEFORE YOU DIG!**  
**WWW.CALL811.COM**

Also, verify all underground utilities not located by the 811 service by using a commercial location service and call SPR Inspection Request Line (206) 684-7034.

NO.	REVISION - AS BUILT	DATE
7		
6		
5		
4		
3		
2		
1		

ADDRESS OF PROPERTY: 1630 S COLUMBIAN WAY, SEATTLE, WA 98108  
 CITY OF SEATTLE DEPARTMENT OF FINANCE & ADMINISTRATIVE SERVICES, CITY OWNERS  
 PURCHASING CONTRACTING SERVICES

LEGAL DESCRIPTION: POR OF W 1/2 OF SE 1/4 LY ELY OF CHEASTY BLVD NLY OF COLUMBIAN WAY & NLY OF LA BEE AT FT ON NLY W/4 OF COLUMBIAN WAY 211.57 FT NLY OF S LN OF SUBD TH N 22-23-11 W 688.38 FT TH N 08-21-94 E 1745.98 FT TO N LN OF SUBD

ASSESSOR'S PARCEL NO: 162404-9191

REVIEWED: PARK ENGINEER DATE

All work done in accordance with the City of Seattle Standard Plans and Specifications in effect on the date shown above, and supplemented by Special Provisions.

**ESA**  
 2801 Alaskan Way, #200  
 Seattle, WA 98121  
 P: (206) 789-9658  
 F: (206) 789-9684

**BRIAN L. TAYLOR**  
 35703  
 REGISTERED PROFESSIONAL ENGINEER

**Seattle Parks & Recreation**

**SEATTLE PARKS DEPARTMENT**  
**CHEASTY NORTH LOOP**  
**STORMWATER CONTROL PLAN**

DESIGNED	ABG
DRAWN	MFN
CHECKED	BLT
ORDINANCE NO.	
SPECIFICATION NO.	
SCALE	AS SHOWN

DATE 03/10/2023  
 SHEET 4 OF 20  
**ESC-1**